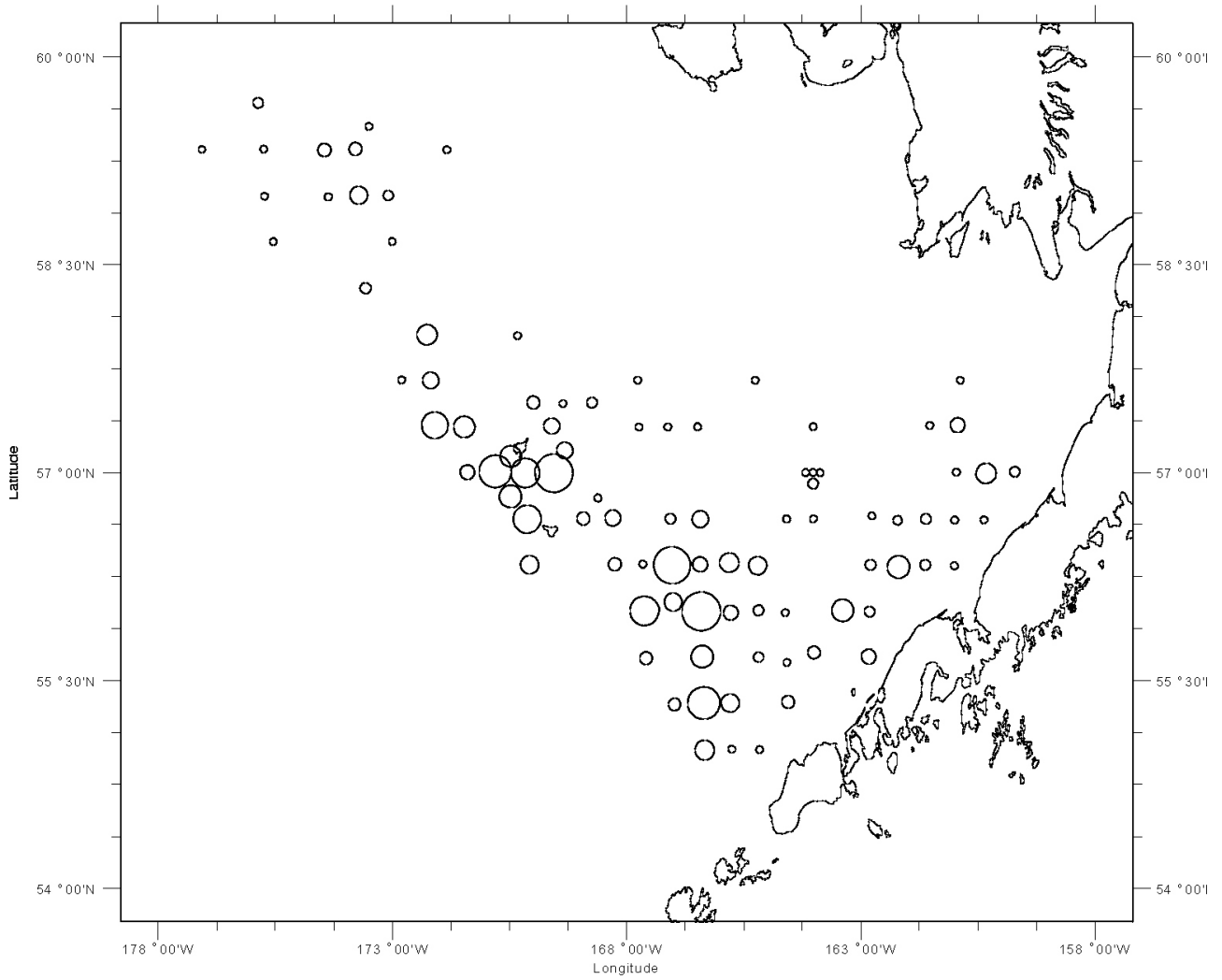
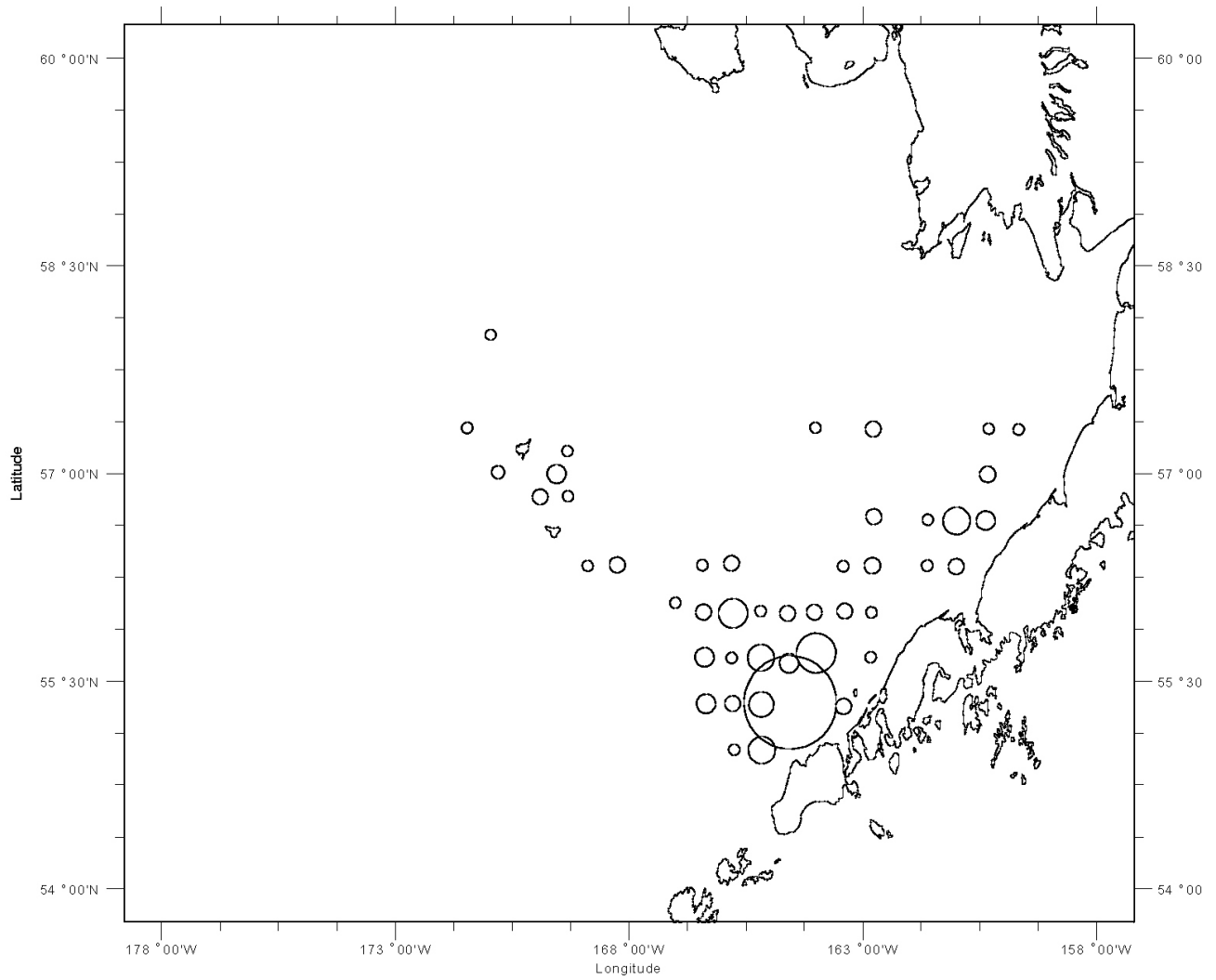


Figure B.3.2.7-1. Large Female Tanner Crab (≥ 85 mm carapace width) CPUE



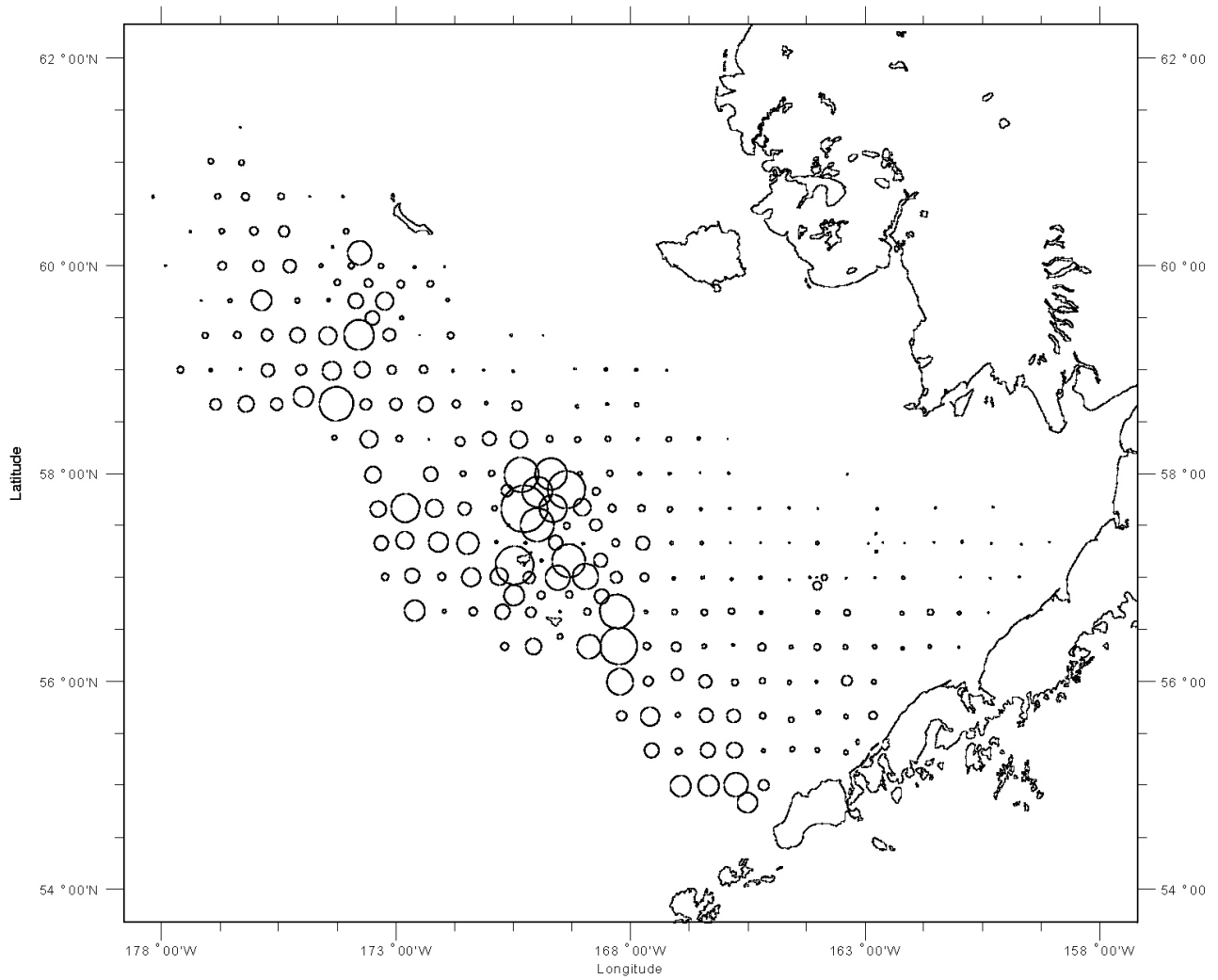
Source: NMFS 2004 Survey

Figure B.3.2.7-2. Large Male Tanner Crab (≥ 138 mm carapace width) CPUE



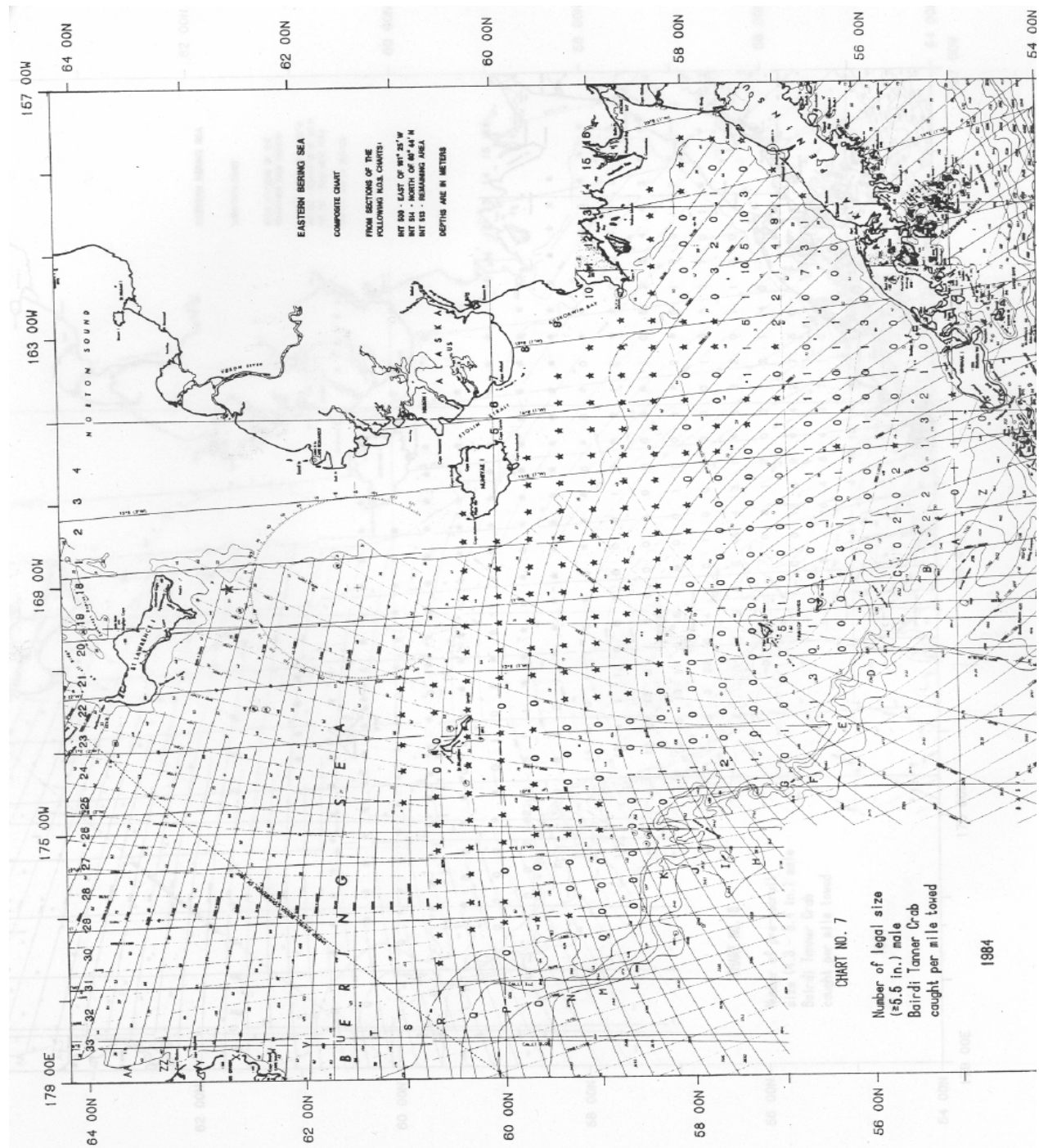
Source: NMFS 2004 Survey

Figure B.3.2.7-3. Combined Small Male (<110 mm carapace width) and Small Female (<85 mm carapace width) Tanner Crab CPUE



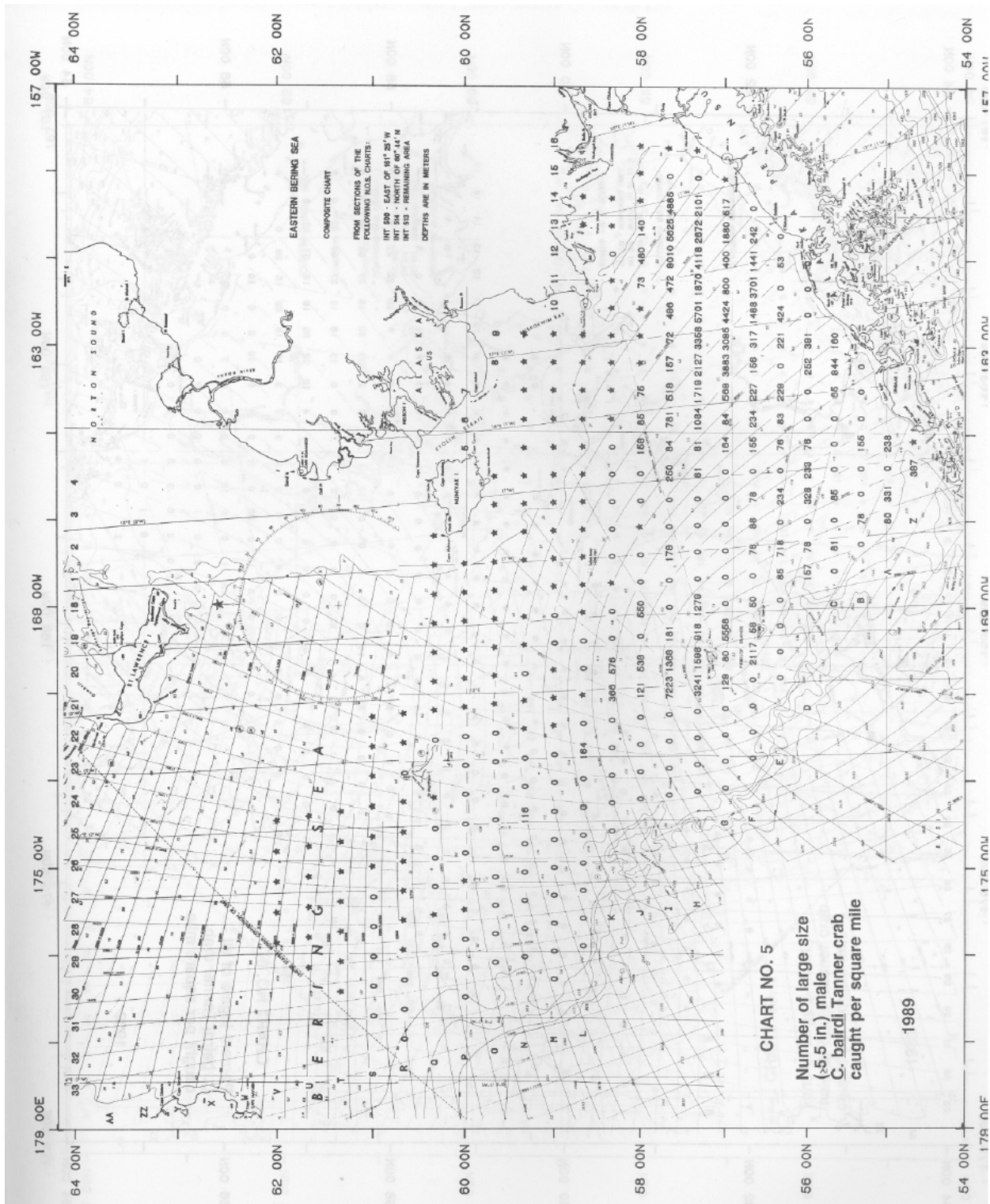
Source: NMFS 2004 Survey

Figure B.3.2.7-5. Number of Large Male Tanner Crab (>138 mm carapace width) Caught Per Mile Towed in the 1984 NMFS Trawl Survey



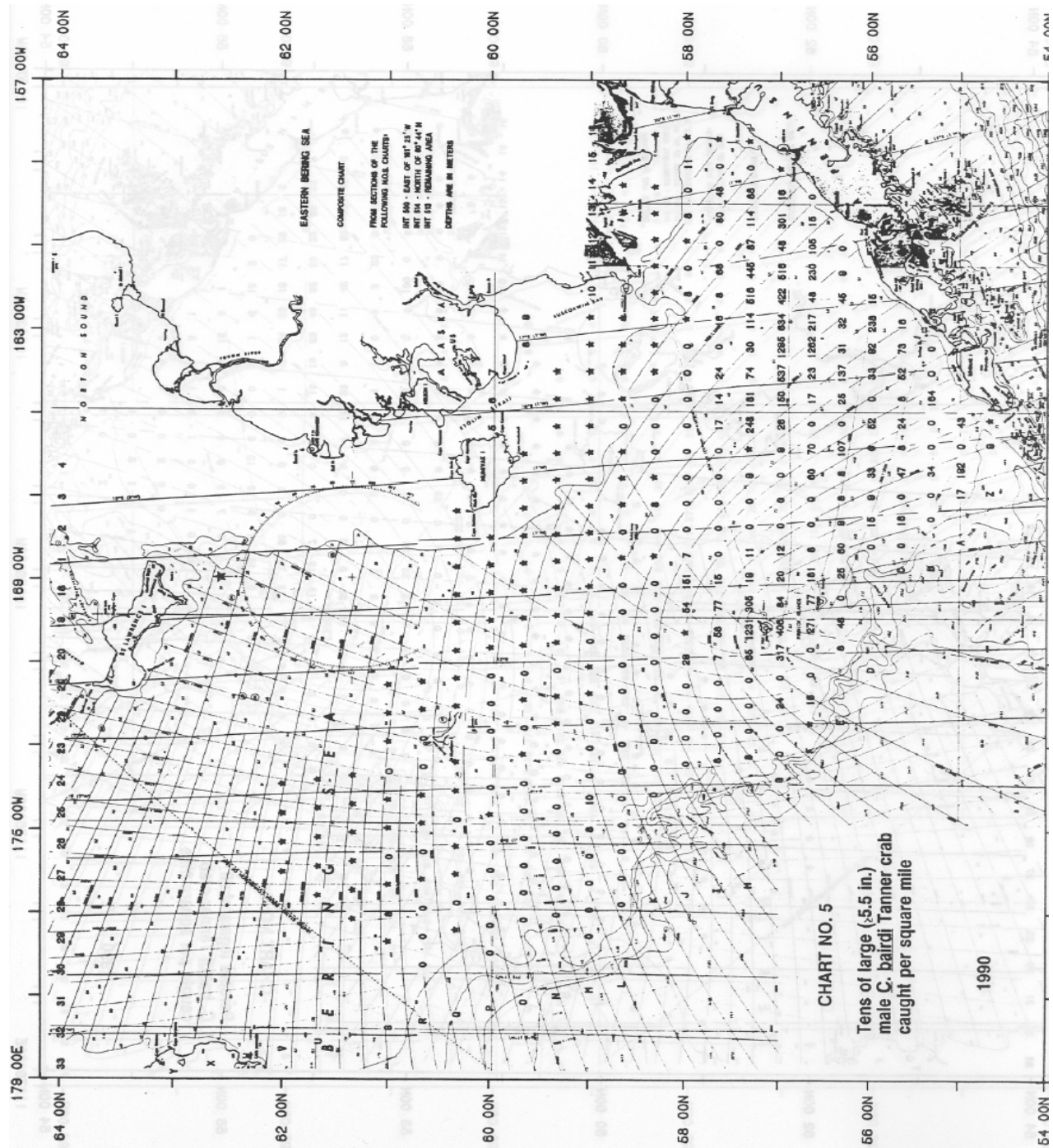
Source: NMFS Trawl Survey, 1984

Figure B.3.2.7-6. Number of Large Male Tanner Crab (>138 mm carapace width) Caught Per Square Mile in the 1989 NMFS Trawl Survey



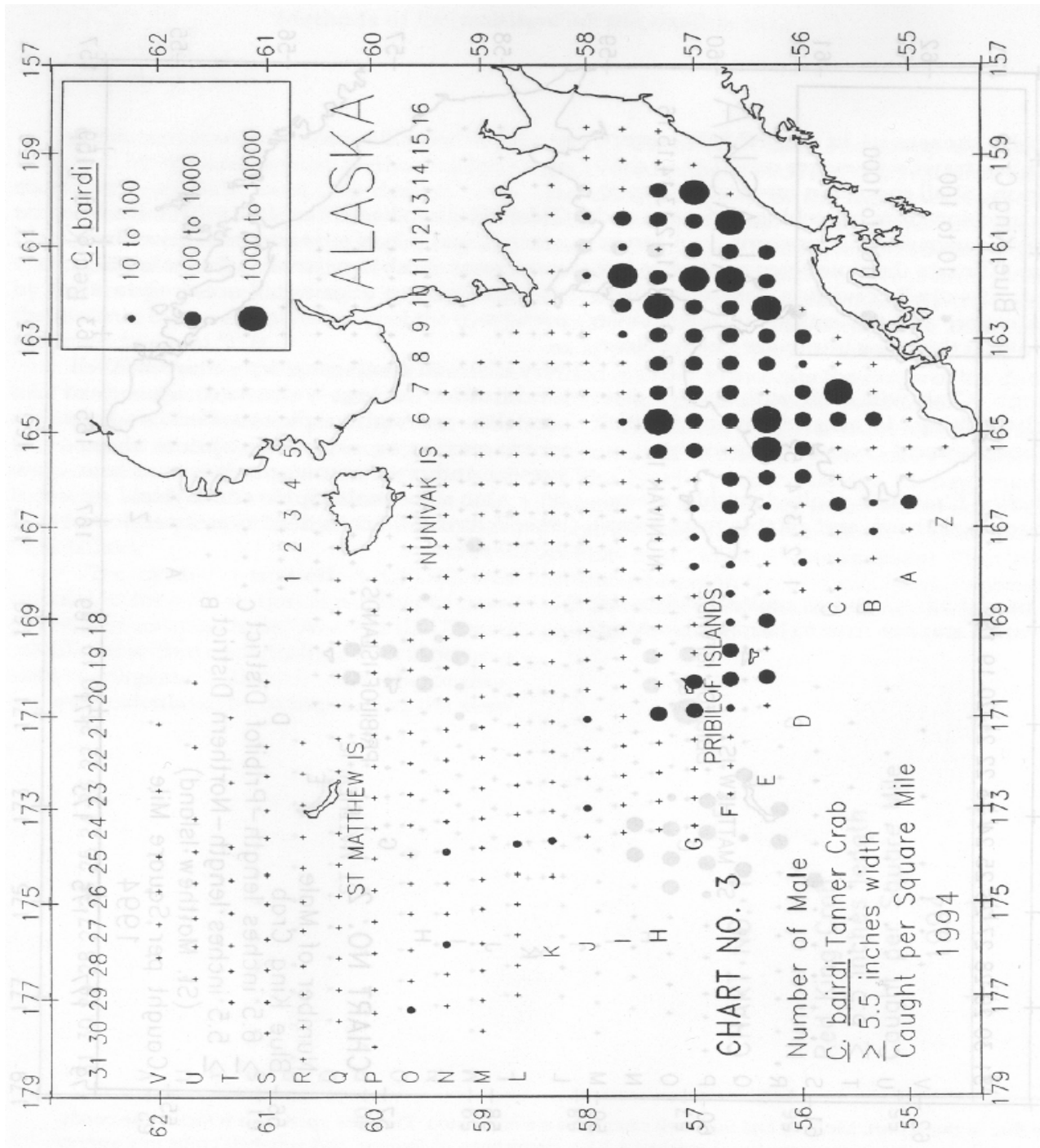
Source: NMFS Trawl Survey, 1989

Figure B.3.2.7-7. Number of Large Male Tanner Crab (>138 mm carapace width) Caught Per Square Mile in the 1990 NMFS Trawl Survey



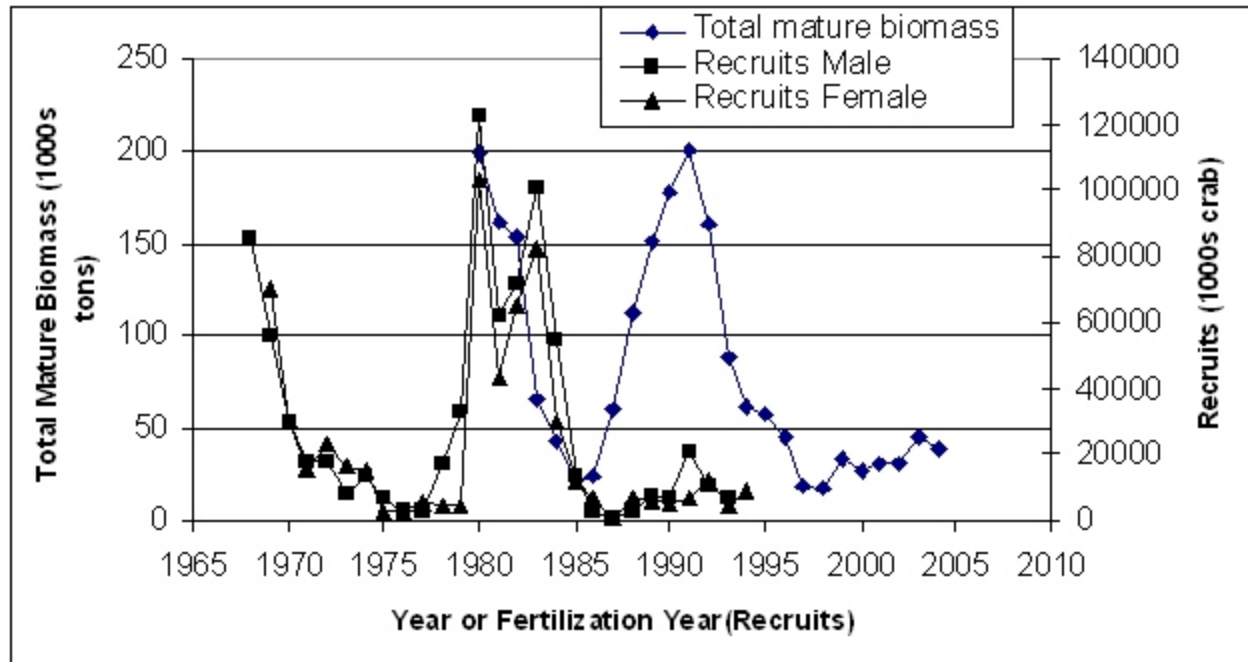
Source: NMFS Trawl Survey, 1990

Figure B.3.2.7-8. Number of Large Male Tanner Crab (>138 mm carapace width) Caught Per Square Mile in the 1994 NMFS Trawl Survey



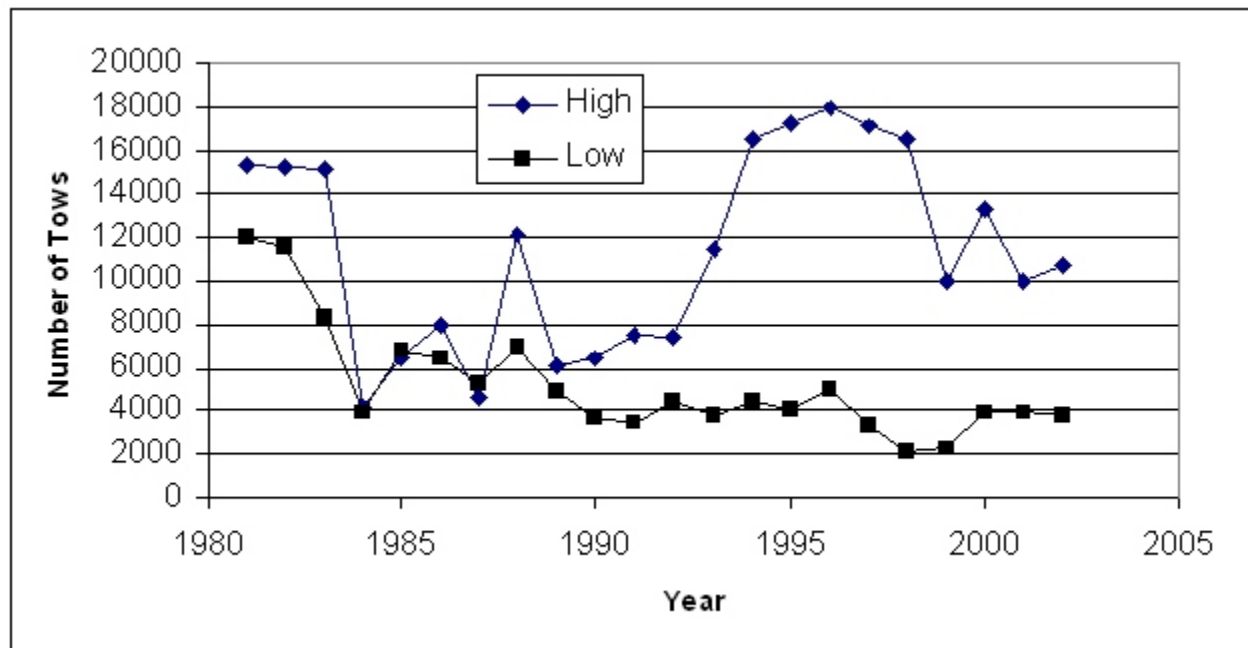
Source: NMFS Trawl Survey, 1994

Figure B.3.2.7-9. Survey Estimate of Total Mature Biomass of BS Tanner Crab (1,000 tons) from 1980 to 2004



Note: Male and female recruits were estimated from a stock assessment model by fertilization year.
Source: BSAI Crab SAFE, 2003

Figure B.3.2.7-10. Number of Tows in High and Low Effects Areas in the EBS from 1981 to 2002



Source: NMFS Data