

TERMITES: KEY TO SOME COMMON NORTH AMERICAN SPECIES
Harold George Scott



Fig. A - Winged Adult



Fig. B - Soldier



Fig. C - Worker

Key to Winged Adults

1. Radius without branches; fontanel (fig. E) usually present 2
Radius (fig. D)-with branches; fontanel absent 4
2. Tibia (fig. F) slightly to plainly blackish 3
Tibia entirely pale; Ontario to Guatemala, west to Utah and Arizona
(*Reticulitermes flavipes*) EASTERN SUBTERRANEAN TERMITE
3. Tibia slightly darkened; length 9 mm.; British Columbia to Baja California,
east to Idaho and Sonora
(*Reticulitermes hesperus*) WESTERN SUBTERRANEAN TERMITE
Tibia generally darkened; length 9.5- 10 mm.; Oregon and Montana to western
Mexico, Missouri, and Texas
(*Reticulitermes tibialis*) ARID SUBTERRANEAN TERMITE
4. Ocelli (fig. E) present 5
Ocelli absent; western Canada to Baja California
(*Zootermopsis angusticollis*) WESTERN ROTTEN-WOOD TERMITE
5. Body yellow to light brown 6
Body blackish; California to Baja California, east to Arizona and Utah
(*Kaloterms minor*) WESTERN DRY-WOOD TERMITE
6. Transverse rows of long hairs on tergites; South Carolina to Florida,
west to eastern Texas (*Kaloterms snyderi*) EASTERN DRY-WOOD TERMITE
No transverse rows of hairs on tergites; Arizona and California
(*Procryptotermes hubbardi*) ARID DRY-WOOD TERMITE

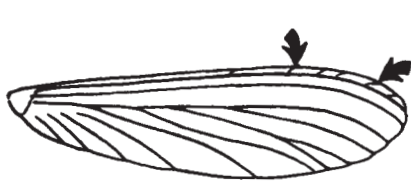


Fig. D - Wing

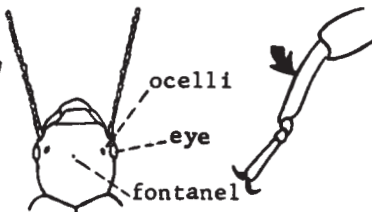


Fig. E - Head



Fig. F - Leg

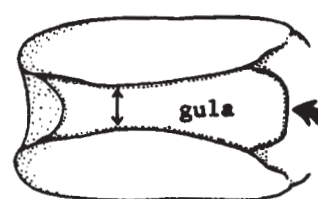


Fig. G - Throat

Key to Soldiers

1. Fontanel (fig. E) present; eyes usually absent 2
Fontanel absent; eyes (fig. E) present 4
2. Gula (fig. G) not twice as broad in front as in middle ARID SUBTERRANEAN TERMITE
Gula twice as broad in front as in middle 3
3. Head twice as long as broad WESTERN SUBTERRANEAN TERMITE
Head less than twice as long as broad EASTERN SUBTERRANEAN TERMITE
4. Antenna (fig. E) with 23-31 segments 5
Antenna with 10-20 segments WESTERN ROTTEN-WOOD TERMITE
5. Third antennal segment as long as next 3 combined EASTERN DRY-WOOD TERMITE
Third antennal segment shorter than next 3 combined WESTERN DRY-WOOD TERMITE
Third antennal segment as long as next 4 combined ARID DRY-WOOD TERMITE