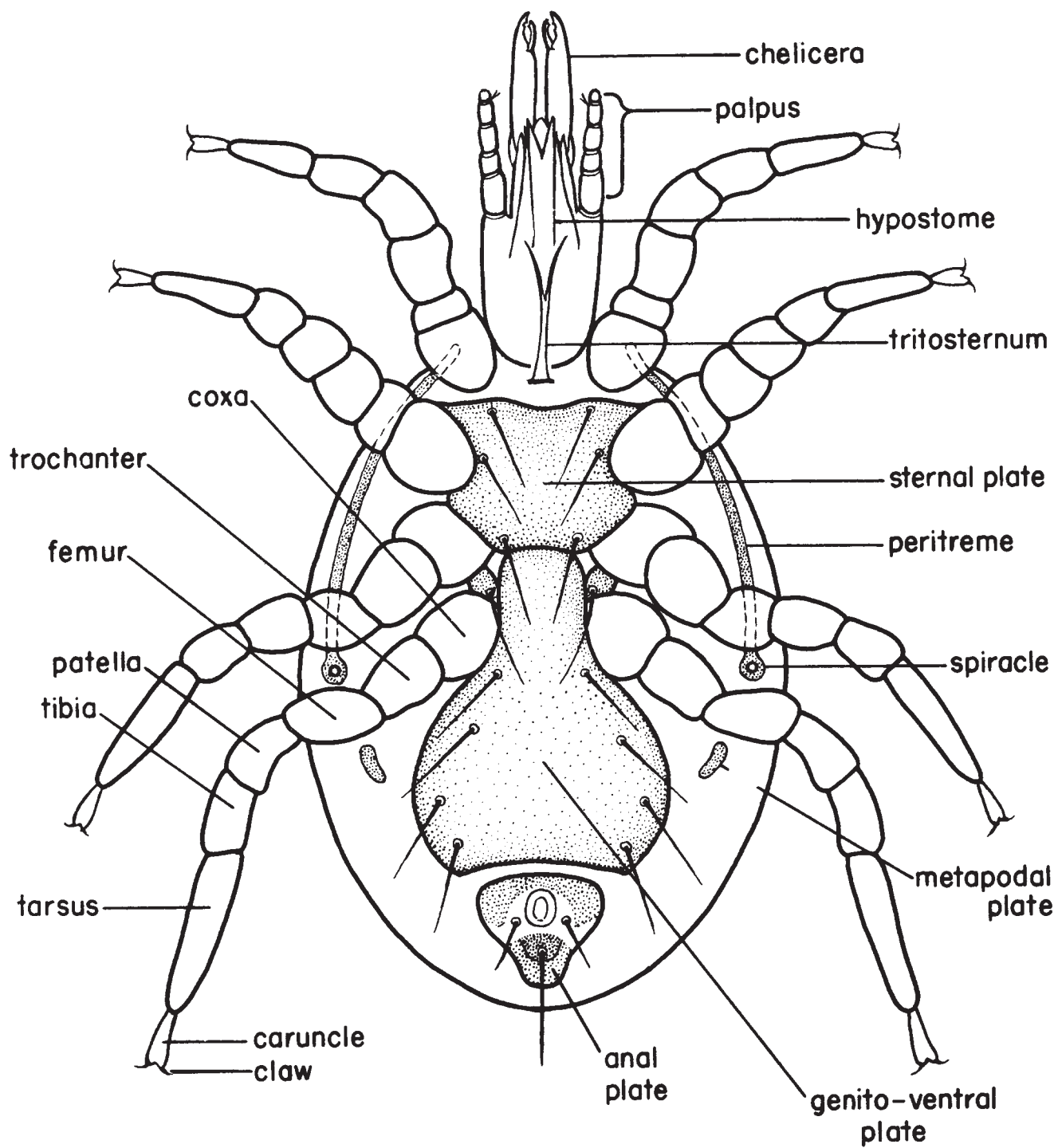


**MITE DIAGRAM WITH STRUCTURES LABELED**

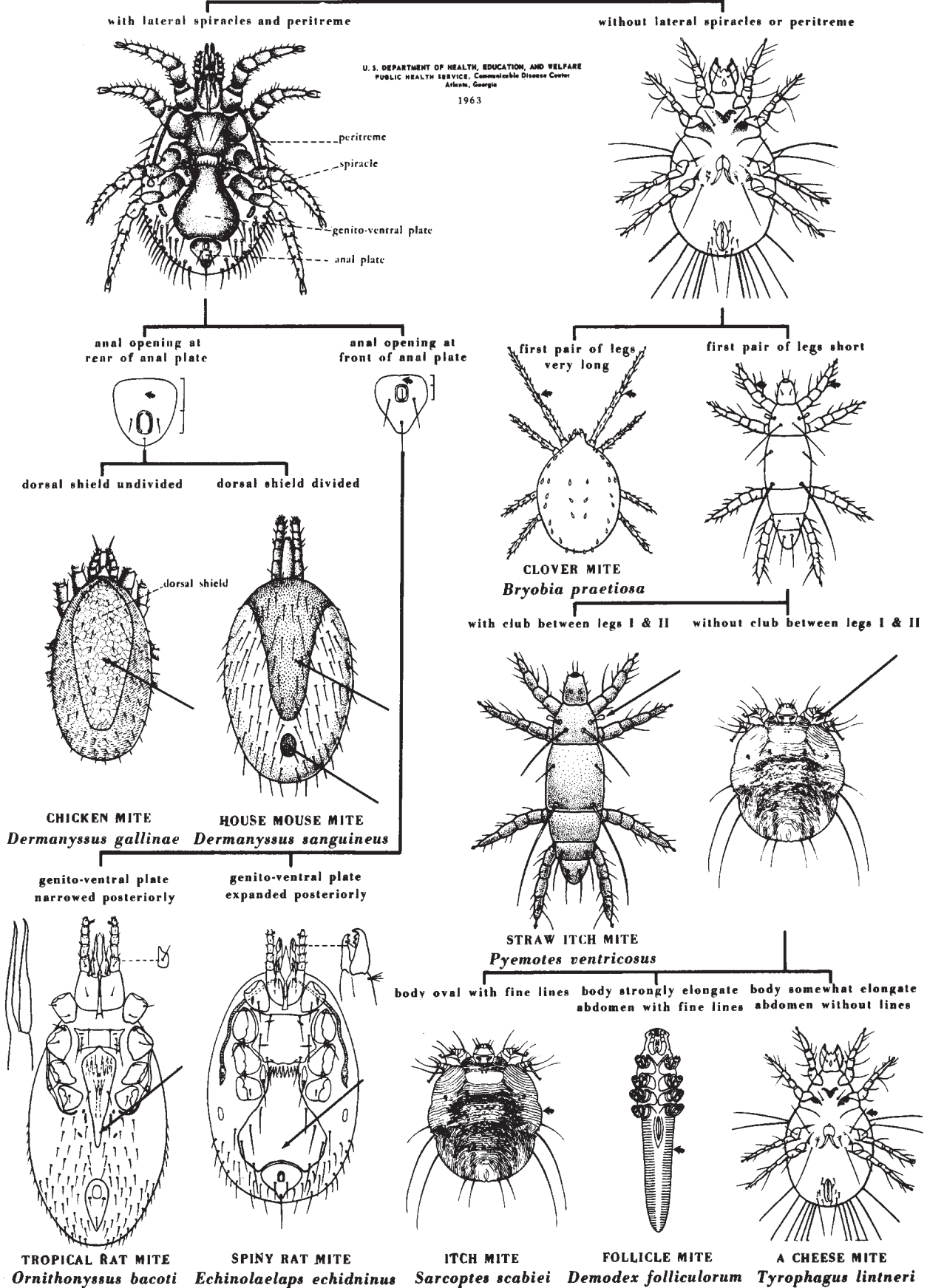
Harry D. Pratt



**MITES: PICTORIAL KEY TO SOME COMMON SPECIES OF PUBLIC HEALTH IMPORTANCE**

**Harold George Scott and Chester J. Stojanovich**

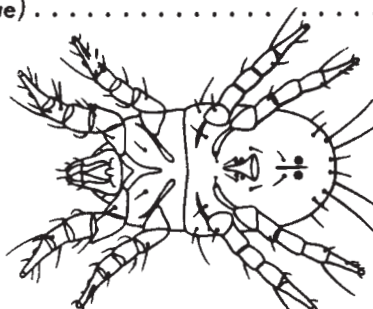
U. S. DEPARTMENT OF HEALTH, EDUCATION, AND WELFARE  
PUBLIC HEALTH SERVICE, Communicable Disease Center  
Atlanta, Georgia  
1963



**MITES: KEY TO SOME SPECIES COMMONLY INFESTING HOUSEHOLDS AND STORED FOOD**

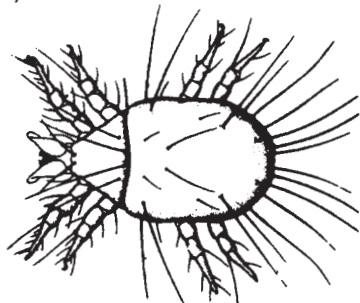
**Harold George Scott**

- 1. With club-like hair between bases of legs I and II . . . . . 5  
 Without club-like hair between bases of legs I and II . . . . . 2
- 2. Claws, if present, not on stalks (*Glycyphagus domesticus*, formerly . . . . .  
*Glycyphagus prunorum*) . . . . . SUGAR MITE  
 Claws on stalks . . . . . 3
- 3. Internal apical hair (on joint between femur I and tibia I) less  
 than three times as long as external apical hair. . . . . 4  
 Internal apical hair (on joint between femur I and tibia I) more  
 than three times as long as external apical hair (*Acarus farinae*,  
 formerly *Tyroglyphus farinae*) . . . . . HAM MITE



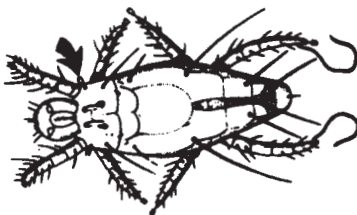
*Acarus farinae*

- 4. Tarsus with one stout dorsal and five small ventral terminal spines  
 (*Acarus siro*, formerly *Tyroglyphus siro*) . . . . . GRAIN MITE  
 Tarsus with only three small ventral spines (*Tyrophagus castellani*,  
 formerly *Tyroglyphus longior*) . . . . . CHEESE MITE



*Tyrophagus castellani*

- 5. Tarsus IV of female ending in claws and a fleshy protuberance; leg  
 IV of male smoothly curved inwards (*Pyemotes ventricosus*, formerly  
*Pediculoides ventricosus*) . . . . . STRAW ITCH MITE  
 Tarsus IV of female ending in two long hairs of unequal length; leg  
 IV of male sharply bent (*Tarsonemus floricolus*) . . . . . FLORICOLUS GRAIN MITE



*Pyemotes ventricosus*

## MITES: PICTORIAL KEY TO ADULT FEMALES COMMONLY FOUND ON DOMESTIC RATS IN SOUTHERN UNITED STATES

Harry D. Pratt and Chester J. Stojanovich

