



# The Roanoke F4 Tornado July 13, 2004



2:41 pm

Scott Smith



2:39 pm

Steve Smedley, Bloomington Pantagraph



Woodford County ESDA



2:44 pm

Brian Bill, Eureka (10/7/13-04)  
Brian Bill

Roanoke Tornado Statistics:  
Rated F4 on the Fujita Scale  
Path Length: 9.6 miles; Maximum Width: ¼ mile

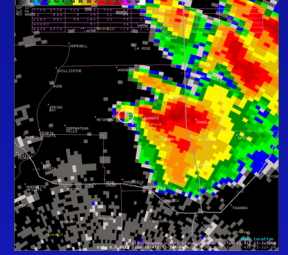
**Zero fatalities, and only 3 minor injuries!**



Wreckage from cars in the parking lot was blown into the building by the tornado.



The storm shelters were the only part of the plant to remain intact during the tornado.



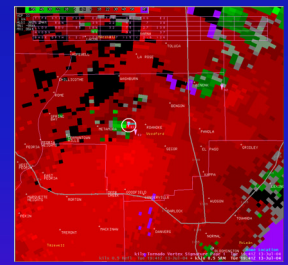
Radar images of the tornado as it struck the Roanoke plant; reflectivity (above) and storm relative motion (below).



Houses ¾ mile down the road from the Parsons plant were demolished by the tornado. Steel beams from the plant were found nearby.



Peoria Journal-Star



The Parsons Manufacturing plant west of Roanoke was destroyed by the tornado. There were 150 people in the plant at the time. However, there were NO fatalities and NO injuries at the plant!

The foresight of the plant owner to build storm shelters in the plant, and a working plan to monitor the weather and evacuate if necessary, saved lives.

Today, the plant has been rebuilt, with additional storm shelters in place.



NWS