

**DAMASCUS CORPORATION**

**26864 Watauga Road  
P.O. Box 610  
Abingdon, Virginia 24212  
276-676-2376**

**MODEL HARD**

**HYDRAULIC AUGER ROCKDUSTER**

*"We get around UNDERGROUND!!"*

**Serial Number**

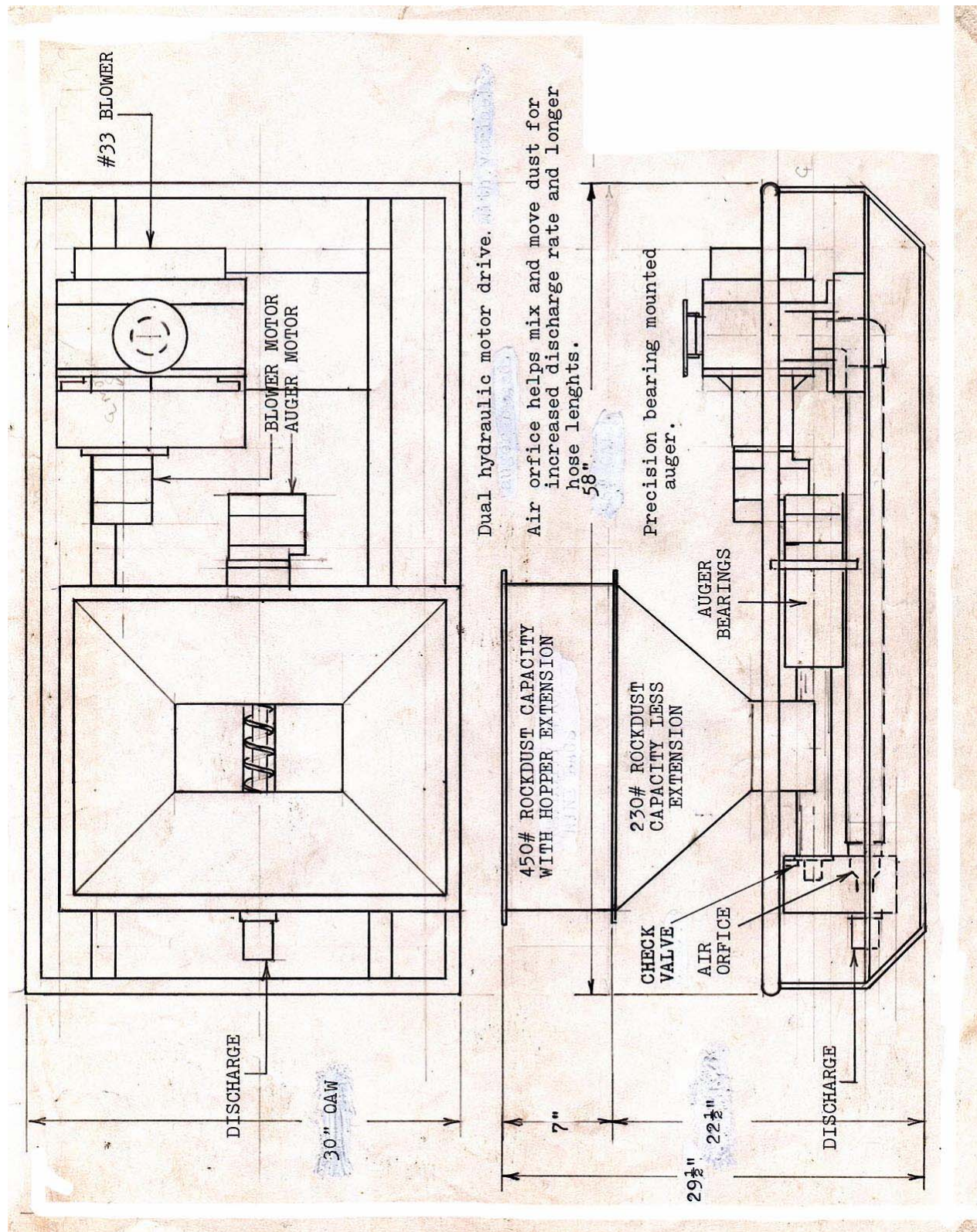
**HARD \_\_\_\_\_**

**DAMASCUS CORPORATION  
HARD – HYDRAULIC AUGER ROCKDUSTER**

TABLE OF CONTENTS

	PAGE
SPECIFICATIONS	3
OPERATING INSTRUCTIONS	5
REPLACEMENT PARTS	6
WARRANTY	8

### SPECIFICATIONS FOR: MODEL HARD - HYDRAULIC AUGER ROCKDUSTER



## DAMASCUS CORPORATION

### SPECIFICATIONS FOR: MODEL HARD - HYDRAULIC AUGER ROCKDUSTER

**DIMENSIONS & CAPACITY:** Overall width 29 ½".  
Overall length 58".  
Minimum height less hopper cover 22".  
Capacity at minimum height 230 pounds  
at 80 pounds per cubic foot.  
Hopper extension: Add 30.4 pounds per  
inch of additional hopper height.

**DISCHARGE RATE:** 2 inch hose.  
15 ft. hose 175# per minute  
50 ft. hose 100# per minute  
100 ft. hose 50# per minute

**HYDRAULIC SYSTEM:** Compatible with flow rates of from 10 to 22 gallons per  
minute at 1000 PSI. Two (2) hydraulic motors are used; one  
runs the blower, while the other runs the auger, thus  
eliminating the need for troublesome gears and expensive  
pumps.

**PNEUMATIC SYSTEM:** Model 33 Roots type blower provides air for discharge of  
dust. Air back pressure to the auger tube is controlled by a  
weighted metal check valve at the end of the auger tube. Air  
and dust are mixed efficiently by an air orifice placed in the  
mixing chamber that concentrates the air stream into the  
discharge hose, drawing in and mixing the dust.  
Furnished complete with two (2) ¾" x 8 ft. hydraulic hoses  
with quick couplers.

## **DAMASCUS CORPORATION**

### **OPERATING INFORMATION FOR DAMASCUS CORPORATION MODEL HARD HYDRAULIC AUGER ROCKDUSTER**

Check Hopper for debris that might jam the auger or clog the discharge system.

Note that one hydraulic hose is marked pressure and the other return. Connect these hoses to their respective connections on the parent units hydraulic power take-off. Be careful to wipe the couplers free from dirt that will harm the hydraulic system.

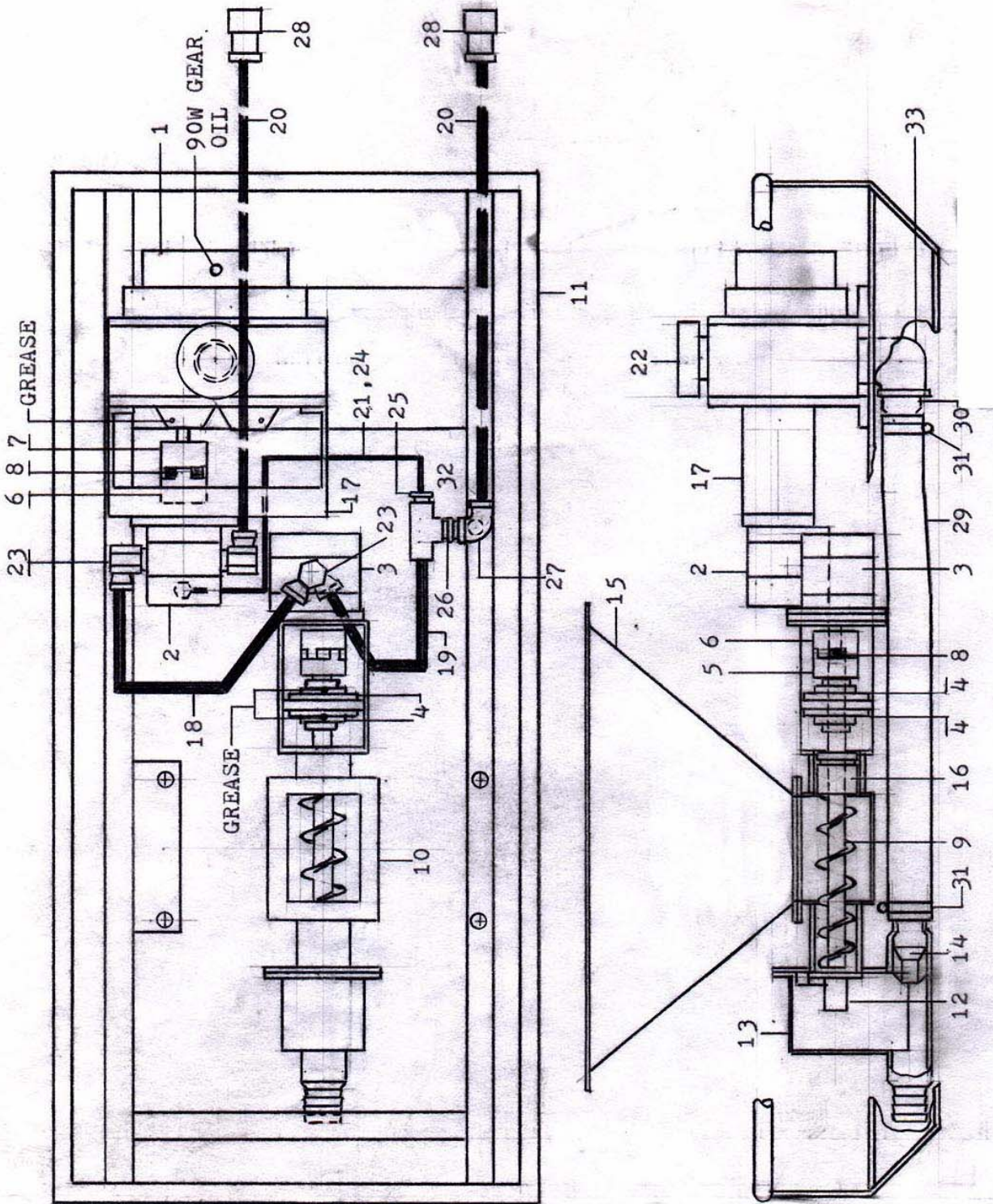
With the hopper screen in place fill hopper with dust at the point where you plan to start dusting. If dust is in hopper while transporting, it may pack and not flow freely.

Turn on hydraulic PTO on parent unit and the duster will start. NOTE: The rockdusters hydraulic system will operate in one direction only. If the duster does not run, reverse the parent units PTO lever or switch the hydraulic connections.

**CAUTION:** Keep your hands and foreign objects out of hopper. When dusting is completed, turn off hydraulic PTO. Empty duster of all dust.

**NOTE:** Some hydraulic power take-offs are for intermittent duty only. Consult manufacturer if in doubt.

# REPLACEMENT PARTS P/N: HARDP



## REPLACEMENT PARTS

### P/N: HARDP

Item	Part Number	Description	Qty
1	PO01	#33 Lower	1
2	PO02x1	Hydraulic Motor (Blower)	1
3	P002x3	Hydraulic Motor (Auger)	1
4	MO133	Bearing (Auger)	2
5	MO131	Shaft Coupler Half 1"	1
6	MO32	Shaft Coupler Half 5/8"	2
7	MO132	Shaft Coupler Half 21/32"	1
8	MO01-1	Coupler Insert	2
9	SO41	Auger	1
10	SO36	Auger Drive Frame	1
11	SO50	Frame	1
12	SO42	Flapper Assembly	1
13	SO37	Dust Mixing Chamber	1
14	MO130	Venturi	1
15	SO38	Hopper	1
16	MO129	Auger Seal	1
17	SO07	Blower to Motor Adapter	1
18	F008x6x30	Hydraulic Hose 3/4"x30"	1
19	F008x6x29	Hydraulic Hose 3/4"x28"	1
20	F008x6x96	Hydraulic Hose 3/4"x96"	2
21	F008x2x22	Hydraulic Hose 1/4"x22"	1
22	SO54	Blower Inlet Guard	1
23	6901-12-12	Fitting	4
24	1501-4-4	Fitting	2
25	5406-12-4	Bushing	1
26	5404-12-12	Fitting	1
27	V006	Return Line Check Valve	1
28	F002	Hose Coupler, Female	2
29		Rockduster Hose 2"x31" (Rubber)	1
30		Hose Adapter 2"	1
31		#32 Hose Clamp	2
32	5605-12	Fitting, Tee	1
*33		Street Elbow 2"	1
*	SO52	Hopper Screen	1
*	SO53	Hopper Extension 7"	1
*	0001	Motor Seal for Item 2 & 3	2

\*Not Shown

## **DAMASCUS CORPORATION**

### **LIMITED WARRANTY**

#### **WHAT DOES THE WARRANTY COVER?**

This warranty covers any defects in material and workmanship with the exceptions stated below.

#### **HOW LONG DOES THE COVERAGE LAST?**

This warranty lasts for ninety (90) days from the time you received your Damascus Corporation product.

#### **WHAT IS NOT COVERED BY THIS WARRANTY?**

Tires, water damage, abuse, misuse, or damage resulting from an act of God (such as a flood) are not covered. Also, incidental and consequential damages are not recoverable under this warranty.

#### **HOW CAN YOU GET SERVICE?**

Contact the Damascus Corporation distributor where you bought the product or call Damascus Corporation at 276-676-2376. Please have the model number and serial number of your product ready.

#### **HOW STATE LAW RELATES TO THIS WARRANTY.**

This warranty gives you specific legal rights. You may also have other rights which vary from state to state.