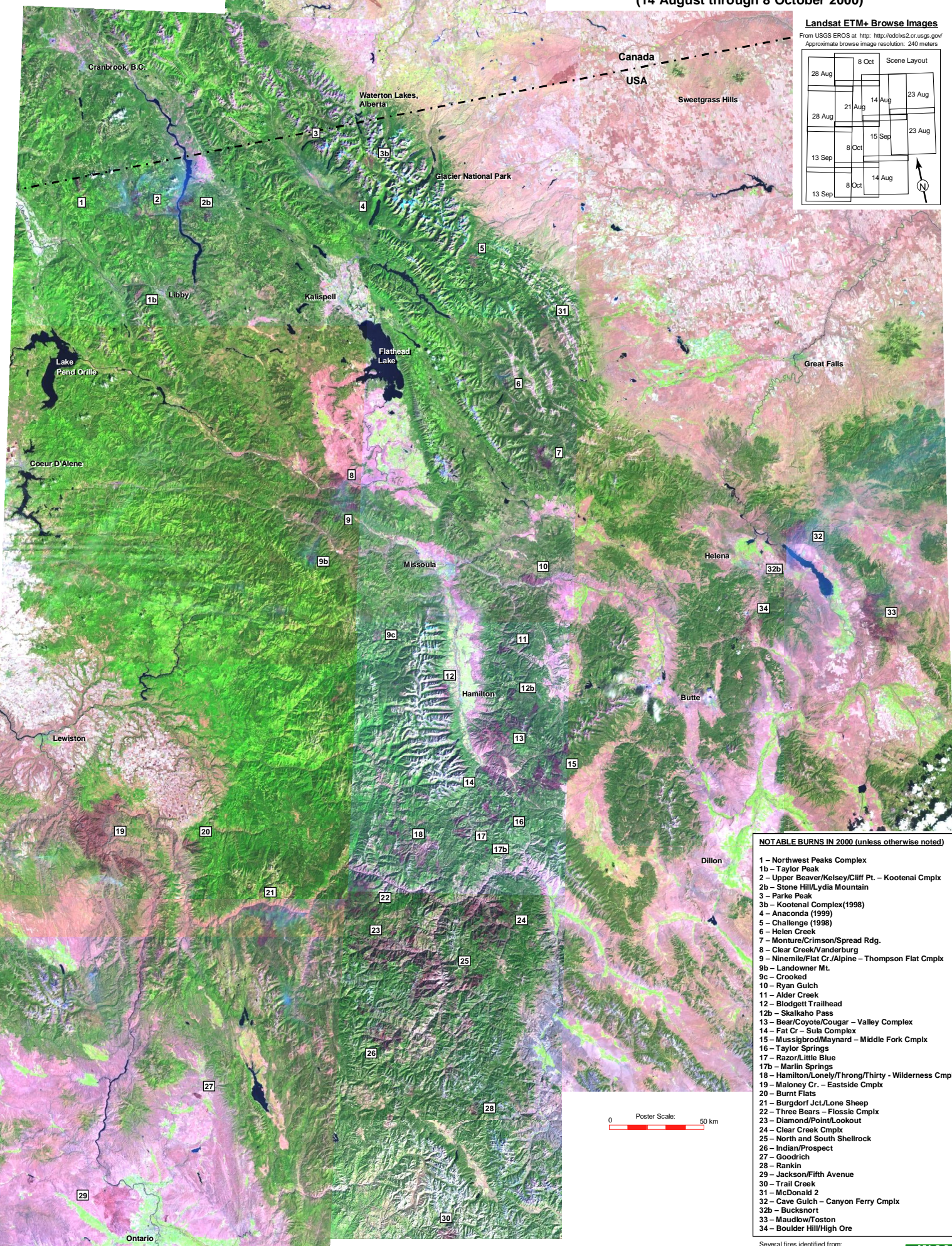
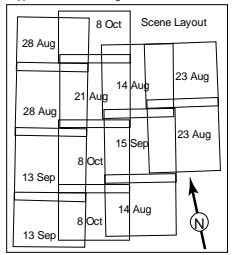


# 2000 Wildfires of Western Montana and Idaho (14 August through 8 October 2000)

## Landsat ETM+ Browse Images

From USGS EROS at: <http://eddlas2.cr.usgs.gov/>  
Approximate browse image resolution: 240 meters



### NOTABLE BURNS IN 2000 (unless otherwise noted)

- 1 – Northwest Peaks Complex
- 1b – Taylor Peak
- 2 – Upper Beaver/Kelsey/Cliff Pt. – Kootenai Cmplx
- 2b – Stone Hill/Lydia Mountain
- 3 – Parke Peak
- 3b – Kootenai Complex(1998)
- 4 – Anaconda (1999)
- 5 – Challenge (1998)
- 6 – Helen Creek
- 7 – Monture/Crimson/Spread Rdg.
- 8 – Clear Creek/Vanderburg
- 9 – Ninemile/Flat Cr./Alpine – Thompson Flat Cmplx
- 9b – Landowner Mt.
- 9c – Crooked
- 10 – Ryan Gulch
- 11 – Alder Creek
- 12 – Blodgett Trailhead
- 12b – Skalkaho Pass
- 13 – Bear/Coyote/Cougar – Valley Complex
- 14 – Fat Cr – Sula Complex
- 15 – Mussigbrod/Maynard – Middle Fork Cmplx
- 16 – Taylor Springs
- 17 – Razor/Little Blue
- 17b – Marlin Springs
- 18 – Hamilton/Lonely/Throng/Thirty - Wilderness Cmplx
- 19 – Maloney Cr. – Eastside Cmplx
- 20 – Burnt Flats
- 21 – Burgdorf Jct./Lone Sheep
- 22 – Three Bears – Flossie Cmplx
- 23 – Diamond/Point/Lookout
- 24 – Clear Creek Cmplx
- 25 – North and South Shellrock
- 26 – Indian/Prospect
- 27 – Goodrich
- 28 – Rankin
- 29 – Jackson/Fifth Avenue
- 30 – Trail Creek
- 31 – McDonald 2
- 32 – Cave Gulch – Canyon Ferry Cmplx
- 32b – Bucksnot
- 33 – Maudlow/Toston
- 34 – Boulder Hill/High Ore

