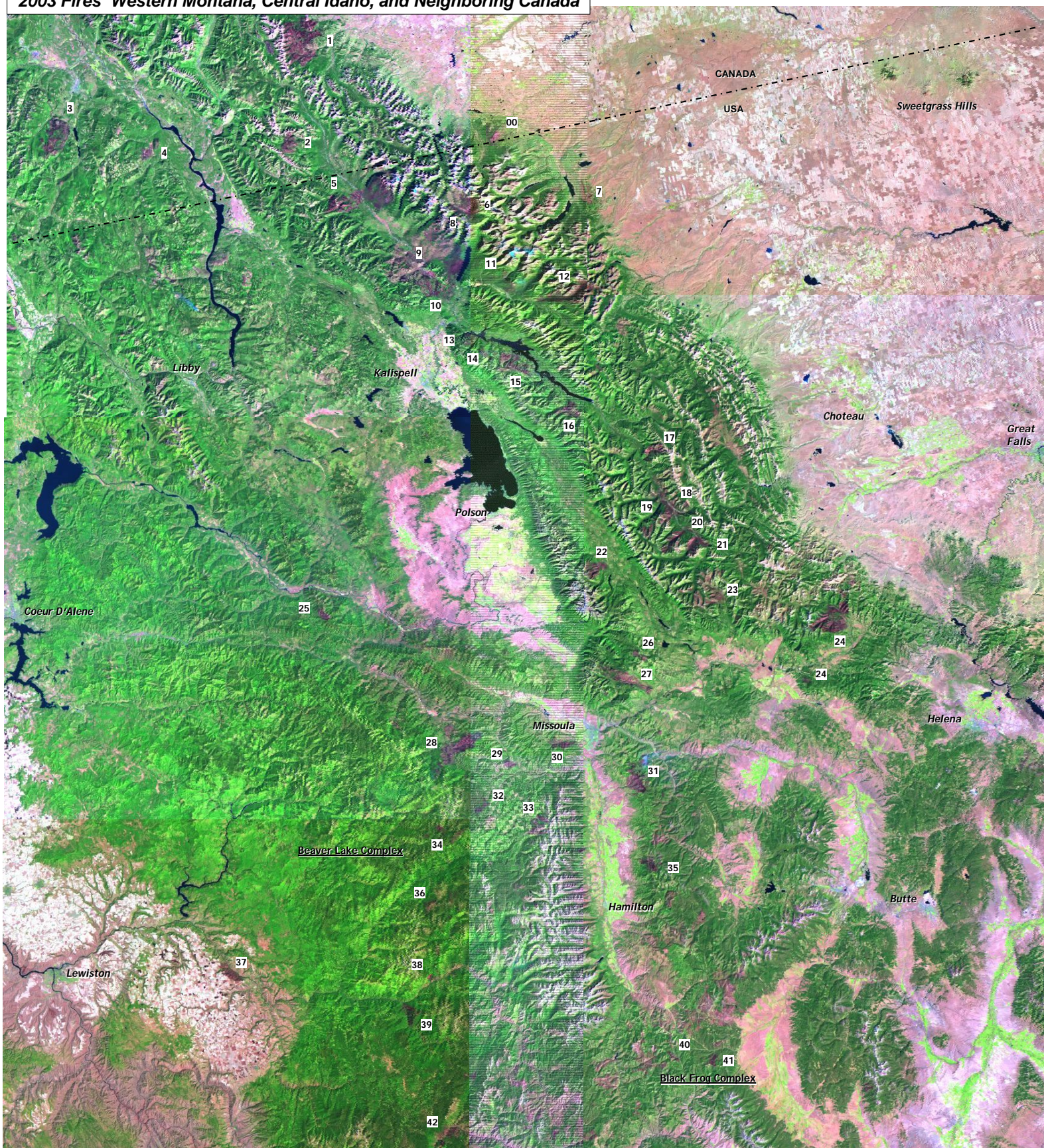


# 2003 Fires Western Montana, Central Idaho, and Neighboring Canada



Landsat Scenes		
09/30/03	10/01/03	10/02/03
08/29/03	08/30/03	10/02/03
08/29/03	08/30/03	08/31/03

Compiled by Carl Key, USGS Northern Rocky Mountain Science Center, rev. Sept. 2007  
 Landsat TM browse images: USGS EROS - <http://edcims2.cr.usgs.gov/>  
 Fire names and locations: USGS GeoMac - <http://geomac.usgs.gov/>

- |                               |                                     |                                    |
|-------------------------------|-------------------------------------|------------------------------------|
| 00 – Poll Haven, U.S.-Alberta | 13 – Beta Doris                     | 30 – Black Mountain                |
| 1 – Lost Creek, Alberta       | 14 – Doe Bucks                      | 31 – Cooney Ridge Complex          |
| 2 – Ram Creek, B.C.           | 15 – Blackfoot Complex              | 32 – Hopeful 2                     |
| 3 – Lamb Creek, B.C.          | 16 – Ball Creek                     | 33 – Beaver Lake                   |
| 4 – Plumbob Mountain, B.C.    | 17-21 – Little Salmon Creek Complex | 34 – Mink 2, Spring Doe, Bears Oil |
| 5 – Wedge Canyon              | 22 – Crazy Horse                    | 35 – Gold 1                        |
| 6 – Trapper                   | 23 – 2000 Monture + 2001 Birk       | 36 – Fish                          |
| 7 – 2004 Fox Creek            | 24 – Lincoln Complex                | 37 – Milepost 59                   |
| 8 – Wolf Gun                  | 25 – Cherry Creek                   | 38 – Pinchot, Saddle Fork          |
| 9 – 2001 Moose + 1999 + 1994  | 26 – Mineral Boles                  | 39 – Silms                         |
| 10 – Robert                   | 27 – Mineral-Primm                  | 40 – Frog Pond                     |
| 11 – Middle Fork Complex      | 28 – Fish Creek Complex             | 41 – Blackwall                     |
| 12 – Rampage Complex          | 29 – North Howard Complex           | 42 – Sapp                          |

