

Figure 8. Projected 1998 age distribution (year classes noted on top of bars) and long-term average (solid line) for eastern Bering Sea pollock.

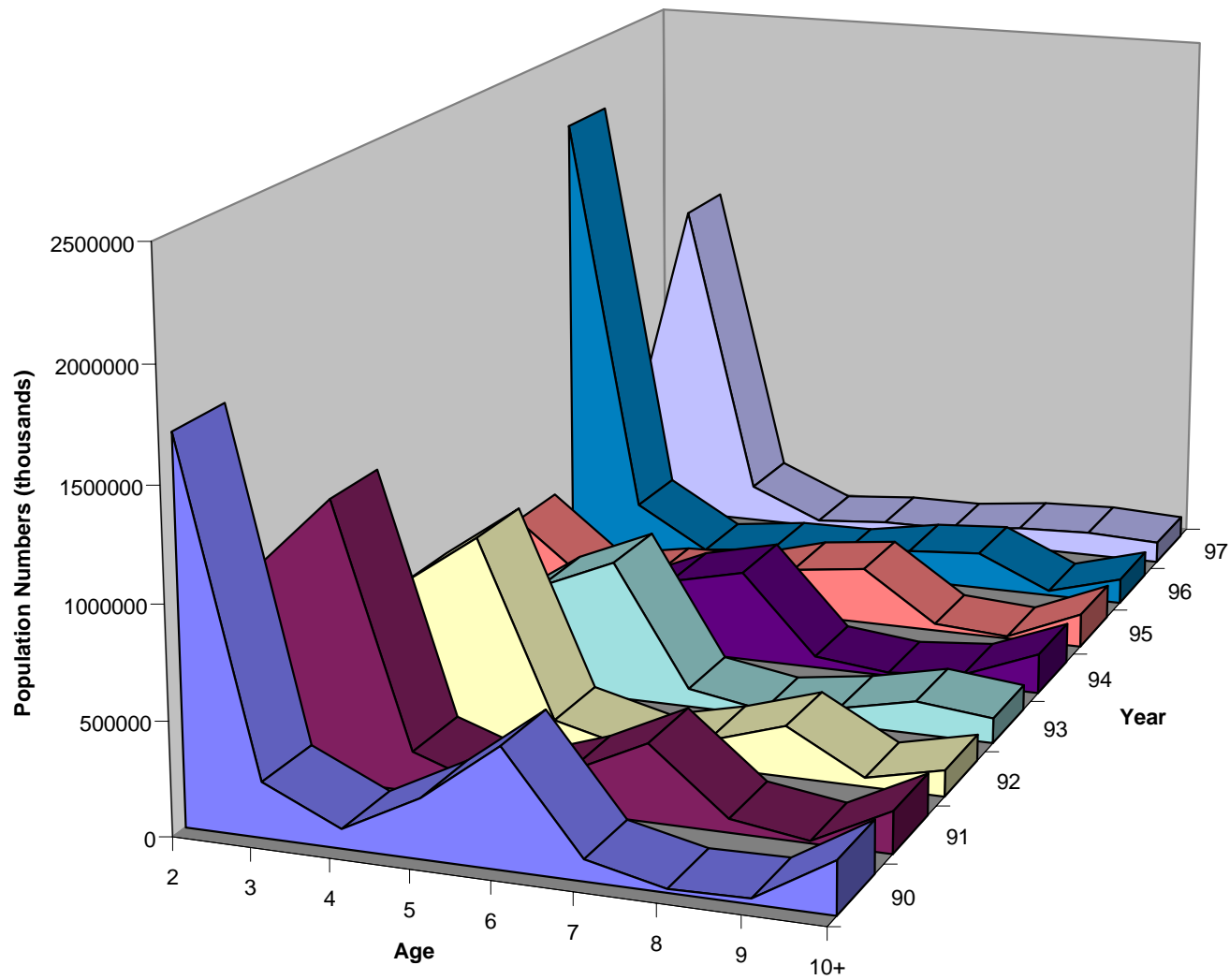


Figure 9. Estimated population numbers at age for walleye pollock in the western and central regulatory areas of the Gulf of Alaska, 1990 through 1997.

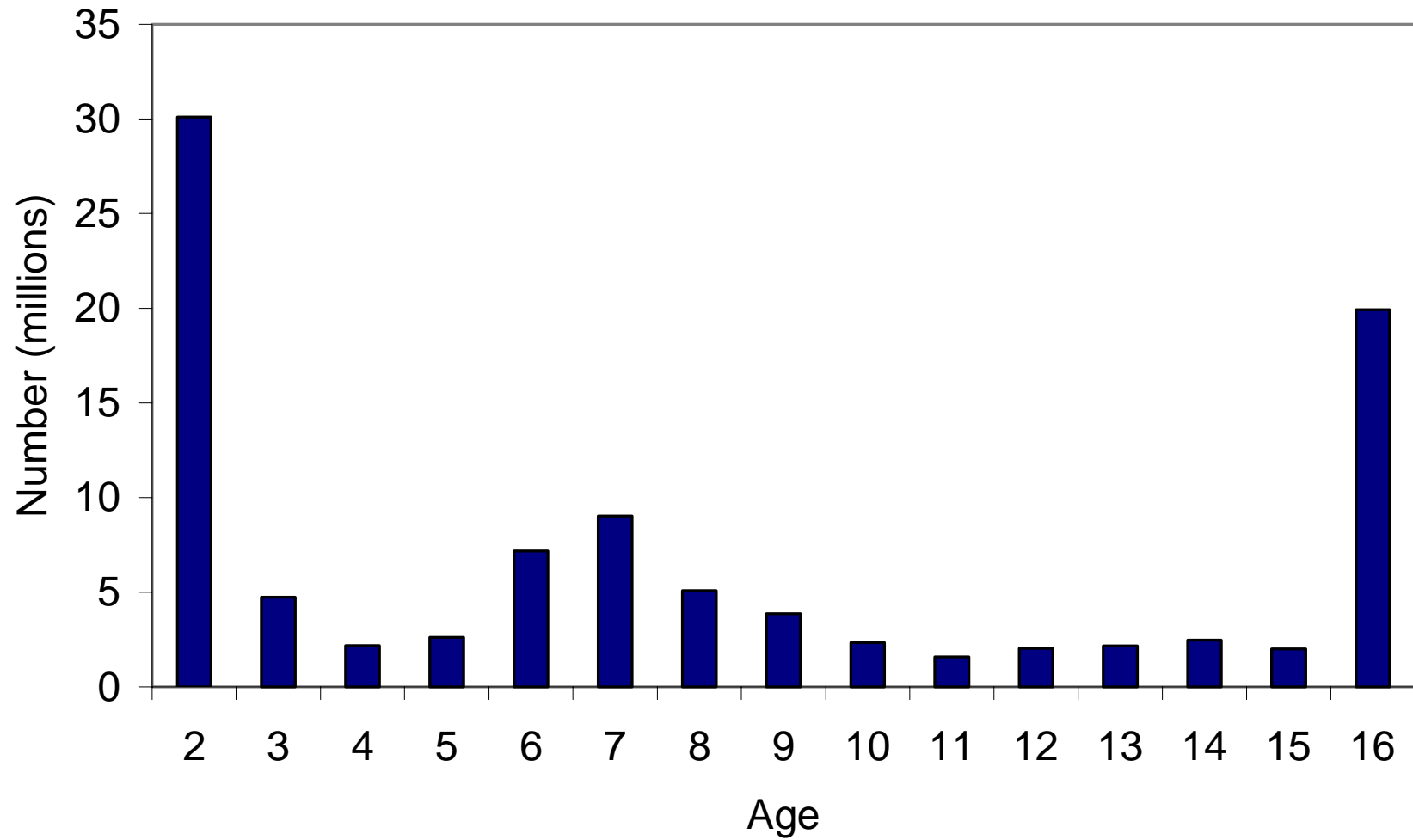


Figure 10. Estimated numbers (in millions) of sablefish at age in 1997. Ages 2 through 16+ are shown as these ages represent the recruited population, for which the best estimates of abundance exist.

1997 Atka Mackerel Estimated Age Composition

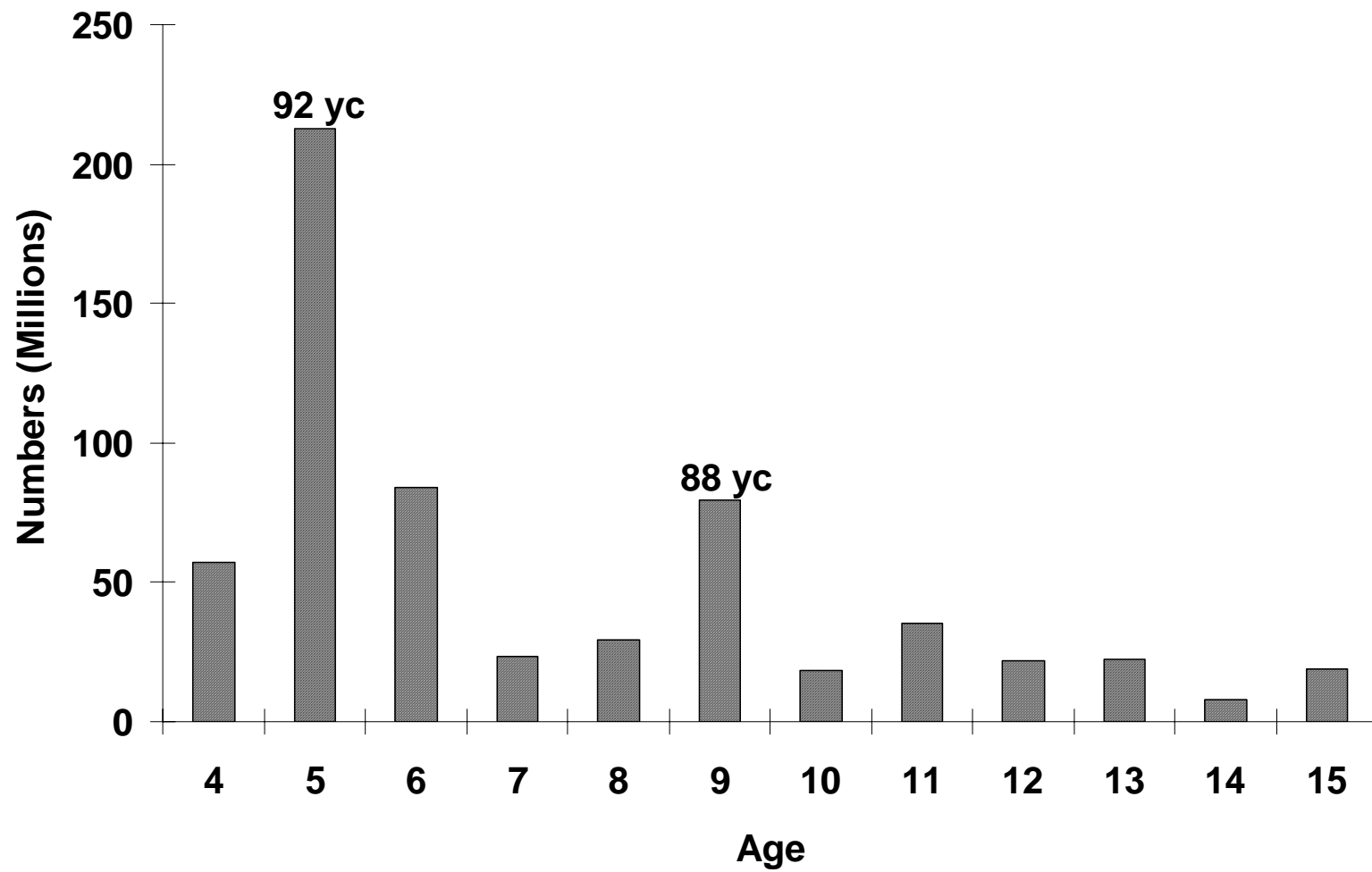


Figure 11. Estimated age composition of Bering Sea and Aleutian Islands Atka mackerel, 1997.

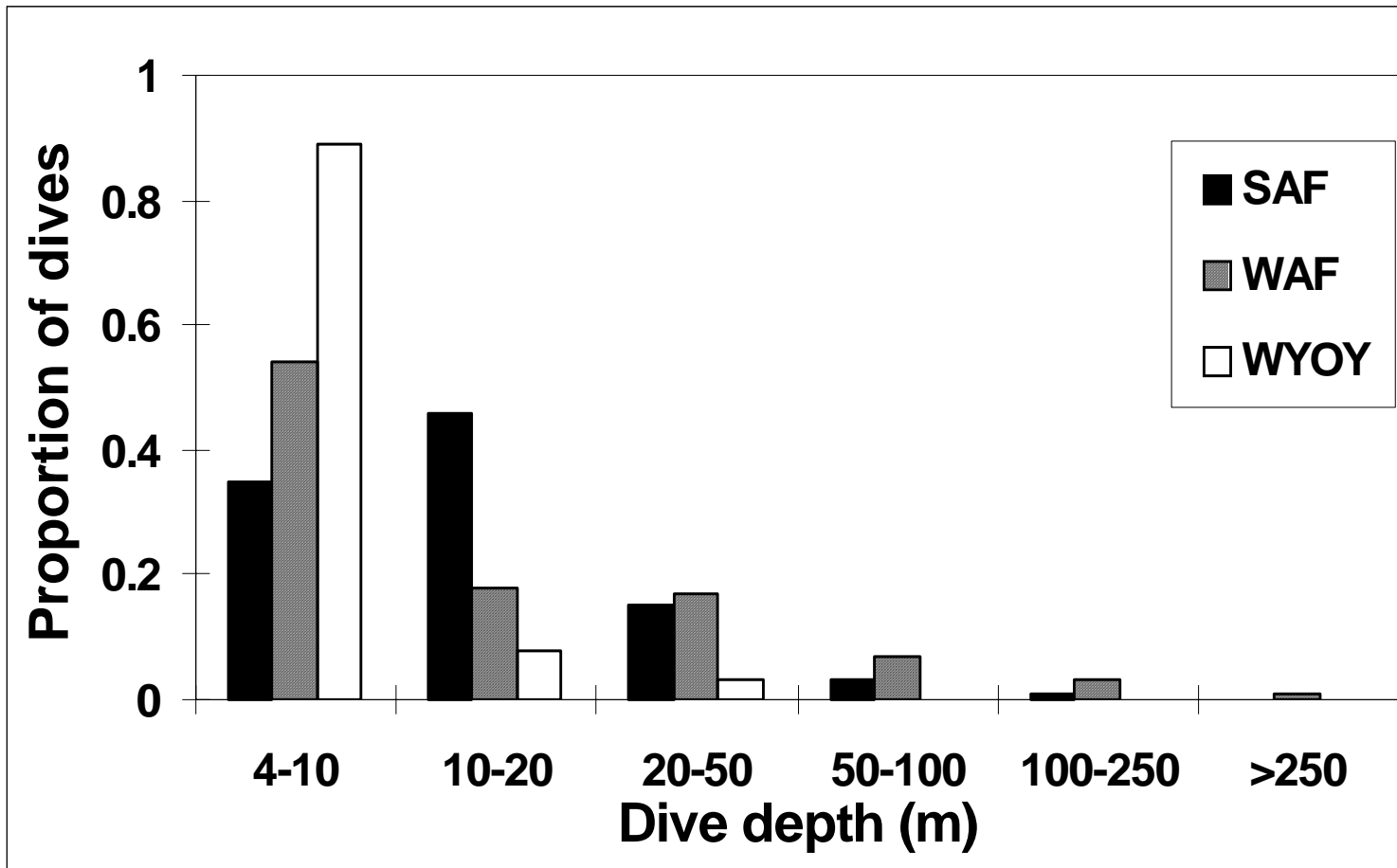


Figure 13. Proportion of dives by depth range for young-of-the-year (WYOY) and adult female Steller sea lions in summer (SAF) and winter (WAF) tracked during 1990-1993 (from Merrick and Loughlin 1997).

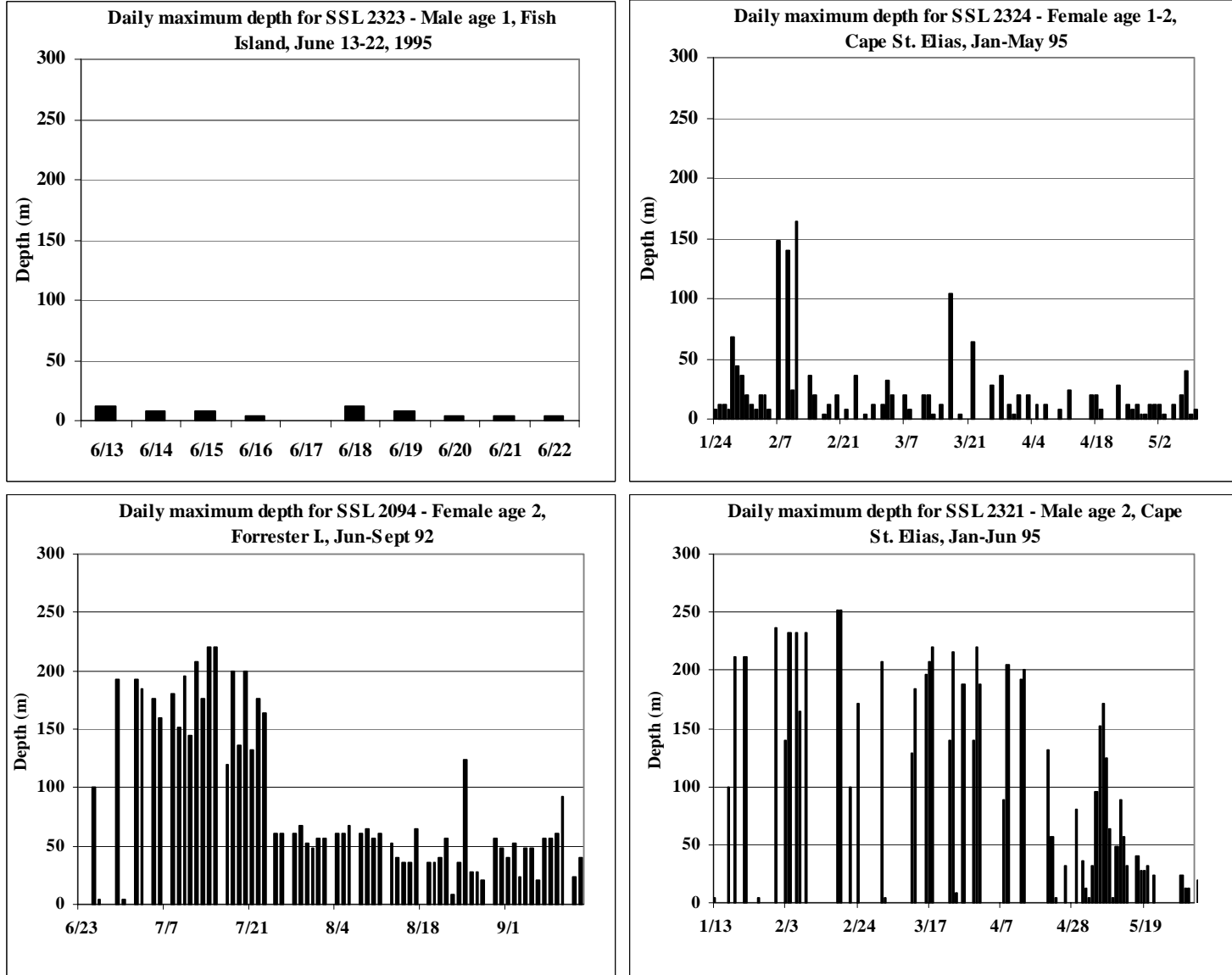


Figure 14. Maximum daily dive depths for four juvenile Steller sea lions (based on data from U. Swain, Alaska Department of Fish and Game).

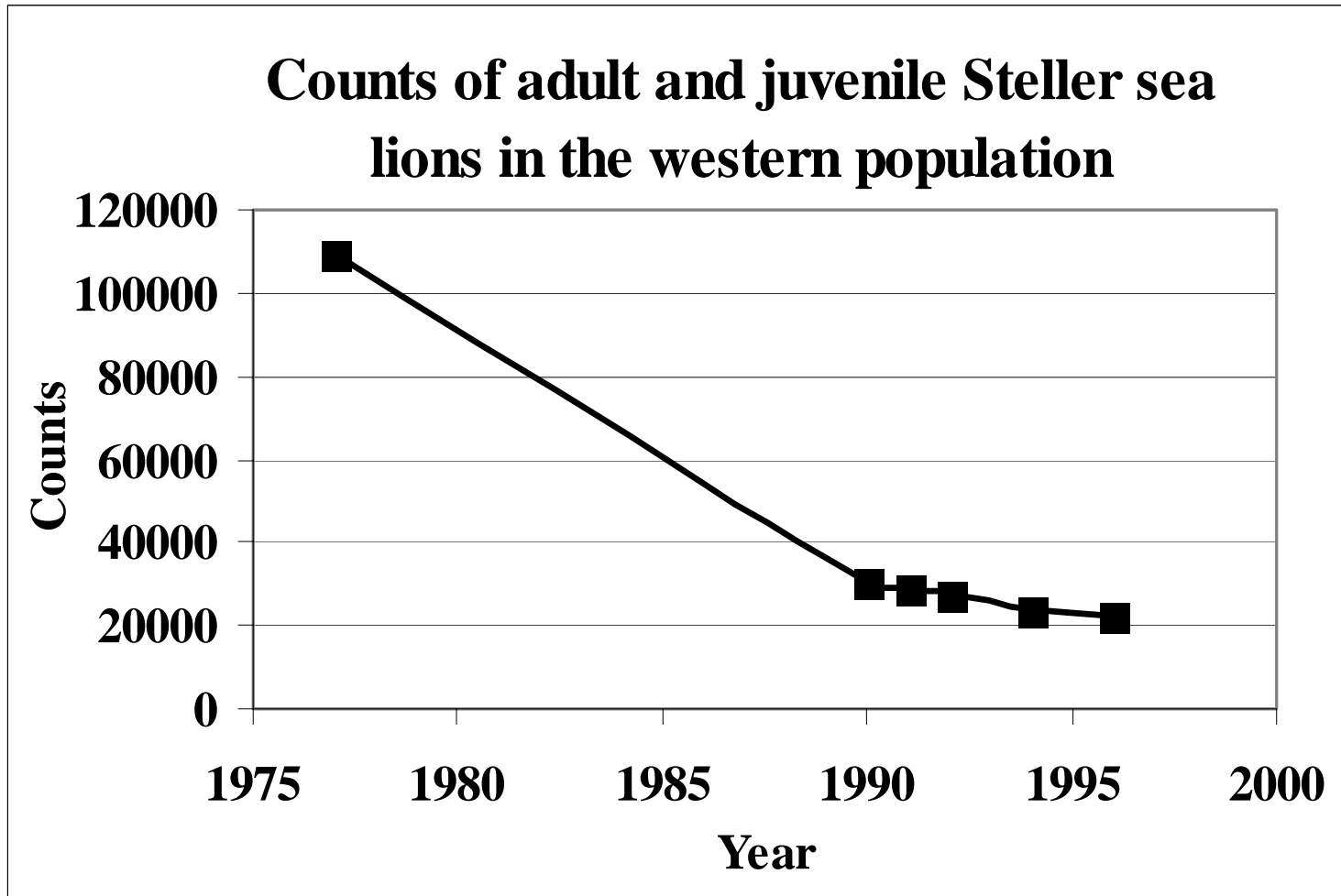


Figure 15. Counts of adult and juvenile Steller sea lions in the western population.

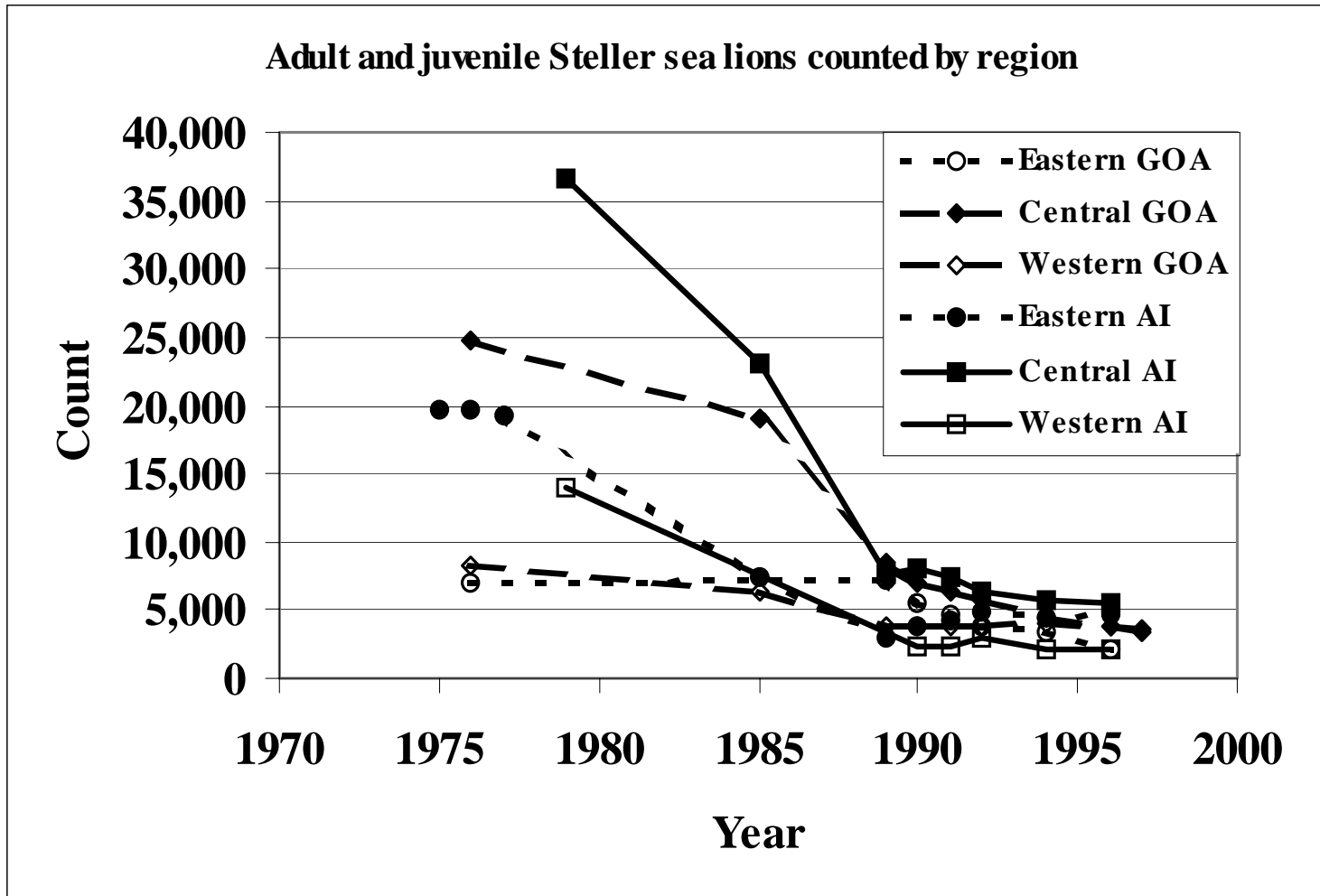


Figure 16. Counts by region of adult and juvenile Steller sea lions in the western population.

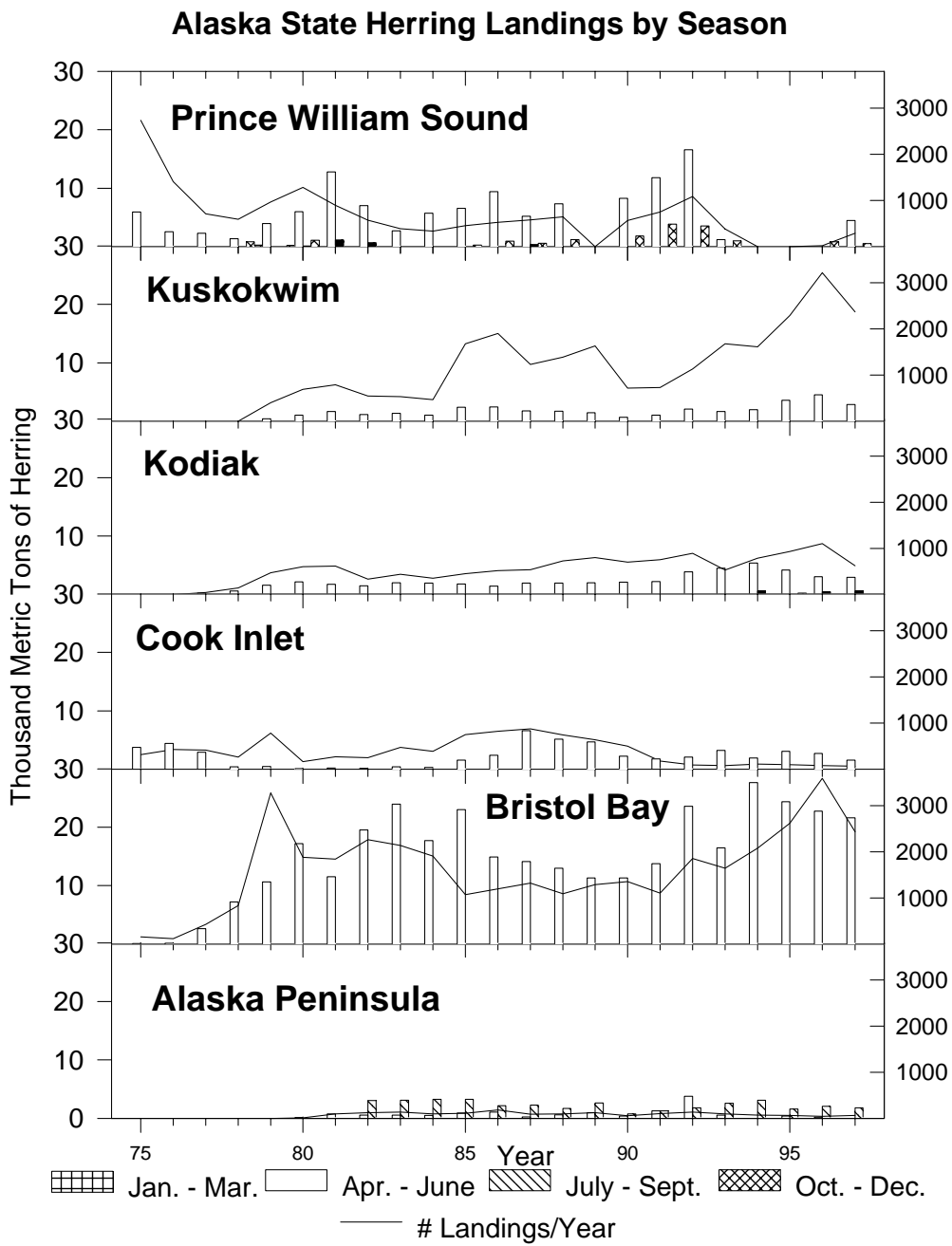


Figure 18a. Seasonal commercial catch of herring and annual number of landings in Alaska State waters. Bars indicate harvest amounts by 3-month seasons. The line indicates the number of landings/year (right axis), based on fish ticket data from the Alaska Department of Fish and Game.

Alaska State Shellfish Landings by Season

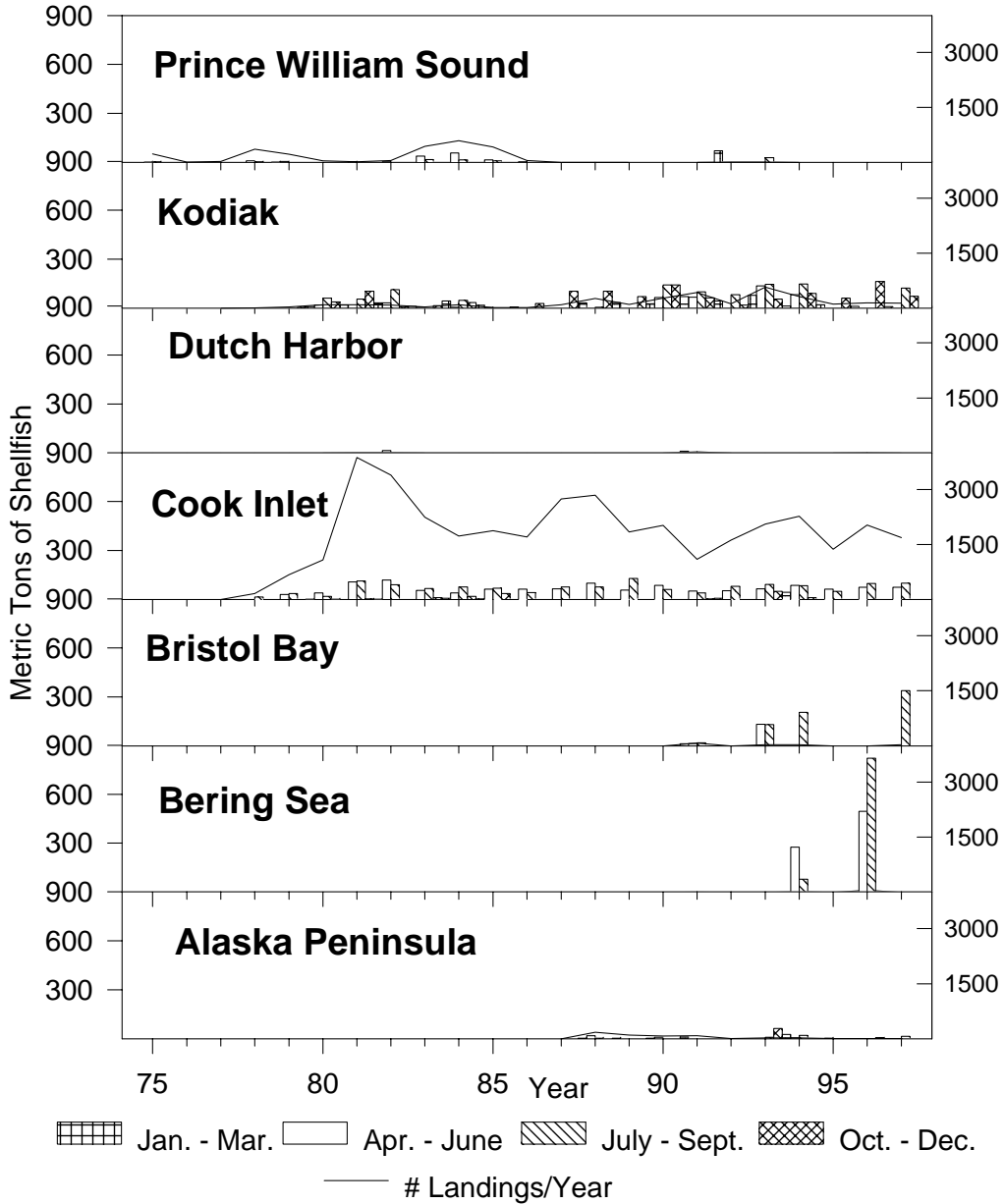


Figure 19a. Seasonal commercial catch of miscellaneous shellfish (excluding crab) and annual number of landings in Alaska State waters. Bars indicate harvest amounts by 3-month seasons. The line indicates the number of landings/year (right axis), based on fish ticket data from the Alaska Department of Fish and Game.

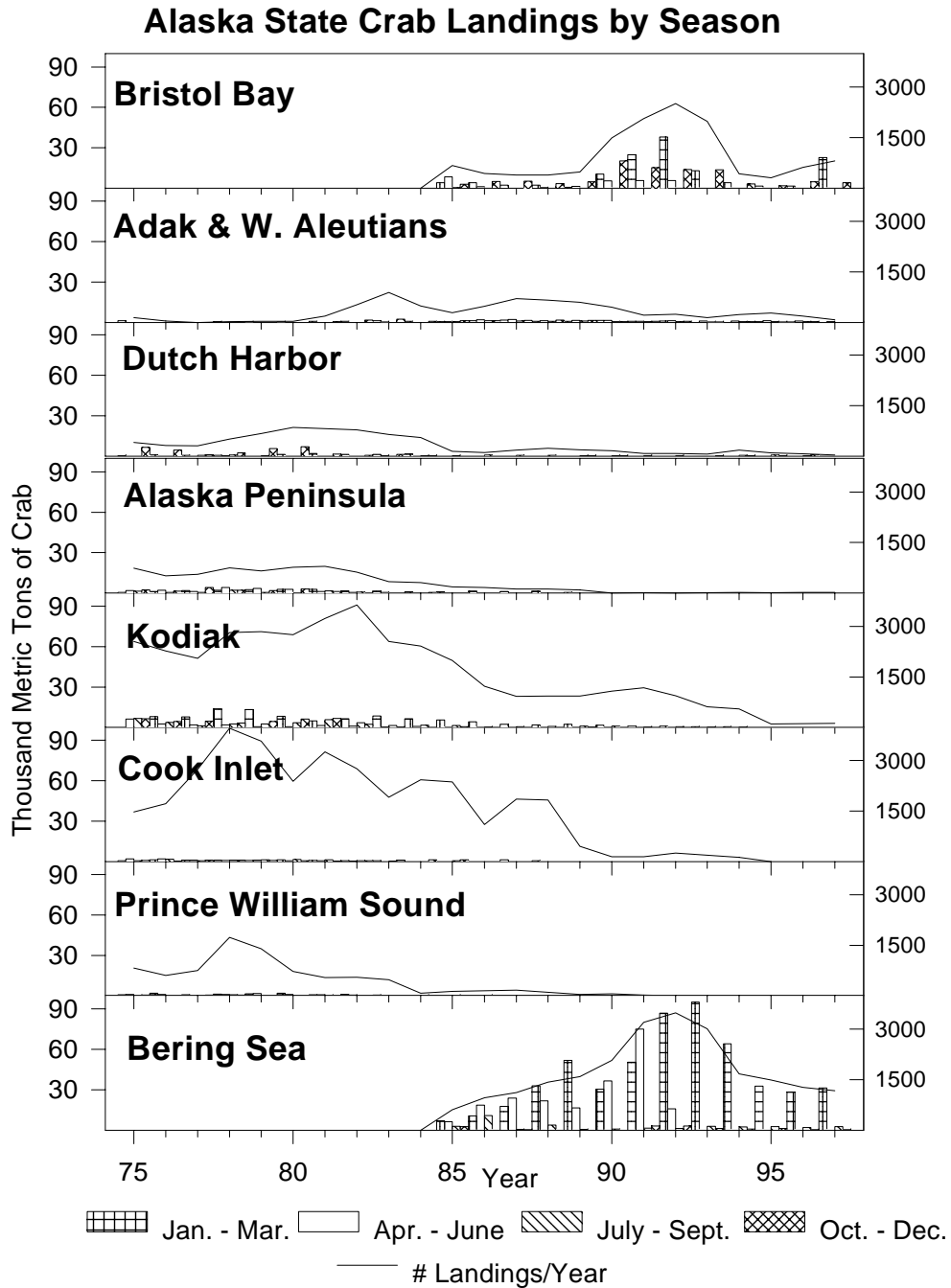


Figure 20a. Seasonal commercial catch of crab and annual number of landings in Alaska State waters. Bars indicate harvest amounts by 3-month seasons. The line indicates the number of landings/year (right axis), based on fish ticket data from the Alaska Department of Fish and Game.

Alaska State Shrimp Landings by Season

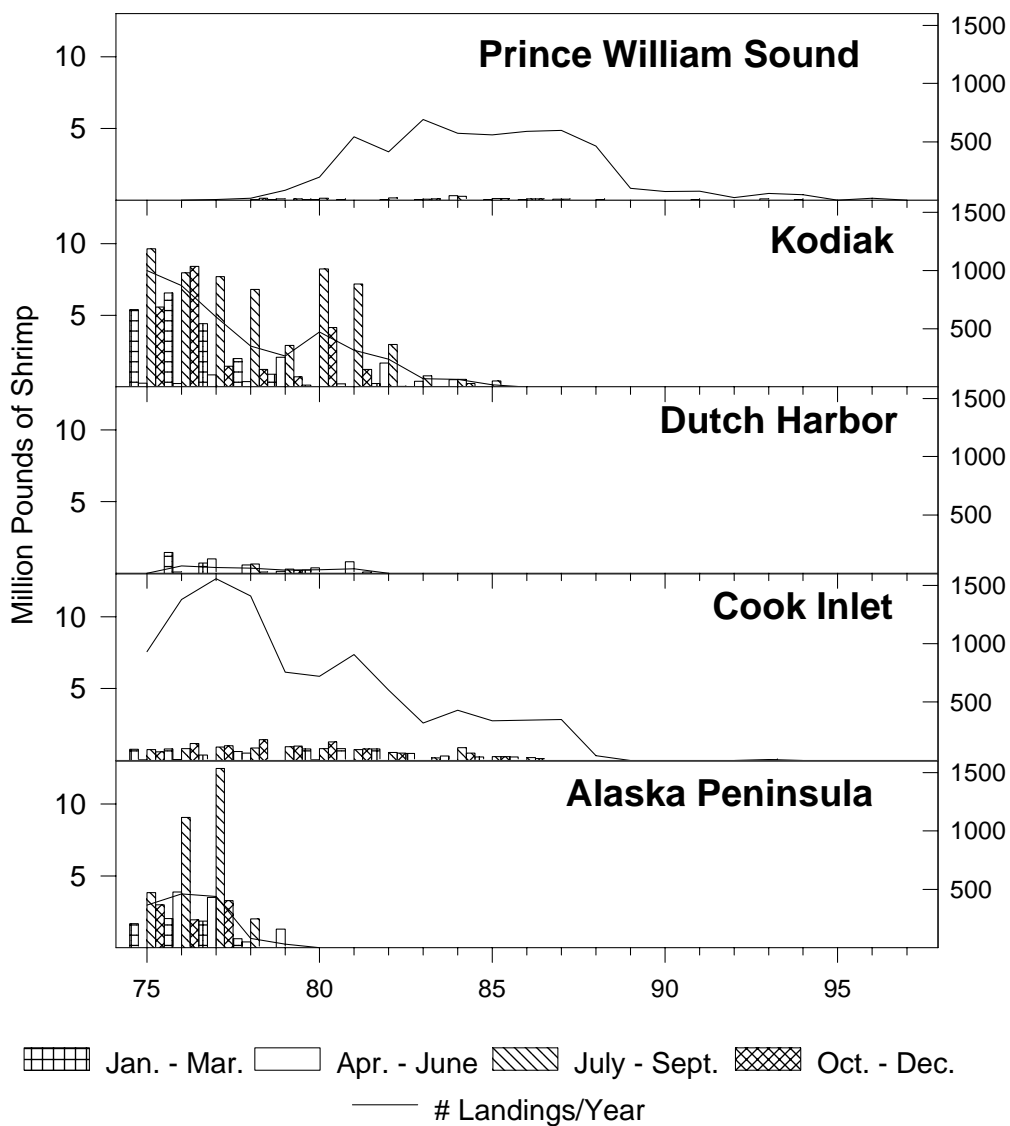


Figure 21a. Seasonal commercial catch of shrimp and annual number of landings in Alaskan waters other than in southeast Alaska or near Yakutat. Bars indicate harvest amounts by 3-month seasons. The line indicates the number of landings/year (right axis), based on fish ticket data from the Alaska Department of Fish and Game.

Alaska State Salmon Landings by Season

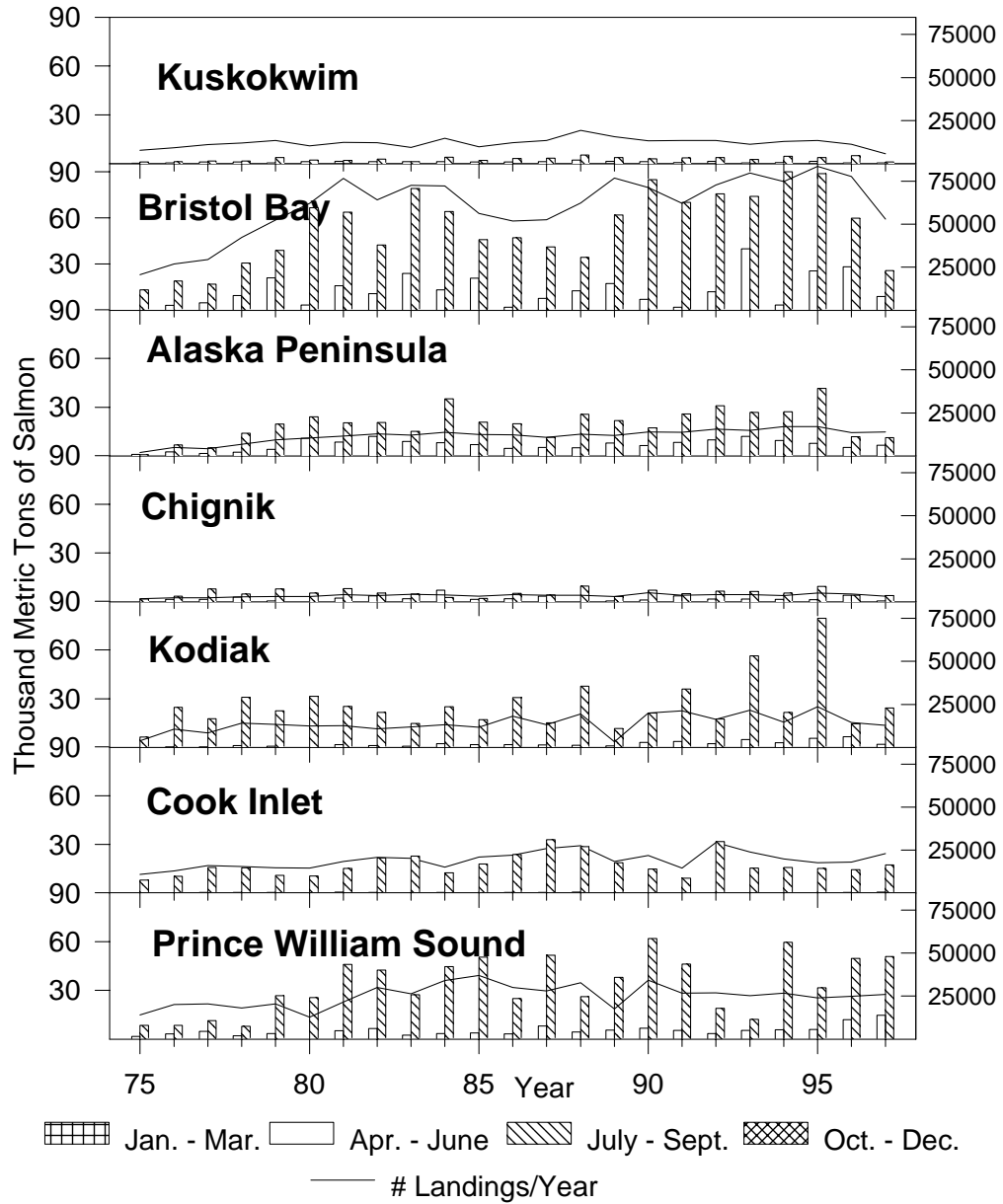


Figure 22a. Seasonal commercial catch of salmon and annual number of landings in Alaska State waters. Bars indicate harvest amounts by 3-month seasons. The line indicates the number of landings/year (right axis), based on fish ticket data from the Alaska Department of Fish and Game.

