

CHART 2

Nationwide, injury and illness rates in 2005 generally were higher for midsize establishments employing 50 to 249 workers than for smaller or larger establishments, although this pattern did not hold for all industries.

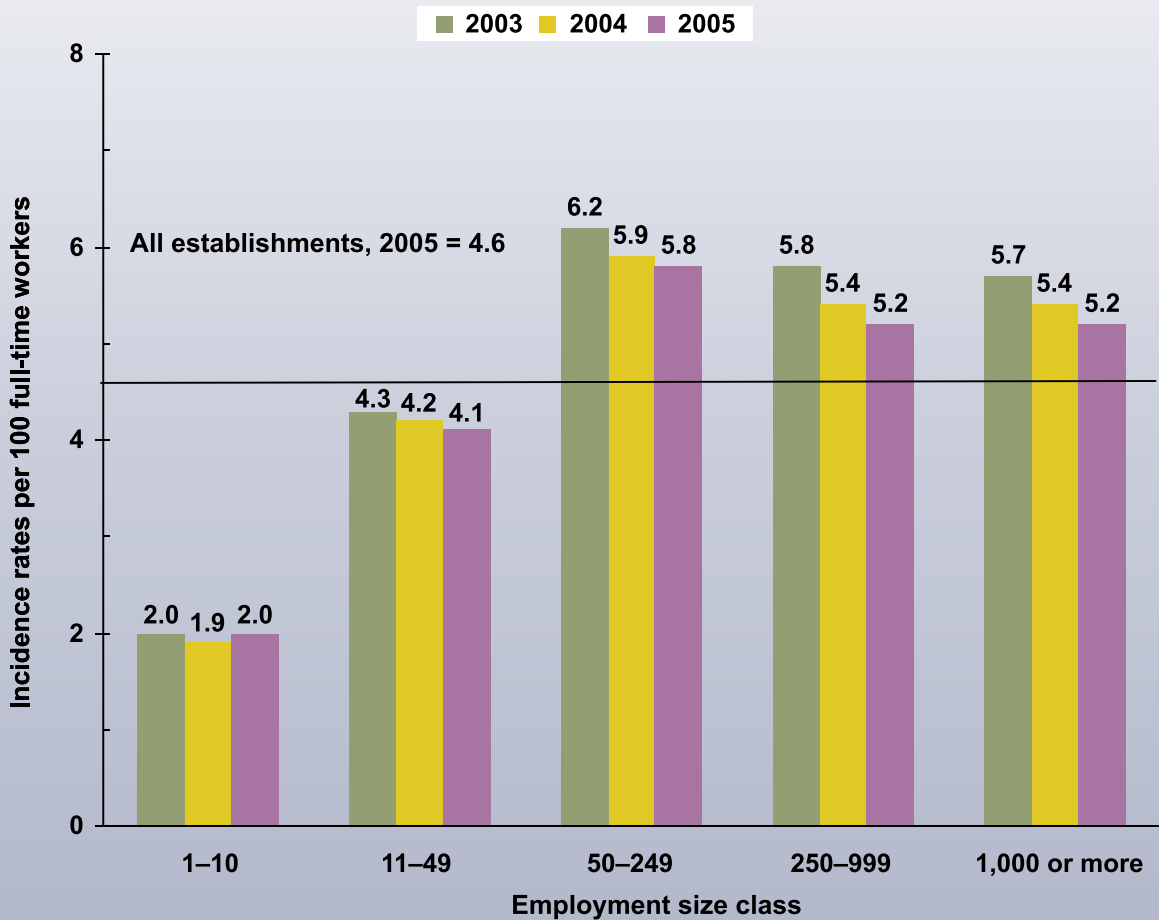
Compared with other establishments, those employing 10 or fewer workers had the lowest rates in 2005, with 2.0 cases per 100 full-time workers.

Midsize establishments—those employing 50 to 249 workers—reported the highest rate: 5.8 cases per 100 full-time workers.

Although incidence rates remained relatively unchanged for establishments employing fewer than 1,000 workers, the rate for large establishments (those employing 1,000 or more workers) declined significantly in 2005. The rate of 5.2 cases per 100 full-time workers in 2005 was down from 5.4 in 2004.



Total recordable nonfatal occupational injury and illness incidence rates, by employment size class, private industry, 2003–05



Source: U.S. Bureau of Labor Statistics, U.S. Department of Labor, October, 2006