
From: Garry L. Novak [GLN@headlitescorp.com]
Sent: Friday, February 10, 2006 4:56 PM
To: zzMSHA-Standards - Comments to Fed Reg Group
Cc: Gary Lesley; Jonathan
Subject: RIN 1219-AB-44

This e-mail is in response to the call for public comment by Acting US Assistant Labor Secretary David Dye, for information concerning new technologies for MINE SAFETY to be discussed at future public hearings. Please see the attached file with information and description of electroluminescent light-by-wire products from ELMO-America featuring LyTec™ EL Wire.

The **A-200 ELMO-Lyte™** is a 200 ft. portable, electroluminescent light-by-wire system that assists emergency responders with moving people quickly and safely in the right direction in dark, smoky or otherwise very low visibility environments such as an underground mine. Having a brightly illuminated wire available to clearly identify a pathway to safety would appear to be a natural solution to many unexpected emergency scenarios associated with underground mining. The **ELMO-Lyte™** is powered by "AA" batteries that provide 6 hours of steady illumination without having to change batteries. It has been widely accepted by law enforcement, fire service and USAR as an invaluable tool for confined space/collapsed structure evacuation as well as for water search & rescue and perimeter delineation during emergency events. It is currently in use with FD search and rescue teams, collapsed structure/confined space rescue and government critical infrastructure emergency preparedness. Since introducing the **A-200 ELMO-Lyte™** in mid-2005, there have been more than 170 units shipped to locations across the country and the world.

ELMO is about guiding people safely and quickly in the right direction with light – the most basic and universal emergency response tool for mine safety.

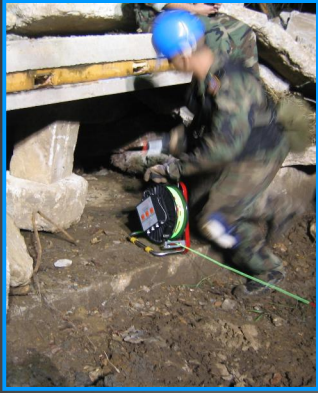
Thank you for your consideration of this information. If you would like additional information or would like to discuss other possible applications for **E**nhanced **L**inear **M**obile **O**ptic lighting from ELMO-America™, please call me at 800-777-5630.

Regards,

Garry L. Novak

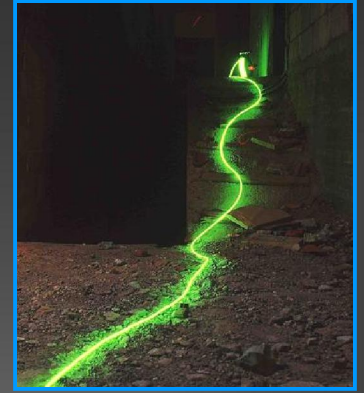
*Garry L. Novak
Head Lites Corporation
2280 Ventura Drive
Saint Paul, MN 55125
651.730.7000
800.777.5630
651.324.4237 (cell)
651.730.5680 (fax)*

**MSHA Docket No.
AB44-Comm-19**



ELMO-Lyte™

Light the Way to a Safer Rescue



APPLICATIONS:

- ⊗ Mass Evacuation
- ⊗ Collapsed Structure
- ⊗ Confined Space
- ⊗ Area Delineation
- ⊗ Ingress / Egress
- ⊗ Stairway Illumination
- ⊗ Water/Dive Rescue
- ⊗ Attack Line Illumination
- ⊗ Power Loss
- ⊗ Demolition

FEATURES:

- ⊗ 200' LyTec® EL Wire
- ⊗ Steady / Flash Modes
- ⊗ 6 hrs+ Battery Power
- ⊗ Custom Pelican® Case
- ⊗ All-Weather Capable
- ⊗ Easy Operations
- ⊗ Water / Chemical Resistant
- ⊗ Robust Construction
- ⊗ Directional Markings
- ⊗ Three Colors Available



A-200 Series



Enhanced Linear Mobile Optic Lighting Systems

from

ELMO-America™

2280 Ventura Dr.
St. Paul, MN 55125
800-777-5630

MSRP \$2969



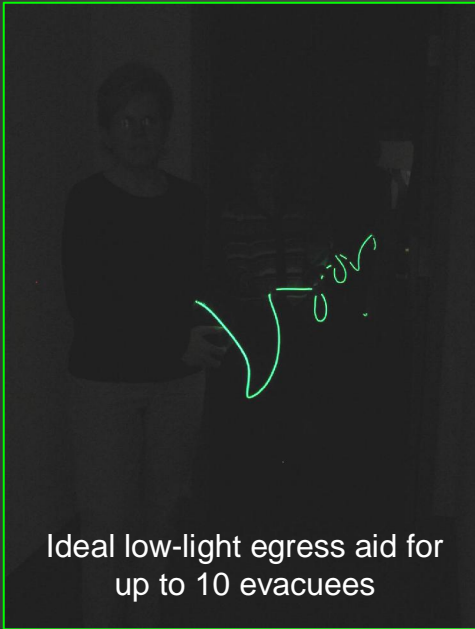
3M Scotchlite™
Reflective Material

www.ELMO-America.com

GSA Pricing Available

ELMO-Lyte™

Light the Way to a Safer Rescue



Ideal low-light egress aid for up to 10 evacuees



A-25 Series

MSRP - \$295

25' Electro-Luminescent, Linear Light System for Ingress/Egress and Critical Area Delineation.

LyTec® EL Wire from Elam EL Industries, Ltd, Israel.

Colors available: Fluorescent Green, "Ice" Blue and Coral.

Portable – Operates with 4 "AA" Batteries.

Two Modes: STEADY ON and FLASH.

Typical 6 Hour STEADY ON Illumination

Time, 12 Hour FLASH

Illumination Time.



System attached to belt to free the hands

Custom Cordura® Carrier.

Includes White Board, Dry-Erase Marker and Fiber Optic LED Lyte-Tail™.



Safe Door/Exit Illumination



Complete A-25 Personal Tag and Rescue System



White Board for additional visual communications

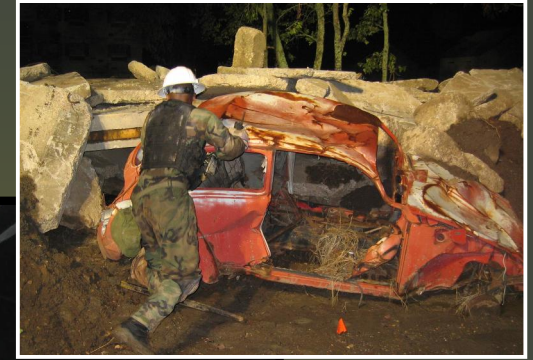


FO Type Lyte-Tail

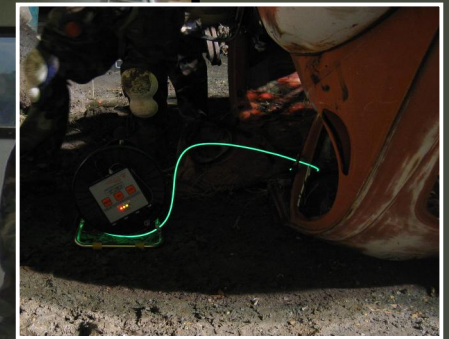
ELMO-America™

See opposite side for ELMO-America™ contact information

A-200 ELMO-Lyte™



Collapsed
Structure
Training



Camp Gruber, OK
August, 2005

[www.ELMO-America](http://www.ELMO-America.com)
800-777-5630

Delineate, Communicate and
Illuminate ... with



E

ELMO®



Enhanced Linear Mobile Optic Lighting...

The darkness can come quickly. And unexpectedly. When you need to move in it, move others through it or stop others from something bad in it, you need effective **Visual Communication ToolsSM** that meet the mission. **Put the light into your hands** with **ELMO[®]** brand **Enhanced Linear Mobile Optic** light tools.

Provide Direction, Vision and Security for Incident Command, Consequence Management and Tactical Response. For surer ingress/egress and mass evacuation of critical infrastructure; **an effective force multiplier**.

Communicate Who, What, Where and Which way... with **ELMO-LyteTM** and **Lyte-Tails[®]** products available only from **HLC** and **Made in the USA**.

Light this way... for effective Visual Communications.



A-200 ELMO-LyteTM



ELMO, ELMO Lyte and Lyte Tails are trademarks of HLC; St. Paul, MN; Visual Communication Tools is a service mark of HLC; St. Paul, MN

A-200 ELMO-Lyte™ Underwater Rescue Application



Visual Communication Tools SM
from

ELMO-America™

800-777-5630 • www.ELMO-America.com