

# Fire Pre-Attack Planning

## How to Use Image Maps



### WHAT IS A PRE-ATTACK PLAN?

A pre-attack plan is a compilation of key information such as maps, contacts, and resources, in a notebook format designed for use by fire emergency response personnel.

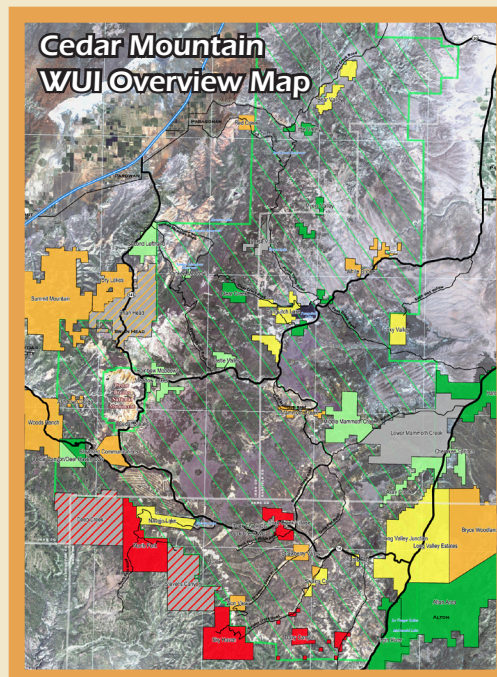
#### The pre-attack plan

- Provides initial scouting in advance of worst-case fire scenario
- Coordinates unified response by multiple agencies and multiple jurisdictions
- Aids residents in determining risks to their property and resources
- Can be used by other emergency responders like law enforcement and emergency medical services (EMS)
- Must be updateable, printable, and accessible

#### Contact:

Vicky Johnson      Taiga Rohrer  
 vjohnson@fs.fed.us      trohrer@fs.fed.us  
 801-975-3759      435-865-4652

A fire pre-attack plan is being developed for the Cedar Mountain wildland/urban interface (WUI) on the **Dixie National Forest** in southern Utah. An important component of the pre-attack plan is a series of maps. These maps show access, roads, parcel boundaries, structures, water supplies, and other information important to firefighters and to firefighter safety. Integrating imagery into a map enhances information in high-stress, time-sensitive situations. Map examples are shown below.



### WUI Overview Maps

- **What It Contains?**
  - District boundary
  - Over 50 wildland/urban interfaces
  - Fire risk ratings
  - Transportation
- **How Is It Used?**
  - Navigation
  - Local planning
  - Public education
  - Orientation for fire crews
- **What Does Imagery Contribute?**
  - Context
  - General land use

### Subdivision Maps

- **What It Contains?**
  - Subdivision with names
  - Parcel boundaries
  - Lots with structures (red polygons)
  - Streets with names
  - Hydrant locations
  - Safety and helicopter landing zones
- **How It Is Used?**
  - Locating structures/people
  - Navigation/orientation
- **What Does Imagery Contribute?**
  - Situational awareness and context
  - General vegetation (fuels)
  - Visual confirmation of safety zones
  - Updates existing information

