

The National Map

<http://nationalmap.usgs.gov/>



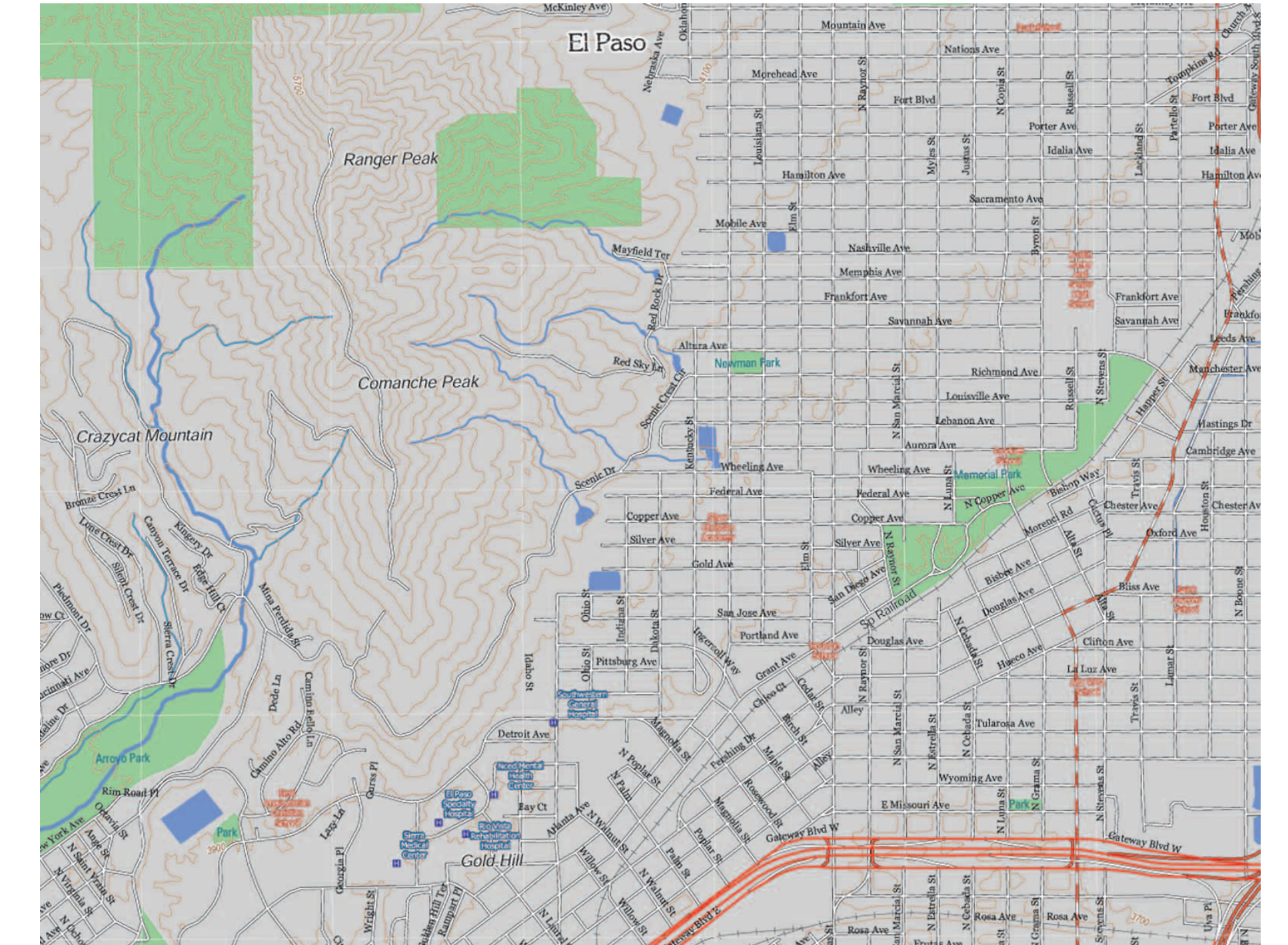
High Resolution orthoimagery aerial view of freeways in the Houston metropolitan area as an example of the 133 Urban Areas mapping program



Digital terrain model created using LIDAR data in Brownsville, which will be integrated into the seamless National Elevation Dataset layer of *The National Map*.



A network system of 1:24K National Hydrography Dataset for an area north of Dallas. The flow line through the reservoir facilitates surface flow modeling during a storm or toxic spill event.



Newly revised 1:24K Texas Topo map available through TNRIS. This example shows a portion of the El Paso quad.

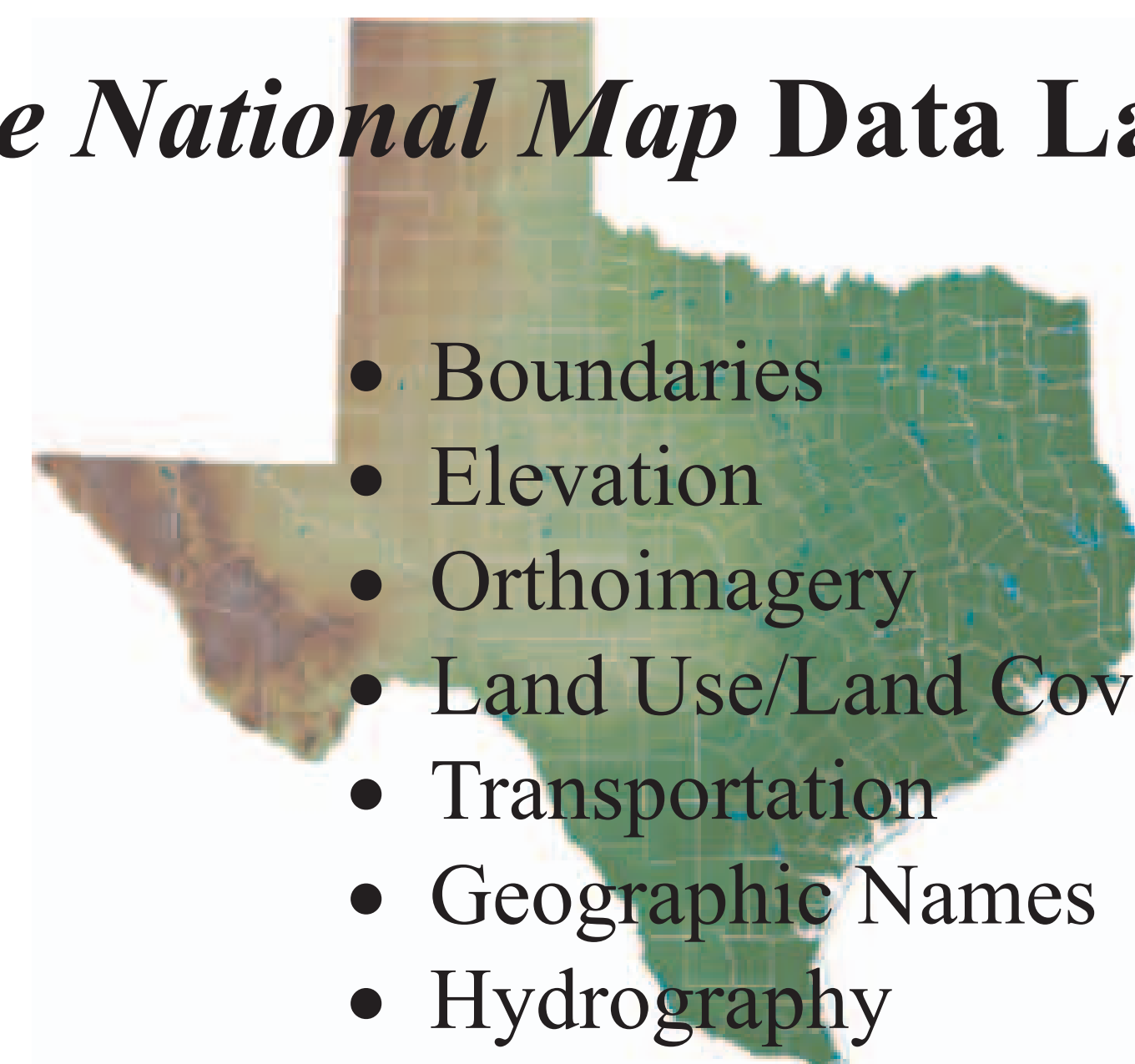
The National Map Vision

The National Map is a consistent framework for geographic knowledge needed by the Nation. It provides public access to high-quality, geospatial data and information from multiple partners to help support decisionmaking by resource managers and the public. *The National Map* is the product of a consortium of federal, state, and local partners who provide geospatial data to enhance America's ability to access, integrate, and apply geospatial data at global, national, and local scales.

The U.S. Geological Survey (USGS) is committed to meeting the Nation's needs for current base geographic data and maps. Our vision is that, by working with partners, we will ensure that the Nation has access to current, accurate, and nationally consistent digital data and topographic maps derived from those data. Your comments and questions about *The National Map* vision, mission, strategies, and partnership opportunities can be sent to nationalmap@usgs.gov.

<http://nationalmap.usgs.gov/>

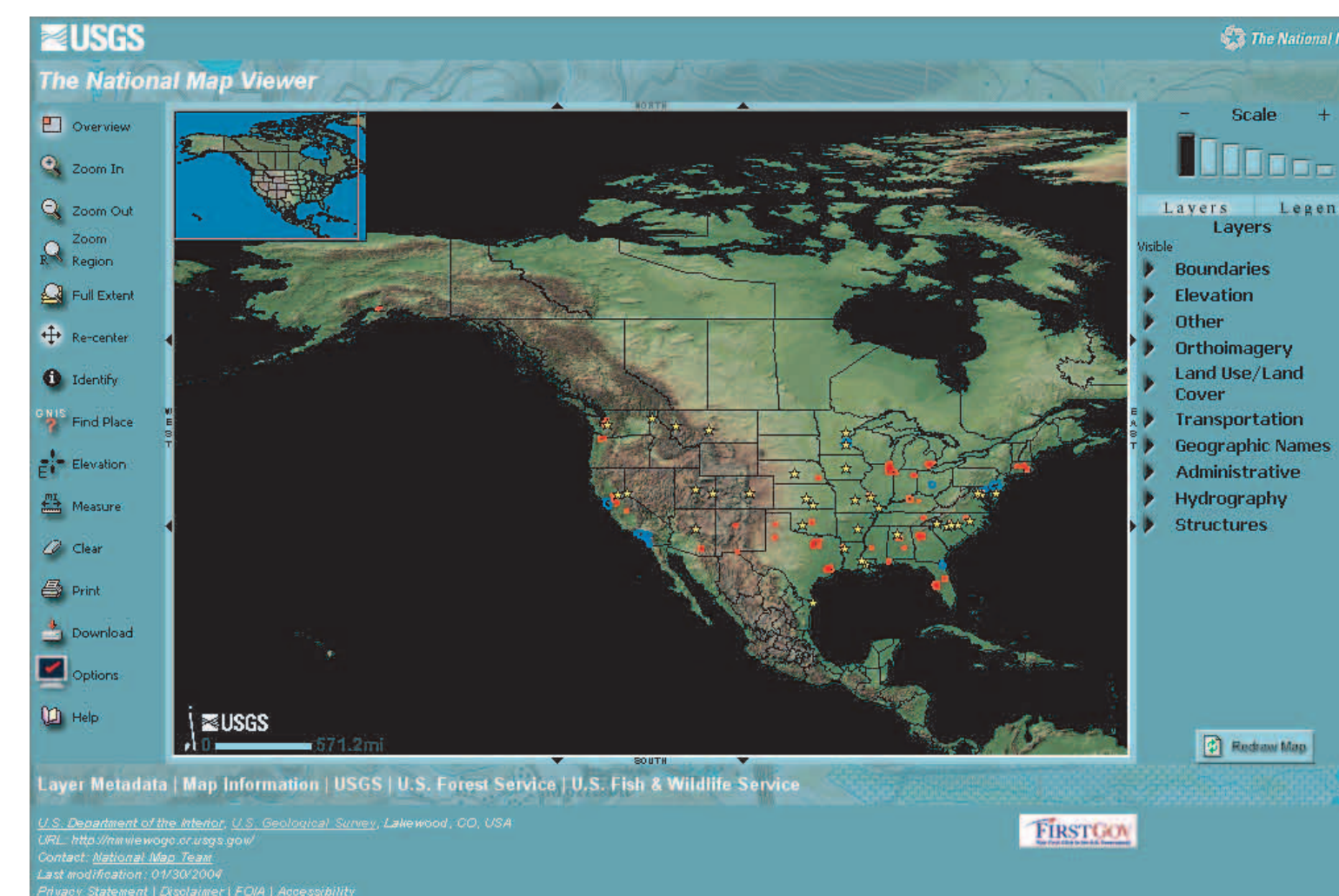
The National Map Data Layers



- Boundaries
- Elevation
- Orthoimagery
- Land Use/Land Cover
- Transportation
- Geographic Names
- Hydrography

The National Map Viewer

<http://nationalmap.usgs.gov>



Texas Mapping Partnership Office

The Texas Mapping Partnership Office (MPO) fosters partnerships with federal, state, and local GIS entities in Texas to develop *The National Map*. The office participates in statewide policy and technical councils related to mapping, assists agencies to standardize data integration to match surrounding states and Mexico, and implements GIScience and applications projects.

The Texas Natural Resource Information System (TNRIS) is USGS's key partner in Texas for production and maintenance of *The National Map* of Texas. The foundation for *The National Map* of Texas is the Strategic Mapping Program, a cooperative cost share program which produced seven revised statewide digital layers at 1:24,000-scale. The publicly available integrated datasets will be viewable through *The National Map*, available for download and as new Texas Topographic maps in pdf format through TNRIS.

<http://tx.usgs.gov/geography/>