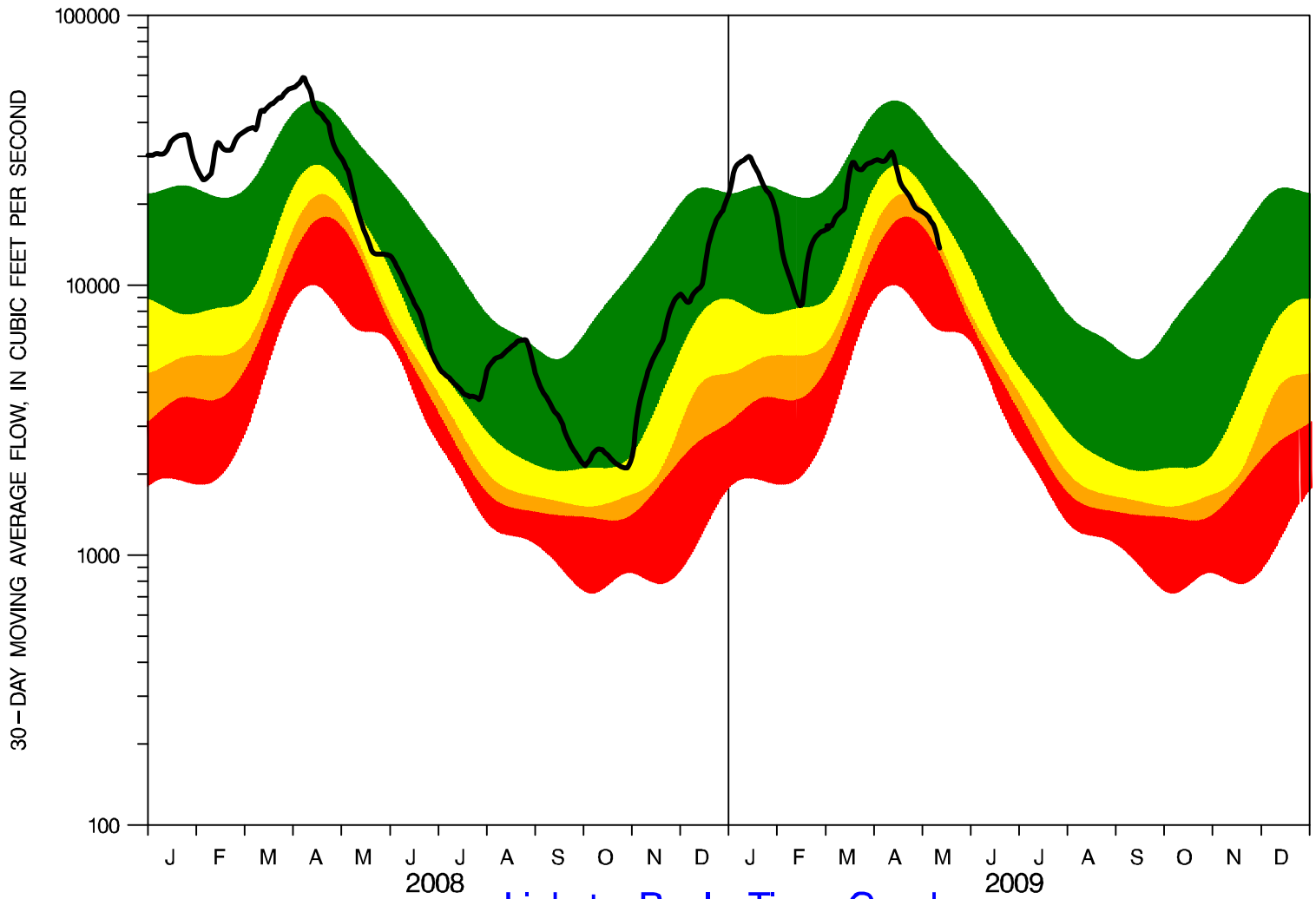


# STATION 01540500 SUSQUEHANNA RIVER AT DANVILLE, PA

US GEOLOGICAL SURVEY PROVISIONAL DATA – SUBJECT TO CHANGE  
30-DAY MOVING AVERAGE DAILY FLOW  
DRAINAGE AREA = 11,220 SQUARE MILES  
BEGIN YEAR=1905 NUMBER OF YEARS=104.0 DATE OF PLOT=05/09/09



[Link to Real-Time Graph](#)

ALL DATA SHOWN ARE BASED ON 30-DAY MOVING AVERAGES; PERCENTILE BANDS HAVE BEEN SMOOTHED.

SOLID LINE = 30-DAY MOVING AVERAGE OF CURRENT DAILY VALUE FLOW

- GREEN (TOP) BAND = 25- TO 75-PERCENTILE FLOWS (NORMAL CONDITIONS)
- YELLOW BAND = 10- TO 25-PERCENTILE FLOWS (DROUGHT WATCH CONDITIONS)
- ORANGE BAND = 5- TO 10-PERCENTILE FLOWS (DROUGHT WARNING CONDITIONS)
- RED (BOTTOM) BAND = 0- TO 5-PERCENTILE FLOWS (DROUGHT EMERGENCY CONDITIONS)