

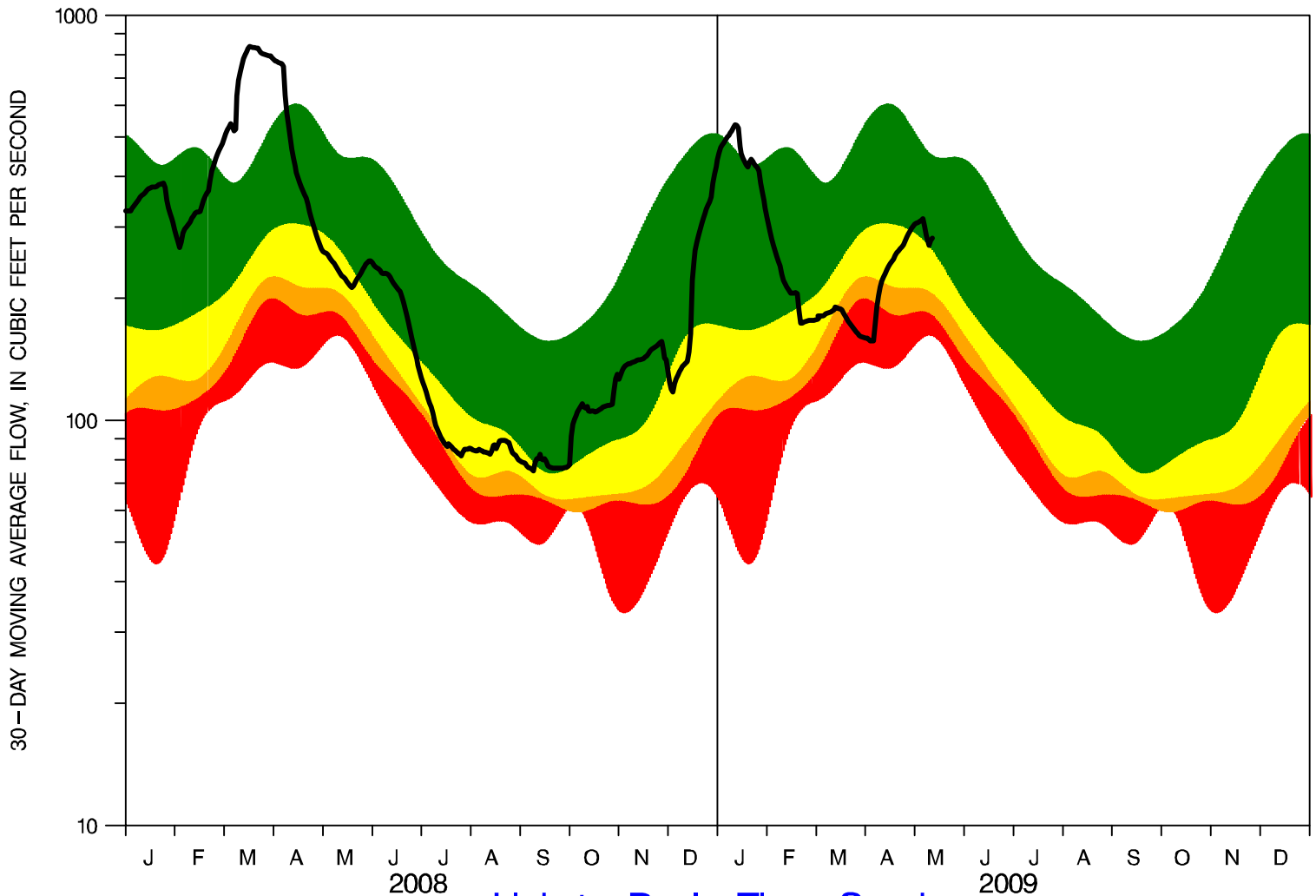
# STATION 01468500 SCHUYLKILL RIVER AT LANDINGVILLE, PA

US GEOLOGICAL SURVEY PROVISIONAL DATA – SUBJECT TO CHANGE

30-DAY MOVING AVERAGE DAILY FLOW

DRAINAGE AREA = 133 SQUARE MILES

BEGIN YEAR=1947 NUMBER OF YEARS=43.2 DATE OF PLOT=05/09/09



[Link to Real-Time Graph](#)

ALL DATA SHOWN ARE BASED ON 30-DAY MOVING AVERAGES; PERCENTILE BANDS HAVE BEEN SMOOTHED.

SOLID LINE = 30-DAY MOVING AVERAGE OF CURRENT DAILY VALUE FLOW

GREEN (TOP) BAND = 25- TO 75-PERCENTILE FLOWS (NORMAL CONDITIONS)

YELLOW BAND = 10- TO 25-PERCENTILE FLOWS (DROUGHT WATCH CONDITIONS)

ORANGE BAND = 5- TO 10-PERCENTILE FLOWS (DROUGHT WARNING CONDITIONS)

RED (BOTTOM) BAND = 0- TO 5-PERCENTILE FLOWS (DROUGHT EMERGENCY CONDITIONS)