

TARGET: Transportability Analysis Reports Generator

What Is TARGET?

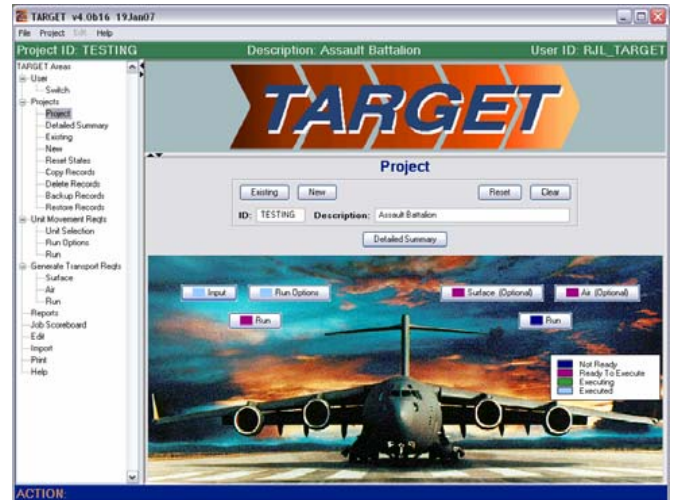
TARGET is a group of models and programs that provide the capability to detail unit movement requirements at the line item number (LIN) level of detail. The system uses two primary databases: the Tables of Organization and Equipment (TOE) and the Department of Army Equipment Characteristics (ECF) file. TARGET uses the Oracle database management system to merge the ECF with specified TOE units and create unit equipment tables. These tables are used to drive the other main subsystems of TARGET:

- **Vehicular Cargo (VEHCAR) Model:** unit cargo vehicle loading
- **Surface Transport Loading Data (STLD) Model:** container, highway vehicle, and railcar loading
- **Air Loading Model (ALM):** aircraft loading

What Does TARGET Do?

TARGET provides detailed cargo and transportation information for military unit movement requirements by merging ECF data with:

- TOE, notional units' required equipment,
- Modified TOE-specific units' authorized equipment, or
- Total Army Equipment Distribution Program programmatic budget file.



TARGET models the loading of organic cargo vehicles, containers, highway and rail assets, and aircraft to analyze:

- Deployability of alternative force structures,
- Changes in the Defense Transportation System, and
- Future weapons systems at the LIN level of detail.

What Output Can TARGET Generate?

TARGET can create dozens of report files, and exports specific results directly to other models (JFAST and PORTSIM).

Learn more about TARGET and other Argonne-developed models at:
<http://www.dis.anl.gov/>

For more information, contact:
Charles Van Groningen (vang@anl.gov) or (630) 252-5308
Decision and Information Sciences Division
Argonne National Laboratory
9700 S. Cass Avenue, Bldg. 900
Argonne, IL 60439, USA