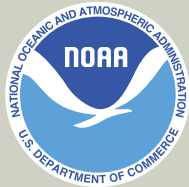




Monterey Bay & Channel Islands NMS Draft Management Plans & Advisory Council Review



Monterey Bay
National Marine Sanctuary
Advisory Council



August 5, 2005





Management Plan Review



An Update of the Sanctuary's Guiding Documents

The review process examines and potentially changes:

- **Generally, how the Sanctuary operates and is administered**
- **Specifically, what are the rules and regulations**
- **Exactly, where are the boundaries**

❖ **Congressional Requirement to periodically review plan**



Monterey Bay National Marine Sanctuary



- ❖ Designated: September 18, 1992
- ❖ Seaward Boundary: ~25 miles offshore
- ❖ Shoreward Boundary: Mean High Tide
- ❖ Shoreline Length: 276 Statute Miles
- ❖ Area: 5,322 square statute miles
- ❖ Deepest Point: 10,663 ft
- ❖ FY05 Budget: \$3.2 Million
- ❖ Staffing: 35 Staff & Contractors



Human Elements of MBNMS



- ❖ Five Coastal Counties
- ❖ 12 Coastal Cities
- ❖ Four Urban Centers
- ❖ Six Congressional Districts
- ❖ App. 9 million w/in 25 miles
- ❖ Multiple Users
 - ❖ Fishing
 - ❖ Recreation
 - ❖ Research
 - ❖ Military
 - ❖ Watersheds - 11 coastal watersheds, 7,500 sq. miles

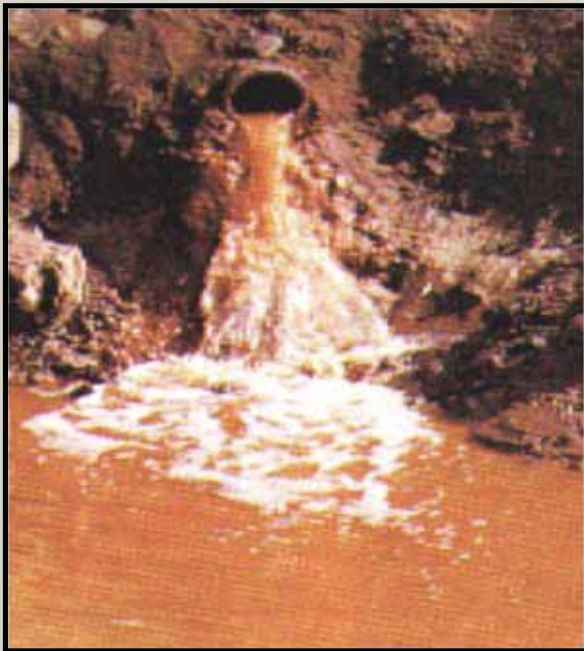




MBNMS's Regulated Activities



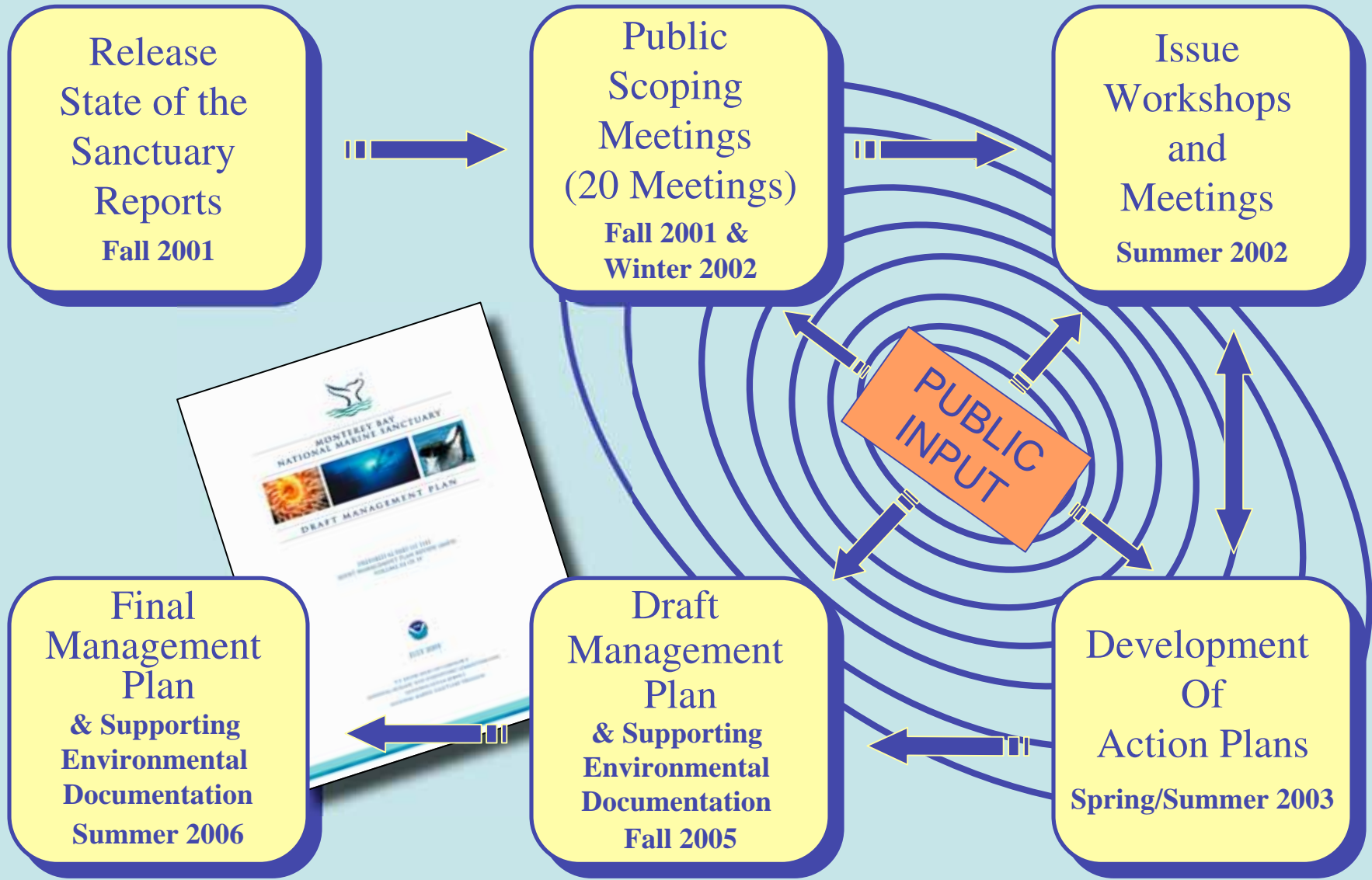
- ❖ Oil and gas exploration or production
- ❖ Discharging or depositing materials
- ❖ Alteration of the seabed
- ❖ Disturbing marine mammals, turtles, and birds



- ❖ Moving or injuring historical resources
- ❖ Aircraft altitude restrictions (below 1000 ft)
- ❖ Motorized personal watercraft restrictions
- ❖ Attracting white sharks



Management Plan Process





Monterey Bay NMS Action Plans



Coastal Development Action Plans

- ❖ Coastal Armoring
- ❖ Desalination
- ❖ Harbors and Dredge Disposal
- ❖ Submerged Cables

Ecosystem Protection Action Plans

- ❖ Bottom Trawling Effects to Benthic Habitats
- ❖ Big Sur Coastal Ecosystem
- ❖ Davidson Seamount
- ❖ Emerging Issues
- ❖ Introduced Species
- ❖ Special Marine Protected Areas
- ❖ SIMoN

Partnerships and Opportunities Action Plans

- ❖ Fishing Related Research & Education
- ❖ Interpretive Facilities
- ❖ Multicultural Outreach

Water Quality Action Plans

- ❖ Beach Closures and Contamination
- ❖ Cruise Ship Discharges
- ❖ Water Quality Protection Program

Wildlife Disturbance Action Plan

- ❖ Marine Mammal, Seabird and Turtles
- ❖ Motorized Personal Watercraft
- ❖ Tidepool Protection



MBNMS: Proposed Regulations



- ❖ **Dredge Disposal Site Codification**
- ❖ **Davidson Seamount - Comprehensive Protection**
- ❖ **Abandoned Vessels & Harmful Matter**
- ❖ **Introduced Species**
- ❖ **Cruise Ship Discharges**
- ❖ **Motorized Personal Watercraft Definition**





JMPR Schedule



Public Review and Comment:

Document Release

- **Four documents (3 plans & EIS)**
- **Scheduled for November 2005**

Public Comment & Hearings

60 day review

5 - 8 Public Comment Hearings

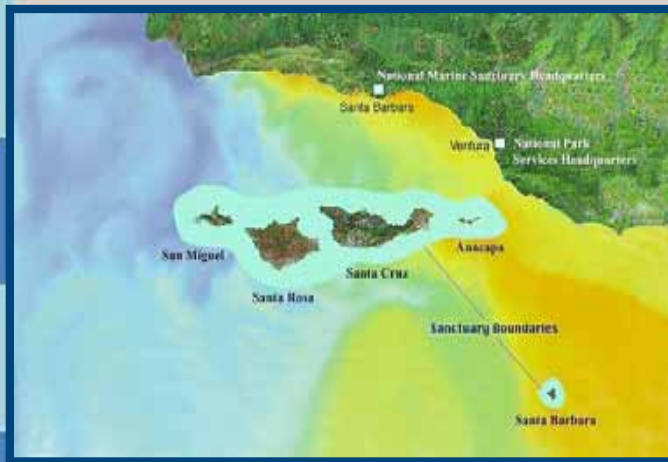
SAC Review

- **2 Staff Briefings for SAC approx. 10 days after release**
- **Discuss at Meeting in December ?**
- **Possible Action in February ?**

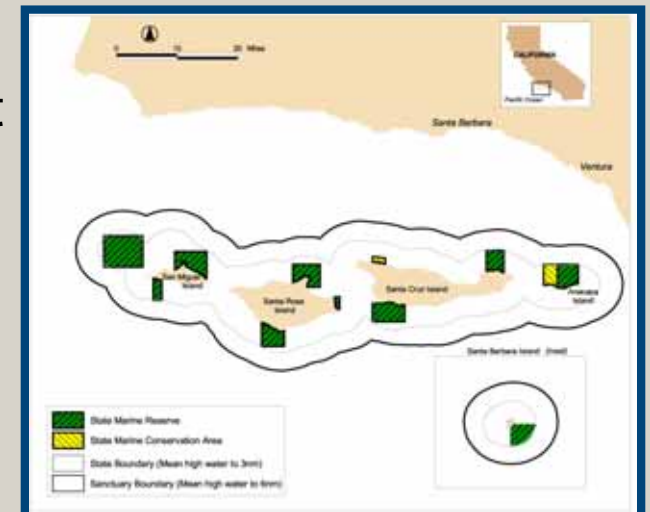




Channel Islands National Marine Sanctuary



- ❖ Designated: September 22, 1980
- ❖ Encircles 5 Islands and 2 offshore rocks
- ❖ Seaward Boundary: ~ 7 miles offshore (6nm)
- ❖ Shoreward Boundary: Mean High Water
- ❖ Area: ~ 1660 square statute miles
- ❖ Largest network of MPAs on west coast
- ❖ FY05 Budget: \$2.293 Million
- ❖ Staffing: 26 Staff & Contractors





Human Elements of CINMS



- ❖ Oldest human presence in N. America (13,000 years)
- ❖ Two Coastal Counties, population of over 1.1 million
- ❖ *43% population increase in So. California since 1980*
- ❖ Four Coastal Cities
- ❖ Two Congressional Districts (L. Capps & E. Gallegly)
- ❖ Multiple Users
 - ❖ Recreation (fishing, diving, wildlife viewing, kayaking, etc...)
 - ❖ Commercial (fishing, kelp harvest, oil and gas, shipping)
 - ❖ Department of Defense/Homeland Security
 - ❖ Research (physical, biological, socioeconomic, cultural, etc...)
 - ❖ Education
- ❖ Over 140 Shipwrecks and Aircraft Wrecks





CINMS's Regulated Activities



- ❖ Oil and gas exploration and production
- ❖ Discharging or depositing materials
- ❖ Alteration of the seabed
- ❖ Operation of vessels carrying cargo and servicing offshore installations within 1 NM of the Islands



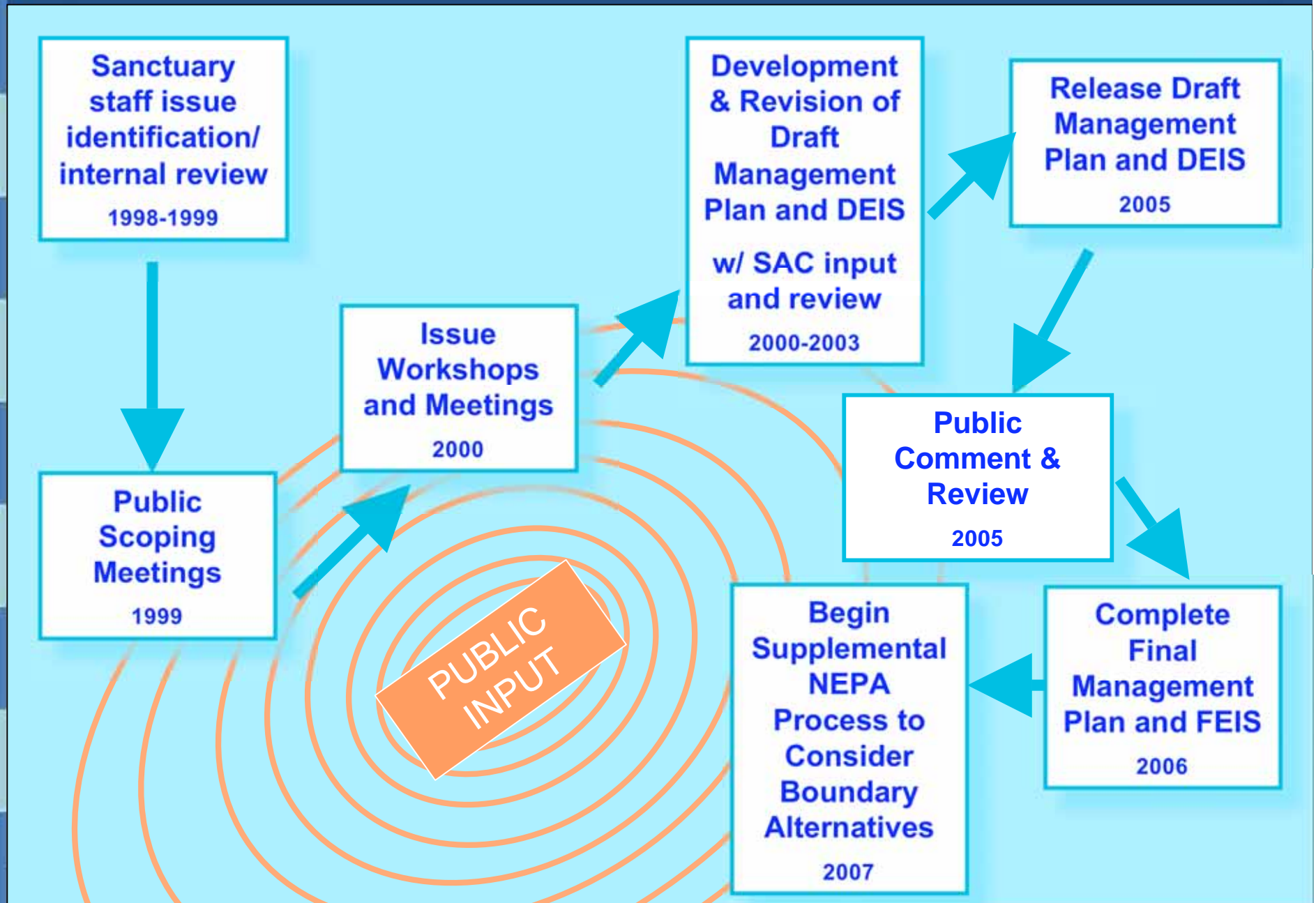
- ❖ Disturbing seabirds or marine mammals by flying aircraft at less than 1000 feet within 1 NM of the Islands

- ❖ Removing or damaging historical or cultural resources





CINMS's Management Plan Process

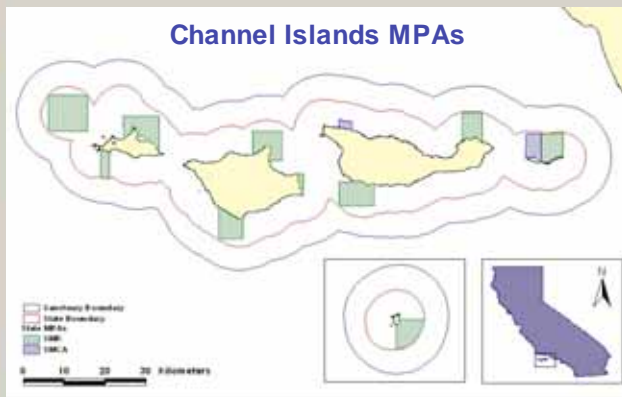
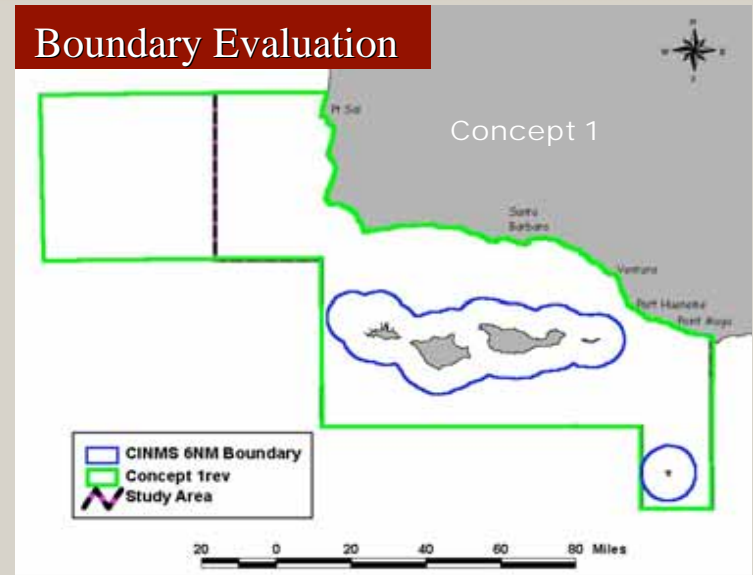




CINMS Action Plans



- ❖ Public Awareness and Understanding
- ❖ Conservation Science
- ❖ Boundary Evaluation
- ❖ Marine Zoning
- ❖ Water Quality
- ❖ Emergency Response and Enforcement
- ❖ Maritime Heritage Resources
- ❖ Emerging Issues (e.g., introduced species, LNG, aquaculture, noise)



- ❖ Operations
 - Sanctuary Advisory Council, other partnerships
 - facilities, vessels, aircraft, vehicles
 - administration, human resources, permitting
- ❖ Evaluation
 - performance measures



Proposed CINMS Regulatory Changes



- ❖ Minerals mining exploration and production
- ❖ Discharging or depositing
 - food wastes; non-fishing chumming; enter & injure
- ❖ Alteration of the seabed from 2 to 6 NM
- ❖ Abandoning structures, material or other matter
- ❖ Operation of vessels larger than 300 GRT within 1 NM of the Islands
- ❖ Take/possession of marine mammals, seabirds, sea turtles
- ❖ Tampering with signs
- ❖ Releasing or otherwise introducing an introduced species
- ❖ Operation of motorized personal water craft within waters of the Channel Islands National Park (parallel existing NPS ban)
- ❖ Clarification of & refinements to: discharge/deposit, permitting, cultural resource protection, Department of Defense activities





CINMS Management Plan Schedule



Public Review and Comment:

Document Release

- **Two-volumes: (I) Mgmt. plan & (II) DEIS**
- **Anticipated in September 2005**



Public Comment & Hearings

- **60 day review**
- **Two Sanctuary Advisory Council Meetings**
- **Two public comment hearings**

SAC Review

- **One afternoon/evening meeting to initiate public review**
- **One meeting to close SAC comment**



Discussion for Advisory Councils



- ❖ **How have Advisory Council Members been successful in outreach efforts to constituents?**
- ❖ **What approaches have Advisory Councils taken to provide advice to the Sanctuary Program or NOAA?**
- ❖ **How have Advisory Council members identified agenda items for meetings?**
- ❖ **How have the Advisory Councils been working to address priority issues identified in the management plans?**
- ❖ **Should MBNMS and CINMS Advisory Councils collaborate in addressing issues of shared concern? If so, which issues and how?**



NATIONAL MARINE
SANCTUARIES TM



JMPR Update: Davidson Seamount



Pacific Fishery Management Council Consultation

April Response:

- Support NMSP goals and objectives for protection;
- Protect Davidson Seamount via regulations under Magnuson-Stevens, designate Essential Fish Habitat and revise Groundfish Management Plan

(unanimous vote)

June Meeting:

- Voted to designate Davidson Seamount as Essential Fish Habitat and Habitat Area of Particular Concern
- Recommended portion of Davidson Seamount as “no bottom contact gear” closure with a buffer; portion as “no bottom trawling”

(unanimous vote) *Marine Sanctuaries • America's Ocean Treasures*



JMPR Update: Davidson Seamount



Pacific Fishery Management Council Consultation

NEXT STEPS:

1. JMPR moves forward with regulation under National Marine Sanctuaries Act
2. NOAA completes analysis of feasibility of regulation under Magnuson-Stevens Act (September or October)
3. NOAA decides appropriate regulatory pathway to protect Davidson Seamount (to be determined)