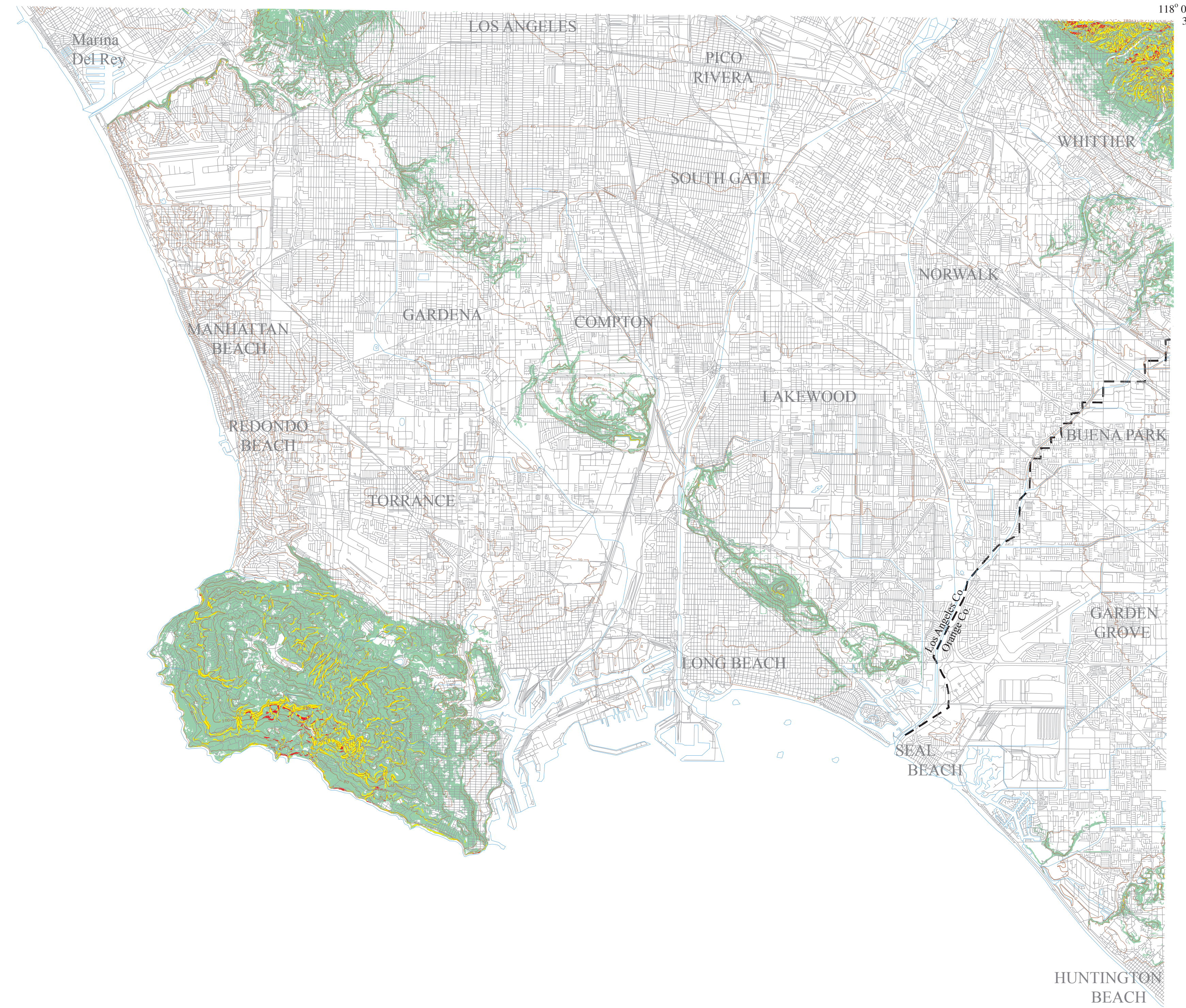


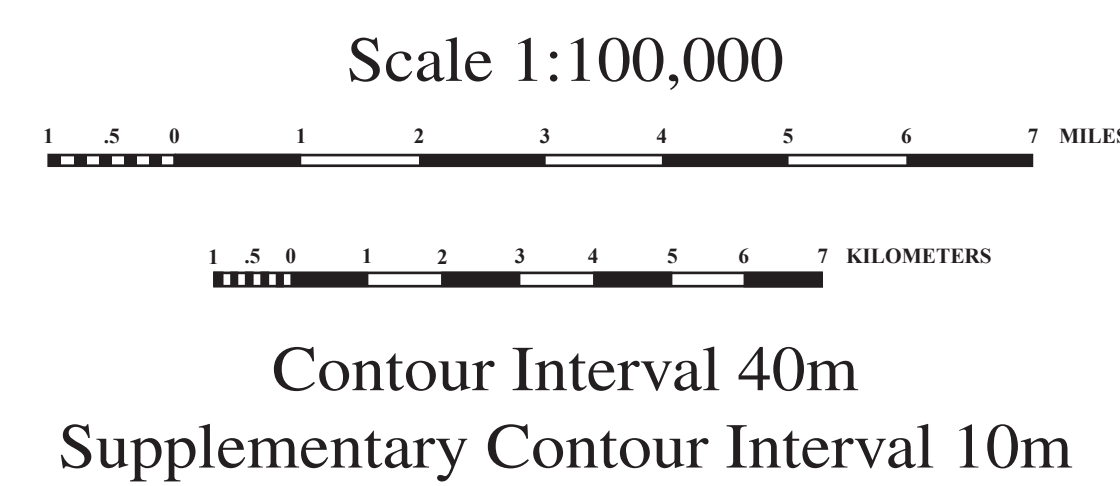
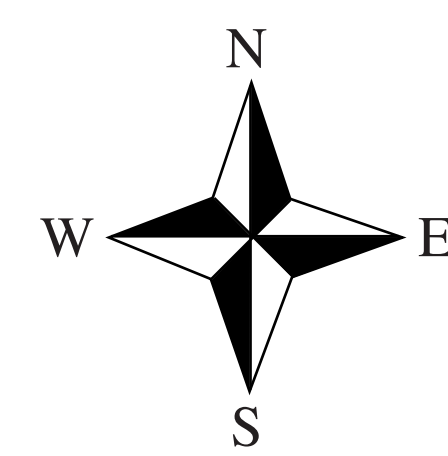
119° 00'
34° 00'

118° 00'
34° 00'



33° 30'
119° 00'

Base map digital layers (drainage, roads, and topographic contours) were prepared from publicly available digital line graph (DLG) data, Long Beach 1:100,000 metric quadrangle. Projection is UTM, zone 11.



Uncolored areas have zero soil-slip susceptibility values

33° 30'
118° 00'

Plate 4. Soil-Slip Susceptibility Map for the Long Beach 30' x 60' Quadrangle, Southern California

Preliminary Soil-Slip Susceptibility Maps, Southwestern California

By

D.M. Morton¹, R.M. Alvarez¹ and R.H. Campbell¹

Digital preparation by

K.R. Bovard¹, D.T. Brown², K.M. Corriea¹ and J.N. Lesser³

2003

¹ Southern California Areal Mapping Project (SCAMP)
U.S. Geological Survey
Department of Earth Sciences
University of California Riverside
Riverside, CA 92521

² Department of Earth Sciences
University of California Riverside
Riverside, CA 92521

³ U.S. Forest Service
Department of Earth Sciences
University of California Riverside
Riverside, CA 92521

This report is preliminary and has not been reviewed for conformity with U.S. Geological Survey editorial standards or with the North American Stratigraphic Code. Any use of trade, firm, or product names in this publication is for descriptive purposes only and does not imply endorsement by the U.S. Government.

This map was printed on an electronic plotter directly from digital files. Dimensional calibration may vary between electronic plotters and between X and Y directions on the same plotter, and paper may change size due to atmospheric conditions; therefore, scale and proportions may not be true on plots of this map.

For sale by U.S. Geological Survey, Information Services, Box 25286, Federal Center, Denver, CO 80225, 1-888-ASK-USGS

Digital files available on World Wide Web at <http://geopubs.wr.usgs.gov/open-file/of03-17>