

Utah, 2005

Primary and secondary syphilis

- CASES: Utah reported 10 cases in 2005.
- RATES: Utah ranked 46 among 50 states + DC + 3 territories: 0.4 cases per 100,000 population compared to the U.S. rate of 3.0 cases per 100,000 population.

Male-female rates of primary and secondary syphilis

- In Utah, the rate among males was 0.8 per 100,000 population compared to the U.S. male rate of 5.1 per 100,000.
- The rate among females was 0.1 per 100,000 compared to the U.S. female rate of 0.9 per 100,000.

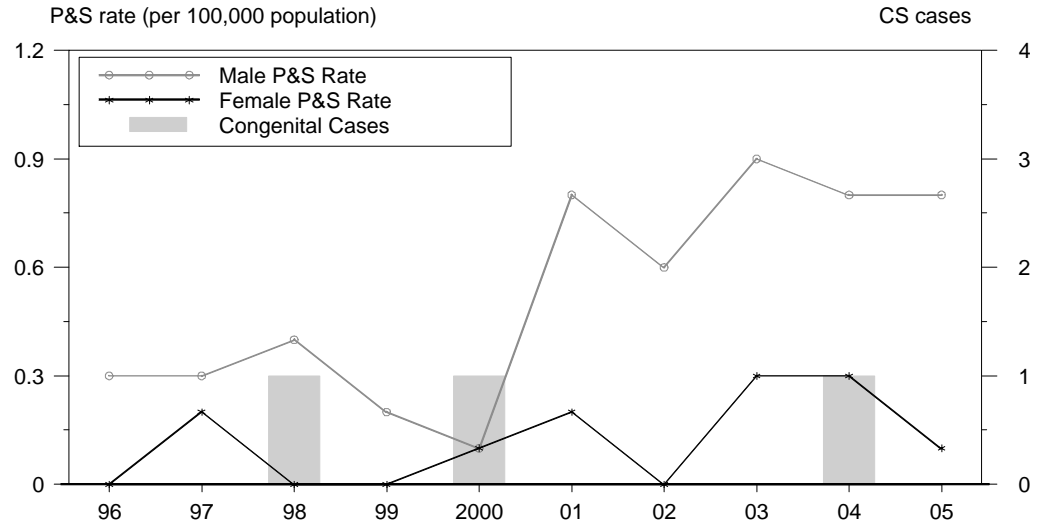
Racial disparities of primary and secondary syphilis

In Utah, the race/ethnicity adjusted rates per 100,000 population were 0.4 among whites, 0.0 among blacks, 0.4 among Hispanics, 0.0 among Asian/Pacific Islanders, and 0.0 among American Indians/Alaska Natives.

Congenital syphilis

- CASES: Utah reported 0 cases in 2005.
- RATES: Utah had a rate of 0.0 cases per 100,000 live births compared to the U.S. rate of 8.0 cases per 100,000.

Syphilis: P&S Rates and Congenital Cases, Utah, 1996-2005



Total P&S Syphilis Rates by County, Utah, 2005

