

# Connecticut, 2005

## Primary and secondary syphilis

- **CASES:** Connecticut reported 58 cases in 2005.
- **RATES:** Connecticut ranked 25 among 50 states + DC + 3 territories: 1.7 cases per 100,000 population compared to the U.S. rate of 3.0 cases per 100,000 population.

## Male-female rates of primary and secondary syphilis

- In Connecticut, the rate among males was 3.3 per 100,000 population compared to the U.S. male rate of 5.1 per 100,000.
- The rate among females was 0.1 per 100,000 compared to the U.S. female rate of 0.9 per 100,000.

## Racial disparities of primary and secondary syphilis

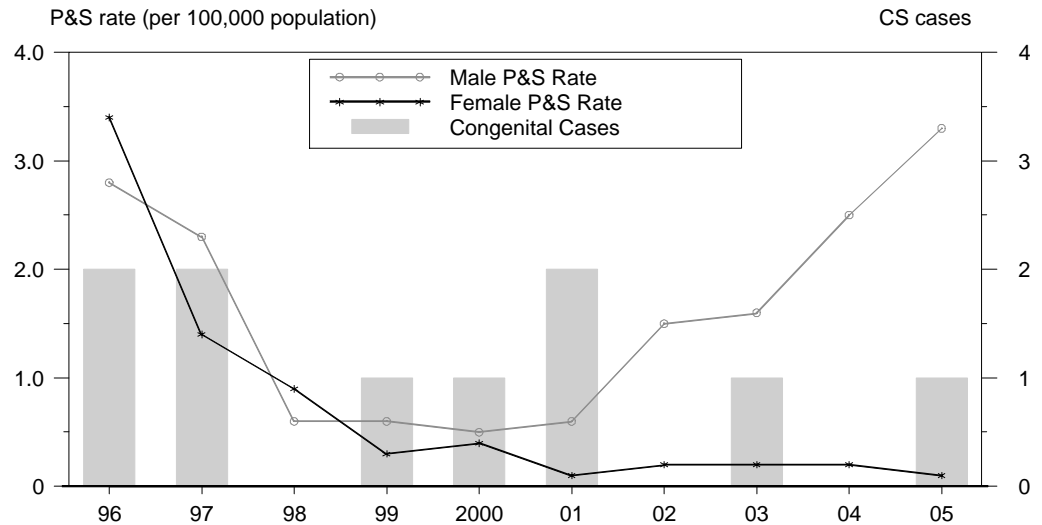
In Connecticut, the race/ethnicity adjusted rates per 100,000 population were 0.9 among whites, 7.5 among blacks, 2.2 among Hispanics, 0.9 among Asian/Pacific Islanders, and 0.0 among American Indians/Alaska Natives.

- The rate among blacks was 8.3 times that of whites.
- The rate among Hispanics was 2.4 times that of whites.

## Congenital syphilis

- **CASES:** Connecticut reported 1 case in 2005.
- **RATES:** Connecticut ranked 24 among 28 states + 2 territories reporting at least one congenital syphilis case: 2.3 cases per 100,000 live births compared to the U.S. rate of 8.0 cases per 100,000.

## Syphilis: P&S Rates and Congenital Cases, Connecticut, 1996-2005



## Total P&S Syphilis Rates by County, Connecticut, 2005

