

# American Community Survey

## 2003 Geography Notes

## Table of Contents

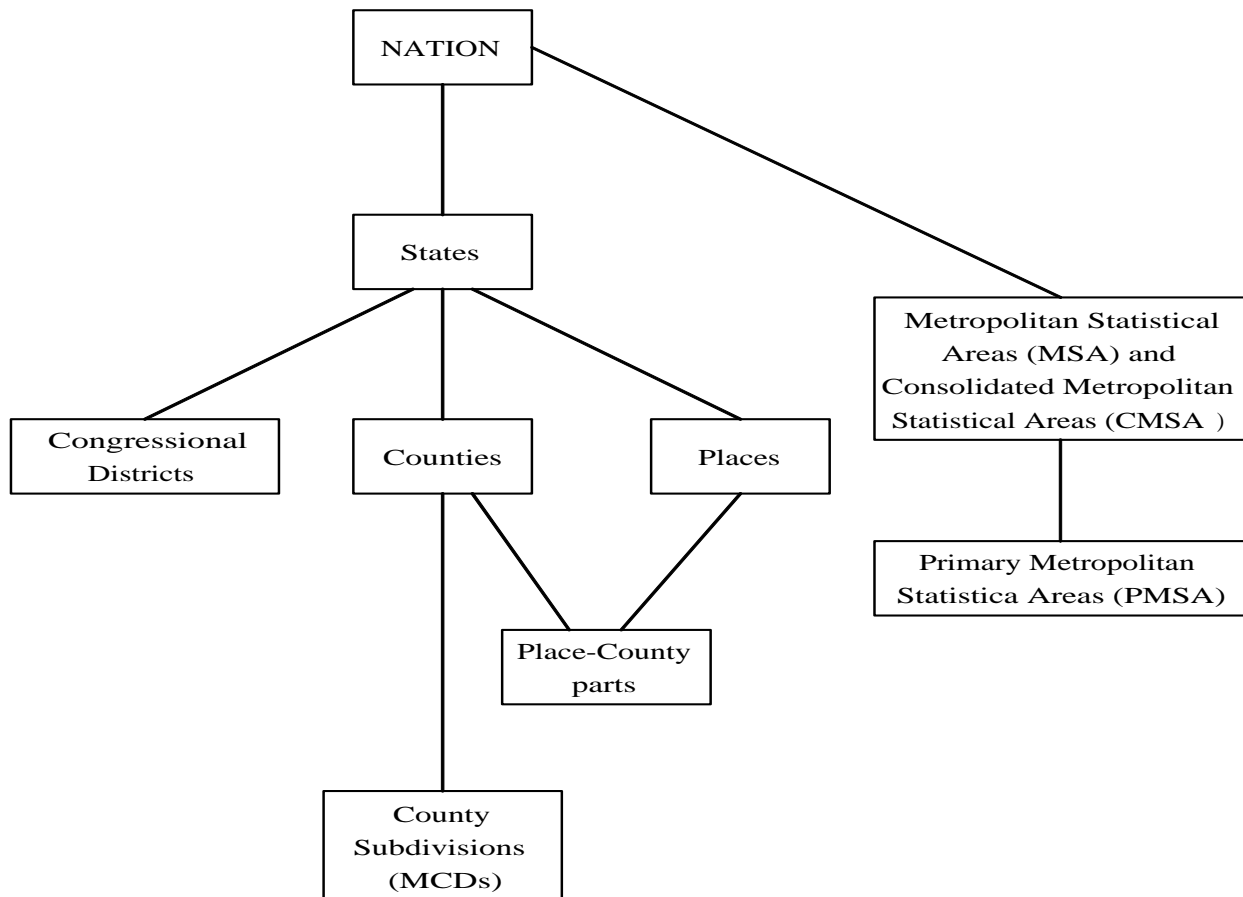
Overlapping Geographic Summary Levels.....	3
User Notes.....	4
Metropolitan Statistical Areas .....	6
Geographic Areas for Which Data Are Available .....	23
Equivalent Geographies .....	60
Glossary of Geographic Terms .....	68

## The American Community Survey

The 2003 American Community Survey data includes single-year estimates for areas of 250,000 or more household population, and Change Profiles for all states, and areas with a household population of 1 million or more.<sup>1,2</sup> The list of areas to publish was based on the Census Bureau's July 1, 2003 Population Estimates.

Data are reported for common political divisions, such as states, counties, places and metropolitan statistical areas.<sup>3</sup> This document contains an abbreviated explanation of the Census Bureau's geographic hierarchy, and some of the more common terms, to get you started using data from the American Community Surveys. The geographic base for these data is January 1, 2003.

Not all levels of geography are represented in the American Community Survey data products. The following diagram shows the portions of the Census Bureau's geographic hierarchy that are included in the 2003 American Community Survey data products.



Data are available for the following geographic summary levels:

Summary Level		Number of areas published				Comments
		2000	2001	2002	2003	
001	ACS Test Site	21	21	21	21	Most sites that are equivalent to a single county; others are two or three adjacent counties
010	Nation	1	1	1	1	
040	State	51	51	51	51	Includes the District of Columbia
050	County	224	228	239	241	Marion County, Florida is the only county with a household population greater than 250,000 for which we are unable to publish data
060	County Subdivision (MCD)	29	30	14	14	
155	Place-County	68	70	74	74	
160	Place	80	80	87	88	
380	Metropolitan Statistical Area (MSA) / Consolidated Metropolitan Statistical Area (CMSA)	113	113	115	116	
385	CMSA / Primary Metropolitan Statistical Area (PMSA)	46	48	49	50	
500	Congressional District <sup>4</sup>	211	211	205	206	2000 and 2001 data were published for the 106 <sup>th</sup> Congressional Districts; 2002 and 2003 data are published for the 108 <sup>th</sup> Congressional Districts

### Overlapping Geographic Summary Levels

Some geographies may appear under multiple summary levels. For example, Bronx, New York is shown under the following summary levels:

- |                                |                                 |
|--------------------------------|---------------------------------|
| 050 - County                   | Bronx County                    |
| 060 - County subdivision (MCD) | Bronx borough                   |
| 155 - Place-County             | New York city, Bronx County pt. |

## User Notes

Geographic areas published by the American Community Survey (ACS) can be divided into ACS Test Sites (see note below) and the remaining ACS areas (see note below). Thresholds for publishing a geographic area are:

	Single Year Estimates	Change Estimates
Test Sites	65,000	250,000
Remaining Areas	250,000	1,000,000

1. Data collected in the American Community Survey Test Sites were sampled at a higher rate. Single year estimates are produced for geographic areas with a household population of 65,000 or more. Change estimates are produced for geographic areas with a household population of 250,000 or more.

### 1999-2003 American Community Survey Test Sites

Jefferson County, AR	Douglas County, NE
Pima County, AZ	Otero County, NM*
San Francisco County, CA	Bronx County, NY
Tulare County, CA	Rockland County, NY
Upson County, GA*	Franklin County, OH
Broward County, IA	Multnomah County, OR
Black Hawk County, LA	Fulton County, PA*
Lake County, IL	Schuylkill County, PA
Miami County, IN*	Sevier County, TN
DeSoto Parish, LA*	Fort Bend and Harris Counties, TX
Hampden County, MA	Starr and Zapata Counties, TX
Calvert County, MD	Petersburg, VA*
Iron, Reynolds, and Washington Counties, MO*	Yakima County, WA
Madison County, MS	Oneida and Vilas Counties, WI*
Flathead and Lake Counties, MT	Ohio County, WV

\*\* Test Sites with household populations of less than 65,000

2. Data for the remaining American Community Survey areas are available for geographies that are *wholly contained within self-representing Primary Sampling Units*. PSU is short for primary sampling unit. It is a county or a group of counties that are treated as a single sample unit. Each PSU falls within the boundary of a state.

The American Community Survey uses a two-stage sample of housing units for those areas. The first stage of sampling divides the state into PSUs and selects a sample of these PSUs. Then, the final (second stage) sample of housing units is taken from the chosen PSUs. Certain PSUs (roughly, those with an estimated population of 250,000 or more) are designated as "self-representing" (SR). The remaining PSUs are referred to as "non-self representing" (NSR). The NSR PSUs are grouped into clusters and only two are chosen to represent all of the PSUs in the cluster. In the final sample, housing units are taken from all the SR PSUs and only the two selected NSR PSUs.

For more information on PSU definition and selection for sample, see the "Accuracy of the data" section on the Census Supplementary Survey website – <http://www.census.gov/acs/www/UseData/Accuracy/Accuracy1.htm>

3. Metropolitan areas are defined as of June 30, 1999.
4. 2000 and 2001 data were published for the 106<sup>th</sup> Congressional Districts; 2002 and 2003 data are published for the 108<sup>th</sup> Congressional Districts.
5. Ranking Products are created and released for entities within the following geographic summary levels with a population of 250,000 or more:

040	State
050	County
160	Place

The estimate for the United States is included as a reference point in all state rank products. These products were created for 233 of the 241 counties and 68 of the 88 places for 2003, except when a threshold was applied to a particular characteristic of a ranking product.

6. Thresholds have been set to ensure that the estimates are statistically reliable. Listed below are the threshold criterion which will determine which estimates will be released for each of the geographic areas with the population exceeding 65,000 for the ACS Sites and 250,000 for the remaining ACS areas. Both of the criterion must be met in order to be released to the public:
  - The weighted table universe count must be greater than or equal to 500 for the ACS Sites or 2500 for the remaining ACS geographic areas.
  - The un-weighted count of the records which satisfy the table universe must be at least double the number of cells in the table, excluding total and sub-total cells, i.e. the average cell size must be at least two.

## Metropolitan Statistical Areas

The table below shows all current Metropolitan Statistical Areas (MSA), Consolidated Metropolitan Statistical Areas (CMSA), and Primary Metropolitan Statistical Areas (PMSA) in the United States. The shaded rows indicate metropolitan areas which cannot be published from the 2003 American Community Survey.

MSA-CMSA code	PMSA code	MSA, CMSA, or PMSA Name	2000	2001	2002	2003	2003 Change Profiles 2000-2003
0040		Abilene, TX MSA					
0120		Albany, GA MSA					
0160		Albany--Schenectady--Troy, NY MSA	Yes	Yes	Yes	Yes	
0200		Albuquerque, NM MSA					
0220		Alexandria, LA MSA					
0240		Allentown--Bethlehem--Easton, PA MSA	Yes	Yes	Yes	Yes	
0280		Altoona, PA MSA					
0320		Amarillo, TX MSA					
0380		Anchorage, AK MSA	Yes	Yes	Yes	Yes	
0450		Anniston, AL MSA					
0460		Appleton--Oshkosh--Neenah, WI MSA	Yes	Yes	Yes	Yes	
0480		Asheville, NC MSA					
0500		Athens, GA MSA					
0520		Atlanta, GA MSA	Yes	Yes	Yes	Yes	Yes
0580		Auburn--Opelika, AL MSA					
0600		Augusta--Aiken, GA--SC MSA	Yes	Yes	Yes	Yes	
0640		Austin--San Marcos, TX MSA	Yes	Yes	Yes	Yes	Yes
0680		Bakersfield, CA MSA	Yes	Yes		Yes	

MSA-CMSA code	PMSA code	MSA, CMSA, or PMSA Name	2000	2001	2002	2003	2003 Change Profiles 2000-2003
0730		Bangor, ME MSA					
0740		Barnstable--Yarmouth, MA MSA					
0760		Baton Rouge, LA MSA	Yes	Yes	Yes	Yes	
0840		Beaumont--Port Arthur, TX MSA	Yes	Yes	Yes	Yes	
0860		Bellingham, WA MSA					
0870		Benton Harbor, MI MSA					
0880		Billings, MT MSA					
0920		Biloxi--Gulfport--Pascagoula, MS MSA	Yes	Yes		Yes	
0960		Binghamton, NY MSA			Yes	Yes	
1000		Birmingham, AL MSA	Yes	Yes	Yes	Yes	
1010		Bismarck, ND MSA					
1020		Bloomington, IN MSA					
1040		Bloomington--Normal, IL MSA					
1080		Boise City, ID MSA	Yes	Yes	Yes	Yes	
1122		Boston--Worcester--Lawrence, MA--NH--ME--CT CMSA	Yes	Yes	Yes	Yes	Yes
1122	1120	Boston, MA--NH PMSA	Yes	Yes	Yes	Yes	Yes
1122	1200	Brockton, MA PMSA		Yes	Yes	Yes	
1122	2600	Fitchburg--Leominster, MA PMSA					
1122	4160	Lawrence, MA--NH PMSA	Yes	Yes	Yes	Yes	
1122	4560	Lowell, MA--NH PMSA	Yes	Yes	Yes	Yes	
1122	4760	Manchester, NH PMSA					
1122	5350	Nashua, NH PMSA					
1122	5400	New Bedford, MA PMSA					



MSA-CMSA code	PMSA code	MSA, CMSA, or PMSA Name	2000	2001	2002	2003	2003 Change Profiles 2000-2003
1122	6450	Portsmouth--Rochester, NH--ME PMSA				Yes	
1122	9240	Worcester, MA--CT PMSA	Yes	Yes	Yes	Yes	
1240		Brownsville--Harlingen--San Benito, TX MSA	Yes	Yes	Yes	Yes	
1260		Bryan--College Station, TX MSA					
1280		Buffalo--Niagara Falls, NY MSA	Yes	Yes	Yes	Yes	Yes
1305		Burlington, VT MSA					
1320		Canton--Massillon, OH MSA	Yes	Yes	Yes	Yes	
1350		Casper, WY MSA					
1360		Cedar Rapids, IA MSA					
1400		Champaign--Urbana, IL MSA					
1440		Charleston--North Charleston, SC MSA	Yes	Yes	Yes	Yes	
1480		Charleston, WV MSA					
1520		Charlotte--Gastonia--Rock Hill, NC--SC MSA					
1540		Charlottesville, VA MSA					
1560		Chattanooga, TN--GA MSA					
1580		Cheyenne, WY MSA					
1602		Chicago--Gary--Kenosha, IL--IN--WI CMSA					
1602	1600	Chicago, IL PMSA	Yes	Yes	Yes	Yes	Yes
1602	2960	Gary, IN PMSA					
1602	3740	Kankakee, IL PMSA					
1602	3800	Kenosha, WI PMSA					
1620		Chico--Paradise, CA MSA					
1642		Cincinnati--Hamilton, OH--KY--IN CMSA					

MSA-CMSA code	PMSA code	MSA, CMSA, or PMSA Name	2000	2001	2002	2003	2003 Change Profiles 2000-2003
1642	1640	Cincinnati, OH--KY--IN PMSA					
1642	3200	Hamilton--Middletown, OH PMSA	Yes	Yes	Yes	Yes	
1660		Clarksville--Hopkinsville, TN--KY MSA					
1692		Cleveland--Akron, OH CMSA	Yes	Yes	Yes	Yes	Yes
1692	0080	Akron, OH PMSA	Yes	Yes	Yes	Yes	
1692	1680	Cleveland--Lorain--Elyria, OH PMSA	Yes	Yes	Yes	Yes	Yes
1720		Colorado Springs, CO MSA	Yes	Yes	Yes	Yes	
1740		Columbia, MO MSA					
1760		Columbia, SC MSA	Yes	Yes	Yes	Yes	
1800		Columbus, GA--AL MSA					
1840		Columbus, OH MSA					
1880		Corpus Christi, TX MSA	Yes	Yes	Yes	Yes	
1890		Corvallis, OR MSA					
1900		Cumberland, MD--WV MSA					
1922		Dallas--Fort Worth, TX CMSA	Yes	Yes	Yes	Yes	Yes
1922	1920	Dallas, TX PMSA	Yes	Yes	Yes	Yes	Yes
1922	2800	Fort Worth--Arlington, TX PMSA	Yes	Yes	Yes	Yes	Yes
1950		Danville, VA MSA					
1960		Davenport--Moline--Rock Island, IA--IL MSA	Yes	Yes	Yes	Yes	
2000		Dayton--Springfield, OH MSA	Yes	Yes	Yes	Yes	
2020		Daytona Beach, FL MSA	Yes	Yes	Yes	Yes	
2030		Decatur, AL MSA					
2040		Decatur, IL MSA					

MSA-CMSA code	PMSA code	MSA, CMSA, or PMSA Name	2000	2001	2002	2003	2003 Change Profiles 2000-2003
2082		Denver--Boulder--Greeley, CO CMSA					
2082	1125	Boulder--Longmont, CO PMSA	Yes	Yes	Yes	Yes	
2082	2080	Denver, CO PMSA	Yes	Yes	Yes	Yes	Yes
2082	3060	Greeley, CO PMSA					
2120		Des Moines, IA MSA	Yes	Yes	Yes	Yes	
2162		Detroit--Ann Arbor--Flint, MI CMSA	Yes	Yes	Yes	Yes	Yes
2162	0440	Ann Arbor, MI PMSA	Yes	Yes	Yes	Yes	
2162	2160	Detroit, MI PMSA	Yes	Yes	Yes	Yes	Yes
2162	2640	Flint, MI PMSA	Yes	Yes	Yes	Yes	
2180		Dothan, AL MSA					
2190		Dover, DE MSA					
2200		Dubuque, IA MSA					
2240		Duluth--Superior, MN--WI MSA					
2290		Eau Claire, WI MSA					
2320		El Paso, TX MSA	Yes	Yes	Yes	Yes	
2330		Elkhart--Goshen, IN MSA					
2335		Elmira, NY MSA					
2340		Enid, OK MSA					
2360		Erie, PA MSA	Yes	Yes	Yes	Yes	
2400		Eugene--Springfield, OR MSA	Yes	Yes	Yes	Yes	
2440		Evansville--Henderson, IN--KY MSA					
2520		Fargo--Moorhead, ND--MN MSA					
2560		Fayetteville, NC MSA	Yes	Yes	Yes	Yes	

MSA-CMSA code	PMSA code	MSA, CMSA, or PMSA Name	2000	2001	2002	2003	2003 Change Profiles 2000-2003
2580		Fayetteville--Springdale--Rogers, AR MSA	Yes	Yes	Yes	Yes	
2620		Flagstaff, AZ--UT MSA					
2650		Florence, AL MSA					
2655		Florence, SC MSA					
2670		Fort Collins--Loveland, CO MSA					
2700		Fort Myers--Cape Coral, FL MSA	Yes	Yes	Yes	Yes	
2710		Fort Pierce--Port St. Lucie, FL MSA	Yes	Yes	Yes	Yes	
2720		Fort Smith, AR--OK MSA					
2750		Fort Walton Beach, FL MSA					
2760		Fort Wayne, IN MSA	Yes	Yes	Yes	Yes	
2840		Fresno, CA MSA	Yes	Yes	Yes	Yes	
2880		Gadsden, AL MSA					
2900		Gainesville, FL MSA					
2975		Glens Falls, NY MSA					
2980		Goldsboro, NC MSA					
2985		Grand Forks, ND--MN MSA					
2995		Grand Junction, CO MSA					
3000		Grand Rapids--Muskegon--Holland, MI MSA	Yes	Yes	Yes	Yes	Yes
3040		Great Falls, MT MSA					
3080		Green Bay, WI MSA					
3120		Greensboro--Winston-Salem--High Point, NC MSA	Yes	Yes	Yes	Yes	Yes
3150		Greenville, NC MSA					
3160		Greenville--Spartanburg--Anderson, SC MSA	Yes	Yes	Yes	Yes	

MSA-CMSA code	PMSA code	MSA, CMSA, or PMSA Name	2000	2001	2002	2003	2003 Change Profiles 2000-2003
3240		Harrisburg--Lebanon--Carlisle, PA MSA	Yes	Yes	Yes	Yes	
3280		Hartford, CT MSA	Yes	Yes	Yes	Yes	
3285		Hattiesburg, MS MSA					
3290		Hickory--Morganton--Lenoir, NC MSA	Yes	Yes	Yes	Yes	
3320		Honolulu, HI MSA	Yes	Yes	Yes	Yes	
3350		Houma, LA MSA					
3362		Houston--Galveston--Brazoria, TX CMSA					
3362	1145	Brazoria, TX PMSA					
3362	2920	Galveston--Texas City, TX PMSA		Yes	Yes	Yes	
3362	3360	Houston, TX PMSA	Yes	Yes	Yes	Yes	Yes
3400		Huntington--Ashland, WV--KY--OH MSA					
3440		Huntsville, AL MSA	Yes	Yes	Yes	Yes	
3480		Indianapolis, IN MSA	Yes	Yes	Yes	Yes	Yes
3500		Iowa City, IA MSA					
3520		Jackson, MI MSA					
3560		Jackson, MS MSA	Yes	Yes	Yes	Yes	
3580		Jackson, TN MSA					
3600		Jacksonville, FL MSA	Yes	Yes	Yes	Yes	Yes
3605		Jacksonville, NC MSA					
3610		Jamestown, NY MSA					
3620		Janesville--Beloit, WI MSA					
3660		Johnson City--Kingsport--Bristol, TN--VA MSA	Yes	Yes	Yes	Yes	
3680		Johnstown, PA MSA					

MSA-CMSA code	PMSA code	MSA, CMSA, or PMSA Name	2000	2001	2002	2003	2003 Change Profiles 2000-2003
3700		Jonesboro, AR MSA					
3710		Joplin, MO MSA					
3720		Kalamazoo--Battle Creek, MI MSA	Yes	Yes	Yes	Yes	
3760		Kansas City, MO--KS MSA	Yes	Yes	Yes	Yes	Yes
3810		Killeen--Temple, TX MSA	Yes	Yes	Yes	Yes	
3840		Knoxville, TN MSA	Yes	Yes	Yes	Yes	
3850		Kokomo, IN MSA					
3870		La Crosse, WI--MN MSA					
3880		Lafayette, LA MSA	Yes	Yes	Yes	Yes	
3920		Lafayette, IN MSA					
3960		Lake Charles, LA MSA					
3980		Lakeland--Winter Haven, FL MSA	Yes	Yes	Yes	Yes	
4000		Lancaster, PA MSA	Yes	Yes	Yes	Yes	
4040		Lansing--East Lansing, MI MSA	Yes	Yes	Yes	Yes	
4080		Laredo, TX MSA					
4100		Las Cruces, NM MSA					
4120		Las Vegas, NV--AZ MSA					
4150		Lawrence, KS MSA					
4200		Lawton, OK MSA					
4240		Lewiston--Auburn, ME MSA					
4280		Lexington, KY MSA	Yes	Yes	Yes	Yes	
4320		Lima, OH MSA					
4360		Lincoln, NE MSA			Yes	Yes	

MSA-CMSA code	PMSA code	MSA, CMSA, or PMSA Name	2000	2001	2002	2003	2003 Change Profiles 2000-2003
4400		Little Rock--North Little Rock, AR MSA	Yes	Yes	Yes	Yes	
4420		Longview--Marshall, TX MSA					
4472		Los Angeles--Riverside--Orange County, CA CMSA	Yes	Yes	Yes	Yes	Yes
4472	4480	Los Angeles--Long Beach, CA PMSA	Yes	Yes	Yes	Yes	Yes
4472	5945	Orange County, CA PMSA	Yes	Yes	Yes	Yes	Yes
4472	6780	Riverside--San Bernardino, CA PMSA	Yes	Yes	Yes	Yes	Yes
4472	8735	Ventura, CA PMSA	Yes	Yes	Yes	Yes	
4520		Louisville, KY--IN MSA					
4600		Lubbock, TX MSA				Yes	
4640		Lynchburg, VA MSA					
4680		Macon, GA MSA	Yes	Yes	Yes	Yes	
4720		Madison, WI MSA	Yes	Yes	Yes	Yes	
4800		Mansfield, OH MSA					
4880		McAllen--Edinburg--Mission, TX MSA	Yes	Yes	Yes	Yes	
4890		Medford--Ashland, OR MSA					
4900		Melbourne--Titusville--Palm Bay, FL MSA	Yes	Yes	Yes	Yes	
4920		Memphis, TN--AR--MS MSA					
4940		Merced, CA MSA					
4992		Miami--Fort Lauderdale, FL CMSA	Yes	Yes	Yes	Yes	Yes
4992	2680	Fort Lauderdale, FL PMSA	Yes	Yes	Yes	Yes	Yes
4992	5000	Miami, FL PMSA	Yes	Yes	Yes	Yes	Yes
5082	5080	Milwaukee--Waukesha, WI PMSA	Yes	Yes	Yes	Yes	Yes
5082	6600	Racine, WI PMSA					

MSA-CMSA code	PMSA code	MSA, CMSA, or PMSA Name	2000	2001	2002	2003	2003 Change Profiles 2000-2003
5120		Minneapolis--St. Paul, MN--WI MSA					
5140		Missoula, MT MSA					
5160		Mobile, AL MSA	Yes	Yes	Yes	Yes	
5170		Modesto, CA MSA	Yes	Yes	Yes	Yes	
5200		Monroe, LA MSA					
5240		Montgomery, AL MSA	Yes	Yes	Yes	Yes	
5280		Muncie, IN MSA					
5330		Myrtle Beach, SC MSA					
5345		Naples, FL MSA					
5360		Nashville, TN MSA	Yes	Yes	Yes	Yes	Yes
5520		New London--Norwich, CT--RI MSA	Yes	Yes			
5560		New Orleans, LA MSA	Yes	Yes	Yes	Yes	Yes
5602		New York--Northern New Jersey--Long Island, NY--NJ--CT--PA CMSA					
5602	0875	Bergen--Passaic, NJ PMSA	Yes	Yes	Yes	Yes	Yes
5602	1160	Bridgeport, CT PMSA	Yes	Yes	Yes	Yes	
5602	1930	Danbury, CT PMSA					
5602	2281	Dutchess County, NY PMSA	Yes	Yes	Yes	Yes	
5602	3640	Jersey City, NJ PMSA	Yes	Yes	Yes	Yes	
5602	5015	Middlesex--Somerset--Hunterdon, NJ PMSA	Yes	Yes	Yes	Yes	Yes
5602	5190	Monmouth--Ocean, NJ PMSA	Yes	Yes	Yes	Yes	Yes
5602	5380	Nassau--Suffolk, NY PMSA	Yes	Yes	Yes	Yes	Yes
5602	5480	New Haven--Meriden, CT PMSA	Yes	Yes	Yes	Yes	



MSA-CMSA code	PMSA code	MSA, CMSA, or PMSA Name	2000	2001	2002	2003	2003 Change Profiles 2000-2003
5602	5600	New York, NY PMSA	Yes	Yes	Yes	Yes	Yes
5602	5640	Newark, NJ PMSA	Yes	Yes	Yes	Yes	Yes
5602	5660	Newburgh, NY--PA PMSA					
5602	8040	Stamford--Norwalk, CT PMSA	Yes	Yes	Yes	Yes	
5602	8480	Trenton, NJ PMSA	Yes	Yes	Yes	Yes	
5602	8880	Waterbury, CT PMSA					
5720		Norfolk--Virginia Beach--Newport News, VA--NC MSA					
5790		Ocala, FL MSA					
5800		Odessa--Midland, TX MSA					
5880		Oklahoma City, OK MSA	Yes	Yes	Yes	Yes	Yes
5920		Omaha, NE--IA MSA					
5960		Orlando, FL MSA	Yes	Yes	Yes	Yes	Yes
5990		Owensboro, KY MSA					
6015		Panama City, FL MSA					
6020		Parkersburg--Marietta, WV--OH MSA					
6080		Pensacola, FL MSA	Yes	Yes	Yes	Yes	
6120		Peoria--Pekin, IL MSA	Yes	Yes	Yes	Yes	
6162		Philadelphia--Wilmington--Atlantic City, PA--NJ--DE--MD CMSA					
6162	0560	Atlantic--Cape May, NJ PMSA	Yes	Yes	Yes	Yes	
6162	6160	Philadelphia, PA--NJ PMSA	Yes	Yes	Yes	Yes	Yes
6162	8760	Vineland--Millville--Bridgeton, NJ PMSA					
6162	9160	Wilmington--Newark, DE--MD PMSA					
6200		Phoenix--Mesa, AZ MSA					

MSA-CMSA code	PMSA code	MSA, CMSA, or PMSA Name	2000	2001	2002	2003	2003 Change Profiles 2000-2003
6240		Pine Bluff, AR MSA					
6280		Pittsburgh, PA MSA	Yes	Yes	Yes	Yes	Yes
6320		Pittsfield, MA MSA					
6340		Pocatello, ID MSA					
6400		Portland, ME MSA					
6442		Portland--Salem, OR--WA CMSA					
6442	6440	Portland--Vancouver, OR--WA PMSA					
6442	7080	Salem, OR PMSA	Yes	Yes	Yes	Yes	
6480		Providence--Fall River--Warwick, RI--MA MSA	Yes	Yes	Yes	Yes	Yes
6520		Provo--Orem, UT MSA	Yes	Yes	Yes	Yes	
6560		Pueblo, CO MSA					
6580		Punta Gorda, FL MSA					
6640		Raleigh--Durham--Chapel Hill, NC MSA	Yes	Yes	Yes	Yes	Yes
6660		Rapid City, SD MSA					
6680		Reading, PA MSA	Yes	Yes	Yes	Yes	
6690		Redding, CA MSA					
6720		Reno, NV MSA	Yes	Yes	Yes	Yes	
6740		Richland--Kennewick--Pasco, WA MSA					
6760		Richmond--Petersburg, VA MSA	Yes	Yes	Yes	Yes	Yes
6800		Roanoke, VA MSA					
6820		Rochester, MN MSA					
6840		Rochester, NY MSA	Yes	Yes	Yes	Yes	Yes
6880		Rockford, IL MSA	Yes	Yes	Yes	Yes	

MSA-CMSA code	PMSA code	MSA, CMSA, or PMSA Name	2000	2001	2002	2003	2003 Change Profiles 2000-2003
6895		Rocky Mount, NC MSA					
6922		Sacramento--Yolo, CA CMSA					
6922	6920	Sacramento, CA PMSA	Yes	Yes	Yes	Yes	Yes
6922	9270	Yolo, CA PMSA					
6960		Saginaw--Bay City--Midland, MI MSA	Yes	Yes	Yes	Yes	
6980		St. Cloud, MN MSA					
7000		St. Joseph, MO MSA					
7040		St. Louis, MO--IL MSA	Yes	Yes	Yes	Yes	Yes
7120		Salinas, CA MSA	Yes	Yes	Yes	Yes	
7160		Salt Lake City--Ogden, UT MSA	Yes	Yes	Yes	Yes	Yes
7200		San Angelo, TX MSA					
7240		San Antonio, TX MSA	Yes	Yes	Yes	Yes	Yes
7320		San Diego, CA MSA	Yes	Yes	Yes	Yes	Yes
7362		San Francisco--Oakland--San Jose, CA CMSA	Yes	Yes	Yes	Yes	Yes
7362	5775	Oakland, CA PMSA	Yes	Yes	Yes	Yes	Yes
7362	7360	San Francisco, CA PMSA	Yes	Yes	Yes	Yes	Yes
7362	7400	San Jose, CA PMSA	Yes	Yes	Yes	Yes	Yes
7362	7485	Santa Cruz--Watsonville, CA PMSA			Yes	Yes	
7362	7500	Santa Rosa, CA PMSA	Yes	Yes	Yes	Yes	
7362	8720	Vallejo--Fairfield--Napa, CA PMSA	Yes	Yes	Yes	Yes	
7460		San Luis Obispo--Atascadero--Paso Robles, CA MSA			Yes	Yes	
7480		Santa Barbara--Santa Maria--Lompoc, CA MSA	Yes	Yes	Yes	Yes	
7490		Santa Fe, NM MSA					

MSA-CMSA code	PMSA code	MSA, CMSA, or PMSA Name	2000	2001	2002	2003	2003 Change Profiles 2000-2003
7510		Sarasota--Bradenton, FL MSA	Yes	Yes	Yes	Yes	
7520		Savannah, GA MSA	Yes	Yes	Yes	Yes	
7560		Scranton--Wilkes-Barre--Hazleton, PA MSA	Yes	Yes	Yes	Yes	
7602		Seattle--Tacoma--Bremerton, WA CMSA					
7602	1150	Bremerton, WA PMSA					
7602	5910	Olympia, WA PMSA					
7602	7600	Seattle--Bellevue--Everett, WA PMSA	Yes	Yes	Yes	Yes	Yes
7602	8200	Tacoma, WA PMSA	Yes	Yes	Yes	Yes	
7610		Sharon, PA MSA					
7620		Sheboygan, WI MSA					
7640		Sherman--Denison, TX MSA					
7680		Shreveport--Bossier City, LA MSA	Yes	Yes	Yes	Yes	
7720		Sioux City, IA--NE MSA					
7760		Sioux Falls, SD MSA					
7800		South Bend, IN MSA	Yes	Yes	Yes	Yes	
7840		Spokane, WA MSA	Yes	Yes	Yes	Yes	
7880		Springfield, IL MSA					
7920		Springfield, MO MSA	Yes	Yes	Yes	Yes	
8000		Springfield, MA MSA	Yes	Yes	Yes	Yes	
8050		State College, PA MSA					
8080		Steubenville--Weirton, OH--WV MSA					
8120		Stockton--Lodi, CA MSA	Yes	Yes	Yes	Yes	
8140		Sumter, SC MSA					

MSA-CMSA code	PMSA code	MSA, CMSA, or PMSA Name	2000	2001	2002	2003	2003 Change Profiles 2000-2003
8160		Syracuse, NY MSA	Yes	Yes	Yes	Yes	
8240		Tallahassee, FL MSA	Yes	Yes	Yes	Yes	
8280		Tampa--St. Petersburg--Clearwater, FL MSA	Yes	Yes	Yes	Yes	Yes
8320		Terre Haute, IN MSA					
8360		Texarkana, TX--Texarkana, AR MSA					
8400		Toledo, OH MSA	Yes	Yes	Yes	Yes	
8440		Topeka, KS MSA					
8520		Tucson, AZ MSA	Yes	Yes	Yes	Yes	
8560		Tulsa, OK MSA	Yes	Yes	Yes	Yes	
8600		Tuscaloosa, AL MSA					
8640		Tyler, TX MSA					
8680		Utica--Rome, NY MSA	Yes	Yes	Yes	Yes	
8750		Victoria, TX MSA					
8780		Visalia--Tulare--Porterville, CA MSA	Yes	Yes	Yes	Yes	Yes
8800		Waco, TX MSA					
8872		Washington--Baltimore, DC--MD--VA--WV CMSA					
8872	0720	Baltimore, MD PMSA					
8872	3180	Hagerstown, MD PMSA					
8872	8840	Washington, DC--MD--VA--WV PMSA					
8920		Waterloo--Cedar Falls, IA MSA					
8940		Wausau, WI MSA					
8960		West Palm Beach--Boca Raton, FL MSA	Yes	Yes	Yes	Yes	Yes
9000		Wheeling, WV--OH MSA					

<b>MSA-CMSA code</b>	<b>PMSA code</b>	<b>MSA, CMSA, or PMSA Name</b>	<b>2000</b>	<b>2001</b>	<b>2002</b>	<b>2003</b>	<b>2003 Change Profiles 2000-2003</b>
9040		Wichita, KS MSA	Yes	Yes	Yes	Yes	
9080		Wichita Falls, TX MSA					
9140		Williamsport, PA MSA					
9200		Wilmington, NC MSA					
9260		Yakima, WA MSA					
9280		York, PA MSA	Yes	Yes	Yes	Yes	
9320		Youngstown--Warren, OH MSA	Yes	Yes	Yes	Yes	
9340		Yuba City, CA MSA					
9360		Yuma, AZ MSA					

## Geographic Areas for Which Data Are Available

Note: \* denotes areas that fall within American Community Survey Test Sites

State	Name	Summary Level	2000	2001	2002	2003	2003 Change 2000 to 2003
UNITED STATES	<i>Nation</i>	010	x	x	x	x	x
ALABAMA	<i>state only</i>	040	x	x	x	x	x
	Birmingham, AL MSA	380	x	x	x	x	
	Huntsville, AL MSA	380	x	x	x	x	
	Jefferson County	050	x	x	x	x	
	Madison County	050	x	x	x	x	
	Mobile County	050	x	x	x	x	
	Mobile, AL MSA	380	x	x	x	x	
	Montgomery, AL MSA	380	x	x	x	x	
ALASKA	<i>state only</i>	040	x	x	x	x	x
	AK Congressional District (at Large)	500	x	x	x	x	
	Anchorage Municipality	050, 160	x	x	x	x	
	Anchorage municipality, Anchorage Municipality pt.	155	x	x	x	x	
	Anchorage, AK MSA	380	x	x	x	x	
ARIZONA	<i>state only</i>	040	x	x	x	x	x
	AZ Congressional District 1	500	x	x			
	AZ Congressional District 3	500			x	x	
	AZ Congressional District 4	500	x	x	x	x	
	AZ Congressional District 5	500			x	x	
	Maricopa County	050	x	x	x	x	x
	Mesa city	160	x	x	x	x	

State	Name	Summary Level					2003
			2000	2001	2002	2003	Change 2000 to 2003
	Mesa city, Maricopa County pt.	155	x	x	x	x	
	Phoenix city	160	x	x	x	x	x
	Phoenix city, Maricopa County pt.	155	x	x	x	x	x
	Pima County *	001, 050	x	x	x	x	x
	Tucson city *	160	x	x	x	x	x
	Tucson city, Pima County pt. *	155	x	x	x	x	x
	Tucson, AZ MSA *	380	x	x	x	x	x
ARKANSAS	<i>state only</i>	040	x	x	x	x	x
	Fayetteville--Springdale--Rogers, AR MSA	380	x	x	x	x	
	Jefferson County *	050	x	x	x	x	
	Little Rock--North Little Rock, AR MSA	380	x	x	x	x	
	Pulaski County	050	x	x	x	x	
CALIFORNIA	<i>state only</i>	040	x	x	x	x	x
	Alameda County	050	x	x	x	x	x
	Anaheim city	160	x	x	x	x	
	Anaheim city, Orange County pt.	155	x	x	x	x	
	Bakersfield city	160			x	x	
	Bakersfield city, Kern County pt.	155			x	x	
	Bakersfield, CA MSA	380	x	x	x	x	
	CA Congressional District 5	500	x	x	x	x	
	CA Congressional District 6	500	x	x	x	x	
	CA Congressional District 7	500	x	x	x	x	
	CA Congressional District 8	500	x	x	x	x	
	CA Congressional District 9	500	x	x	x	x	
	CA Congressional District 10	500	x	x	x	x	
	CA Congressional District 11	500	x	x	x	x	



<b>State</b>	<b>Name</b>	<b>Summary Level</b>	<b>2000</b>	<b>2001</b>	<b>2002</b>	<b>2003</b>	<b>2003 Change 2000 to 2003</b>
	CA Congressional District 12	500	x	x	x	x	
	CA Congressional District 13	500	x	x	x	x	
	CA Congressional District 14	500	x	x	x	x	
	CA Congressional District 15	500	x	x	x	x	
	CA Congressional District 16	500	x	x	x	x	
	CA Congressional District 21	500	x	x	x	x	
	CA Congressional District 22	500	x	x	x	x	
	CA Congressional District 23	500	x	x	x	x	
	CA Congressional District 24	500	x	x	x	x	
	CA Congressional District 25	500	x	x			
	CA Congressional District 26	500	x	x	x	x	
	CA Congressional District 27	500	x	x	x	x	
	CA Congressional District 28	500	x	x	x	x	
	CA Congressional District 29	500	x	x	x	x	
	CA Congressional District 30	500	x	x	x	x	
	CA Congressional District 31	500	x	x	x	x	
	CA Congressional District 32	500	x	x	x	x	
	CA Congressional District 33	500	x	x	x	x	
	CA Congressional District 34	500	x	x	x	x	
	CA Congressional District 35	500	x	x	x	x	
	CA Congressional District 36	500	x	x	x	x	
	CA Congressional District 37	500	x	x	x	x	
	CA Congressional District 38	500	x	x	x	x	
	CA Congressional District 39	500	x	x	x	x	
	CA Congressional District 40	500			x	x	
	CA Congressional District 41	500	x	x	x	x	
	CA Congressional District 42	500	x	x	x	x	
	CA Congressional District 43	500	x	x	x	x	

State	Name	Summary Level					2003
			2000	2001	2002	2003	Change 2000 to 2003
	CA Congressional District 44	500	x	x	x	x	
	CA Congressional District 45	500	x	x	x	x	
	CA Congressional District 46	500	x	x	x	x	
	CA Congressional District 47	500	x	x	x	x	
	CA Congressional District 48	500	x	x	x	x	
	CA Congressional District 49	500	x	x	x	x	
	CA Congressional District 50	500	x	x	x	x	
	CA Congressional District 51	500	x	x			
	CA Congressional District 52	500			x	x	
	CA Congressional District 53	500			x	x	
	Contra Costa County	050	x	x	x	x	
	Fresno city	160	x	x	x	x	
	Fresno city, Fresno County pt.	155	x	x	x	x	
	Fresno County	050	x	x	x	x	
	Fresno, CA MSA	380	x	x	x	x	
	Kern County	050	x	x	x	x	
	Long Beach city	160	x	x	x	x	
	Long Beach city, Los Angeles County pt.	155	x	x	x	x	
	Los Angeles city	160	x	x	x	x	x
	Los Angeles city, Los Angeles County pt.	155	x	x	x	x	x
	Los Angeles County	050	x	x	x	x	x
	Los Angeles--Long Beach, CA PMSA	385	x	x	x	x	x
	Los Angeles--Riverside--Orange County, CA CMSA	380	x	x	x	x	x
	Modesto, CA MSA	380	x	x	x	x	
	Monterey County	050	x	x	x	x	
	Oakland city	160	x	x	x	x	
	Oakland city, Alameda County pt.	155	x	x	x	x	
	Oakland, CA PMSA	385	x	x	x	x	x

State	Name	Summary Level					2003
			2000	2001	2002	2003	Change 2000 to 2003
	Orange County	050	x	x	x	x	x
	Orange County, CA PMSA	385	x	x	x	x	x
	Placer County, CA	050		x	x	x	
	Riverside city	160	x	x	x	x	
	Riverside city, Riverside County pt.	155	x	x	x	x	
	Riverside County	050	x	x	x	x	x
	Riverside--San Bernardino, CA PMSA	385	x	x	x	x	x
	Sacramento city	160	x	x	x	x	
	Sacramento city, Sacramento County pt.	155	x	x	x	x	
	Sacramento County	050	x	x	x	x	x
	Sacramento, CA PMSA	385	x	x	x	x	x
	Salinas, CA MSA	380	x	x	x	x	
	San Bernardino County	050	x	x	x	x	x
	San Diego city	160	x	x	x	x	x
	San Diego city, San Diego County pt.	155	x	x	x	x	x
	San Diego County	050	x	x	x	x	x
	San Diego, CA MSA	380	x	x	x	x	x
	San Francisco city *	160	x	x	x	x	x
	San Francisco city, San Francisco County pt. *	155	x	x	x	x	x
	San Francisco County *	001, 050	x	x	x	x	x
	San Francisco, CA PMSA	385	x	x	x	x	x
	San Francisco--Oakland--San Jose, CA CMSA	380	x	x	x	x	x
	San Joaquin County	050	x	x	x	x	
	San Jose city	160	x	x	x	x	
	San Jose city, Santa Clara County pt.	155	x	x	x	x	
	San Jose, CA PMSA	385	x	x	x	x	x
	San Luis Obispo County	050			x	x	
	San Luis Obispo – Atascadero – Paso Robles, CA MSA	380			x	x	

State	Name	Summary Level					2003
			2000	2001	2002	2003	Change 2000 to 2003
	San Mateo County	050	x	x	x	x	
	Santa Ana city	160	x	x	x	x	
	Santa Ana city, Orange County pt.	155	x	x	x	x	
	Santa Barbara County	050	x	x	x	x	
	Santa Barbara--Santa Maria--Lompoc, CA MSA	380	x	x	x	x	
	Santa Clara County	050	x	x	x	x	x
	Santa Cruz County	050			x	x	
	Santa Cruz – Watsonville, CA PMSA	385			x	x	
	Santa Rosa, CA PMSA	385	x	x	x	x	
	Solano County	050	x	x	x	x	
	Sonoma County	050	x	x	x	x	
	Stanislaus County	050	x	x	x	x	
	Stockton city	160		x	x	x	
	Stockton city, San Joaquin County pt.	155		x	x	x	
	Stockton--Lodi, CA MSA	380	x	x	x	x	
	Tulare County *	001, 050	x	x	x	x	x
	Vallejo--Fairfield--Napa, CA PMSA	385	x	x	x	x	
	Ventura County	050	x	x	x	x	
	Ventura, CA PMSA	385	x	x	x	x	
	Visalia city *	160	x	x	x	x	
	Visalia--Tulare--Porterville, CA MSA*	380	x	x	x	x	
COLORADO	<i>state only</i>	040	x	x	x	x	x
	Adams County	050	x	x	x	x	
	Arapahoe County	050	x	x	x	x	
	Aurora city	160	x	x	x	x	
	Boulder County	050	x	x	x	x	
	Boulder--Longmont, CO PMSA	385	x	x	x	x	

State	Name	Summary Level					2003
			2000	2001	2002	2003	Change 2000 to 2003
	CO Congressional District 1	500	x	x	x	x	
	CO Congressional District 6	500	x	x			
	CO Congressional District 7	500			x	x	
	Colorado Springs city	160	x	x	x	x	
	Colorado Springs city, El Paso County pt.	155	x	x	x	x	
	Colorado Springs, CO MSA	380	x	x	x	x	
	Denver city	160	x	x	x	x	
	Denver city, Denver County pt.	155	x	x	x	x	
	Denver County	050	x	x	x	x	
	Denver, CO PMSA	385	x	x	x	x	x
	El Paso County	050	x	x	x	x	
	Jefferson County	050	x	x	x	x	
CONNECTICUT	<i>state only</i>	040	x	x	x	x	x
	Boston--Worcester--Lawrence, MA--NH--ME--CT CMSA	380	x	x	x	x	x
	Bridgeport, CT PMSA	385	x	x	x	x	
	CT Congressional District 1	500	x	x	x	x	
	CT Congressional District 2	500	x	x	x	x	
	CT Congressional District 3	500	x	x	x	x	
	CT Congressional District 4	500	x	x	x	x	
	CT Congressional District 5	500	x	x	x	x	
	CT Congressional District 6	500	x	x			
	Fairfield County	050	x	x	x	x	
	Hartford County	050	x	x	x	x	
	Hartford, CT MSA	380	x	x	x	x	
	New Haven County	050	x	x	x	x	
	New Haven--Meriden, CT PMSA	385	x	x	x	x	

State	Name	Summary Level					2003
			2000	2001	2002	2003	Change 2000 to 2003
	New London County	050			x	x	
	New London--Norwich, CT--RI MSA	380	x	x			
	Stamford--Norwalk, CT PMSA	385	x	x	x	x	
	Worcester, MA--CT PMSA	385	x	x	x	x	
DELAWARE	<i>state only</i>	040	x	x	x	x	x
	DE Congressional District (at Large)	500	x	x	x	x	
	New Castle County	050	x	x	x	x	
DISTRICT OF COLUMBIA	<i>state only</i>	040	x	x	x	x	x
	DC Delegate District (at Large)	500	x	x	x	x	
	District of Columbia	050	x	x	x	x	
	Washington city	160	x	x	x	x	
	Washington city, District of Columbia pt.	155	x	x	x	x	
FLORIDA	<i>state only</i>	040	x	x	x	x	x
	Brevard County	050	x	x	x		
	Broward County *	001, 050	x	x	x	x	x
	Coral Springs city *	160	x	x	x	x	
	Davie town *	160	x	x	x	x	
	Daytona Beach, FL MSA	380	x	x	x	x	
	Deerfield Beach city *	160	x		x	x	
	Duval County	050	x	x	x	x	
	Escambia County	050	x	x	x	x	
	FL Congressional District 4	500	x	x			
	FL Congressional District 7	500	x	x			
	FL Congressional District 8	500	x	x			

State	Name	Summary Level					2003
			2000	2001	2002	2003	Change 2000 to 2003
	FL Congressional District 9	500	x	x	x	x	
	FL Congressional District 10	500	x	x	x	x	
	FL Congressional District 11	500	x	x	x	x	
	FL Congressional District 12	500			x	x	
	FL Congressional District 17	500	x	x	x	x	
	FL Congressional District 18	500	x	x			
	FL Congressional District 19	500	x	x	x	x	
	FL Congressional District 20	500			x	x	
	FL Congressional District 21	500	x	x	x	x	
	FL Congressional District 22	500	x	x	x	x	
	FL Congressional District 24	500			x	x	
	Fort Lauderdale city *	160	x	x	x	x	
	Fort Lauderdale, FL PMSA *	385	x	x	x	x	x
	Fort Myers--Cape Coral, FL MSA	380	x	x	x	x	
	Fort Pierce--Port St. Lucie, FL MSA	380	x	x	x	x	
	Hillsborough County	050	x	x	x	x	x
	Hollywood city *	160	x	x	x	x	
	Jacksonville city	160	x	x	x	x	
	Jacksonville city, Duval County pt.	155	x	x	x	x	
	Jacksonville, FL MSA	380	x	x	x	x	x
	Lakeland--Winter Haven, FL MSA	380	x	x	x	x	
	Lee County	050	x	x	x	x	
	Manatee County	050	x	x	x	x	
	Melbourne--Titusville--Palm Bay, FL MSA	380	x	x	x	x	
	Miami city	160	x	x	x	x	
	Miami city, Miami-Dade County pt.	155	x	x	x	x	
	Miami, FL PMSA	385	x	x	x	x	x
	Miami-Dade County	050	x	x	x	x	x

State	Name	Summary					2003 Change 2000 to 2003
		Level	2000	2001	2002	2003	
	Miami--Fort Lauderdale, FL CMSA	380	x	x	x	x	x
	Miramar city *	160	x	x	x	x	
	Orange County	050	x	x	x	x	
	Orlando, FL MSA	380	x	x	x	x	x
	Palm Beach County	050	x	x	x	x	x
	Pasco County	050	x	x	x	x	
	Pembroke Pines city *	160	x	x	x	x	
	Pensacola, FL MSA	380	x	x	x	x	
	Pinellas County	050	x	x	x	x	
	Plantation city *	160	x	x	x	x	
	Polk County	050	x	x	x	x	
	Pompano Beach city *	160	x	x	x	x	
	Sarasota County	050	x	x	x	x	
	Sarasota--Bradenton, FL MSA	380	x	x	x	x	
	Seminole County	050	x	x	x	x	
	St. Petersburg city	160		x	x	x	
	St. Petersburg city, Pinellas County pt.	155		x			
	Sunrise city *	160	x	x	x	x	
	Tallahassee, FL MSA	380	x	x	x	x	
	Tampa city	160	x	x	x	x	
	Tampa city, Hillsborough County pt.	155	x	x	x	x	
	Tampa--St. Petersburg--Clearwater, FL MSA	380	x	x	x	x	x
	Volusia County	050	x	x	x	x	
	West Palm Beach--Boca Raton, FL MSA	380	x	x	x	x	x
GEORGIA	<i>state only</i>	040	x	x	x	x	x
	Atlanta city	160	x	x	x	x	
	Atlanta city, Fulton County pt.	155	x	x	x	x	



State	Name	Summary Level					2003
			2000	2001	2002	2003	Change 2000 to 2003
	Atlanta, GA MSA	380	x	x	x	x	x
	Augusta--Aiken, GA--SC MSA	380	x	x	x	x	
	Clayton County	050			x	x	
	Cobb County	050	x	x	x	x	
	DeKalb County	050	x	x	x	x	
	Fulton County	050	x	x	x	x	
	GA Congressional District 4	500	x	x	x	x	
	GA Congressional District 5	500	x	x	x	x	
	GA Congressional District 6	500	x	x	x	x	
	GA Congressional District 7	500			x	x	
	Gwinnett County	050	x	x	x	x	
	Macon, GA MSA	380	x	x	x	x	
	Savannah, GA MSA	380	x	x	x	x	
HAWAII	<i>state only</i>	040	x	x	x	x	x
	HI Congressional District 1	500	x	x	x	x	
	Honolulu CDP	160	x	x	x	x	
	Honolulu CDP, Honolulu County pt.	155	x	x	x	x	
	Honolulu County	050	x	x	x	x	
	Honolulu, HI MSA	380	x	x	x	x	
IDAHO	<i>state only</i>	040	x	x	x	x	x
	Ada County	050	x	x	x	x	
	Boise City, ID MSA	380	x	x	x	x	
ILLINOIS	<i>state only</i>	040	x	x	x	x	x
	Chicago city	160	x	x	x	x	x
	Chicago city, Cook County pt.	155	x	x	x	x	x

State	Name	Summary Level					2003
			2000	2001	2002	2003	Change 2000 to 2003
	Chicago, IL PMSA	385	x	x	x	x	x
	Cook County	050	x	x	x	x	x
	Davenport--Moline--Rock Island, IA--IL MSA	380	x	x	x	x	
	DuPage County	050	x	x	x	x	
	IL Congressional District 1	500	x	x	x	x	
	IL Congressional District 2	500	x	x	x	x	
	IL Congressional District 3	500	x	x	x	x	
	IL Congressional District 4	500	x	x	x	x	
	IL Congressional District 5	500	x	x	x	x	
	IL Congressional District 6	500	x	x	x	x	
	IL Congressional District 7	500	x	x	x	x	
	IL Congressional District 8	500	x	x	x	x	
	IL Congressional District 9	500	x	x	x	x	
	IL Congressional District 10	500	x	x	x	x	
	IL Congressional District 13	500	x	x	x	x	
	Kane County	050	x	x	x	x	
	Lake County *	001, 050	x	x	x	x	x
	Madison County	050	x	x	x	x	
	McHenry County	050	x	x	x	x	
	Peoria--Pekin, IL MSA	380	x	x	x	x	
	Rockford, IL MSA	380	x	x	x	x	
	St. Clair County	050	x	x	x	x	
	St. Louis, MO--IL MSA	380	x	x	x	x	x
	Vernon township *	060		x	x	x	
	Waukegan city *	160	x	x	x	x	
	Waukegan township *	060		x	x	x	
	Will County	050	x	x	x	x	
	Winnebago County	050	x	x	x	x	

<b>State</b>	<b>Name</b>	<b>Summary Level</b>	<b>2000</b>	<b>2001</b>	<b>2002</b>	<b>2003</b>	<b>2003 Change 2000 to 2003</b>
INDIANA	<i>state only</i>	040	x	x	x	x	x
	Allen County	050	x	x	x	x	
	Fort Wayne, IN MSA	380	x	x	x	x	
	IN Congressional District 7	500			x	x	
	IN Congressional District 10	500	x	x			
	Indianapolis city (balance)	160	x	x	x	x	
	Indianapolis city (balance), Marion County pt.	155	x	x	x	x	
	Indianapolis, IN MSA	380	x	x	x	x	x
	Lake County	050	x	x	x	x	
	Marion County	050	x	x	x	x	
	South Bend, IN MSA	380	x	x	x	x	
	St. Joseph County	050	x	x	x	x	
	IOWA	<i>state only</i>	040	x	x	x	x
Black Hawk County *		001, 050	x	x	x	x	
Davenport--Moline--Rock Island, IA--IL MSA		380	x	x	x	x	
Des Moines, IA MSA		380	x	x	x	x	
Polk County		050	x	x	x	x	
Waterloo city *		160	x		x	x	
KANSAS		<i>state only</i>	040	x	x	x	x
	Johnson County	050	x	x	x	x	
	Kansas City, MO--KS MSA	380	x	x	x	x	x
	KS Congressional District 3	500	x	x	x	x	
	Sedgwick County	050	x	x	x	x	
	Wichita city	160	x	x	x	x	
	Wichita city, Sedgwick County pt.	155	x	x	x	x	

<b>State</b>	<b>Name</b>	<b>Summary Level</b>	<b>2000</b>	<b>2001</b>	<b>2002</b>	<b>2003</b>	<b>2003 Change 2000 to 2003</b>
	Wichita, KS MSA	380	x	x	x	x	
KENTUCKY	<i>state only</i>	040	x	x	x	x	x
	Fayette County	050			x	x	
	Jefferson County	050	x	x	x	x	
	KY Congressional District 3	500	x	x	x	x	
	Lexington, KY MSA	380	x	x	x	x	
	Lexington-Fayette	160			x	x	
	Lexington-Fayette, Fayette County pt.	155			x	x	
	Louisville city	160			x	x	
	Louisville city, Jefferson County pt.	155			x	x	
LOUISIANA	<i>state only</i>	040	x	x	x	x	x
	Baton Rouge, LA MSA	380	x	x	x	x	
	Caddo Parish	050			x	x	
	East Baton Rouge Parish	050	x	x	x	x	
	Jefferson Parish	050	x	x	x	x	
	LA Congressional District 2	500	x	x	x	x	
	Lafayette, LA MSA	380	x	x	x	x	
	New Orleans city	160	x	x	x	x	
	New Orleans city, Orleans Parish pt.	155	x	x	x	x	
	New Orleans, LA MSA	380	x	x	x	x	x
	Orleans Parish	050	x	x	x	x	
	Shreveport--Bossier City, LA MSA	380	x	x	x	x	
MAINE	<i>state only</i>	040	x	x	x	x	x
	Boston--Worcester--Lawrence, MA--NH--ME--CT CMSA	380	x	x	x	x	x

State	Name	Summary Level					2003
			2000	2001	2002	2003	Change 2000 to 2003
	Cumberland County	050	x	x	x	x	
	ME Congressional District 1	500	x	x	x	x	
	ME Congressional District 2	500	x	x	x	x	
	Portsmouth--Rochester, NH--ME PMSA	385					x
MARYLAND	<i>state only</i>	040	x	x	x	x	x
	Anne Arundel County	050	x	x	x	x	
	Baltimore city	050, 160	x	x	x	x	
	Baltimore city, Baltimore city pt.	155	x	x	x	x	
	Baltimore County	050	x	x	x	x	
	Calvert County *	001, 050	x	x	x	x	
	Howard County	050		x	x	x	
	MD Congressional District 2	500	x	x	x	x	
	MD Congressional District 3	500	x	x	x	x	
	MD Congressional District 4	500	x	x	x	x	
	MD Congressional District 7	500	x	x	x	x	
	MD Congressional District 8	500	x	x	x	x	
	Montgomery County	050	x	x	x	x	
	Prince George's County	050	x	x	x	x	
MASSACHUSETTS	<i>state only</i>	040	x	x	x	x	x
	Boston--Worcester--Lawrence, MA--NH--ME--CT CMSA	380	x	x	x	x	x
	Boston, MA--NH PMSA	385	x	x	x	x	x
	Boston city	160	x	x	x	x	
	Boston city, Suffolk County pt.	155	x	x	x	x	
	Bristol County	050	x	x	x	x	
	Brockton, MA PMSA	385		x	x	x	

State	Name	Summary Level					2003
			2000	2001	2002	2003	Change 2000 to 2003
	Essex County	050	x	x	x	x	
	Hampden County *	001, 050	x	x	x	x	x
	Lawrence, MA--NH PMSA	385	x	x	x	x	
	Lowell, MA--NH PMSA	385	x	x	x	x	
	MA Congressional District 1	500	x	x	x	x	
	MA Congressional District 2	500	x	x	x	x	
	MA Congressional District 3	500	x	x	x	x	
	MA Congressional District 4	500	x	x	x	x	
	MA Congressional District 5	500	x	x	x	x	
	MA Congressional District 6	500	x	x	x	x	
	MA Congressional District 7	500	x	x	x	x	
	MA Congressional District 8	500	x	x	x	x	
	MA Congressional District 9	500	x	x	x	x	
	MA Congressional District 10	500	x	x	x	x	
	Middlesex County	050	x	x	x	x	x
	Norfolk County	050	x	x	x	x	
	Plymouth County	050	x	x	x	x	
	Providence--Fall River--Warwick, RI--MA MSA	380	x	x	x	x	
	Springfield city *	060	x	x	x	x	
	Springfield city *	160				x	
	Springfield, MA MSA	380	x	x	x	x	
	Suffolk County	050	x	x	x	x	
	Worcester County	050	x	x	x	x	
	Worcester, MA--CT PMSA	385	x	x	x	x	
MICHIGAN	<i>state only</i>	040	x	x	x	x	x
	Ann Arbor, MI PMSA	385	x	x	x	x	
	Detroit city	160	x	x	x	x	

State	Name	Summary					2003 Change 2000 to 2003
		Level	2000	2001	2002	2003	
	Detroit city, Wayne County pt.	155	x	x	x	x	
	Detroit, MI PMSA	385	x	x	x	x	x
	Detroit--Ann Arbor--Flint, MI CMSA	380	x	x	x	x	x
	Flint, MI PMSA	385	x	x	x	x	
	Genesee County	050	x	x	x	x	
	Grand Rapids--Muskegon--Holland, MI MSA	380	x	x	x	x	x
	Ingham County	050	x	x	x	x	
	Kalamazoo--Battle Creek, MI MSA	380	x	x	x	x	
	Kent County	050	x	x	x	x	
	Lansing--East Lansing, MI MSA	380	x	x	x	x	
	Macomb County	050	x	x	x	x	
	MI Congressional District 6	500	x	x	x	x	
	MI Congressional District 9	500	x	x	x	x	
	MI Congressional District 10	500	x	x			
	MI Congressional District 11	500	x	x	x	x	
	MI Congressional District 12	500	x	x	x	x	
	MI Congressional District 13	500	x	x	x	x	
	MI Congressional District 14	500	x	x	x	x	
	MI Congressional District 15	500	x	x	x	x	
	MI Congressional District 16	500	x	x			
	Oakland County	050	x	x	x	x	x
	Saginaw--Bay City--Midland, MI MSA	380	x	x	x	x	
	Washtenaw County	050	x	x	x	x	
	Wayne County	050	x	x	x	x	x
MINNESOTA	<i>state only</i>	040	x	x	x	x	x
	Anoka County	050	x	x	x	x	
	Dakota County	050	x	x	x	x	

State	Name	Summary Level					2003
			2000	2001	2002	2003	Change 2000 to 2003
	Hennepin County	050	x	x	x	x	x
	Minneapolis city	160	x	x	x	x	
	Minneapolis city, Hennepin County pt.	155	x	x	x	x	
	MN Congressional District 3	500	x	x	x	x	
	MN Congressional District 4	500	x	x	x	x	
	MN Congressional District 5	500	x	x	x	x	
	MN Congressional District 6	500	x	x	x	x	
	Ramsey County	050	x	x	x	x	
	St. Paul city	160	x	x	x	x	
	St. Paul city, Ramsey County pt.	155	x	x	x	x	
MISSISSIPPI	<i>state only</i>	040	x	x	x	x	x
	Biloxi--Gulfport--Pascagoula, MS MSA	380	x	x	x	x	
	Jackson, MS MSA	380	x	x	x	x	
	Madison County *	001, 050	x	x	x	x	
MISSOURI	<i>state only</i>	040	x	x	x	x	x
	Jackson County	050	x	x	x	x	
	Kansas City city	160	x	x	x	x	
	Kansas City city, Jackson County pt.	155	x	x	x	x	
	Kansas City, MO--KS MSA	380	x	x	x	x	x
	MO Congressional District 1	500	x	x	x	x	
	MO Congressional District 2	500	x	x	x	x	
	MO Congressional District 5	500	x	x	x	x	
	Springfield, MO MSA	380	x	x	x	x	
	St. Charles County	050	x	x	x	x	
	St. Louis city	050, 160	x	x	x	x	
	St. Louis city, St. Louis city pt.	155	x	x	x	x	



State	Name	Summary Level					2003
			2000	2001	2002	2003	Change 2000 to 2003
	St. Louis County	050	x	x	x	x	
	St. Louis, MO--IL MSA	380	x	x	x	x	x
MONTANA	<i>state only</i>	040	x	x	x	x	x
	Flathead-Lake *	001	x	x	x	x	
	Flathead County *	050	x	x	x	x	
	MT Congressional District (at Large)	500	x	x	x	x	
NEBRASKA	<i>state only</i>	040	x	x	x	x	x
	Douglas County *	001, 050	x	x	x	x	x
	NE Congressional District 2	500	x	x	x	x	
	Lancaster County	050			x	x	
	Lincoln, NE MSA	380			x	x	
	Omaha city *	160	x	x	x	x	x
	Omaha city, Douglas County pt. *	155	x	x	x	x	
NEVADA	<i>state only</i>	040	x	x	x	x	x
	Clark County	050	x	x	x	x	x
	Las Vegas city	160	x	x	x	x	
	Las Vegas city, Clark County pt.	155	x	x	x	x	
	NV Congressional District 1	500	x	x	x	x	
	NV Congressional District 3	500			x	x	
	Reno, NV MSA	380	x	x	x	x	
	Washoe County	050	x	x	x	x	
NEW HAMPSHIRE	<i>state only</i>	040	x	x	x	x	x
	Boston--Worcester--Lawrence, MA--NH--ME--CT CMSA	380	x	x	x	x	x

State	Name	Summary				2003 Change 2000 to 2003	
		Level	2000	2001	2002		2003
	Boston, MA--NH PMSA	385	x	x	x	x	x
	Hillsborough County	050	x	x	x	x	
	Lawrence, MA--NH PMSA	385	x	x	x	x	
	Lowell, MA--NH PMSA	385	x	x	x	x	
	NH Congressional District 1	500	x	x	x	x	
	NH Congressional District 2	500	x	x	x	x	
	Portsmouth--Rochester, NH--ME PMSA	385					x
	Rockingham County	050	x	x	x	x	
NEW JERSEY	<i>state only</i>	040	x	x	x	x	x
	Atlantic County	050			x	x	
	Atlantic--Cape May, NJ PMSA	385	x	x	x	x	
	Bergen County	050	x	x	x	x	
	Bergen--Passaic, NJ PMSA	385	x	x	x	x	x
	Burlington County	050	x	x	x	x	
	Camden County	050	x	x	x	x	
	Essex County	050	x	x	x	x	
	Gloucester County	050		x	x	x	
	Hudson County	050	x	x	x	x	
	Jersey City, NJ PMSA	385	x	x	x	x	
	Mercer County	050	x	x	x	x	
	Middlesex County	050	x	x	x	x	
	Middlesex--Somerset--Hunterdon, NJ PMSA	385	x	x	x	x	x
	Monmouth County	050	x	x	x	x	
	Monmouth--Ocean, NJ PMSA	385	x	x	x	x	x
	Morris County	050	x	x	x	x	
	Newark city	160	x		x	x	
	Newark city, Essex County pt.	155	x		x	x	

State	Name	Summary					2003 Change 2000 to 2003
		Level	2000	2001	2002	2003	
	Newark, NJ PMSA	385	x	x	x	x	x
	NJ Congressional District 1	500	x	x	x	x	
	NJ Congressional District 2	500	x	x	x	x	
	NJ Congressional District 3	500	x	x	x	x	
	NJ Congressional District 4	500	x	x	x	x	
	NJ Congressional District 5	500	x	x	x	x	
	NJ Congressional District 6	500	x	x	x	x	
	NJ Congressional District 7	500	x	x	x	x	
	NJ Congressional District 8	500	x	x	x	x	
	NJ Congressional District 9	500	x	x	x	x	
	NJ Congressional District 10	500	x	x	x	x	
	NJ Congressional District 11	500	x	x	x	x	
	NJ Congressional District 12	500	x	x	x	x	
	NJ Congressional District 13	500	x	x	x	x	
	Ocean County	050	x	x	x	x	
	Passaic County	050	x	x	x	x	
	Philadelphia, PA--NJ PMSA	385	x	x	x	x	
	Somerset County	050	x	x	x	x	
	Trenton, NJ PMSA	385	x	x	x	x	
	Union County	050	x	x	x	x	
NEW MEXICO	<i>state only</i>	040	x	x	x	x	x
	Albuquerque city	160	x	x	x	x	
	Albuquerque city, Bernalillo County pt.	155	x	x	x	x	
	Bernalillo County	050	x	x	x	x	
NEW YORK	<i>state only</i>	040	x	x	x	x	x
	Albany County	050	x	x	x	x	

State	Name	Summary Level					2003
			2000	2001	2002	2003	Change 2000 to 2003
	Albany--Schenectady--Troy, NY MSA	380	x	x	x	x	
	Binghamton, NY MSA	380			x	x	
	Bronx borough *	060	x	x	x	x	x
	Bronx County *	001, 050	x	x	x	x	x
	Brookhaven town	060	x	x	x	x	
	Brooklyn borough	060	x	x	x	x	x
	Buffalo city	160	x	x	x	x	
	Buffalo city, Erie County pt.	155	x	x	x	x	
	Buffalo--Niagara Falls, NY MSA	380	x	x	x	x	x
	Clarkstown town *	060	x	x	x	x	
	Dutchess County	050	x	x	x	x	
	Dutchess County, NY PMSA	385	x	x	x	x	
	Erie County	050	x	x	x	x	
	Hempstead town	060	x	x	x	x	
	Islip town	060	x	x	x	x	
	Kings County	050	x	x	x	x	x
	Manhattan borough	060	x	x	x	x	x
	Monroe County	050	x	x	x	x	
	Nassau County	050	x	x	x	x	x
	Nassau--Suffolk, NY PMSA	385	x	x	x	x	x
	New York city	160	x	x	x	x	x
	New York city, Bronx County pt. *	155	x	x	x	x	x
	New York city, Kings County pt.	155	x	x	x	x	x
	New York city, New York County pt.	155	x	x	x	x	x
	New York city, Queens County pt.	155	x	x	x	x	x
	New York city, Richmond County pt.	155	x	x	x	x	
	New York County	050	x	x	x	x	x
	New York, NY PMSA	385	x	x	x	x	x

<b>State</b>	<b>Name</b>	<b>Summary Level</b>	<b>2000</b>	<b>2001</b>	<b>2002</b>	<b>2003</b>	<b>2003 Change 2000 to 2003</b>
	NY Congressional District 1	500	x	x	x	x	
	NY Congressional District 2	500	x	x	x	x	
	NY Congressional District 3	500	x	x	x	x	
	NY Congressional District 4	500	x	x	x	x	
	NY Congressional District 5	500	x	x	x	x	
	NY Congressional District 6	500	x	x	x	x	
	NY Congressional District 7	500	x	x	x	x	
	NY Congressional District 8	500	x	x	x	x	
	NY Congressional District 9	500	x	x	x	x	
	NY Congressional District 10	500	x	x	x	x	
	NY Congressional District 11	500	x	x	x	x	
	NY Congressional District 12	500	x	x	x	x	
	NY Congressional District 13	500	x	x	x	x	
	NY Congressional District 14	500	x	x	x	x	
	NY Congressional District 15	500	x	x	x	x	
	NY Congressional District 16	500	x	x	x	x	
	NY Congressional District 17	500	x	x	x	x	
	NY Congressional District 18	500	x	x	x	x	
	NY Congressional District 19	500	x	x	x	x	
	NY Congressional District 21	500	x	x			
	NY Congressional District 25	500			x	x	
	NY Congressional District 27	500			x	x	
	NY Congressional District 28	500	x	x	x	x	
	NY Congressional District 29	500	x	x			
	NY Congressional District 30	500	x	x			
	Onondaga County	050	x	x	x	x	
	Orange County	050	x	x	x	x	
	Oyster Bay town	060	x	x	x	x	

State	Name	Summary Level					2003
			2000	2001	2002	2003	Change 2000 to 2003
	Queens borough	060	x	x	x	x	x
	Queens County	050	x	x	x	x	x
	Ramapo town *	060	x	x	x	x	
	Richmond County	050	x	x	x	x	
	Rochester, NY MSA	380	x	x	x	x	x
	Rockland County *	050	x	x	x	x	x
	Staten Island borough	060	x	x	x	x	
	Suffolk County	050	x	x	x	x	x
	Syracuse, NY MSA	380	x	x	x	x	
	Utica--Rome, NY MSA	380	x	x	x	x	
	Westchester County	050	x	x	x	x	
NORTH CAROLINA	<i>state only</i>	040 -State	x	x	x	x	x
	Charlotte city	160	x	x	x	x	
	Charlotte city, Mecklenburg County pt.	155	x	x	x	x	
	Cumberland County	050	x	x	x	x	
	Fayetteville, NC MSA	380	x	x	x	x	
	Forsyth County	050	x	x	x	x	
	Greensboro--Winston-Salem--High Point, NC MSA	380	x	x	x	x	x
	Guilford County	050	x	x	x	x	
	Hickory--Morganton--Lenoir, NC MSA	380	x	x	x	x	
	Mecklenburg County	050	x	x	x	x	
	NC Congressional District 4	500			x	x	
	Raleigh city	160	x	x	x	x	
	Raleigh city, Wake County pt.	155	x	x	x	x	
	Raleigh--Durham--Chapel Hill, NC MSA	380	x	x	x	x	x
	Wake County	050	x	x	x	x	

State	Name	Summary Level					2003
			2000	2001	2002	2003	Change 2000 to 2003
NORTH DAKOTA	<i>state only</i>	040	x	x	x	x	x
	ND Congressional District (at Large)	500	x	x	x	x	
OHIO	<i>state only</i>	040	x	x	x	x	x
	Akron, OH PMSA	385	x	x	x	x	
	Butler County	050	x	x	x	x	
	Canton--Massillon, OH MSA	380	x	x	x	x	
	Cincinnati city	160	x	x	x	x	
	Cincinnati city, Hamilton County pt.	155	x	x	x	x	
	Cleveland city	160	x	x	x	x	
	Cleveland city, Cuyahoga County pt.	155	x	x	x	x	
	Cleveland--Akron, OH CMSA	380	x	x	x	x	x
	Cleveland--Lorain--Elyria, OH PMSA	385	x	x	x	x	x
	Columbus city	160	x	x	x	x	
	Columbus city, Franklin County pt. *	155	x	x	x	x	
	Cuyahoga County	050	x	x	x	x	x
	Dayton--Springfield, OH MSA	380	x	x	x	x	
	Franklin County *	001, 050	x	x	x	x	x
	Hamilton County	050	x	x	x	x	
	Hamilton--Middletown, OH PMSA	385	x	x	x	x	
	Lorain County	050	x	x	x	x	
	Lucas County	050	x	x	x	x	
	Mahoning County	050	x		x	x	
	Montgomery County	050	x	x	x	x	
	OH Congressional District 1	500	x	x	x	x	
	OH Congressional District 2	500	x	x			
OH Congressional District 3	500	x	x				
OH Congressional District 10	500	x	x	x	x		

State	Name	Summary Level					2003
			2000	2001	2002	2003	Change 2000 to 2003
	OH Congressional District 11	500	x	x	x	x	
	OH Congressional District 12	500	x	x		x	
	OH Congressional District 13	500	x	x	x	x	
	OH Congressional District 14	500	x	x	x	x	
	OH Congressional District 17	500	x	x	x	x	
	OH Congressional District 19	500	x	x			
	Stark County	050	x	x	x	x	
	Summit County	050	x	x	x	x	
	Toledo city	160	x	x	x	x	
	Toledo city, Lucas County pt.	155	x	x	x	x	
	Toledo, OH MSA	380	x	x	x	x	
	Youngstown--Warren, OH MSA	380	x	x	x	x	
OKLAHOMA	<i>state only</i>	040	x	x	x	x	x
	OK Congressional District 1	500	x	x			
	Oklahoma City city	160	x	x	x	x	
	Oklahoma City city, Oklahoma County pt.	155	x	x	x	x	
	Oklahoma City, OK MSA	380	x	x	x	x	x
	Oklahoma County	050	x	x	x	x	
	Tulsa city	160	x	x	x	x	
	Tulsa city, Tulsa County pt.	155	x	x	x	x	
	Tulsa County	050	x	x	x	x	
	Tulsa, OK MSA	380	x	x	x	x	
OREGON	<i>state only</i>	040	x	x	x	x	x
	Clackamas County	050	x	x	x	x	
	Eugene--Springfield, OR MSA	380	x	x	x	x	
	Gresham city *	160	x	x	x	x	



State	Name	Summary Level					2003
			2000	2001	2002	2003	Change 2000 to 2003
	Lane County	050	x	x	x	x	
	Marion County	050	x	x	x	x	
	Multnomah County *	050	x	x	x	x	x
	OR Congressional District 3	500	x	x	x	x	
	Portland city	160	x	x	x	x	x
	Portland city, Multnomah County pt. *	155	x	x	x	x	x
	Salem, OR PMSA	385	x	x	x	x	
	Washington County	050	x	x	x	x	
PENNSLYVANIA	<i>state only</i>	040	x	x	x	x	x
	Allegheny County	050	x	x	x	x	x
	Allentown--Bethlehem--Easton, PA MSA	380	x	x	x	x	
	Berks County	050	x	x	x	x	
	Bucks County	050	x	x	x	x	
	Chester County	050	x	x	x	x	
	Dauphin County	050			x	x	
	Delaware County	050	x	x	x	x	
	Erie County	050	x	x	x	x	
	Erie, PA MSA	380	x	x	x	x	
	Harrisburg--Lebanon--Carlisle, PA MSA	380	x	x	x	x	
	Lancaster County	050	x	x	x	x	
	Lancaster, PA MSA	380	x	x	x	x	
	Lehigh County	050	x	x	x	x	
	Luzerne County	050	x	x	x	x	
	Montgomery County	050	x	x	x	x	
	Northampton County	050	x	x	x	x	
	PA Congressional District 1	500	x	x	x	x	
	PA Congressional District 2	500	x	x	x	x	

State	Name	Summary Level					2003
			2000	2001	2002	2003	Change 2000 to 2003
	PA Congressional District 3	500	x	x			
	PA Congressional District 6	500			x	x	
	PA Congressional District 7	500	x	x	x	x	
	PA Congressional District 8	500	x	x	x	x	
	PA Congressional District 11	500			x	x	
	PA Congressional District 13	500	x	x	x	x	
	PA Congressional District 14	500	x	x	x	x	
	PA Congressional District 15	500	x	x	x	x	
	PA Congressional District 16	500	x	x	x	x	
	PA Congressional District 17	500	x	x	x	x	
	PA Congressional District 18	500	x	x	x	x	
	Philadelphia city	160	x	x	x	x	x
	Philadelphia city, Philadelphia County pt.	155	x	x	x	x	x
	Philadelphia County	050	x	x	x	x	x
	Philadelphia, PA--NJ PMSA	385	x	x	x	x	x
	Pittsburgh city	160	x	x	x	x	
	Pittsburgh city, Allegheny County pt.	155	x	x	x	x	
	Pittsburgh, PA MSA	380	x	x	x	x	x
	Reading, PA MSA	380	x	x	x	x	
	Schuylkill County *	001, 050	x	x	x	x	
	Scranton--Wilkes-Barre--Hazleton, PA MSA	380	x	x	x	x	
	Westmoreland County	050	x	x	x	x	
	York County	050	x	x	x	x	
	York, PA MSA	380	x	x	x	x	
RHODE ISLAND	<i>state only</i>	040	x	x	x	x	x
	New London--Norwich, CT--RI MSA	380	x	x			
	Providence County	050	x	x	x	x	

State	Name	Summary Level					2003
			2000	2001	2002	2003	Change 2000 to 2003
	Providence--Fall River--Warwick, RI--MA MSA	380	x	x	x	x	x
	RI Congressional District 1	500	x	x	x	x	
	RI Congressional District 2	500	x	x	x	x	
SOUTH CAROLINA	<i>state only</i>	040	x	x	x	x	x
	Augusta--Aiken, GA--SC MSA	380	x	x	x	x	
	Charleston County	050	x	x	x	x	
	Charleston--North Charleston, SC MSA	380	x	x	x	x	
	Columbia, SC MSA	380	x	x	x	x	
	Greenville County	050	x	x	x	x	
	Greenville--Spartanburg--Anderson, SC MSA	380	x	x	x	x	
	Richland County	050	x	x	x	x	
	Spartanburg County	050			x	x	
SOUTH DAKOTA	<i>state only</i>	040	x	x	x	x	x
	SD Congressional District (at Large)	500	x	x	x	x	
TENNESSEE	<i>state only</i>	040	x	x	x	x	x
	Davidson County	050	x	x	x	x	
	Hamilton County	050	x	x	x	x	
	Johnson City--Kingsport--Bristol, TN--VA MSA	380	x	x	x	x	
	Knox County	050	x	x	x	x	
	Knoxville, TN MSA	380	x	x	x	x	
	Memphis city	160	x	x	x	x	
	Memphis city, Shelby County pt.	155	x	x	x	x	
	Nashville, TN MSA	380	x	x	x	x	x
	Nashville-Davidson (balance)	160	x	x	x	x	
	Nashville-Davidson (balance), Davidson County pt.	155	x	x	x	x	

State	Name	Summary Level					2003
			2000	2001	2002	2003	Change 2000 to 2003
	Sevier County *	001, 050	x	x	x	x	
	Shelby County	050	x	x	x	x	
	TN Congressional District 5	500	x	x	x	x	
	TN Congressional District 9	500	x	x	x	x	
TEXAS	<i>state only</i>	040	x	x	x	x	x
	Arlington city	160	x	x	x	x	
	Arlington city, Tarrant County pt.	155	x	x	x	x	
	Austin city	160	x	x	x	x	
	Austin city, Travis County pt.	155	x	x	x	x	
	Austin--San Marcos, TX MSA	380	x	x	x	x	x
	Baytown city, Harris County pt. *	155		x	x	x	
	Beaumont--Port Arthur, TX MSA	380	x	x	x	x	
	Bexar County	050	x	x	x	x	x
	Brownsville--Harlingen--San Benito, TX MSA	380	x	x	x	x	
	Cameron County	050	x	x	x	x	
	Collin County	050	x	x	x	x	
	Corpus Christi city	160		x	x	x	
	Corpus Christi city, Nueces County pt.	155	x	x	x	x	
	Corpus Christi, TX MSA	380	x	x	x	x	
	Dallas city	160	x	x	x	x	x
	Dallas city, Dallas County pt.	155	x	x	x	x	x
	Dallas County	050	x	x	x	x	x
	Dallas, TX PMSA	385	x	x	x	x	x
	Dallas--Fort Worth, TX CMSA	380	x	x	x	x	x
	Denton County	050	x	x	x	x	
	El Paso city	160	x	x	x	x	
	El Paso city, El Paso County pt.	155	x	x	x	x	

State	Name	Summary Level					2003
			2000	2001	2002	2003	Change 2000 to 2003
	El Paso County	050	x	x	x	x	
	El Paso, TX MSA	380	x	x	x	x	
	Fort Bend-Harris *	001	x	x	x	x	x
	Fort Bend County *	050	x	x	x	x	x
	Fort Worth city	160	x	x	x	x	
	Fort Worth city, Tarrant County pt.	155	x	x	x	x	
	Fort Worth--Arlington, TX PMSA	385	x	x	x	x	x
	Galveston County	050		x	x	x	
	Galveston--Texas City, TX PMSA	385		x	x	x	
	Harris County	050	x	x	x	x	x
	Hidalgo County	050	x	x	x	x	
	Houston city *	160	x	x	x	x	x
	Houston city, Harris County pt. *	155	x	x	x	x	x
	Houston, TX PMSA	385	x	x	x	x	x
	Killeen--Temple, TX MSA	380	x	x	x	x	
	Lubbock County	050				x	
	Lubbock, TX MSA	380				x	
	McAllen--Edinburg--Mission, TX MSA	380	x	x	x	x	
	Montgomery County	050	x	x	x	x	
	Nueces County	050	x	x	x	x	
	Pasadena city *	160	x	x	x	x	
	San Antonio city	160	x	x	x	x	x
	San Antonio city, Bexar County pt.	155	x	x	x	x	x
	San Antonio, TX MSA	380	x	x	x	x	x
	Starr-Zapata *	001	x	x	x	x	
	Sugar Land city *	160			x	x	
	Tarrant County	050	x	x	x	x	x
	Travis County	050	x	x	x	x	

State	Name	Summary Level					2003
			2000	2001	2002	2003	Change 2000 to 2003
	TX Congressional District 3	500	x	x	x	x	
	TX Congressional District 6	500	x	x			
	TX Congressional District 7	500	x	x	x	x	
	TX Congressional District 8	500			x	x	
	TX Congressional District 9	500	x	x	x	x	
	TX Congressional District 10	500	x	x	x	x	
	TX Congressional District 12	500	x	x	x	x	
	TX Congressional District 16	500	x	x	x	x	
	TX Congressional District 18	500	x	x	x	x	
	TX Congressional District 20	500	x	x	x	x	
	TX Congressional District 24	500			x	x	
	TX Congressional District 25	500	x	x	x	x	
	TX Congressional District 26	500	x	x			
	TX Congressional District 29	500	x	x	x	x	
	TX Congressional District 30	500	x	x	x	x	
	TX Congressional District 32	500			x	x	
	Williamson County	050		x	x	x	
UTAH	<i>state only</i>	040	x	x	x	x	x
	Davis County	050				x	
	Provo--Orem, UT MSA	380	x	x	x	x	
	Salt Lake City--Ogden, UT MSA	380	x	x	x	x	x
	Salt Lake County	050	x	x	x	x	
	UT Congressional District 2	500	x	x			
	Utah County	050	x	x	x	x	
VERMONT	<i>state only</i>	040	x	x	x	x	x
	VT Congressional District (at Large)	500	x	x	x	x	

<b>State</b>	<b>Name</b>	<b>Summary Level</b>	<b>2000</b>	<b>2001</b>	<b>2002</b>	<b>2003</b>	<b>2003 Change 2000 to 2003</b>
VIRGINIA	<i>state only</i>	040	x	x	x	x	x
	Chesterfield County	050	x	x	x	x	
	Fairfax County	050	x	x	x	x	
	Henrico County	050	x	x	x	x	
	Johnson City--Kingsport--Bristol, TN--VA MSA	380	x	x	x	x	
	Prince William County	050	x	x	x	x	
	Richmond--Petersburg, VA MSA	380	x	x	x	x	x
	VA Congressional District 2	500	x	x			
	VA Congressional District 8	500	x	x	x	x	
	VA Congressional District 11	500	x	x	x	x	
	Virginia Beach city	050, 160	x	x	x	x	
	Virginia Beach city, Virginia Beach city pt.	155	x	x	x	x	
	WASHINGTON	<i>state only</i>	040	x	x	x	x
Clark County		050	x	x	x	x	
King County		050	x	x	x	x	x
Pierce County		050	x	x	x	x	
Seattle city		160	x	x	x	x	
Seattle city, King County pt.		155	x	x	x	x	
Seattle--Bellevue--Everett, WA PMSA		385	x	x	x	x	x
Snohomish County		050	x	x	x	x	
Spokane County		050	x	x	x	x	
Spokane, WA MSA		380	x	x	x	x	
Tacoma, WA PMSA		385	x	x	x	x	
WA Congressional District 7		500	x	x	x	x	
WA Congressional District 8		500	x	x	x	x	
Yakima County *		050	x	x	x	x	

<b>State</b>	<b>Name</b>	<b>Summary Level</b>	<b>2000</b>	<b>2001</b>	<b>2002</b>	<b>2003</b>	<b>2003 Change 2000 to 2003</b>
	Yakima city *	160	x	x	x	x	
WEST VIRGINIA	<i>state only</i>	040	x	x	x	x	x
WISCONSIN	<i>state only</i>	040	x	x	x	x	x
	Appleton--Oshkosh--Neenah, WI MSA	380	x	x	x	x	
	Dane County	050	x	x	x	x	
	Madison, WI MSA	380	x	x	x	x	
	Milwaukee city	160	x	x	x	x	
	Milwaukee city, Milwaukee County pt.	155	x	x	x	x	
	Milwaukee County	050	x	x	x	x	
	Milwaukee--Waukesha, WI PMSA	385	x	x	x	x	x
	Waukesha County	050	x	x	x	x	
	WI Congressional District 4	500	x	x	x	x	
	WI Congressional District 5	500	x	x			
WYOMING	<i>state only</i>	040	x	x	x	x	x
	WY Congressional District (at Large)	500	x	x	x	x	
Multi-state areas	Augusta--Aiken, GA--SC MSA	380	x	x	x	x	
	Boston, MA--NH PMSA	385	x	x	x	x	x
	Boston--Worcester--Lawrence, MA--NH--ME--CT CMSA	380	x	x	x	x	x
	Davenport--Moline--Rock Island, IA--IL MSA	380	x	x	x	x	
	Johnson City--Kingsport--Bristol, TN--VA MSA	380	x	x	x	x	
	Kansas City, MO--KS MSA	380	x	x	x	x	x
	Lawrence, MA--NH PMSA	385	x	x	x	x	
	Lowell, MA--NH PMSA	385	x	x	x	x	



<b>State</b>	<b>Name</b>	<b>Summary Level</b>	<b>2000</b>	<b>2001</b>	<b>2002</b>	<b>2003</b>	<b>2003 Change 2000 to 2003</b>
	New London--Norwich, CT--RI MSA	380	x	x			
	Philadelphia, PA--NJ PMSA	385	x	x	x	x	x
	Providence--Fall River--Warwick, RI--MA MSA	380	x	x	x	x	x
	St. Louis, MO--IL MSA	380	x	x	x	x	x
	Worcester, MA--CT PMSA	385	x	x	x	x	

## Equivalent Geographies

Many geographic areas appear in the 2003 American Community Survey under a variety of geographic summary levels. These “equivalent” geographies are grouped together in the list below.

<u>State</u>	<u>Name</u>	<u>Summary Level</u>	
ALASKA	Alaska	040	
	AK Congressional District (at Large)	500 - Cong. District	
	Anchorage Municipality	050	
	Anchorage municipality	160	
	Anchorage municipality, Anchorage Municipality pt.	155	
	Anchorage, AK MSA	380	
ARIZONA	Mesa city	160	
	Mesa city, Maricopa County pt.	155	
	Phoenix city	160	
	Phoenix city, Maricopa County pt.	155	
	Pima County	050	
	Tucson, AZ MSA	380	
	Tucson city	160	
	Tucson city, Pima County pt.	155	
	CALIFORNIA	Anaheim city	160
		Anaheim city, Orange County pt.	155
Fresno city		160	
Fresno city, Fresno County pt.		155	
Kern County		050	
Bakersfield, CA MSA		380	
Long Beach city		160	
Long Beach city, Los Angeles County pt.		155	
Los Angeles County		050	
Los Angeles--Long Beach, CA PMSA		385	
Los Angeles city		160	
Los Angeles city, Los Angeles County pt.		155	
Monterey County		050	
Salinas, CA MSA		380	

<u>State</u>	<u>Name</u>	<u>Summary Level</u>
	Oakland city	160
	Oakland city, Alameda County pt.	155
	Orange County	050
	Orange County, CA PMSA	385
	Riverside city	160
	Riverside city, Riverside County pt.	155
	Sacramento city	160
	Sacramento city, Sacramento County pt.	155
	San Diego city	160
	San Diego city, San Diego County pt.	155
	San Diego County	050
	San Diego, CA MSA	380
	San Joaquin County	050
	Stockton--Lodi, CA MSA	380
	San Jose city	160
	San Jose city, Santa Clara County pt.	155
	San Francisco County	050
	San Francisco city	160
	San Francisco city, San Francisco County pt	155
	Santa Barbara County	050
	Santa Barbara--Santa Maria--Lompoc, CA MSA	380
	Santa Clara County	050
	San Jose, CA PMSA	385
	Santa Ana city	160
	Santa Ana city, Orange County pt.	155
	Sonoma County	050
	Santa Rosa, CA PMSA	385
	Stanislaus County	050
	Modesto, CA MSA	380
	Stockton city	160
	Stockton city, San Joaquin County pt.	155
	Tulare County	050
	Visalia--Tulare--Porterville, CA MSA	380

<u>State</u>	<u>Name</u>	<u>Summary Level</u>
	Ventura County	050
	Ventura, CA PMSA	385
COLORADO	Boulder County	050
	Boulder--Longmont, CO PMSA	385
	Colorado Springs city	160
	Colorado Springs city, El Paso County pt.	155
	Denver city	160
	Denver city, Denver County pt.	155
	Denver County	050
	El Paso County	050
	Colorado Springs, CO MSA	380
DELAWARE	Delaware	040
	DE Congressional District (at Large)	500 - Cong. District
DISTRICT OF COLUMBIA	DC Delegate District (at Large)	500 - Cong. District
	District of Columbia	050
	Washington city	160
	Washington city, District of Columbia pt.	155
FLORIDA	Brevard County	050
	Melbourne--Titusville--Palm Bay, FL MSA	380
	Broward County	050
	Fort Lauderdale, FL PMSA	385
	Jacksonville city	160
	Jacksonville city, Duval County pt.	155
	Lee County	050
	Fort Myers--Cape Coral, FL MSA	380
	Miami city	160
	Miami city, Miami-Dade County pt.	155
	Miami-Dade County	050
	Miami, FL PMSA	385
	Palm Beach County	050
	West Palm Beach--Boca Raton, FL MSA	380
	Polk County	050
	Lakeland--Winter Haven, FL MSA	380
	St. Petersburg city	160
	St. Petersburg city, Pinellas County pt.	155

<u>State</u>	<u>Name</u>	<u>Summary Level</u>
	Tampa city	160
	Tampa city, Hillsborough County pt.	155
HAWAII	Honolulu CDP	160
	Honolulu CDP, Honolulu County pt.	155
	Honolulu County	050
	Honolulu, HI MSA	380
ILLINOIS	Chicago city	060
	Chicago city	160
	Chicago city, Cook County pt.	155
INDIANA	Indianapolis city (balance)	160
	Indianapolis city (balance), Marion County pt.	155
	St. Joseph County	050
	South Bend, IN MSA	380
KANSAS	Wichita city	060
	Wichita city	160
	Wichita city, Sedgwick County pt.	155
LOUISIANA	New Orleans city	160
	New Orleans city, Orleans Parish pt.	155
	Orleans Parish	050
MARYLAND	Baltimore city	050
	Baltimore city	160
	Baltimore city, Baltimore city pt.	155
MASSACHUSETTS	Boston city	060
	Boston city	160
	Boston city, Suffolk County pt.	155
	Springfield city	060
	Springfield city	160
MICHIGAN	Detroit city	060
	Detroit city	160
	Detroit city, Wayne County pt.	155
	Genesee County	050
	Flint, MI PMSA	385
MINNESOTA	Minneapolis city	060
	Minneapolis city	160
	Minneapolis city, Hennepin County pt.	155

<u>State</u>	<u>Name</u>	<u>Summary Level</u>
	St. Paul city	060
	St. Paul city	160
	St. Paul city, Ramsey County pt.	155
MISSOURI	St. Louis city	050
	St. Louis city	060
	St. Louis city	160
	St. Louis city, St. Louis city pt.	155
MONTANA	Montana	040
	MT Congressional District (at Large)	500 - Cong. District
NEBRASKA	Omaha city	060
	Omaha city	160
	Omaha city, Douglas County pt.	155
NEVADA	Las Vegas city	160
	Las Vegas city, Clark County pt.	155
	Washoe County	050
	Reno, NV MSA	380
NEW JERSEY	Mercer County	050
	Trenton, NJ PMSA	385
	Hudson County	050
	Jersey city, NJ PMSA	385
	Newark city	060
	Newark city	160
	Newark city, Essex County pt.	155
NEW MEXICO	Albuquerque city	160
	Albuquerque city, Bernalillo County pt.	155
NEW YORK	Bronx borough	060
	Bronx County	050
	New York city, Bronx County pt.	155
	Brooklyn borough	060
	Kings County	050
	New York city, Kings County pt.	155
	Buffalo city	060
	Buffalo city	160
	Buffalo city, Erie County pt.	155
	Dutchess County	050
	Dutchess County, NY PMSA	385

<u>State</u>	<u>Name</u>	<u>Summary Level</u>
	Manhattan borough	060
	New York city, New York County pt.	155
	New York County	050
	New York city, Queens County pt.	155
	Queens borough	060
	Queens County	050
	New York city, Richmond County pt.	155
	Richmond County	050
	Staten Island borough	060
NORTH CAROLINA	Charlotte city	160
	Charlotte city, Mecklenburg County pt.	155
	Cumberland County	050
	Fayetteville, NC MSA	380
	Raleigh city	160
	Raleigh city, Wake County pt.	155
NORTH DAKOTA	North Dakota	040
	ND Congressional District (at Large)	500 - Cong. District
OHIO	Butler County	050
	Hamilton--Middletown, OH PMSA	385
	Cincinnati city	060
	Cincinnati city	160
	Cincinnati city, Hamilton County pt.	155
	Cleveland city	060
	Cleveland city	160
	Cleveland city, Cuyahoga County pt.	155
	Columbus city	060
	Columbus city, Franklin County pt.	155
	Toledo city	060
	Toledo city	160
	Toledo city, Lucas County pt.	155
OREGON	Lane County	050
	Eugene--Springfield, OR MSA	380
PENNSYLVANIA	Berks County	050
	Reading, PA MSA	380

<u>State</u>	<u>Name</u>	<u>Summary Level</u>
	Erie County	050
	Erie, PA MSA	380
	Lancaster County	050
	Lancaster, PA MSA	380
	Philadelphia city	060
	Philadelphia city	160
	Philadelphia city, Philadelphia County pt.	155
	Philadelphia County	050
	Pittsburgh city	060
	Pittsburgh city	160
	Pittsburgh city, Allegheny County pt.	155
	York County	050
	York, PA MSA	380
SOUTH DAKOTA	South Dakota	040
	SD Congressional District (at Large)	500 - Cong. District
TENNESSEE	Memphis city	160
	Memphis city, Shelby County pt.	155
	Nashville-Davidson (balance)	160
	Nashville-Davidson (balance), Davidson County pt.	155
TEXAS	Arlington city	160
	Arlington city, Tarrant County pt.	155
	Corpus Christi city	160
	Corpus Christi city, Nueces County pt.	155
	Cameron County	050
	Brownsville--Harlingen--San Benito, TX MSA	380
	El Paso city	160
	El Paso city, El Paso County pt.	155
	El Paso County	050
	El Paso, TX MSA	380
	Fort Worth city	160
	Fort Worth city, Tarrant County pt.	155
	Galveston County	050
	Galveston--Texas City, TX PMSA	385



<u>State</u>	<u>Name</u>	<u>Summary Level</u>
	Hidalgo County	050
	McAllen--Edinburg--Mission, TX MSA	380
	San Antonio city	160
	San Antonio city, Bexar County pt.	155
UTAH	Utah County	050
	Provo--Orem, UT MSA	380
VERMONT	Vermont	040
	VT Congressional District (at Large)	500 - Cong. District
VIRGINIA	Virginia Beach city	050
	Virginia Beach city	160
	Virginia Beach city, Virginia Beach city pt.	155
WASHINGTON	Pierce County	050
	Tacoma, WA PMSA	385
	Seattle city	160
	Seattle city, King County pt.	155
	Spokane County	050
	Spokane, WA MSA	380
WISCONSIN	Dane County	050
	Madison, WI MSA	380
	Milwaukee city	060
	Milwaukee city	160
	Milwaukee city, Milwaukee County pt.	155
WYOMING	Wyoming	040
	WY Congressional District (at Large)	500 - Cong. District

## **Glossary of Geographic Terms**

**Congressional district** – An area established by State officials or the courts for the purpose of electing a person to the U.S. House of Representatives. Within each State, these areas must contain, as nearly as possible, an equal number of inhabitants. The number of Congressional districts in each State may change after each decennial census, and the boundaries may be changed more than once during a decade.

**Consolidated metropolitan statistical area (CMSA)** – A geographic entity defined by the Federal Office of Management and Budget (OMB) for use by Federal statistical agencies. An area becomes a CMSA if it meets the requirements to qualify as a metropolitan statistical area (MSA), has a population of 1,000,000 or more, if component parts are recognized as primary statistical metropolitan areas (PMSAs), and local opinion favors the designation. Whole counties are components of CMSAs outside of New England, where they are composed of cities and towns instead.

**County** – A type of governmental unit that is the primary legal subdivision of every State except Alaska and Louisiana; also, a type of functioning MCD found in American Samoa. The county equivalent in Alaska is called a Municipality, while the county equivalent in Louisiana is called a Parrish.

**County subdivision** – A legal or statistical division of a county recognized by the Census Bureau for data presentation.

**Metropolitan statistical area (MSA)** – A geographic entity, defined by the Federal OMB for use by Federal statistical agencies, based on the concept of a core area with a large population nucleus, plus adjacent communities having a high degree of economic and social integration with that core. Qualification of an MSA requires the presence of a city with 50,000 or more inhabitants, or the presence of a UA and a total population of at least 100,000 (75,000 in New England). The county or counties containing the largest city and surrounding densely settled territory are central counties of the MSA. Additional outlying counties qualify to be included in the MSA by meeting certain other criteria of metropolitan character, such as a specified minimum population density or percentage of the population that is urban. MSAs in New England are defined in terms of cities and towns, following rules concerning commuting and population density.

**Minor Civil Division (MCD)** – A type of governmental unit that is the primary legal subdivision of a county in 28 States, created to govern or administer an area rather than a specific population. The several types of MCDs are identified in terms such as town, township, and district, and include both functioning and nonfunctioning governmental units. Many MCDs represent local, general-purpose governmental units, which makes them required areas for presentation of decennial census data. *See also county subdivision.*

**Place** – A concentration of population either legally bounded as an incorporated place, or identified by the Census Bureau as a Census designated place.

Incorporated Place – All incorporated places recognized legally as in existence under the laws of their respective states as cities, boroughs, towns, and villages, with the following exceptions: the towns in the New England states, New York, and Wisconsin, and the boroughs in New York are recognized as minor civil divisions for census purposes; the boroughs in Alaska are county equivalents.

Census Designated Place (CDP) – A statistical entity, defined for each decennial census according to Census Bureau guidelines, comprising a densely settled concentration of population that is not within an incorporated place, but is locally identified by a name. CDPs are delineated cooperatively by state and local officials and the Census Bureau, following Census Bureau guidelines. These entities were called unincorporated places for the 1940 through 1970 censuses.

**Primary metropolitan statistical area (PMSA)** – A geographic entity defined by the Federal OMB for use by Federal statistical agencies. If an area meets the requirements to qualify as a metropolitan statistical area (MSA) and has a population of one million or more, two or more PMSAs may be defined within it if statistical criteria are met and local opinion is in favor. A PMSA consists of a large urbanized county, or a cluster of such counties (cities and towns in New England) that have substantial commuting interchange. When one or more PMSAs have been recognized, the balance of the original, larger area becomes an additional PMSA; the larger area of which they are components then is designated a consolidated metropolitan statistical area (CMSA).

**State** – A type of governmental unit that is the primary legal subdivision of the United States; a functioning county equivalent in Palau, where it also serves as a nonfunctioning MCD.

For more information about the Census Bureau's statistical areas, geographic concepts or terminology, please reference the Geographic Areas Reference Manual (<http://www.census.gov/geo/www/garm.html>), published by the U.S. Census Bureau.