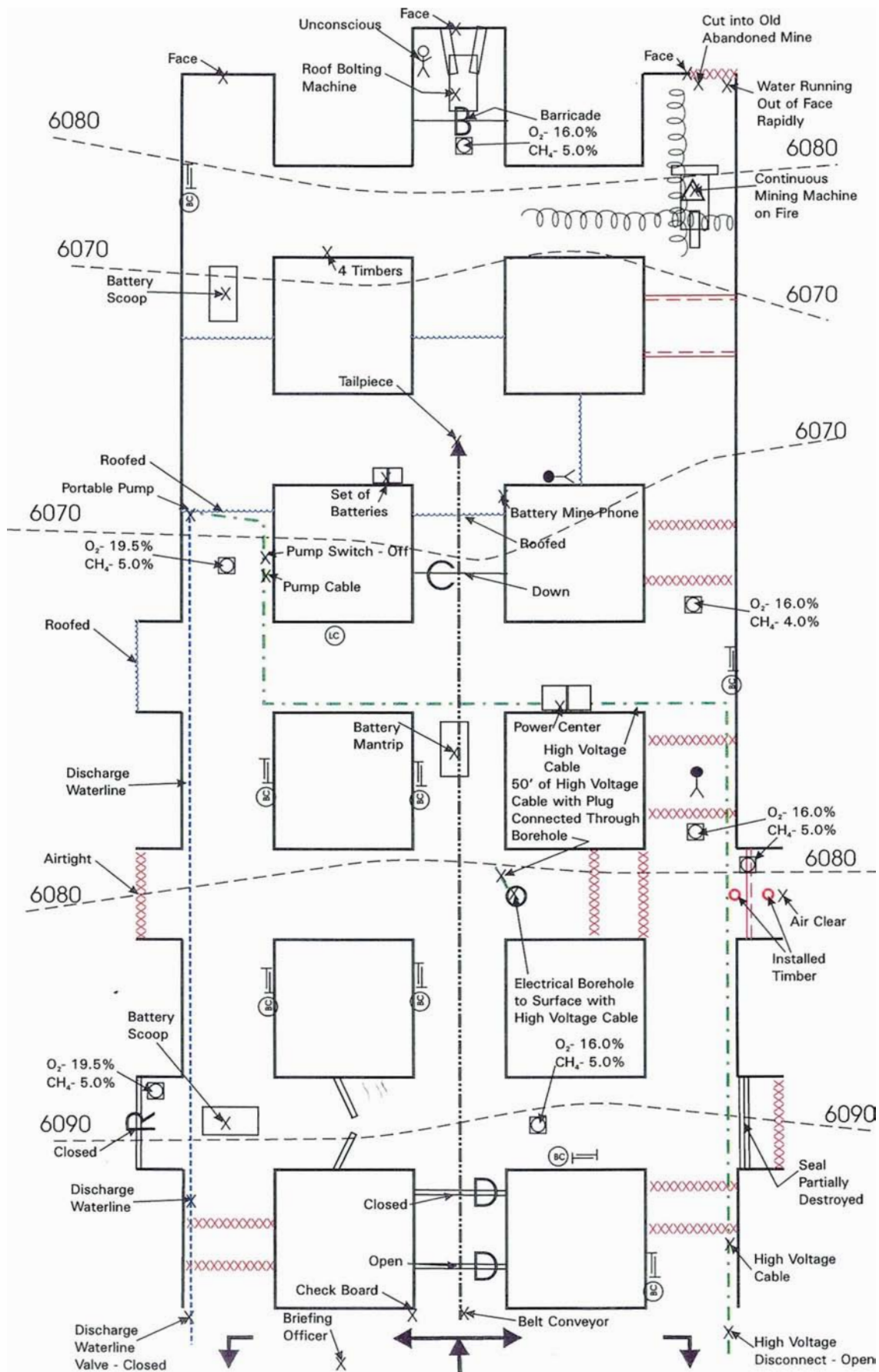
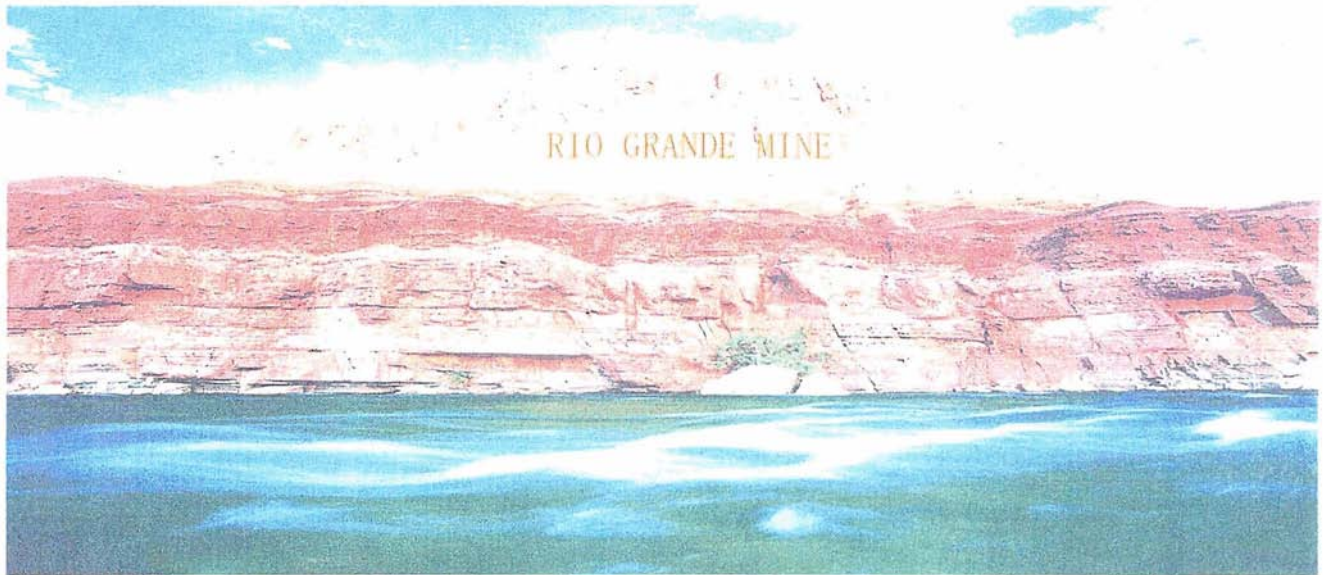


PRICE, UT MINE RESCUE CONTEST - 2005

4th RIGHT





I am _____, Superintendent of the Rio Grande Mine. This mine is ventilated with two fans: an exhausting fan located on the surface and a bleeder fan located in the No. 2 entry of the future bleeders. The fans cannot be reversed.

At approximately 9:00 a.m., conspec personnel received a call from the section foreman in 4th Right section stating that there was a problem with methane and the continuous mining machine. During this discussion, communication was lost with the foreman. Shortly thereafter an explosion occurred in the mine; and conspec personnel reported high concentrations of methane.

Several miners were able to escape but were severely burnt and injured and have been taken to area hospitals. They were unable to provide any useful information about the explosion. Attempts to contact remaining personnel in the 4th Right development section have been unsuccessful. Three miners are unaccounted for.

Prior to your team's arrival, Mine Rescue Team "A" explored the 5th Right future bleeder entries and recovery rooms adjacent to 4th Right section. They reported that they encountered water roofed and caved areas adjacent to 4th Right.

Mine Rescue Team "B" explored East Mains, 3rd Right and connecting entries with 4th Right. They encountered water, unsafe roof and caved areas.

STATEMENT (cont.)

While installing temporary supports in the unsafe roof located in the No. 1 entry adjacent to 4th Right, two of the team members became ill and the team retreated to the surface.

The mine has one continuous miner section and one future longwall section. A mine map, current to yesterday's production, is available for your team's review. Mine floor elevation contours are shown on the map.

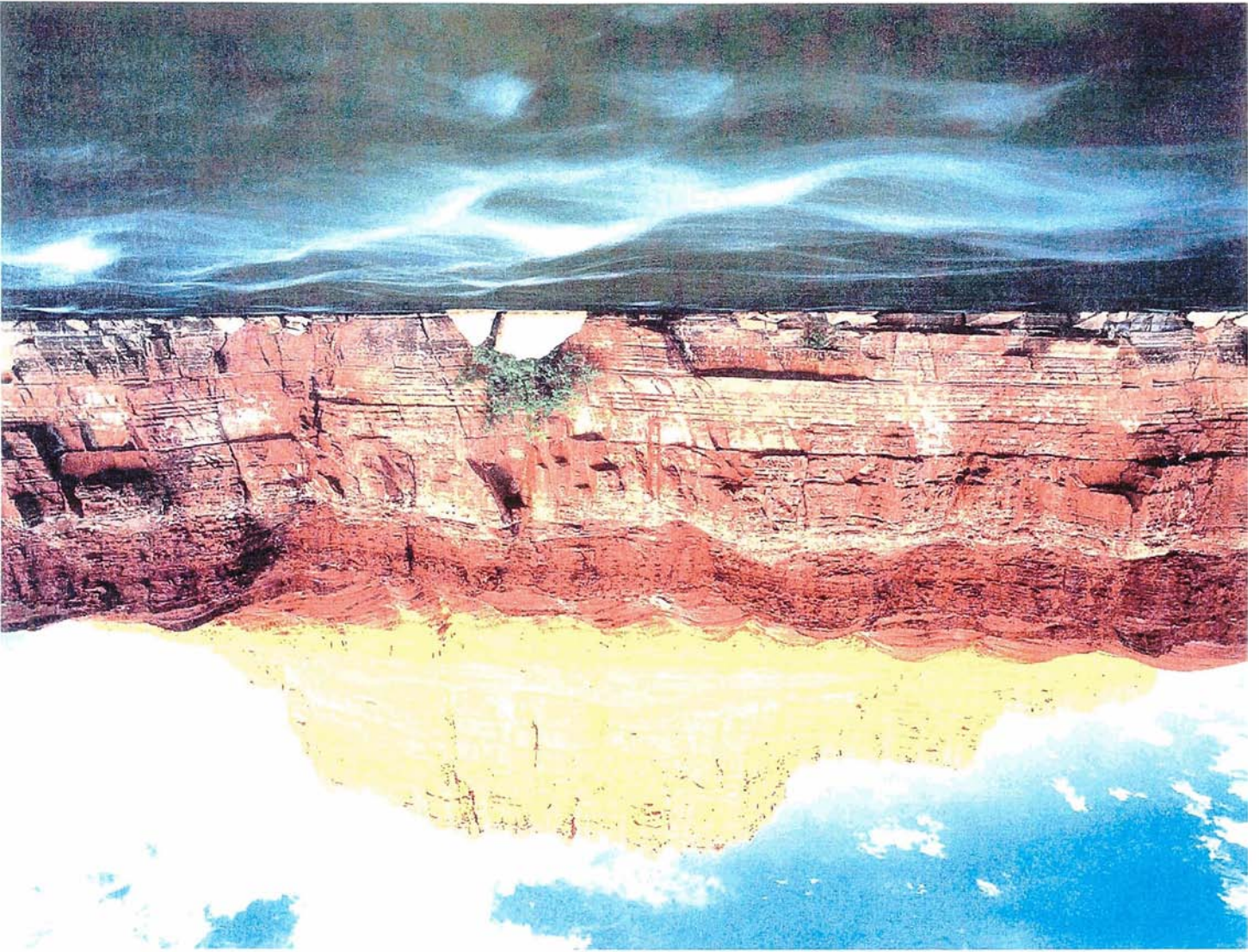
The mine roof is laminated shale causing adverse roof conditions throughout the mine. The entries average approximately eight feet high.

This mine has problems with excessive water seeping from the mine floor and mine roof. Surface de-watering systems are installed at the top of a 10 inch borehole in the No. 3 entry of the connecting entries between 3rd and 4th Right.

All electrical power in by the mine portals has been de-energized, locked out and is guarded. Underground electrical power can be energized at the surface substation by requesting permission from the superintendent. The superintendent will notify your briefing officer of any changes in mine conditions.

A fresh air base was established at the mouth of 4th Right. Numerous ventilation changes were made on 4th Right due to significant damage to ventilation structures.

All MSHA, State, and Labor representatives have been notified and are present. Medical personnel and back-up mine rescue teams are present. Mine maps and written instructions will be provided when you are ready to work.



Good Luck!

•Account for all missing persons.

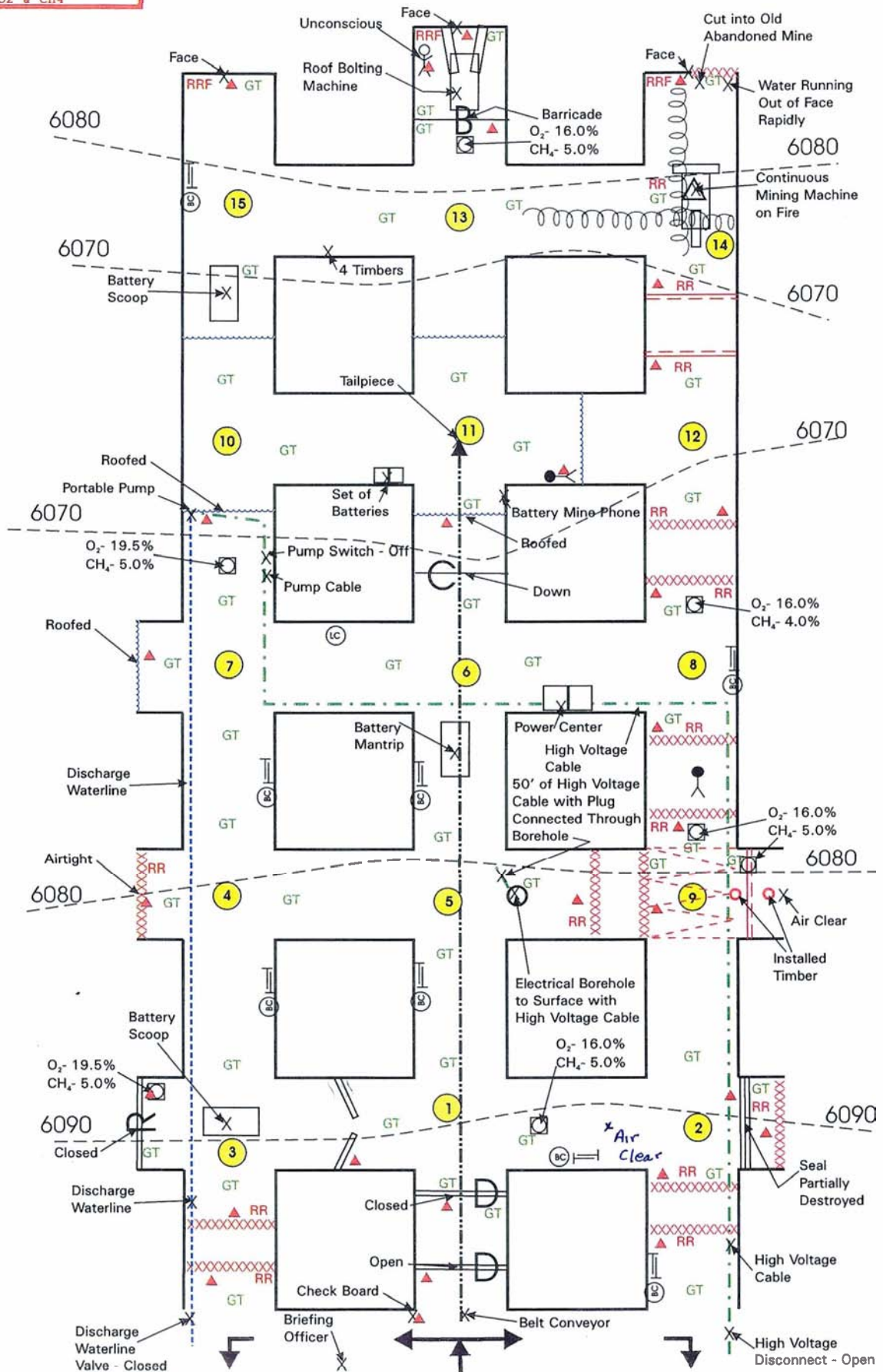
•Explore all accessible areas in a systematic manner, if it can be done safely.

Rio Grande Mine
Problem

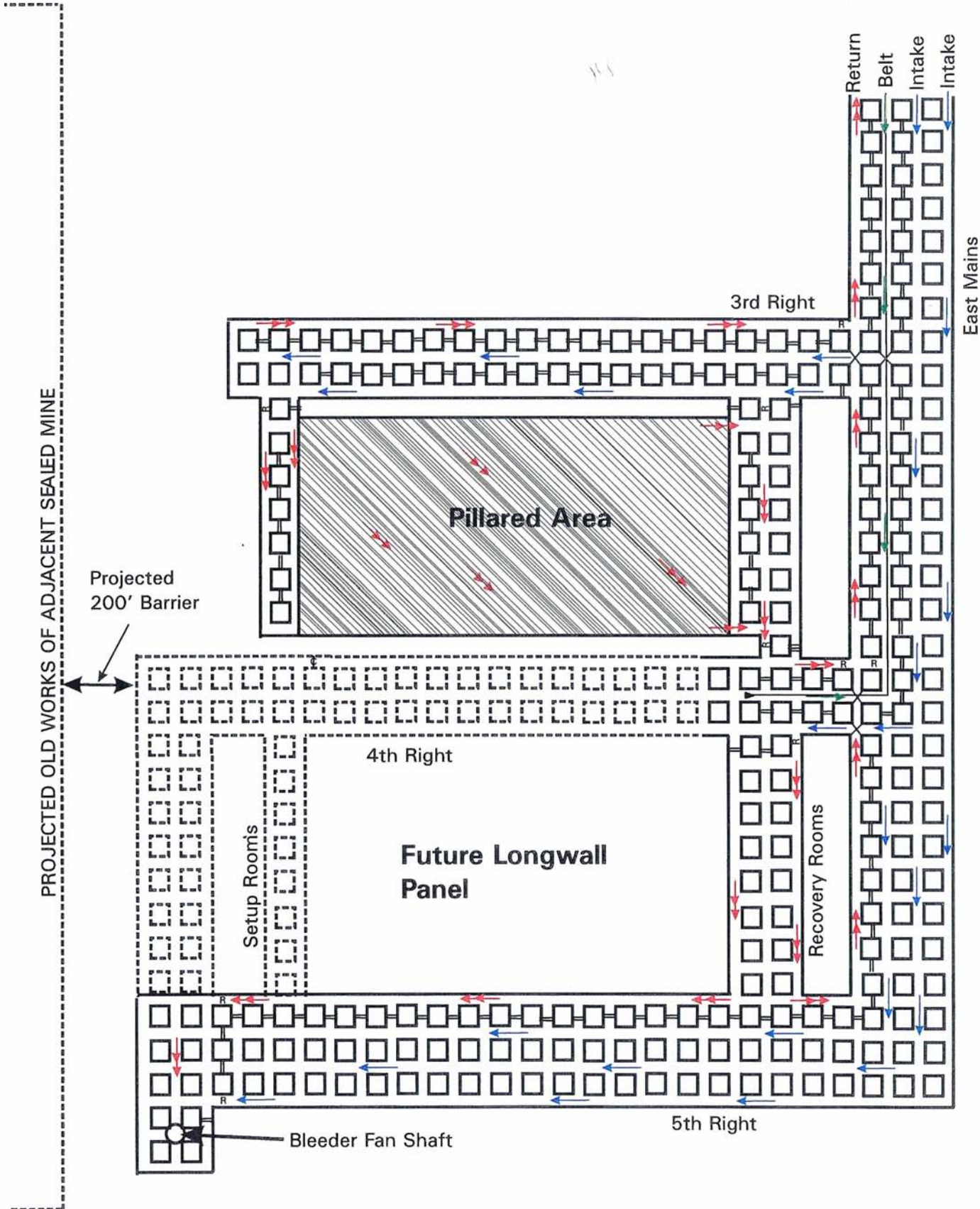
PRICE, UT MINE RESCUE CONTEST - 2005

4th RIGHT

INDEX	
RR	- ROOF & RIB TEST
RRF	- ROOF, RIB & FACE TEST
△	- DATE & INITIALS
GT	- GAS TESTS FOR CO ₂ , O ₂ & CH ₄

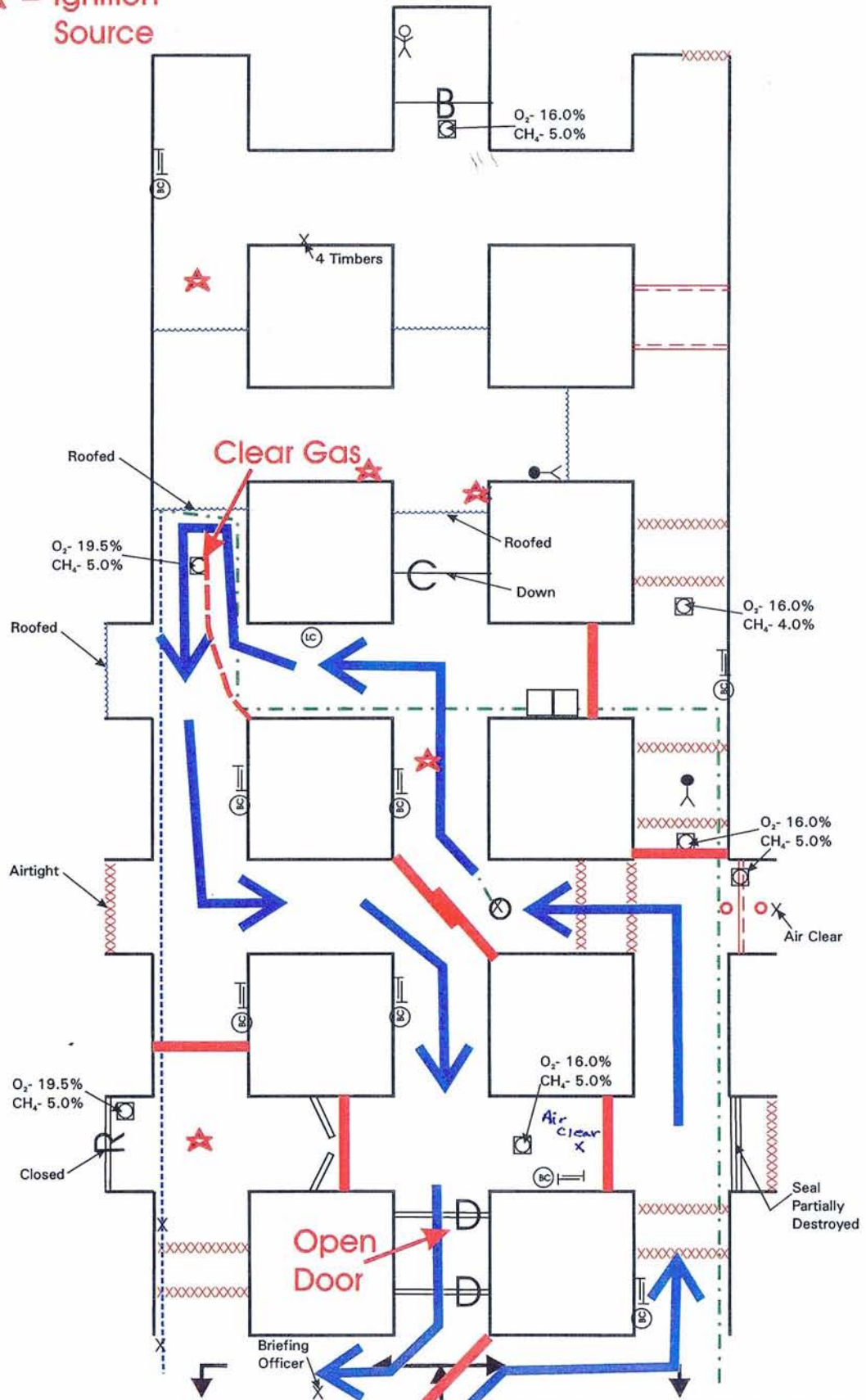


PRICE, UT MINE RESCUE CONTEST - 2005 PRIOR VENTILATION



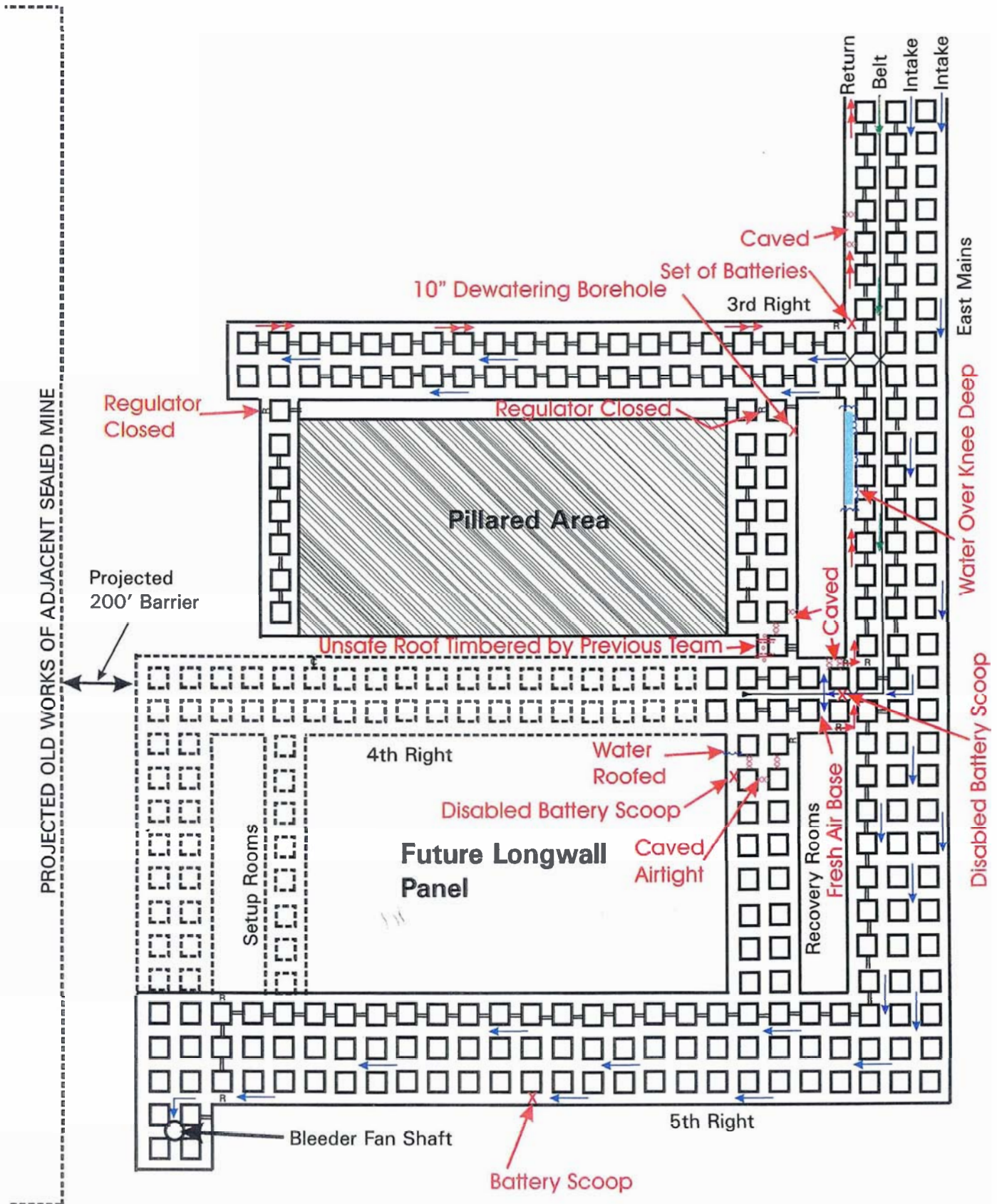
PRICE, UT MINE RESCUE CONTEST - 2005 4th RIGHT STEP 1 VENTILATION

★ = Ignition Source



Close Outby Regulator
in No. 3 Entry

PRICE, UT MINE RESCUE CONTEST - 2005 CONDITIONS AFTER INITIAL EXPLORATION

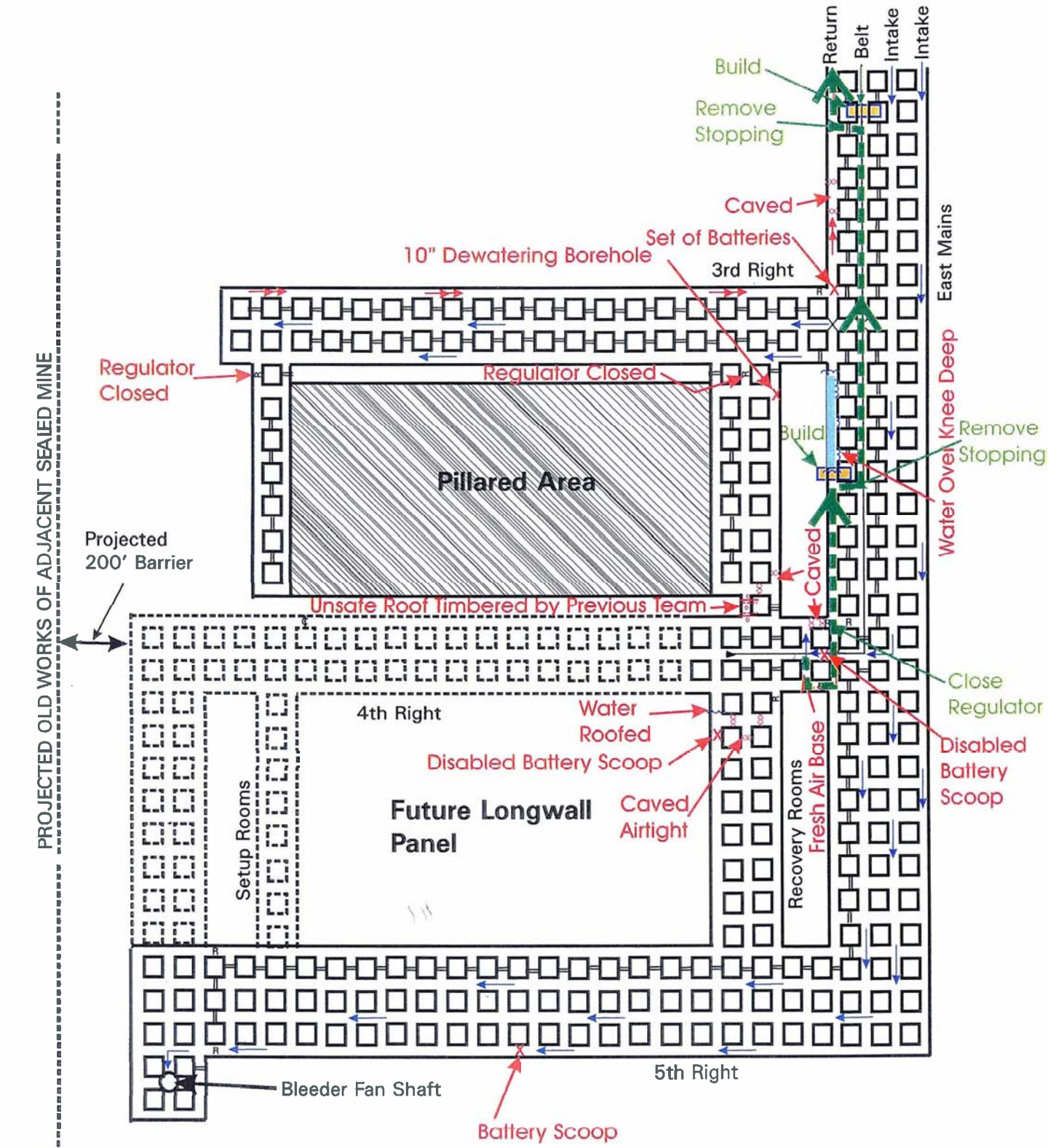


PRICE, UT MINE RESCUE CONTEST - 2005

CONDITIONS AFTER INITIAL EXPLORATION

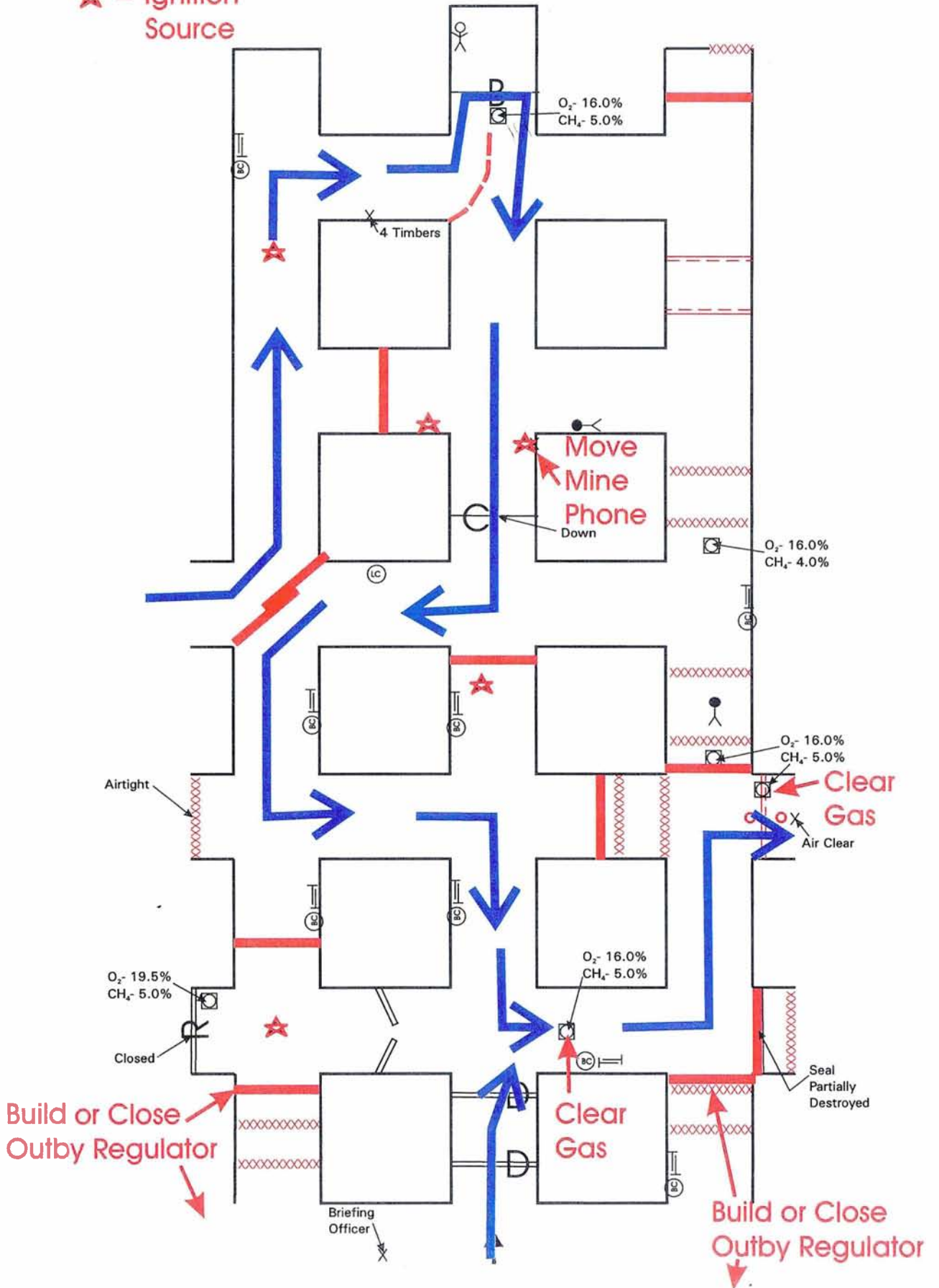
STEP 1 OUTBY VENTILATION CHANGES

BUILD STOPPINGS AT LOCATIONS MARKED



PRICE, UT MINE RESCUE CONTEST - 2005 4th RIGHT STEP 2 VENTILATION

★ = Ignition Source

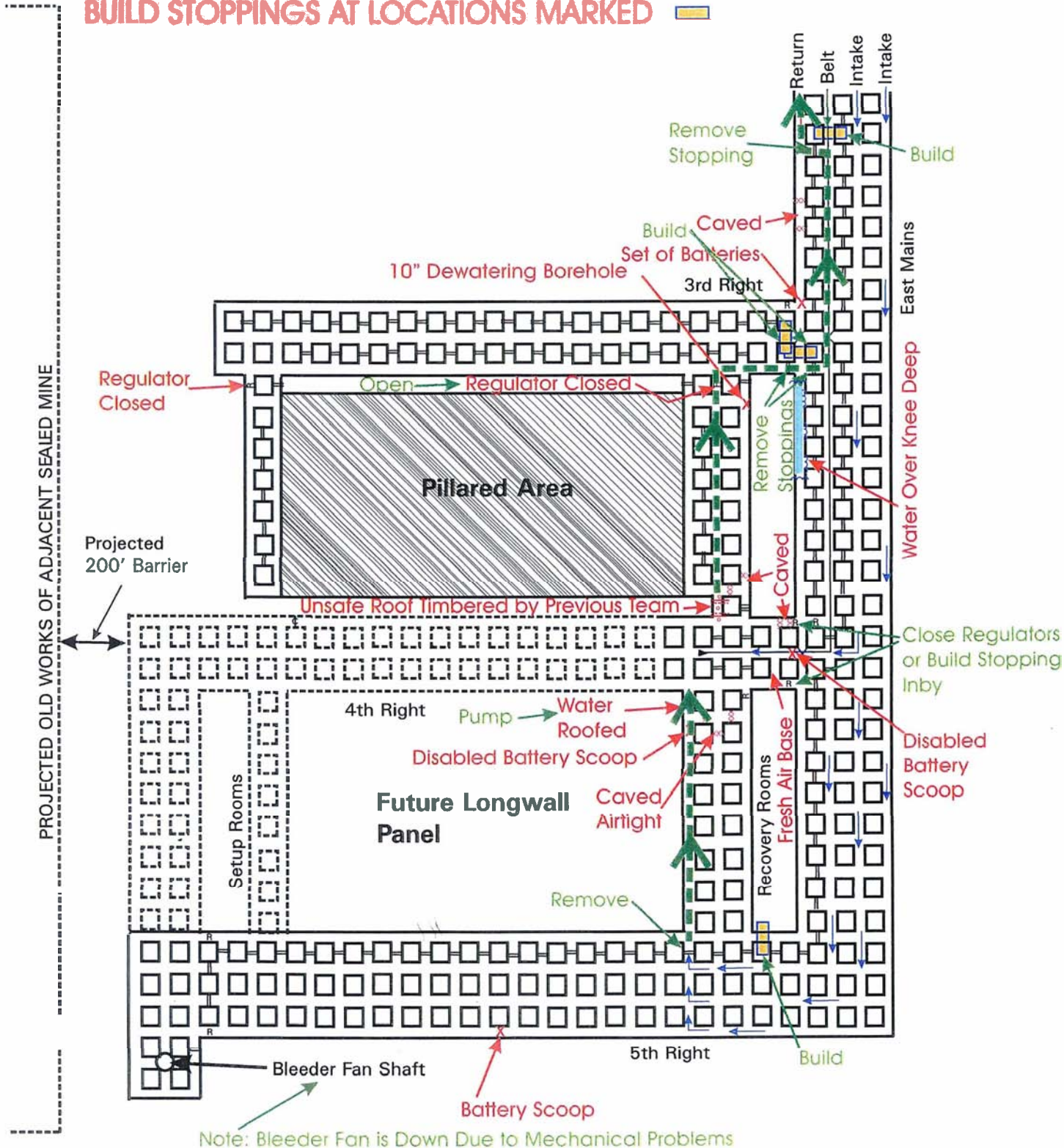


PRICE, UT MINE RESCUE CONTEST - 2005

CONDITIONS AFTER INITIAL EXPLORATION

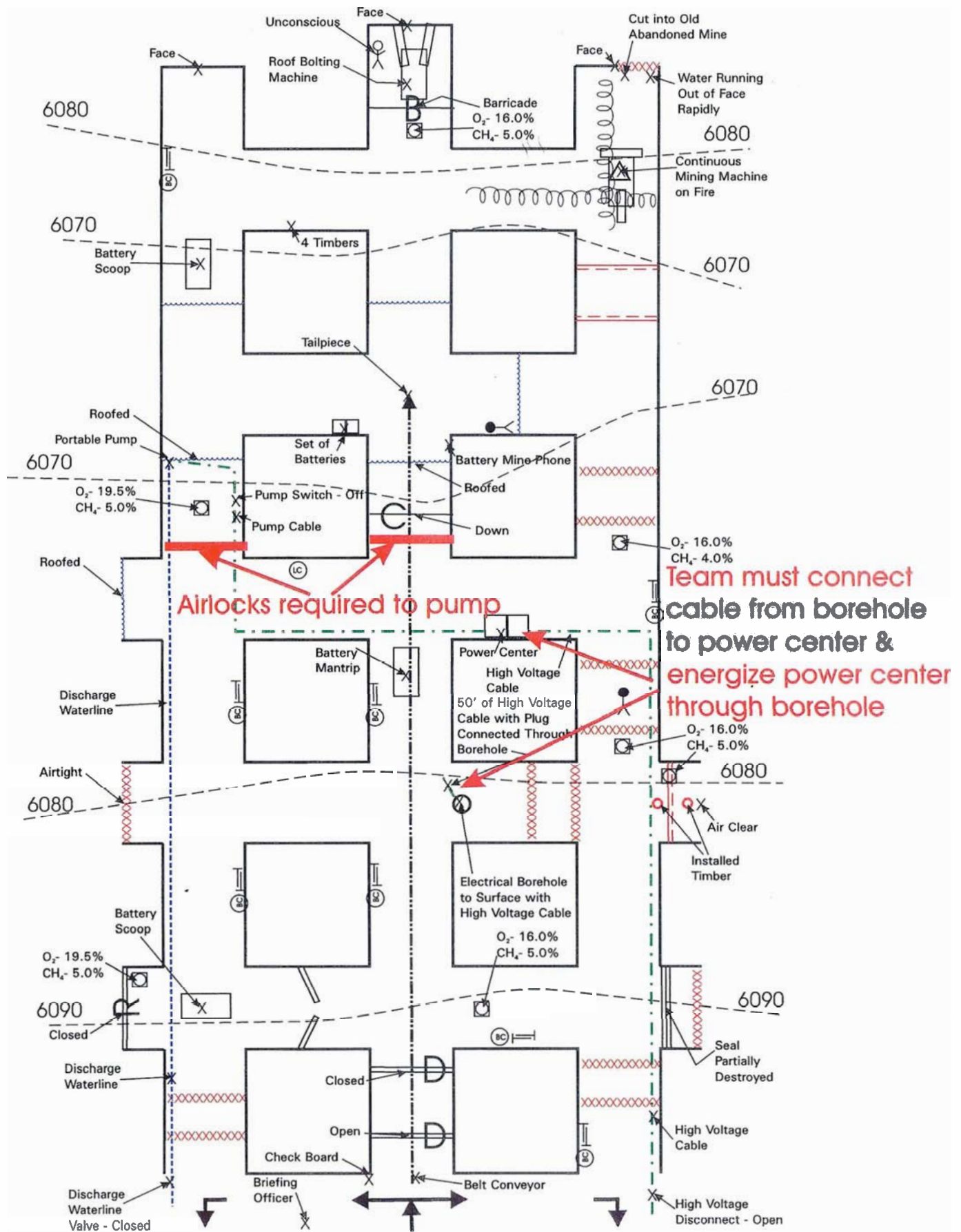
STEP 2 OUTBY VENTILATION CHANGES

BUILD STOPPINGS AT LOCATIONS MARKED 



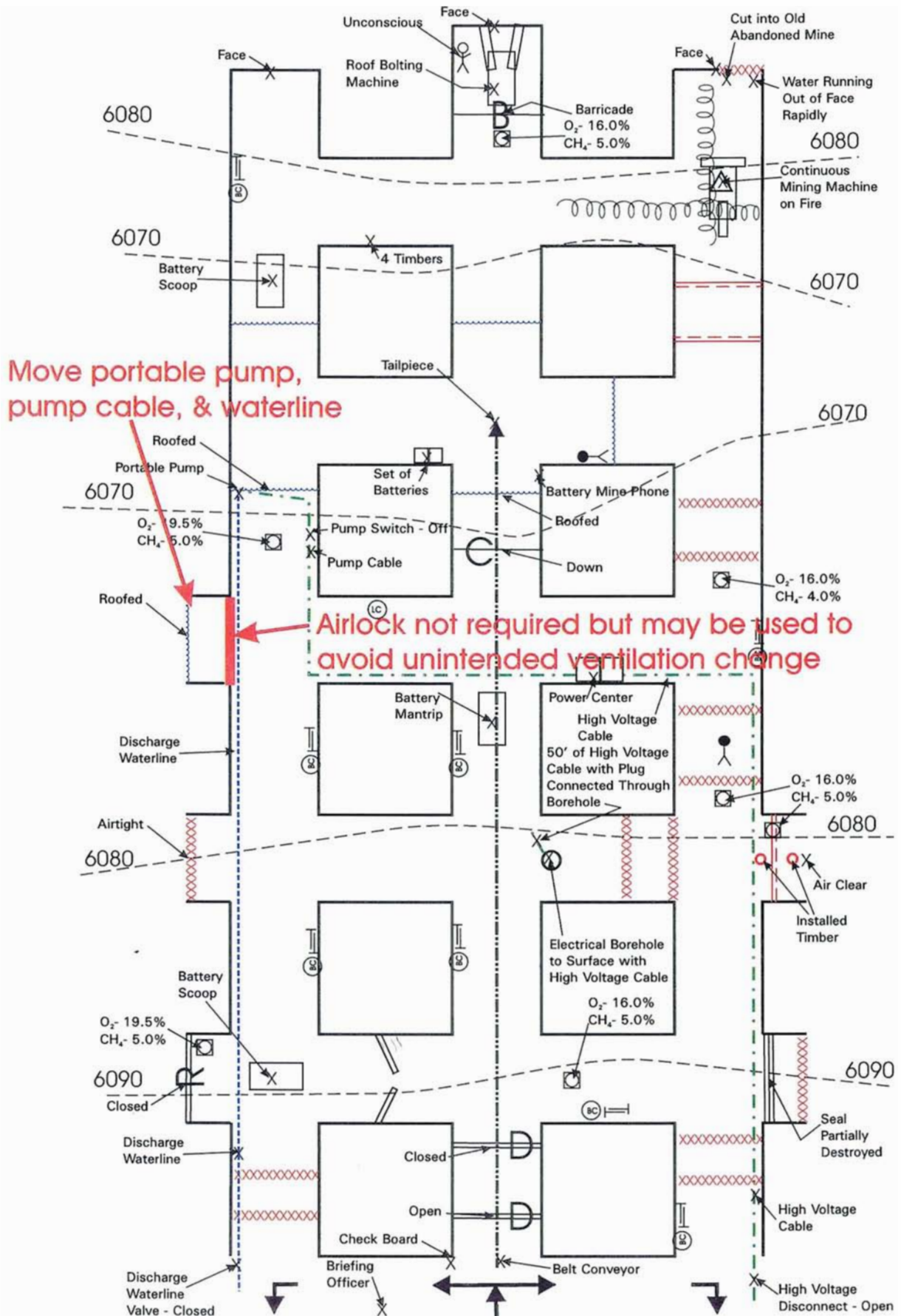
PRICE, UT MINE RESCUE CONTEST - 2005

4th RIGHT PUMPING/AIRLOCKS



PRICE, UT MINE RESCUE CONTEST - 2005

4th RIGHT 2ND PUMPING



TO BRIEFING OFFICER

Notice No. 1

(8 minutes into the problem)

- **The bleeder fan is experiencing loud noises during operation.**
- **The maintenance foreman is investigating.**

Notice No. 2

(12 minutes into the problem)

- **The maintenance foreman has informed me that the bearings on the bleeder fan are going out.**

Notice No. 3

(18 minutes into the problem)

- **The maintenance foreman has informed me that the bearings have been completely destroyed on the bleeder fan and the fan has been shut down.**
- **She informed me that it will be a major job to repair the fan and it will take several days.**

Notice No. 4

(90 minutes into the problem)

- **We collected a bag air sample at the main return fan and have received the following results:
4% CH₄, 16% O₂ and 9 ppm CO**

Notice No. 5

(150 minutes into the problem)

- **We have received the results of another bag sample taken at the return fan and the results are as follows:
5.8% methane, 16% O₂ and 150 ppm CO**