



U.S. DEPARTMENT OF
ENERGY

GOLDEN FIELD OFFICE

Planning and Construction at NREL

Public Meeting
12 November 2008

DOE's South Table Mountain Site



Primary NREL Locations





U.S. DEPARTMENT OF
ENERGY

GOLDEN FIELD OFFICE

Mesa Top Photovoltaic (Solar) Array Project

- 750 KW ground mounted single axis tracking system
- Generate 1,200 MWhrs of electricity to South Table Mountain site
- Producing power by December 1st, 2008
- Power purchase agreement



U.S. DEPARTMENT OF
ENERGY

GOLDEN FIELD OFFICE

Environmental Assessment Activities

- Required by NEPA
- Assessment of “federal actions”:
 - South Table Mountain infrastructure
 - Energy Systems Integration Facility
 - South access road possibilities
- Draft expected for public review in January 2009
- Golden Field Office website: eere.energy.gov/golden/



U.S. DEPARTMENT OF
ENERGY

GOLDEN FIELD OFFICE

South Table Mountain Build-out Plan





U.S. DEPARTMENT OF
ENERGY

GOLDEN FIELD OFFICE

Integrated Biorefinery Research Facility

•Attributes

- Cellulosic ethanol research
- Pilot-scale demonstration
- Expands existing capability
- National user facility
- Can be reconfigured
- LEED Gold or better rating

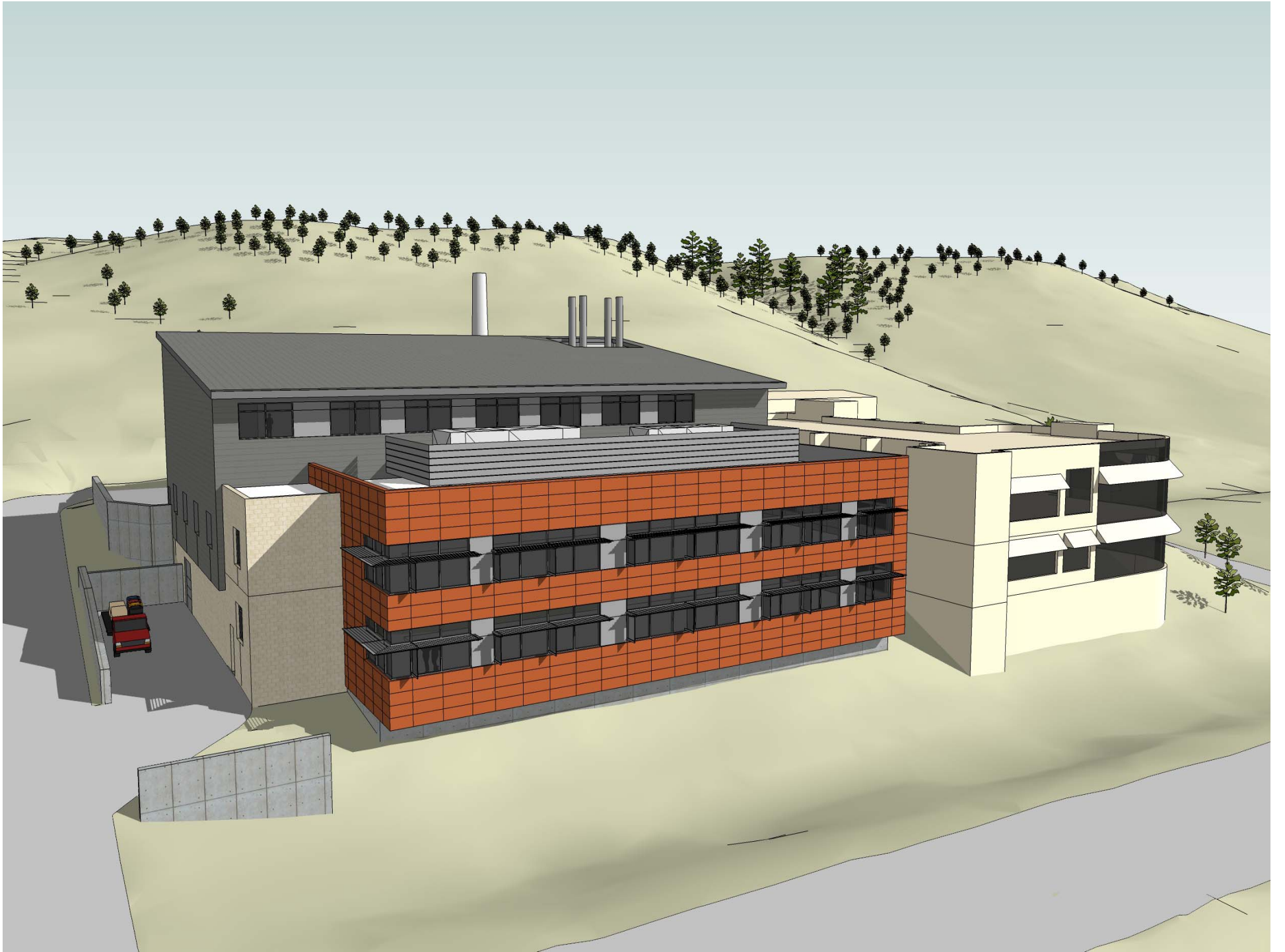
•Funding

- \$20.0M

•Schedule

- Anticipated completion in 2010







U.S. DEPARTMENT OF
ENERGY

GOLDEN FIELD OFFICE

South Table Mountain Development Infrastructure

•Attributes

- Standard site utilities (gas, electric, water, etc.)
- Central parking strategy and structure
- Supports future investments at reduced cost
- Reduces future investment delivery time

•Funding

- Estimated \$25.2M

•Schedule

- Anticipated completion in 2010



U.S. DEPARTMENT OF
ENERGY

GOLDEN FIELD OFFICE

Energy Systems Integration Facility

•Purpose

- Analysis of impact of adding renewable energy technologies to existing electricity grid
- National user facility for electricity industry
- Modeling of existing energy infrastructure through high-performance computing

•Funding

- Estimated at \$93M - \$120M

•Schedule

- Anticipated completion in 2011





U.S. DEPARTMENT OF
ENERGY

GOLDEN FIELD OFFICE

Closing “Social Trail”

- Close “social trail” for public safety
- Construction of access road to provide safe access for major construction activities

