

Instructions for using the U.S. International Trade Commission Trade Data Web.

Step 1: Login Screen. When you go to the Trade DataWeb site, you will be asked to sign-in. If you do not have an account, you will need to create a new account. Use of the Trade DataWeb is free and available to the public. There is no charge for creating an account.




The screenshot shows a web browser window titled "USITC Trade Database -- LOG-IN SCREEN - Microsoft Internet Explorer". The address bar shows "http://dataweb.usitc.gov/scripts/user_set.asp". The page features a blue header with the USITC logo and the text "UNITED STATES INTERNATIONAL TRADE COMMISSION". Below the header, it says "USITC Interactive Tariff and Trade DataWeb Version 2.7.0 Login Screen". A paragraph of text describes the site's capabilities: "Direct access to trade data; customized reports; instant answers. Data on extended special tariff programs now available. Complex queries created under 'advanced searching' can be saved for future runs. For all users - U.S. imports and exports by your list of products or one at a time. Example: enter Quick Query, select all commodities, Chile, 6-digit aggregation, sort by value, and get the top 10 values, all other, and total-instantly. Sign-in below." The login section contains two input fields for "Enter Your Username" and "Enter Your Password", a "LOG-IN" button, and a "FORGOT YOUR PASSWORD?" button. To the right, there is a "CREATE NEW ACCOUNT" button. A note at the bottom states: "Note: You MUST hit either the 'LOG-IN' or 'CREATE NEW ACCOUNT' button to proceed." A final notice at the bottom of the browser window reads: "Notice concerning DataWeb user registration and passwords:".

USITC Trade Database -- LOG-IN SCREEN - Microsoft Internet Explorer

File Edit View Favorites Tools Help

Address http://dataweb.usitc.gov/scripts/user_set.asp Go

 **UNITED STATES INTERNATIONAL TRADE COMMISSION**

USITC Interactive Tariff and Trade DataWeb
Version 2.7.0
Login Screen

Direct access to trade data; customized reports; instant answers. Data on extended special tariff programs now available. Complex queries created under "advanced searching" can be saved for future runs. For all users - U.S. imports and exports by your list of products or one at a time. Example: enter Quick Query, select all commodities, Chile, 6-digit aggregation, sort by value, and get the top 10 values, all other, and total-instantly. Sign-in below.

To enter type in a username and password.
Enter Your Username

Enter Your Password

You must have an account to use this system.
New users to create an account click here :

Note: You MUST hit either the "LOG-IN" or "CREATE NEW ACCOUNT" button to proceed.

Notice concerning DataWeb user registration and passwords:

Step 2: Make a New Query page.

Once you have logged onto the Trade DataWeb using your account user name and password, you will see the Main Menu page. Below the Modify User Account button you will see the Option One- Make a New Query box:

New feature note: Do you run the same queries every month? Complex queries created under "advanced searching" can now be saved for future runs. Create and run your advanced query, then save on lower part of the report page.

Select Trade Type:	Select Classification System For List and Display	Select Years for Trade Data
<input type="radio"/> U.S. Imports For Consumption <input type="radio"/> U.S. Domestic Exports <input checked="" type="radio"/> U.S. General Imports <input type="radio"/> U.S. Total Exports <input type="radio"/> Trade Balance	<p>Try This First! <i>Includes HTS, SIC, SITC, End-use, AG codes, and pre-defined country groups. Fast and easy!</i></p> <input type="radio"/> QUICK QUERY	<p>Years:</p> <input checked="" type="radio"/> Current U.S. Trade (1996-2004) <input type="radio"/> Historical Data (1989-1995)
<p>Advanced Searching <i>ONLY for using customized product or country "lists".</i></p> <input type="radio"/> HTS ITEMS <input type="radio"/> SIC CODES <input type="radio"/> SITC CODES <input type="radio"/> NAIC CODES <input checked="" type="radio"/> EXPERT MODE		
<p>Proceed With New Query</p> <p>Note: You MUST hit the "Proceed With New Query" button to continue.</p>		
<p>Option Two - Run a report from a saved query</p>		

In this box you will choose Trade Type. The Automotive Industries Team of the Office of Aerospace and Automotive Industries (OAAI) uses U.S. General Imports for import trade data, and U.S. Total Exports for export trade data. These are used to capture automotive parts that may come into free trade zones and those that are used in completed vehicles that might not be adequately captured in Imports for Consumption.

Next you will select the Classification System for List and Display. OAAI uses the Expert Mode under Advanced Searching. This allows us to use any of the above choices later.

Next you will select the Years for Trade Data. Usually you will want Current U.S. Trade, unless, of course, you want historical data.

Once you have made your selections, you click the Proceed with New Query button.

Step 3: The Query Design Page.

On this page you will choose what data you want. First you choose Data Selection to report on. OAAI uses General Customs Value for General Imports and FAS Value for Total Exports. In the Data Presentation box, OAAI uses “In 1,000” scale for dollar value.

Query Design Page - Microsoft Internet Explorer
Address <http://dataweb.usitc.gov/scripts/query.asp>

UNITED STATES INTERNATIONAL TRADE COMMISSION

Query Design Page
Version 2.7.0

= Boxes with this symbol mean you can select more than one of these items to run at the same time.

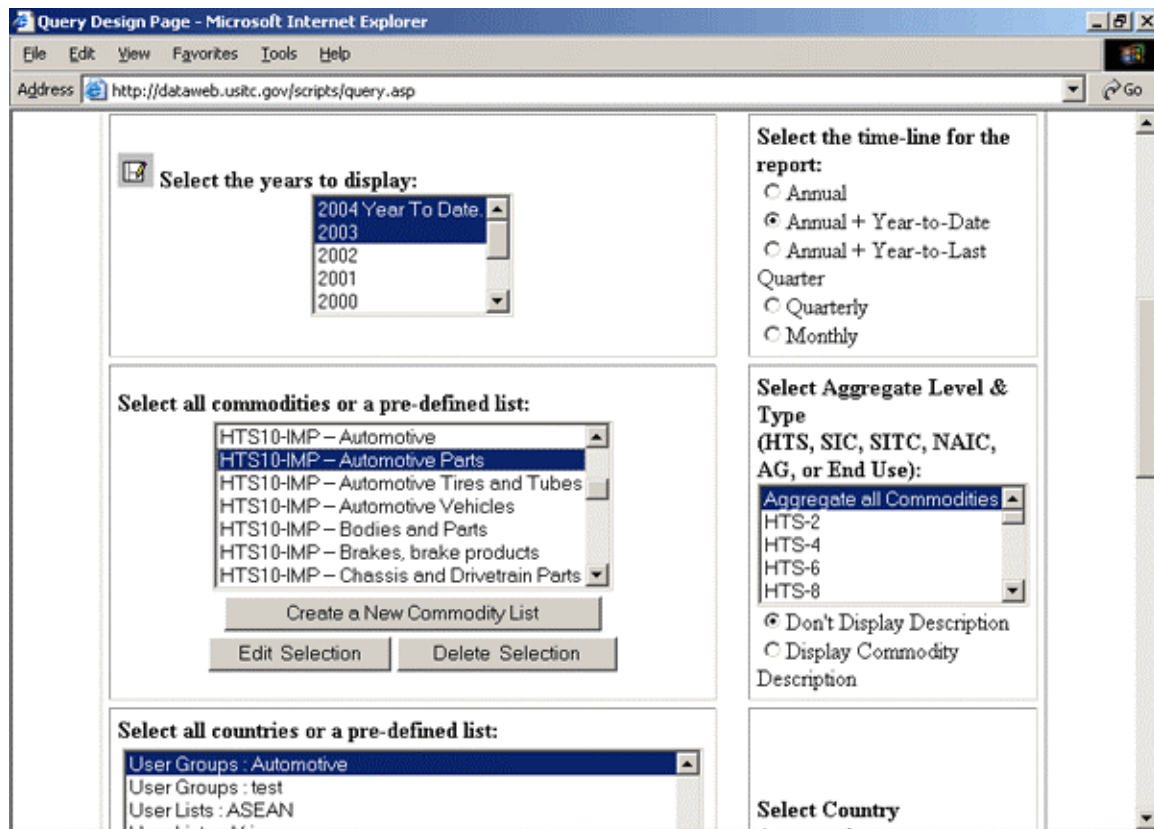
U.S. General Imports

Data Selection	Data Presentation
<p> Select the data to report on:</p> <ul style="list-style-type: none">General Customs ValueGeneral First Unit of QuantityGeneral Second Unit of QuantityGeneral CIF Imports ValueGeneral Import Charges(General Customs Value)/(General First Unit of Quantity) <p>View Data Field Descriptions</p>	<p>Select Scale For Dollar or Quantity Values:</p> <p><input type="radio"/> Actual</p> <p><input checked="" type="radio"/> In 1,000</p> <p><input type="radio"/> In 1,000,000</p> <p><input type="radio"/> In 1,000,000,000</p> <p>Select the time-line for the report:</p>

Select the years to display:

Start | Novell Gro... | Namesecu... | https://we... | Query De... | Adobe Ph... | 12:51 PM

Below the data to report on is the Years of data you want. In this selection box you may select more than one year by holding the control button while using the mouse button to select which years you want displayed. Next to the Select the Years display is the Time-Line to report on. OAAI usually uses Annual plus Year-To-Date. However, you may only want whole end of the year figures, in which case you would click the Annual selection.



Below the Select Year box is the Select All Commodities or Pre-Defined List box. Here the Trade DataWeb gives you limited options, like All Products. However, you may create your own lists (more on creating your own list below). The commodities list is where you would select which products you want to get data on. Thus, if you are only interested in one product, for example Harmonized Tariff Schedule (HTS) code 8708.29.2000 Body Stampings, you can create a new commodity list with this product to run data on. Beside the Select All Commodities box is the Select Aggregate Level and Type of commodities. Here you can choose to aggregate all commodities in a list so you will only get one number. Thus, if there are 20 items in a list, you will get the aggregate trade import data of all 20 products. If you wish to have each item in the list listed individually, you can choose at what level of commodity type you want displayed. At HTS-6, the above example would aggregate all 8708.29 items on the list into one number. You may also select North American Industry Classification (NAIC) code or Standard Industry Classification (SIC) code levels both in the Commodity List or in the

Aggregate Level. Below the Aggregate Level selection you can choose to have the commodity description listed in the query. This is useful if you are doing individual commodities, not aggregate commodities.

NOTE: Please do not try to run a large list of individual HTS commodities along with a large list of individual countries. It is difficult to quantify a “large list” for the Trade DataWeb. The majority of OAAI lists are kept under 500 lines of data, for example 20 individual commodities by 25 individual countries. OAAI will usually aggregate either the country list or commodity list. If at least one of the lists is only a few, maybe 10 or less, items, then OAAI may run individual countries and commodities. Either limit the size of commodity list and country list to a “reasonable number”, aggregate commodities when running a large list of individual countries, or aggregate countries when running a large list of individual commodities. Otherwise you will crash and burn.

Below the Commodities list selections is the Country List Selection.

Query Design Page - Microsoft Internet Explorer
Address: http://dataweb.usitc.gov/scripts/query.asp

Edit Selection Delete Selection

Display Commodity Description

Select all countries or a pre-defined list:

All Countries
USITC CTRY GRP: AGOA
USITC CTRY GRP: AGOA2001
USITC CTRY GRP: AGOA2002
USITC CTRY GRP: AGOA2003
USITC CTRY GRP: AGOA2004
USITC CTRY GRP: ANDEAN

Create a New Country Group

Edit Selection Delete Selection

View a USITC Country Group List

Select Country Aggregation:

Display Countries Separately
 Aggregate all countries together

Select Import Program Aggregation:

Display Import Programs Separately
 Aggregate all Import Programs together

Special Import Programs

All Country Sub Codes
D - AGOA (excluding GSP)
J - Andean Act
B - Auto Pact
R - CBTPA
X - Canada-U.S. (pre 94)
9 - Caribbean (CBI)

NEW -- Extended Special Import Programs (1997 to present)

All Extended Country Sub Codes
D - AGOA (excluding GSP)

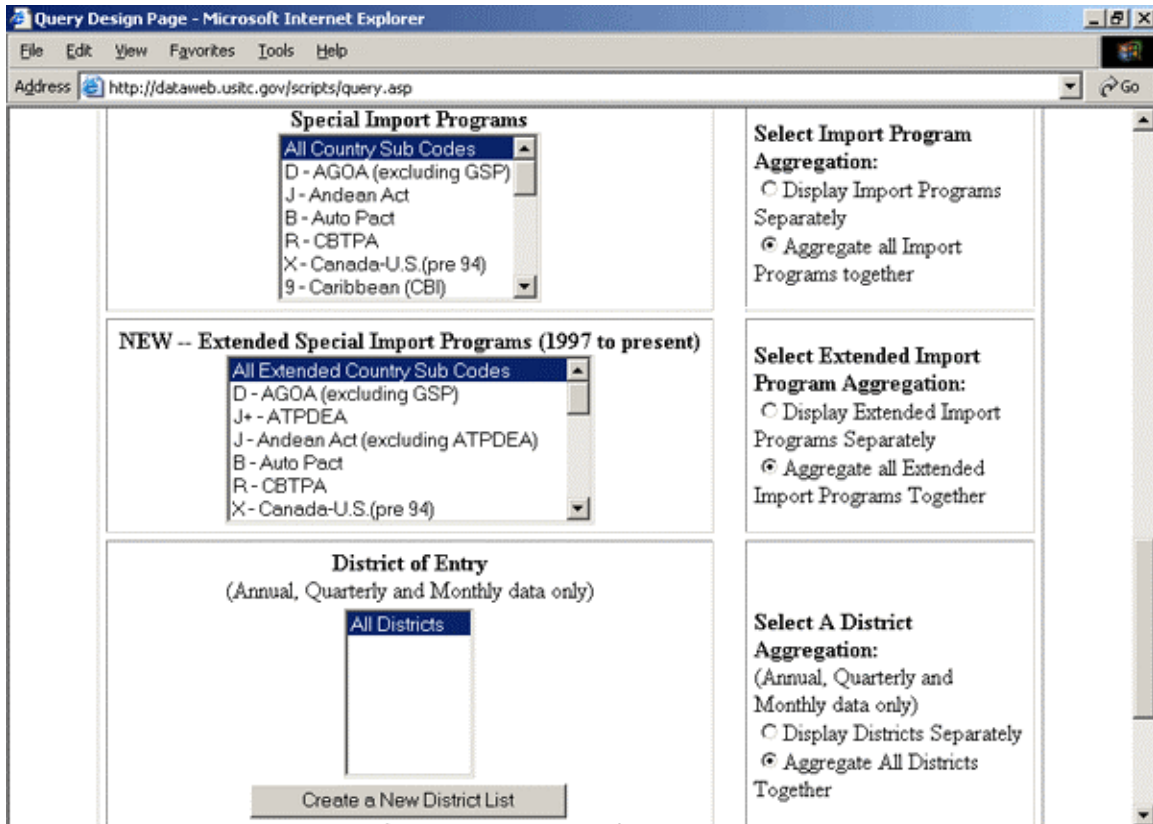
Select Extended Import Program Aggregation:

In the Country List Section you choose which countries you want for the data. You may select all countries, individual countries, regional groups, or your own pre-defined groups. Creating a country group is very similar to creating a Commodity List (guidelines below). Once you have selected which countries you want data for, you select the Country Aggregation. You may choose to display the countries separately or may aggregate all the countries together for one number. Thus, if you are interested in how much in Body Stampings are being imported into the United States, but do not care

from which country, you can choose to Aggregate All Countries. If you want to know from which countries the United States is importing Body Stampings, you would choose Display Countries Separately.

NOTE: Please do not try to run a large list of individual HTS commodities along with a large list of individual countries. It is difficult to quantify a “large list” for the Trade DataWeb. The majority of OAAI lists are kept under 500 lines of data, for example 20 individual commodities by 25 individual countries. OAAI will usually aggregate either the country list or commodity list. If at least one of the lists is only a few, maybe 10 or less, items, then OAAI may run individual countries and commodities. Either limit the size of commodity list and country list to a “reasonable number”, aggregate commodities when running a large list of individual countries, or aggregate countries when running a large list of individual commodities. Otherwise you will crash and burn.

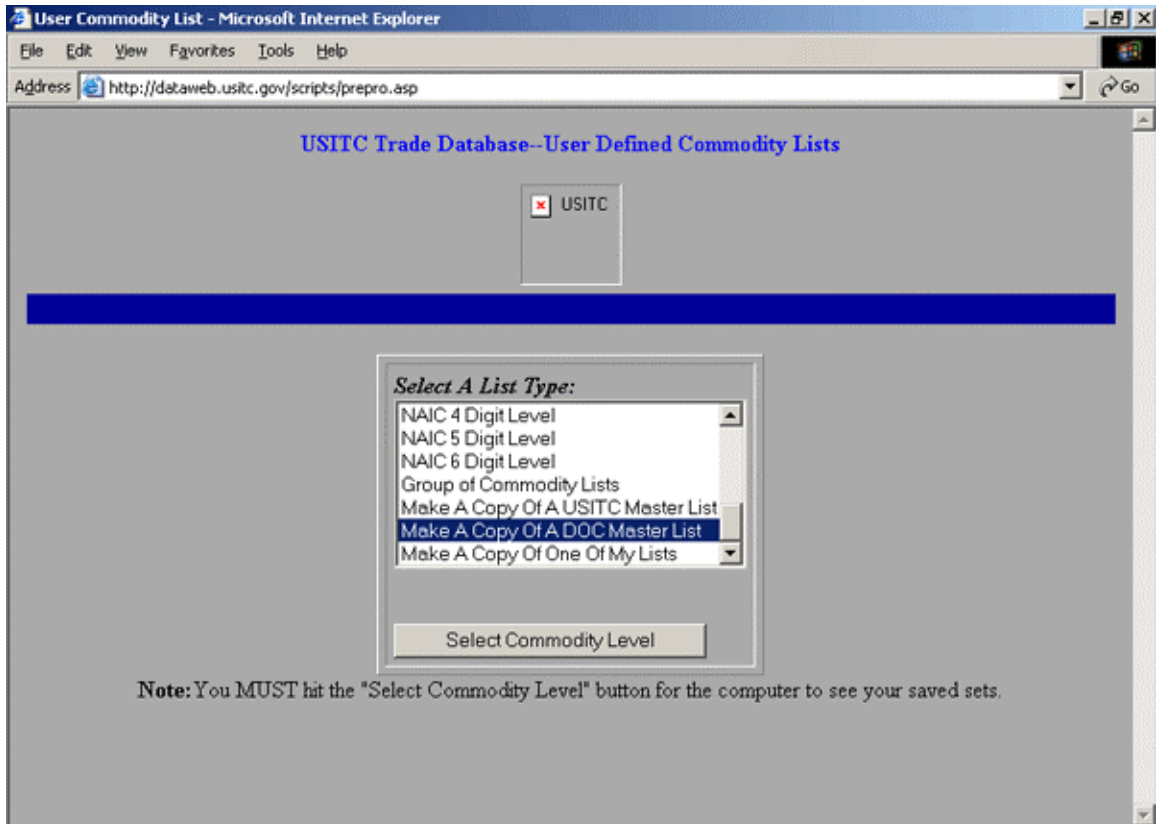
Below the Country Selection boxes are a bunch of boxes not used by OAAI, rather these selections are chosen at the aggregate level. If this is your first time using the Trade DataWeb, no choice is defaulted. You will have to choose and click the aggregate selection, otherwise you will get a warning when you try to proceed to the next page. However, the warning will tell you what you forgot to choose on this page. Thus, for Special Import Programs select All Country Sub Codes; for Select Import Program Aggregation select Aggregate All Import Programs Together; for Extended Special Import Programs select All Extended Country Sub Codes; for Select Extended Import Program Aggregation select Aggregate All Extended Import Programs Together; for District of Entry select All Districts; and for Select A District Aggregation select Aggregate all Districts Together. Once you have chosen, it will default to that choice on future use of the Trade DataWeb.



Step 4: Creating Commodity List/ Country List.

This example will guide you on creating a commodity list. Creating a country list is very similar.

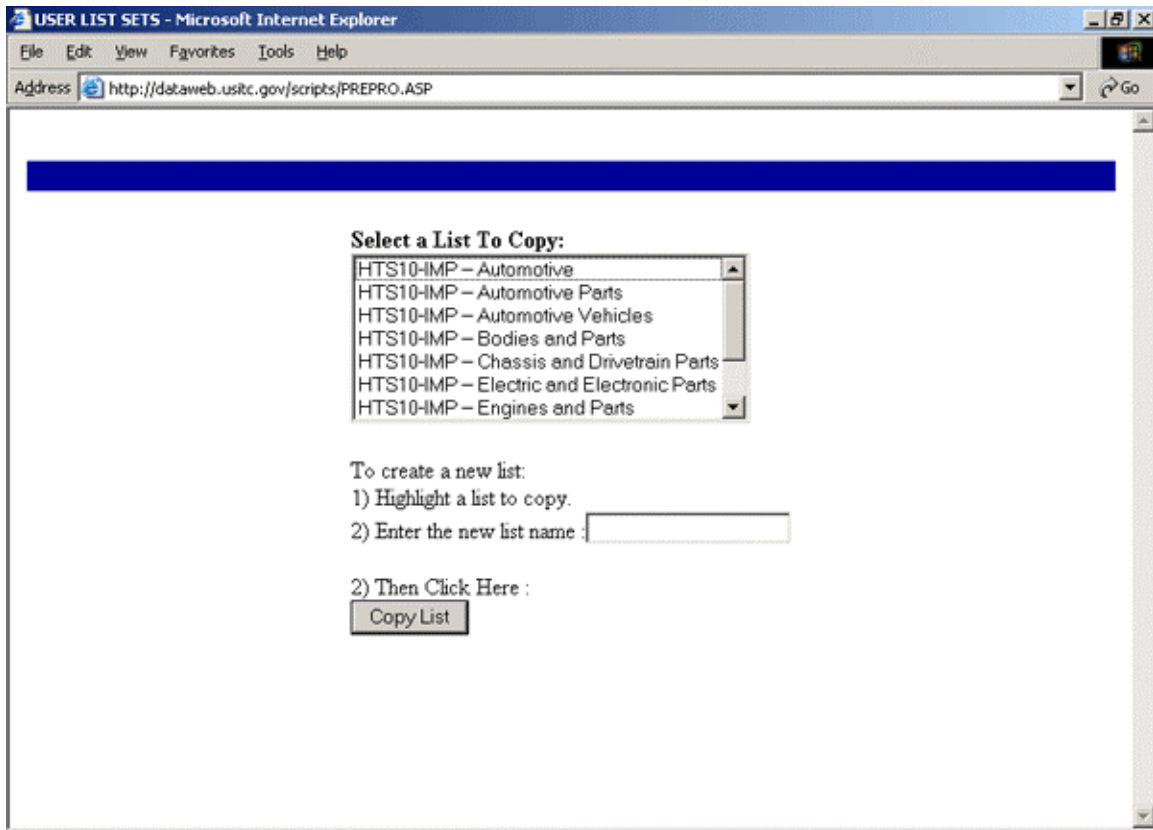
When you select the option to create a new Commodity List on the Query Design Page you will get this option page:



Here you can choose the level of commodity list you want. If you know the individual HTS numbers you want, you can select that list type. If you know the NAIC numbers you want, you can select that list type.

OAAI has been given permission to post its HTS-10 lists on the Trade DataWeb for public use. If you want to make a copy of an OAAI HTS-10 commodity list, you would select Make a Copy of A DOC (Department of Commerce) Master List. Once you have made your selection, you click the Select Commodity Level button.

You will be asked to identify which list you wish to copy and to give your new list a name:



The OAAI lists are:

Automotive (all motor vehicle and automotive parts HTS-10 commodities)

Automotive Parts (all automotive parts HTS-10 commodities)

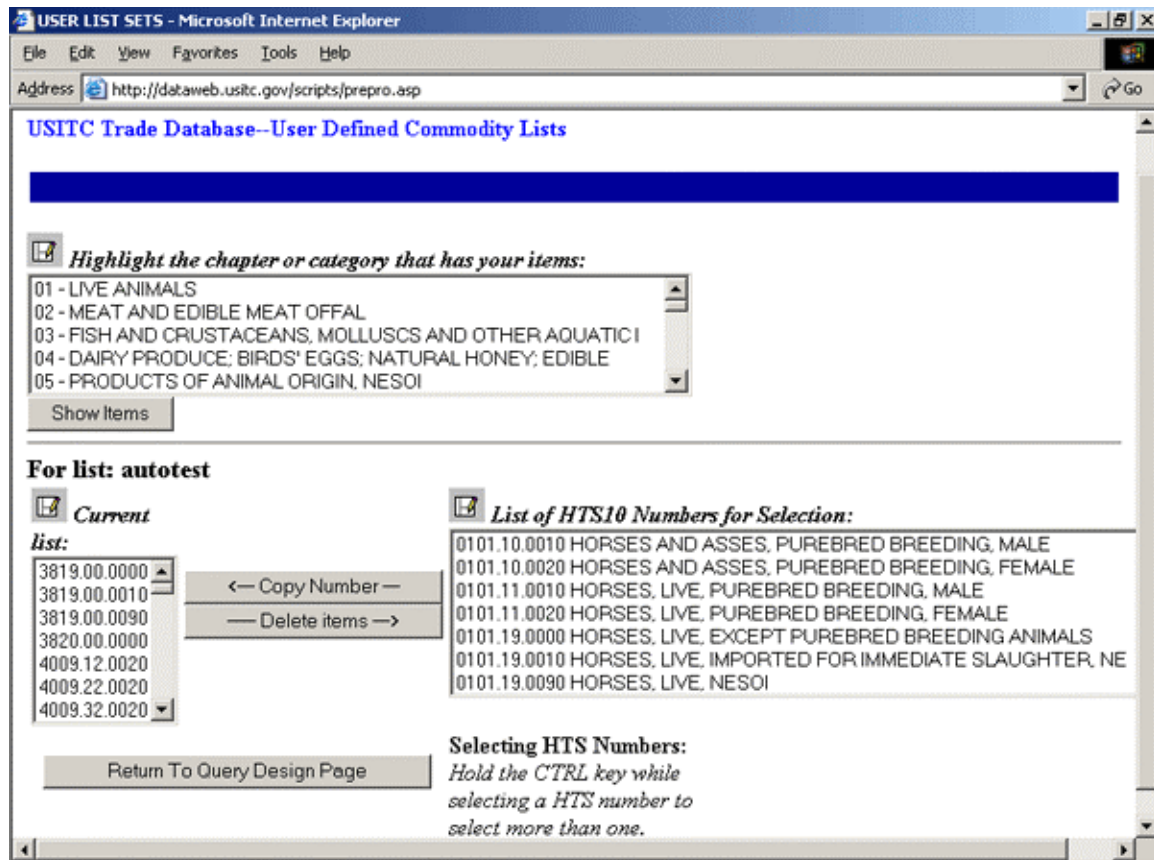
Automotive Vehicles (all motor vehicle HTS-10 commodities)

The other choices include a break down of the automotive parts HTS-10 commodities list into six product group lists- Bodies and Parts, Chassis and Drivetrain Parts, Electric and Electronic Parts, Engines and Parts, Miscellaneous Parts, and Tires and Tubes.

Also, there is a break down of the automotive vehicles HTS-10 commodities list into ten product group lists- Passenger Vehicles and Light Trucks; Ambulances, Hearse, Prison Vans; Buses and Passenger Vans; Chassis with Engines, Commercial; Chassis with Engines, Passenger; Medium and Heavy Straight Trucks; Motor Homes; Passenger Vehicles, Used; Road Tractors, New; and Road Tractors, Used.

Once you have chosen the List to Copy and given your list a name, click the Copy List button.

You will get the User Defined Commodity List page. Here you can make additions or changes to the list you are creating or copying. The first box is of HTS chapters in which any item you want added to the list may be. Many Motor Vehicle and Automotive Parts commodities are in Chapter 87. Select the respective chapter and click the Show Items button.



Below the Chapter Selection is the Current List. If you are making a copy of a DOC Master List there should be a large number of HTS numbers already in this selection. You may choose to delete any of these products by highlighting the product and clicking the Delete Items button. If you wish to delete more than one, you may hold the Control button while selecting the individual items to delete them all at once.

If you are creating a new commodity list from scratch this box will be empty.

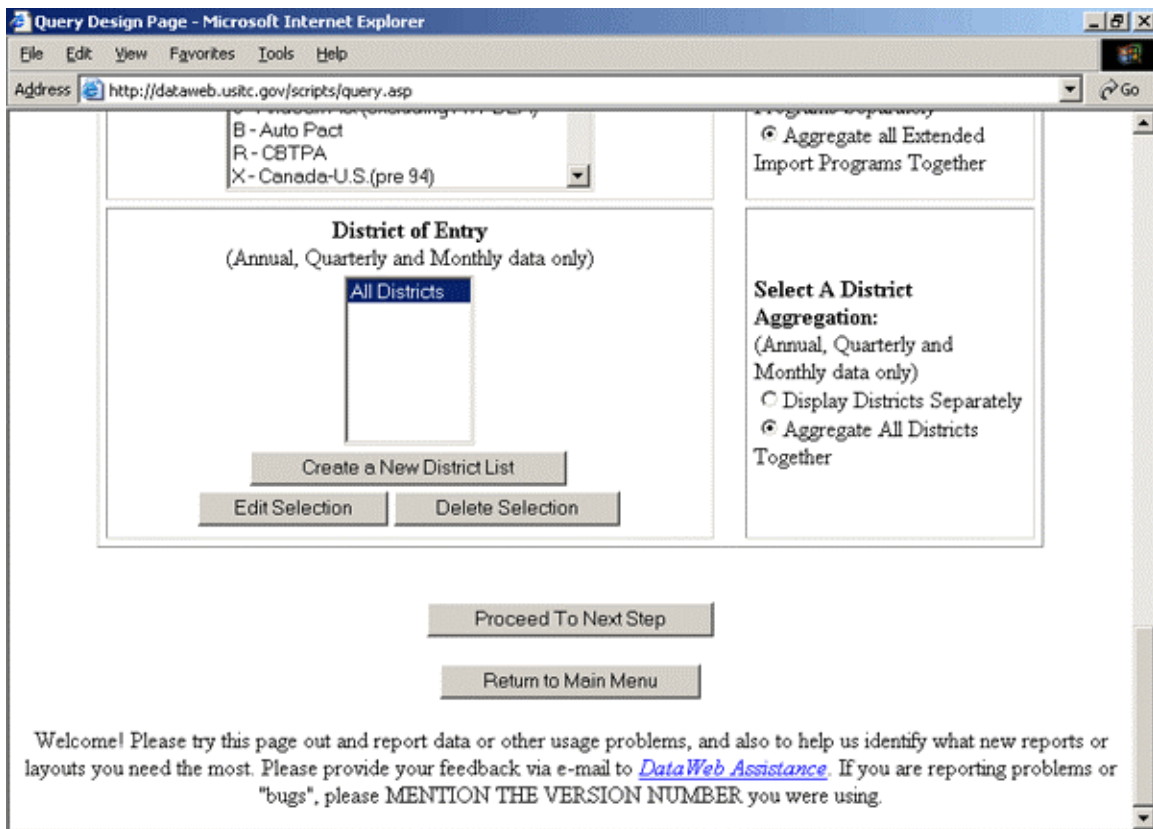
If you wish to add an item to the Current List, the next box is a List of Items for Selection. REMEMBER select the respective chapter in the Highlight the Chapter or Category That Has Your Items and click the Show Items button to see the list of Items for Selection. In this box you may again hold the Control button down and click several individual items to Copy Number over into the Current List with one click of the Copy Number button.

After you have made any changes you want, you click the Return to Query Design Page. This will take you back to the Query Design Page where you can select your newly created Commodity List or Country List for your query.

WARNING! Do not attempt to use the back key on your internet browser to return to the Query Design Page. The list you created won't be saved and you will lose the commodity or country list you created. Be sure to click the Return to Query Design Page button to return to the Query Design Page.

Step 5: Proceed to the Next Step.

Once you have filled in everything you want from your query, click the Proceed to Next Step button. This will take you to the Sort Order Page where you select how you want the information displayed on screen or downloadable.



Step 6: Sort Order page.

On this page you decide how you want the information displayed or if you want it downloadable to your computer for use in a spreadsheet.

Select Field Order - Microsoft Internet Explorer
Address http://dataweb.usitc.gov/scripts/prepro.asp

Sort Order Page
Version 2.7.0
Column Display Order:
COUNTRY

Data Conditions	Report Selections
<p>Select the values for first sort: "NOTE--YOU CAN NOW SORT BY PERCENT CHANGE"</p> <p>GENERAL CUSTOMS VALUE NONE GENERAL CUSTOMS VALUE GENERAL IMPORT CHARGES GENERAL CIF IMPORT VALUE PERCENT CHANGE COUNTRY NAME</p> <p><input checked="" type="radio"/> Top 15 Values</p> <p>Percent Change <input checked="" type="checkbox"/> Display percent change.</p> <p>Select the year to sort on: 2003</p>	<p><input checked="" type="radio"/> Display Grid <input type="radio"/> Don't Display Grid (Useful for faster printing)</p> <p>Display key variable names: <input checked="" type="radio"/> On the first line of each group <input type="radio"/> On every line (useful for spreadsheets)</p> <p><input checked="" type="checkbox"/> Enable Sub-Totals <input type="checkbox"/> Suppress Zero Values <input type="checkbox"/> Display Commodity List</p> <p>SELECT FONT SIZE FOR REPORT: <input type="radio"/> One <input type="radio"/> Two <input checked="" type="radio"/> Three <input type="radio"/> Four</p>

First, you decide how you want to sort the data. Do you want it by Country Name, Product Number, General Customs Value, or Percentage Change? If you select Country Name, the information will be sorted alphabetically by country name. If you select General Customs Value, the information will be sorted by the amount imported into the United States. If you select Product Number (if displaying products individually), the data will be sorted by product number, i.e. NAICS, HTS, or SIC code. If you select Percent Change, the data will be sorted by how much imports have increased/decreased.

Once you have decided how you want the data sorted, you choose if you want it Ascending or Descending. Do you want Algeria to come before Zaire, or the other way around? Do you want the largest importer on top or the smallest importer? Do you want the largest percent change first or last on the display?



If you have many individual countries or products, you may want to see all records. Then select Show All Records. Otherwise the system will default to the top 15 values.

Below the Show All Records selection is the Percent Change selection. Do you want to see how much the imports have changed percentage-wise over previous year?

Below the Percent Change selection is the Select the Year to Sort On. If you choose to sort by General Customs Value or Percent Change, you need to let the system know which year you want it to use for sorting purposes.

Below the Select the Year to Sort on is the Total Number of Records to Display. The maximum is 5000. This is only the maximum to be displayed on screen. If you are planning to download to a spreadsheet, all returned records even those over 5000 records can be downloaded and displayed into your spreadsheet program (see below for download spreadsheet selection). As mentioned above if you try to do too many countries along with too many individual commodities, you may crash and burn. Thus, if you want more than 500 records to display, you may want too many and should reconsider your query.

The next Column deals with the actual display on the screen. Here you can select if you want grid lines or not and font size. Generally, OAAI leaves these at default.

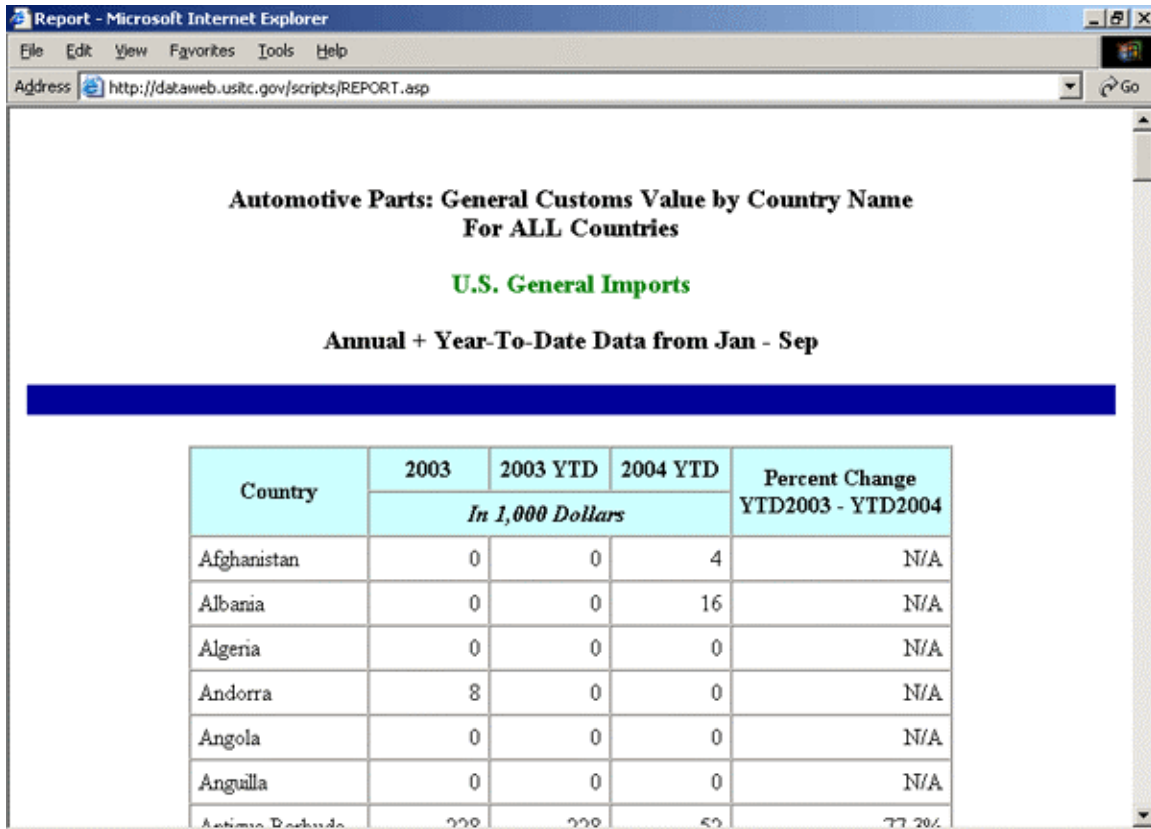
Below the set-up column is the Display the Report in "Printable Format" (no download instructions displayed) option. If you just want the data on the screen or to print out, you may want to select this option. If however, you want to download the data onto your computer so you can use it in a spreadsheet program, you would NOT click the button.

Once you have decided how you want the data displayed, click the Run Report button.

Step 6: Report.

If you forgot something or made a mistake along the way, the system should let you know. If it did tell you of a mistake or that something was missed, hit the back key on the browser and make the appropriate selection.

If you did everything correct, you should see a report like this.



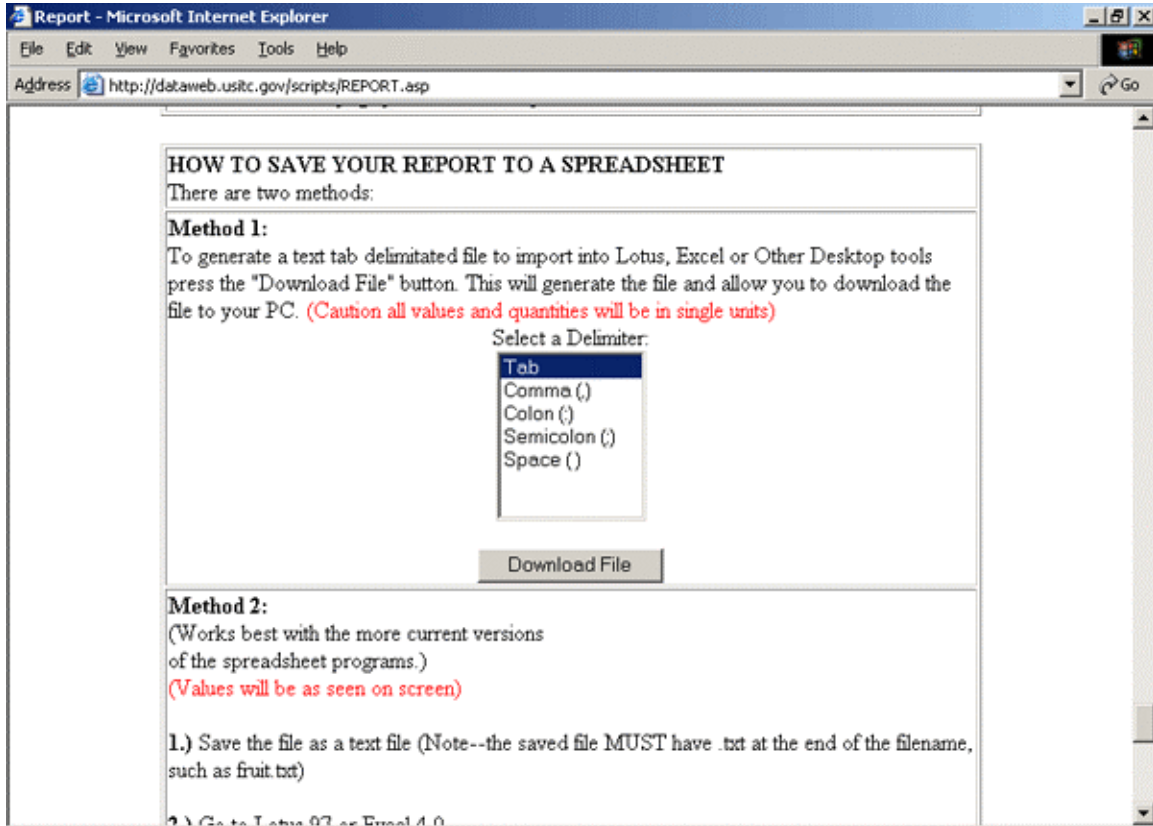
**Automotive Parts: General Customs Value by Country Name
For ALL Countries**

U.S. General Imports

Annual + Year-To-Date Data from Jan - Sep

Country	2003	2003 YTD	2004 YTD	Percent Change YTD2003 - YTD2004
	<i>In 1,000 Dollars</i>			
Afghanistan	0	0	4	N/A
Albania	0	0	16	N/A
Algeria	0	0	0	N/A
Andorra	8	0	0	N/A
Angola	0	0	0	N/A
Anguilla	0	0	0	N/A
Antigua and Barbuda	228	228	52	77.2%

If you decided to have the system run a report in a downloadable form, so you can use it in a spreadsheet program, your data report will have these instructions for downloading below the data:



Congratulations. You have just completed your first data run from the U.S. I.T.C. Trade DataWeb. Now go and play with the other options to come up with your own customized trade data.

If you have any questions or problems using the Trade DataWeb, please contact the U.S. International Trade Commission via their online assistance form at http://dataweb.usitc.gov/scripts/dataweb_help/dw_help.asp.

Also, remember the USITC DataWeb pages are provided as advisory tools for use by the public. While the staff at the USITC extended significant quality control efforts in producing these pages, the USITC does not guarantee their accuracy or their completeness. By using these web pages, the user acknowledges that use of the data contained herein is solely at his/her own risk and agrees to hold USITC (or any member or employee thereof) harmless for refunds or damage incurred of any kind. The user agrees not to hold the USITC (or any member or employee thereof) responsible for the

accuracy or completeness of the information on this site. Likewise, the user will not hold the USITC (or any member or employee thereof) responsible for any consequences arising from any use of data contained in the site. Neither the USITC, nor any of its providers of information shall have any liability for the accuracy of the information contained in the DataWeb pages, or for omissions therein. The USITC makes no warranties, express or implied, as to results to be obtained from use of such information and the USITC shall not be liable for any third party claims or losses of any nature.

(Prepared by Forrest Nielsen, ITA/MAS/MFG/Office of Aerospace and Automotive Industries (OAAI), U.S. Department of Commerce, December 8, 2004.

Forrest_Nielsen@ita.doc.gov)