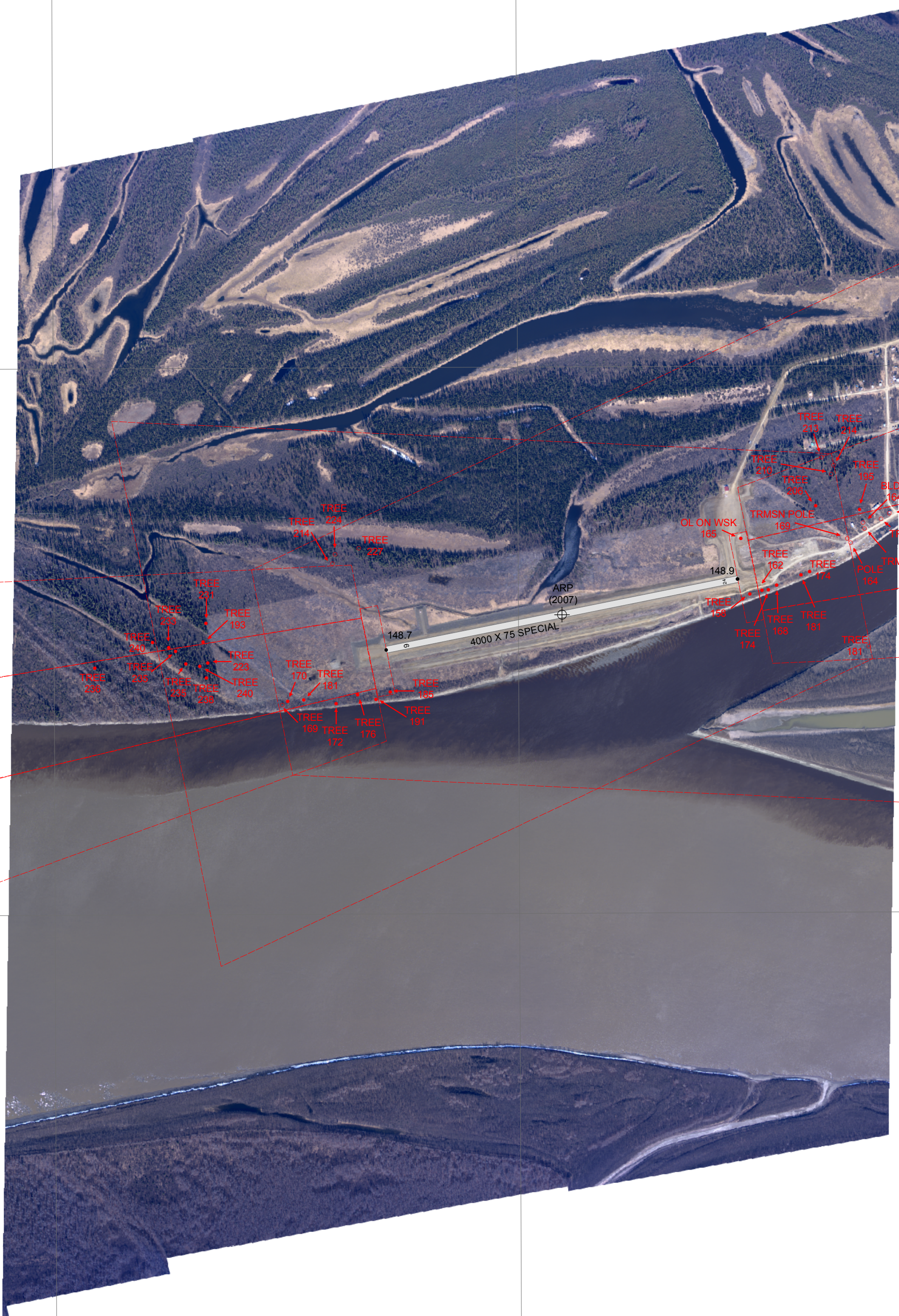


# ANA-LPV DIAGRAM KOYUKUK AIRPORT, KOYUKUK, ALASKA



## Legend

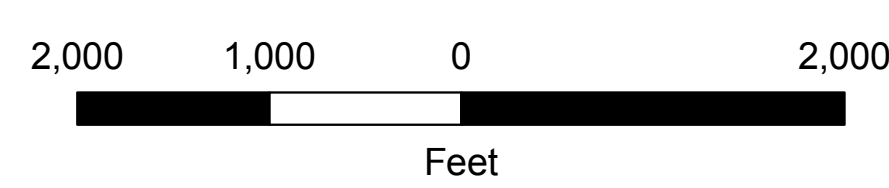
- Non-Penetrating Obstacle
- Penetrating Obstacle
- Runway Point
- ⊖ Displaced Threshold
- ⊕ Airport Reference Point
- ▭ Obstruction Identification Surface
- ▭ Runway



Surveyed and compiled by the National Oceanic and Atmospheric Administration (NOAA), U.S. Department of Commerce in accordance with specifications and standards of accuracy of the Federal Aviation Administration, Department of Transportation and NOAA. This product was generated from geospatial vector files that adhered to the Data Content Standard for Airport Obstruction Chart. For more information refer to: <http://www.ngs.noaa.gov/>

Field Survey: July 7, 2007  
Date of Imagery: May 16, 2007  
Date of Release: December, 2007  
Layout Version: 1.0

ANA - LPV Diagram data is available on the Internet in the Universal Data Delivery Format at <http://www.ngs.noaa.gov>



1:12,000 SCALE

HORIZONTAL DATUM ..... North American Datum of 1983  
VERTICAL DATUM ..... North American Vertical Datum of 1988  
PROJECTION ..... Transverse Mercator  
GRID SYSTEM ..... Alaska State Grid, Zone 6  
MAGNETIC DECLINATION ..... 17.5° East

**KOYUKUK AIRPORT  
KOYUKUK, ALASKA  
AL 10161**