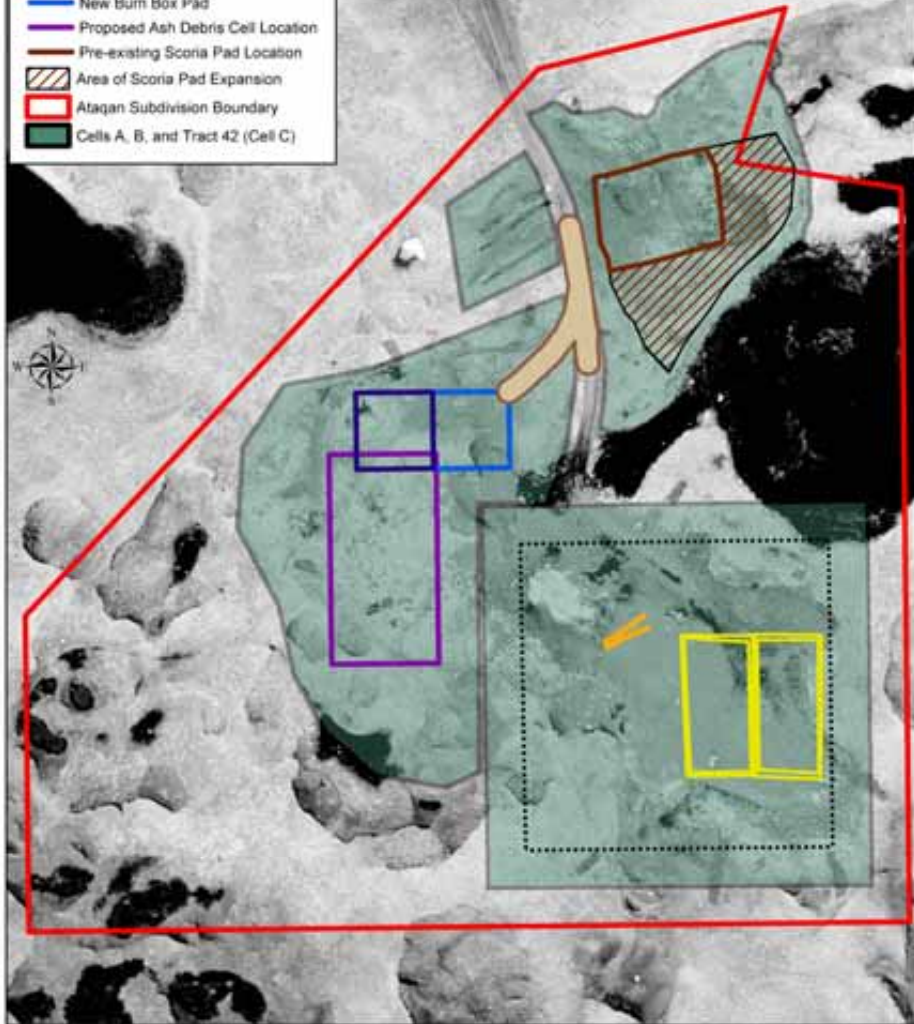


Restoration Advisory Board  
St. Paul Meeting  
November 4, 2003

Landfill Closure Figures

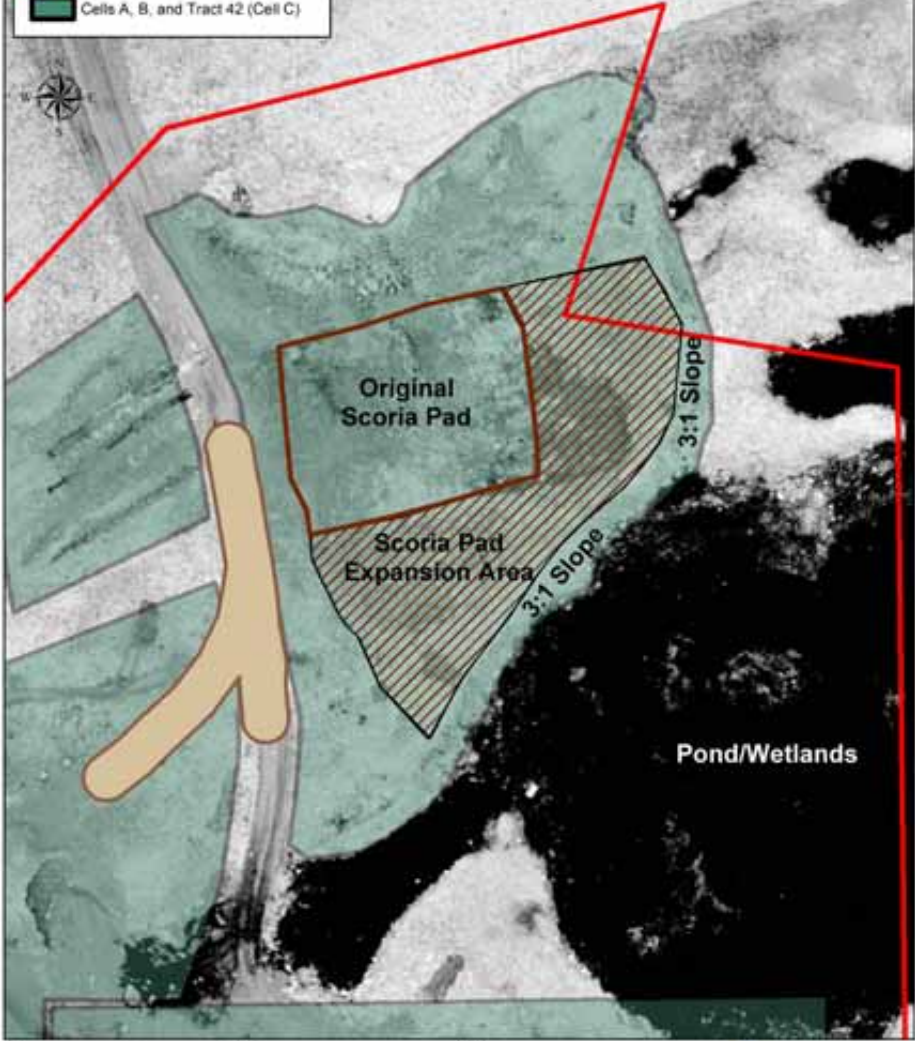
# Overview of Construction Activities at the St. Paul Landfill Field Season 2003

- Legend**
- Landfill PCS Liner Locations
  - Area of Road Expansion, 30' wide
  - ..... Tract 42 50ft Setback
  - Burnbox Location, summer 2003
  - New City Pad
  - New Burn Box Pad
  - Proposed Ash Debris Cell Location
  - Pre-existing Scoria Pad Location
  - Area of Scoria Pad Expansion
  - Ataqan Subdivision Boundary
  - Cells A, B, and Tract 42 (Cell C)

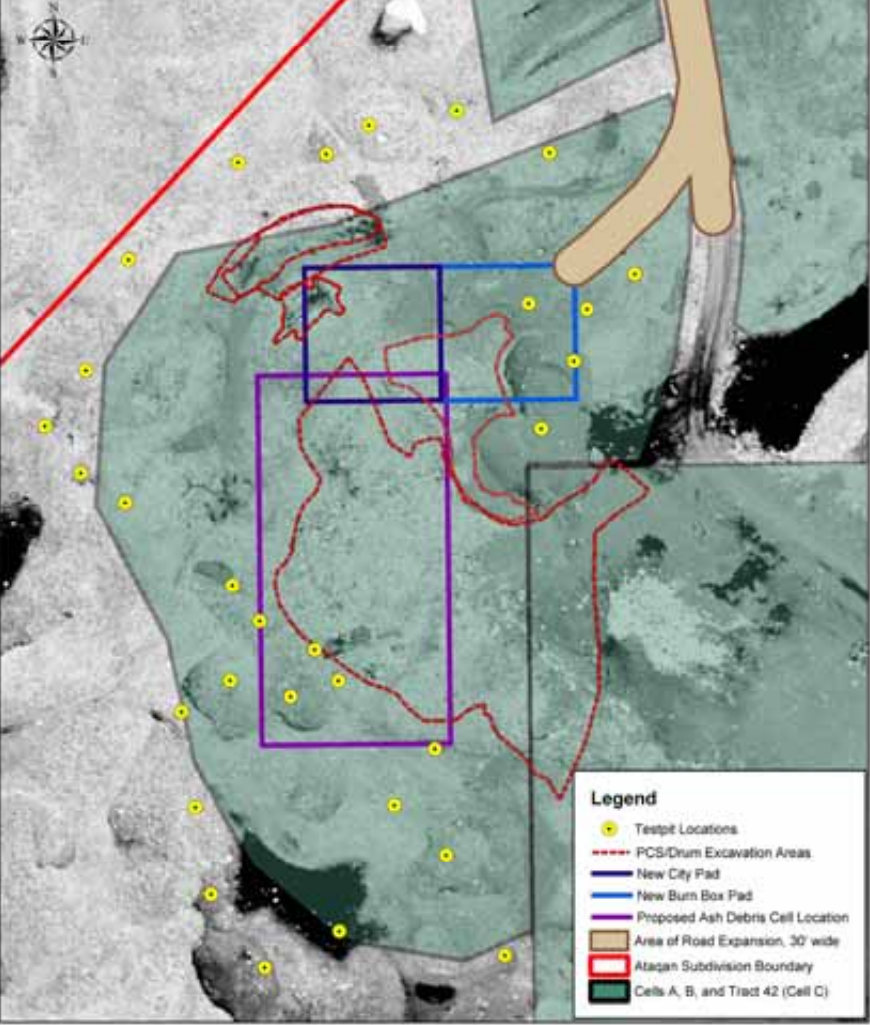


# Overview of Construction Activities St. Paul Landfill Cell A Field Season 2003

- Legend**
- Area of Road Expansion, 30' wide
  - Pre-existing Scoria Pad Location
  - Area of Scoria Pad Expansion
  - Ataqan Subdivision Boundary
  - Cells A, B, and Tract 42 (Cell C)



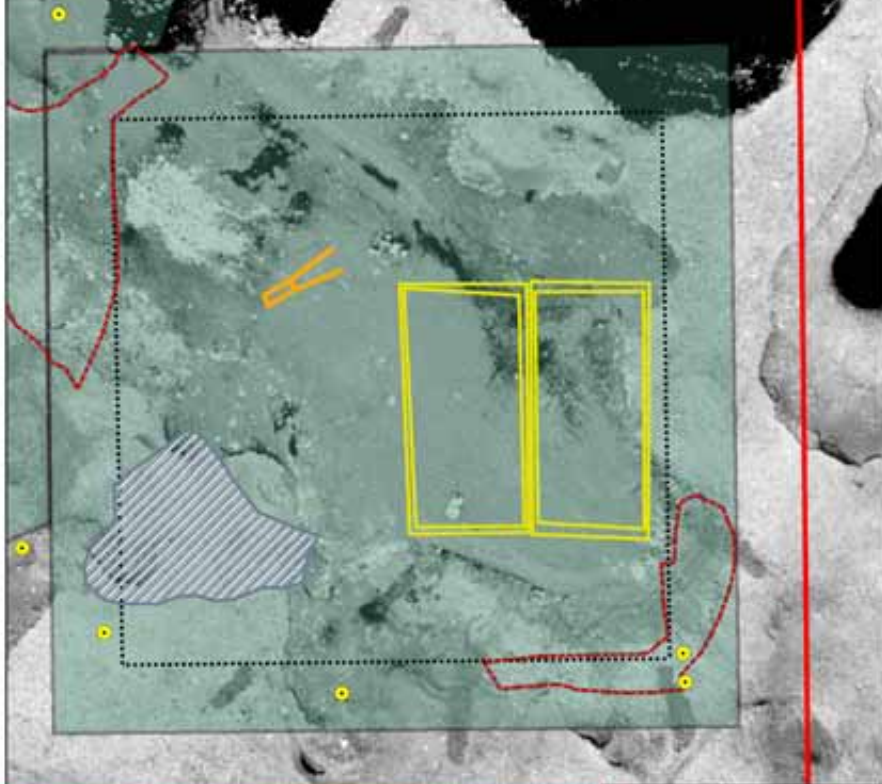
Overview of Construction Activities  
St. Paul Landfill Cell B  
Field Season 2003



0 75 150 300  
Feet



Overview of Construction Activities  
St. Paul Landfill Cell C/NOAA Tract 42  
Field Season 2003



**Legend**

- Landfill PCS Liner Locations
- Test Pit Locations
- Tract 42 50ft Setback
- PCS/Drum Excavation Areas
- Burnbox Location, summer 2003
- Current Disposal Area
- Atagan Subdivision Boundary
- Cells A, B, and Tract 42 (Cell C)

