

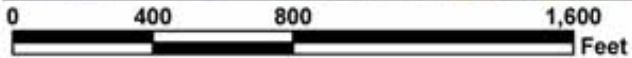
Restoration Advisory Board
St. Paul Meeting
November 4, 2003

2003 Cleanup Activity Figures

St. Paul Island
Site Activity During Field Season 2003



St. Paul Village Site Activity During Field Season 2003



Former Alaska Dormitory
Site Excavation Work
Field Season 2002



140 cubic yards PCS removed

Cascade Building

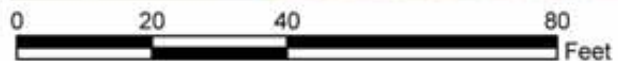
Former Alaska Dormitory Building

Legend

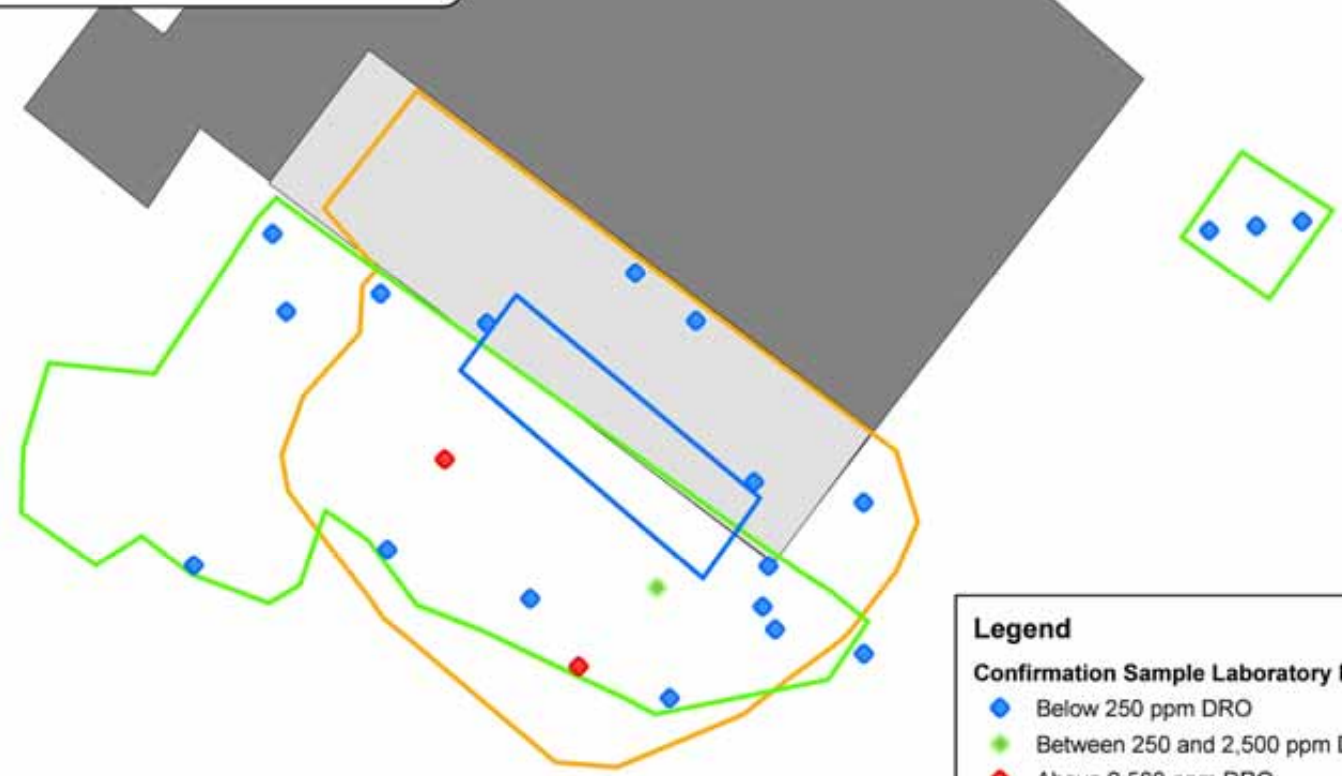
- UST Location (removed)
- - - Final Extent of Excavation

Confirmation Sample Laboratory Results

- ◆ Below 250 ppm DRO
- ◆ Above 2,500 ppm DRO



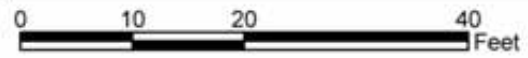
Decommissioned Power Plant
Site Excavation Work
Field Season 2002



Legend

Confirmation Sample Laboratory Results

- ◆ Below 250 ppm DRO
- ◆ Between 250 and 2,500 ppm DRO
- ◆ Above 2,500 ppm DRO
- ▭ Excavation Extent, 8/02
- ▭ Excavation Extent, 11/02
- ▭ UST Outline
- ▭ Foundation Removed
- ▭ Decommissioned Power Plant Building



Decommissioned Power Plant Annex and West Dock Fuel Transfer Facility Site Excavation Work Field Season 2003



0 25 50 100 Feet

Former Fuel Drum Storage Area
Site Excavation Work
Field Season 2003

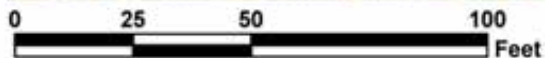
Machine Shop/Municipal Garage

Village Hill Gazebo

Site Excavation Area:
1,160 cubic yards removed
984 cubic yards backfill placed

Legend

- Final Excavation Extent
- Confirmation Sample Laboratory Results**
 - Below 250 ppm DRO
 - 250 - 2,500 ppm DRO
 - Above 2,500 ppm DRO



Former Fouke Bunkhouse
Site Excavation Work
Field Season 2003



Former Fouke Bunkhouse

155 cubic yards PCS removed
168 cubic yards backfill placed

Legend

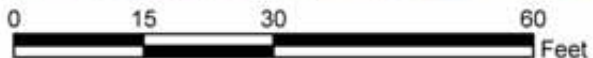
— UST Location (Removed)

Excavation Extent

Confirmation Sample Laboratory Results

Below 250 ppm DRO

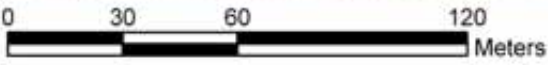
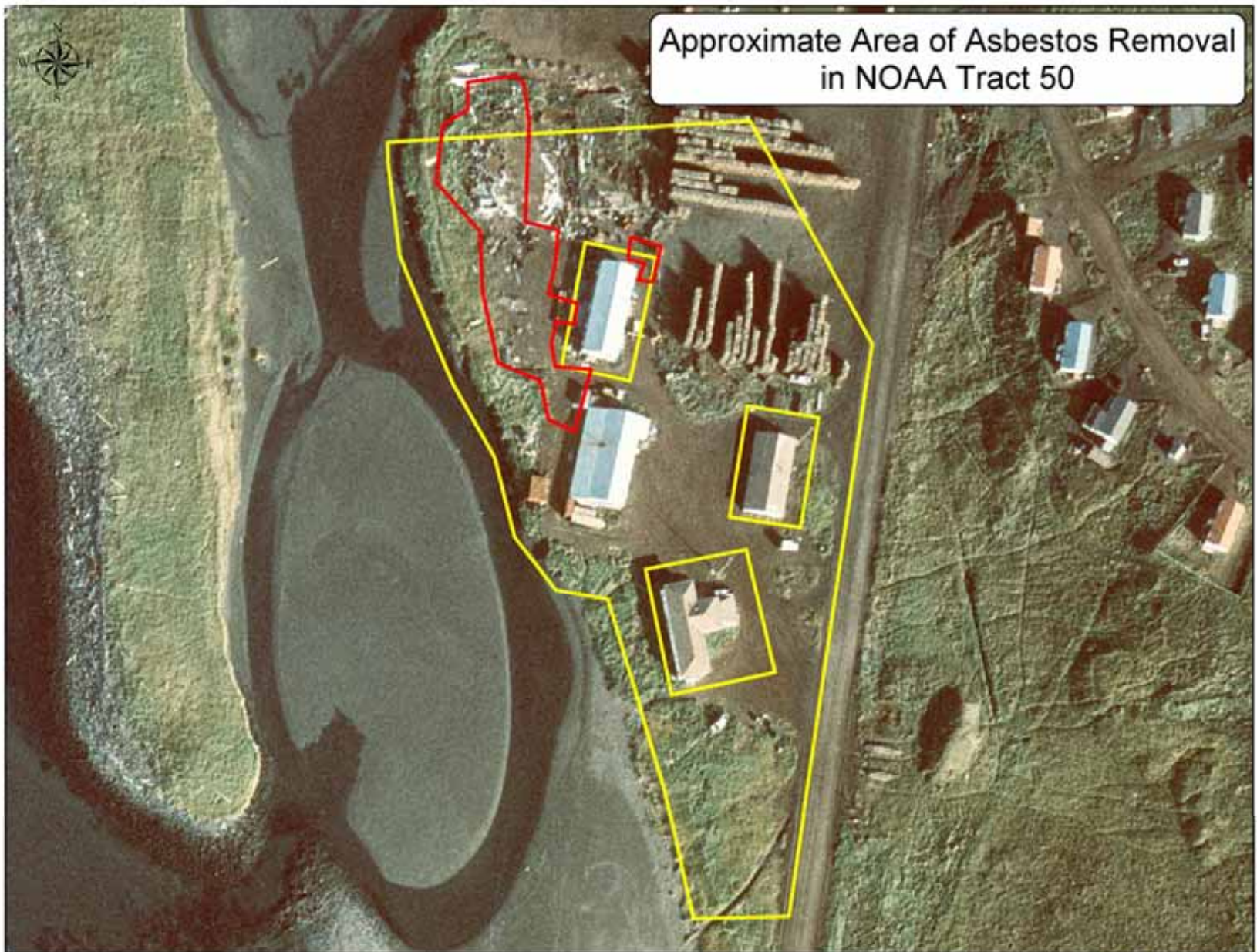
Between 250 and 2,500 ppm DRO





0 15 30 60 Feet

Approximate Area of Asbestos Removal
in NOAA Tract 50

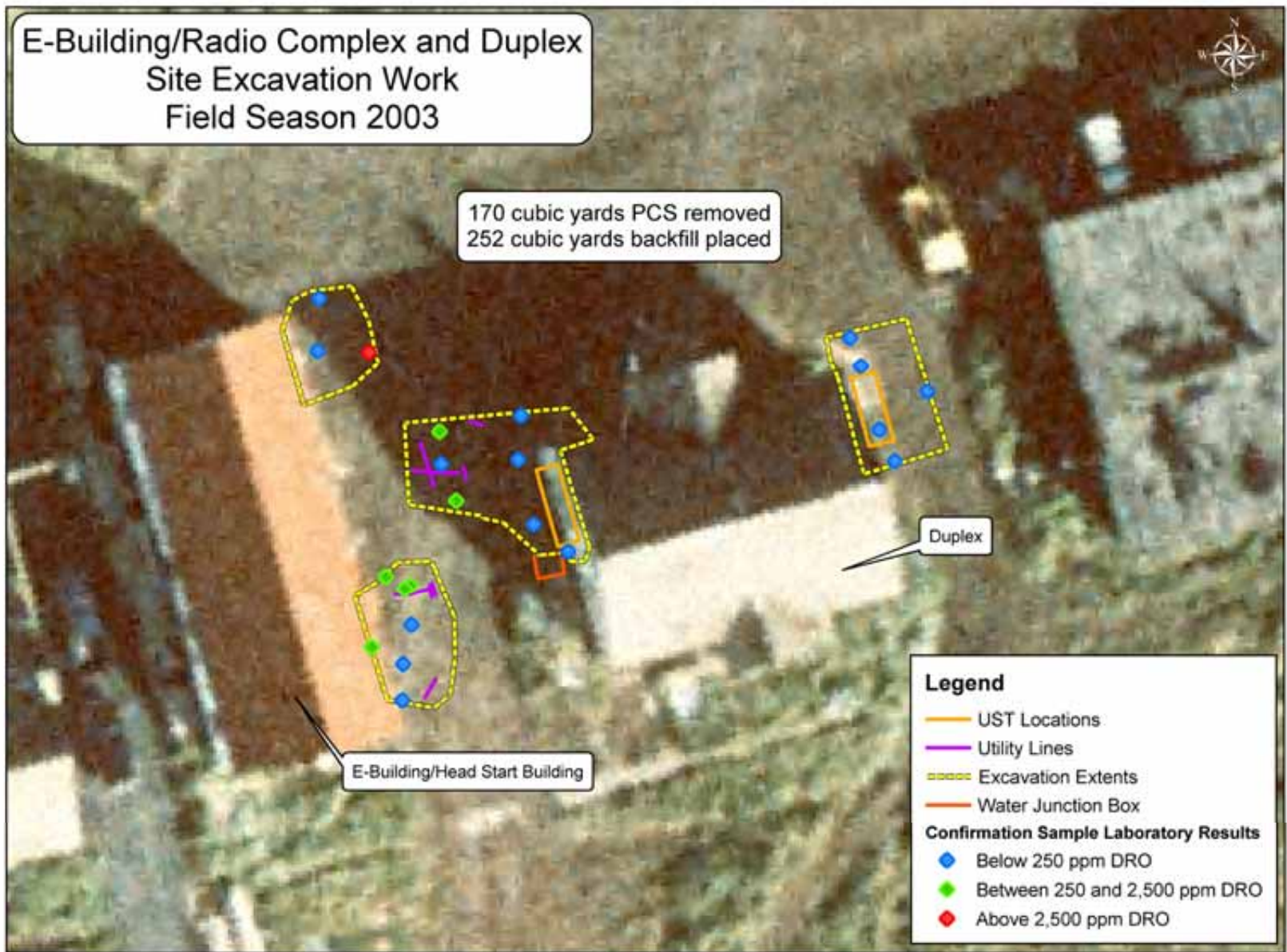


Anderson Building/5-Car Garage Site Excavation Work Field Season 2003



E-Building/Radio Complex and Duplex Site Excavation Work Field Season 2003

170 cubic yards PCS removed
252 cubic yards backfill placed



Duplex

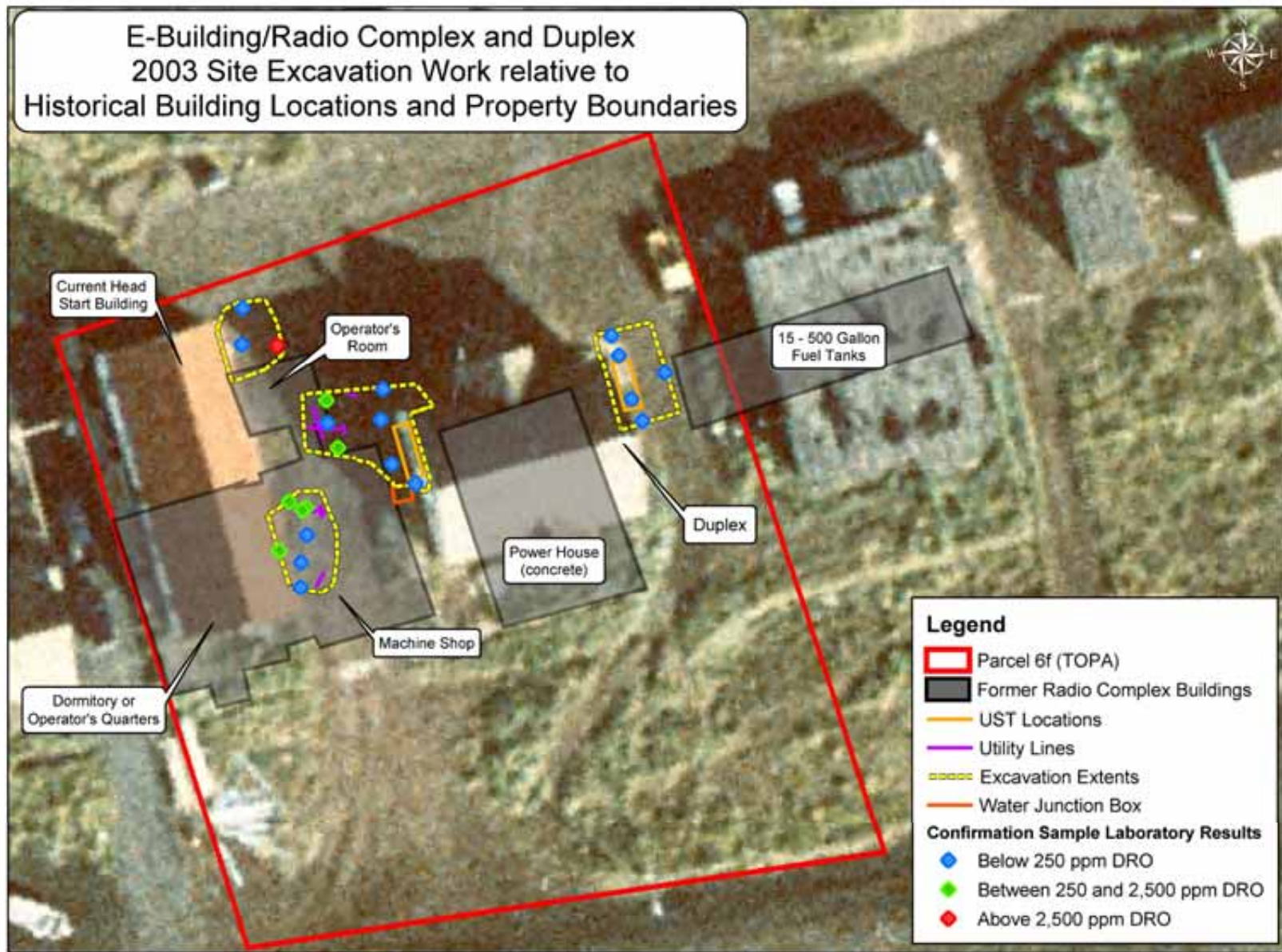
E-Building/Head Start Building

Legend

- UST Locations
 - Utility Lines
 - - - - Excavation Extents
 - Water Junction Box
- Confirmation Sample Laboratory Results**
- ◆ Below 250 ppm DRO
 - ◆ Between 250 and 2,500 ppm DRO
 - ◆ Above 2,500 ppm DRO

0 15 30 60 Feet

E-Building/Radio Complex and Duplex
 2003 Site Excavation Work relative to
 Historical Building Locations and Property Boundaries



0 25 50 100 Feet

Legend

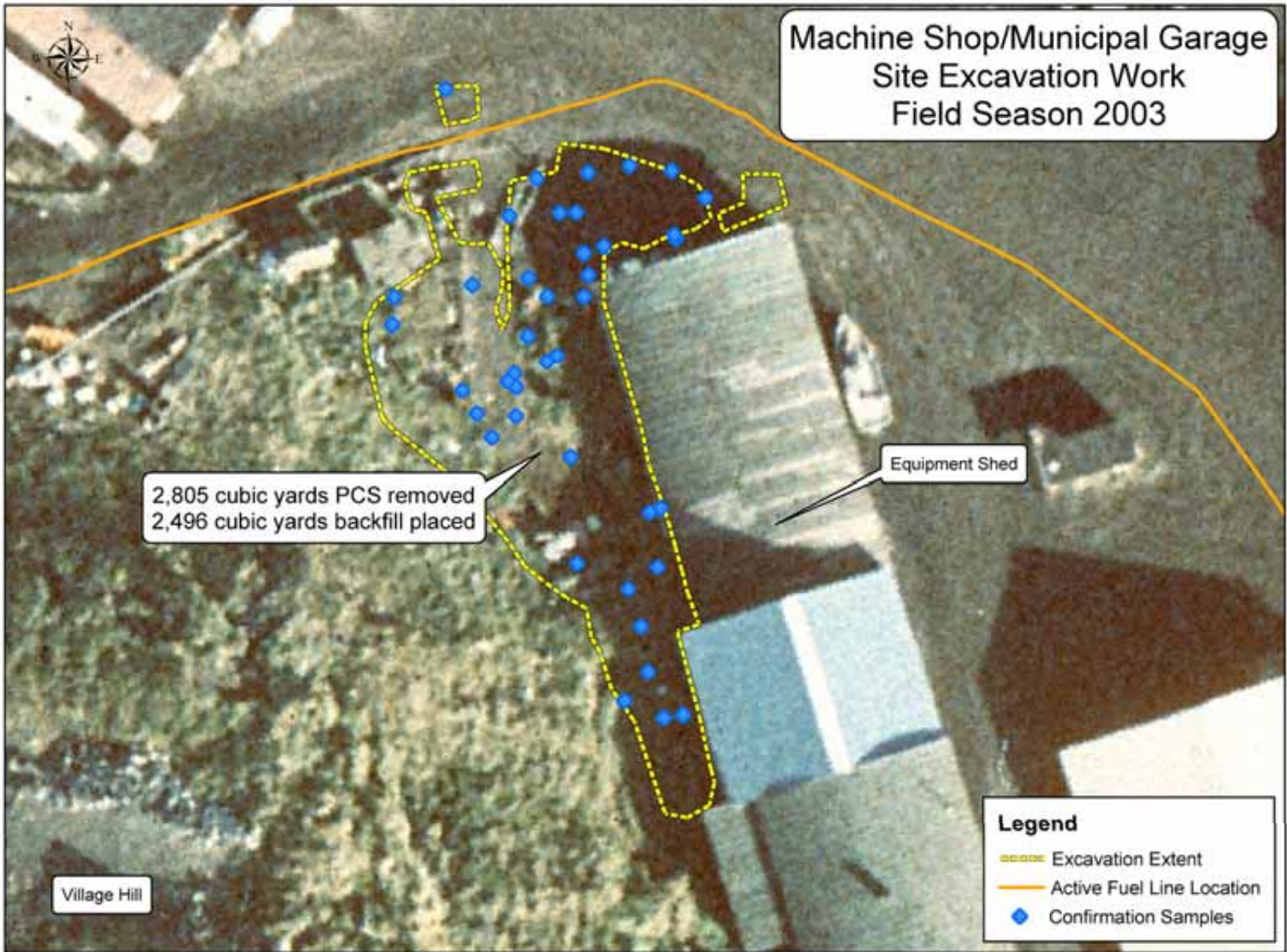
- Parcel 6f (TOPA)
- Former Radio Complex Buildings
- UST Locations
- Utility Lines
- Excavation Extents
- Water Junction Box

Confirmation Sample Laboratory Results

- ◆ Below 250 ppm DRO
- ◆ Between 250 and 2,500 ppm DRO
- ◆ Above 2,500 ppm DRO

Tract A House 102
UST Removal
Field Season 2003





0 25 50 100
Feet



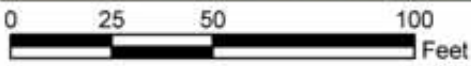
Former Diesel Tank Farm
Site Excavation and Sampling
Field Season 2003



6,550 cubic yards PCS removed
8,892 cubic yards backfill placed

Legend

- ◆ Confirmation Samples
- 10" Water Main
- - - Final Excavation Extent

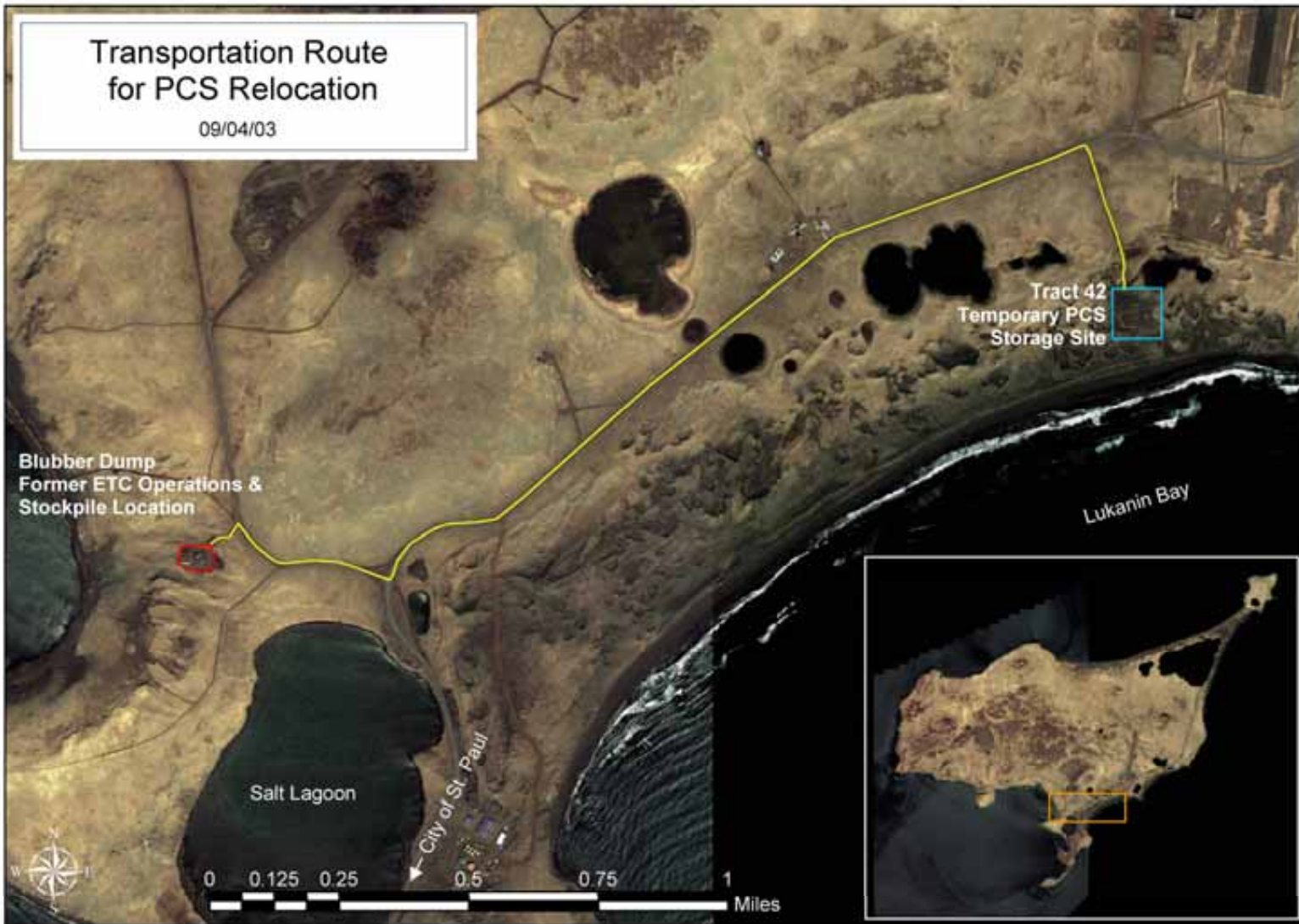


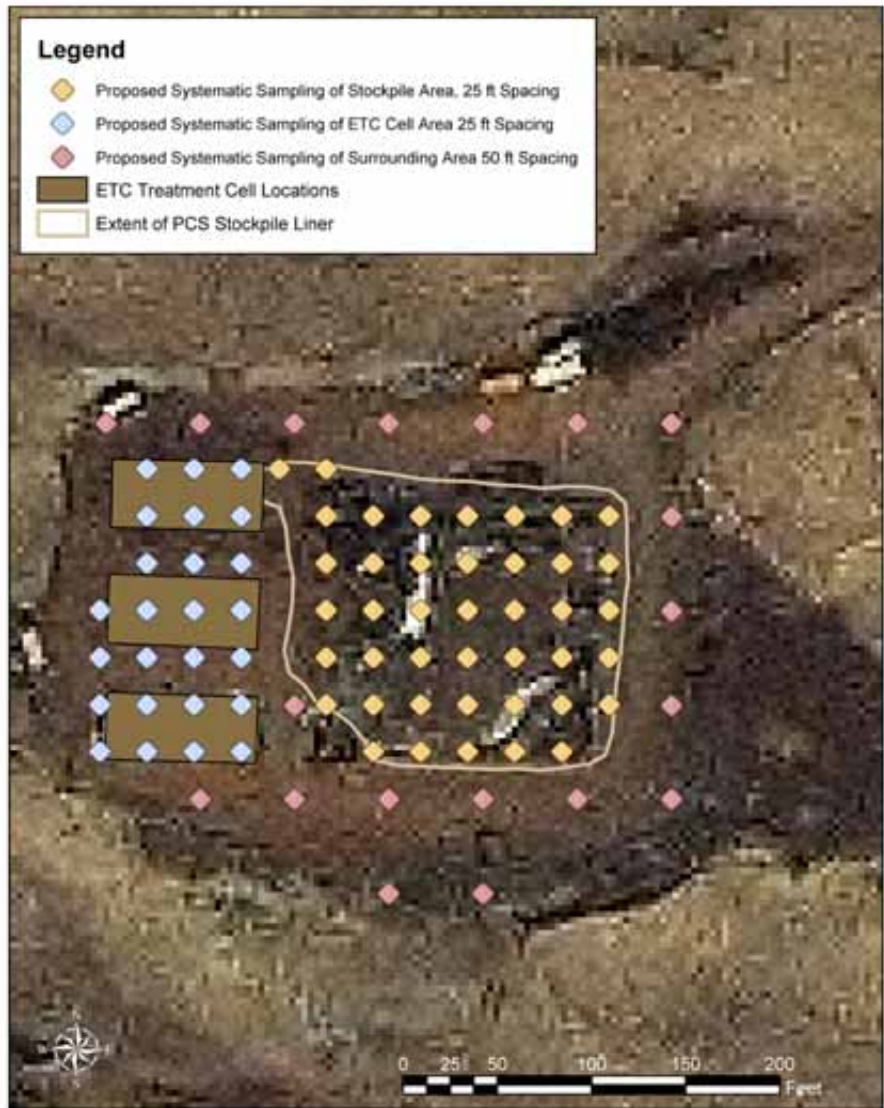
Cascade Building – Insert Figure
Here

AST Saddles – Insert Figure Here

Transportation Route for PCS Relocation

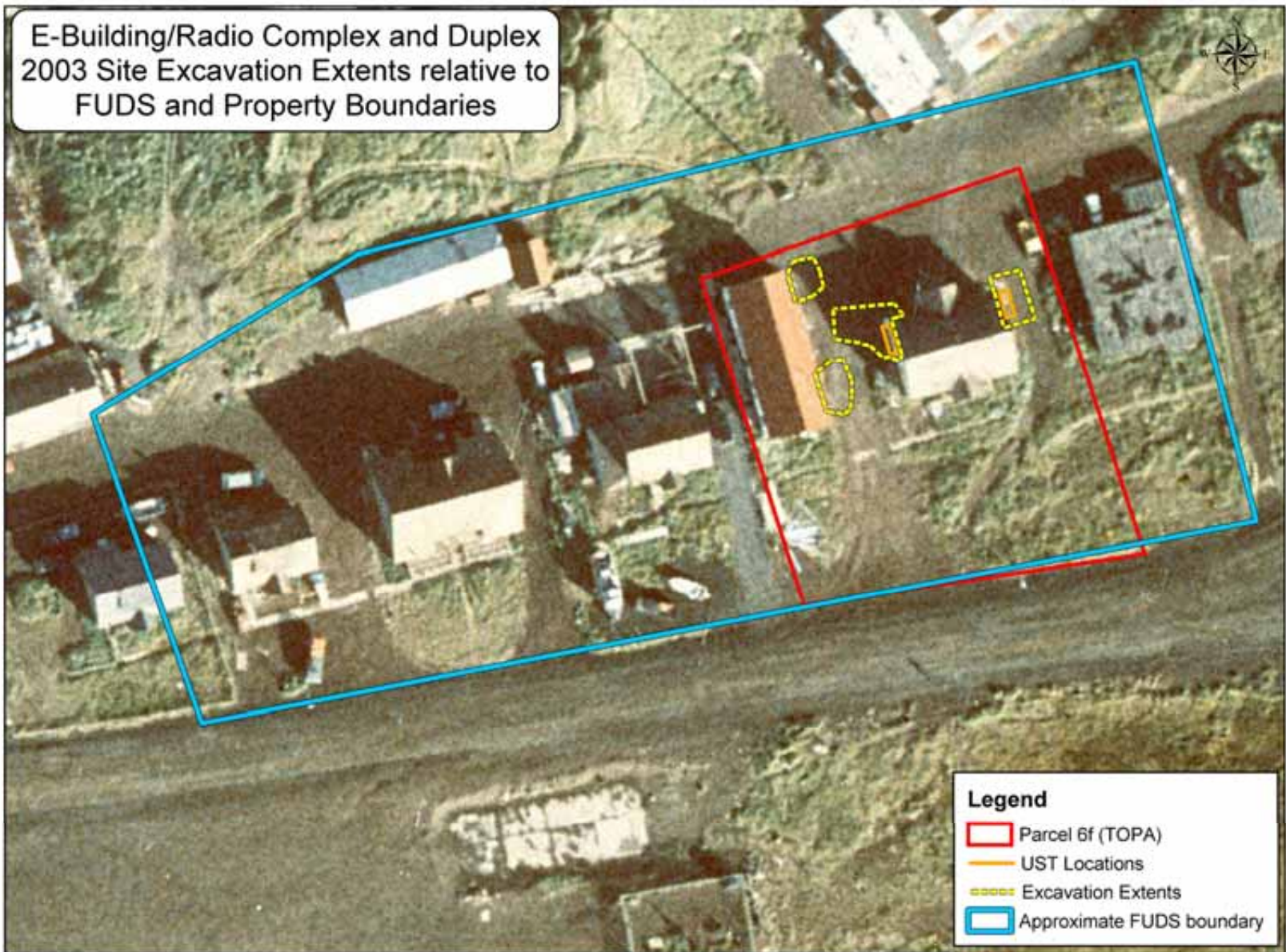
09/04/03





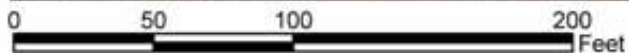
**Proposed Confirmation Sampling
for the ETC Operations at the
Blubber Dump**
09/04/03

E-Building/Radio Complex and Duplex
2003 Site Excavation Extents relative to
FUDS and Property Boundaries

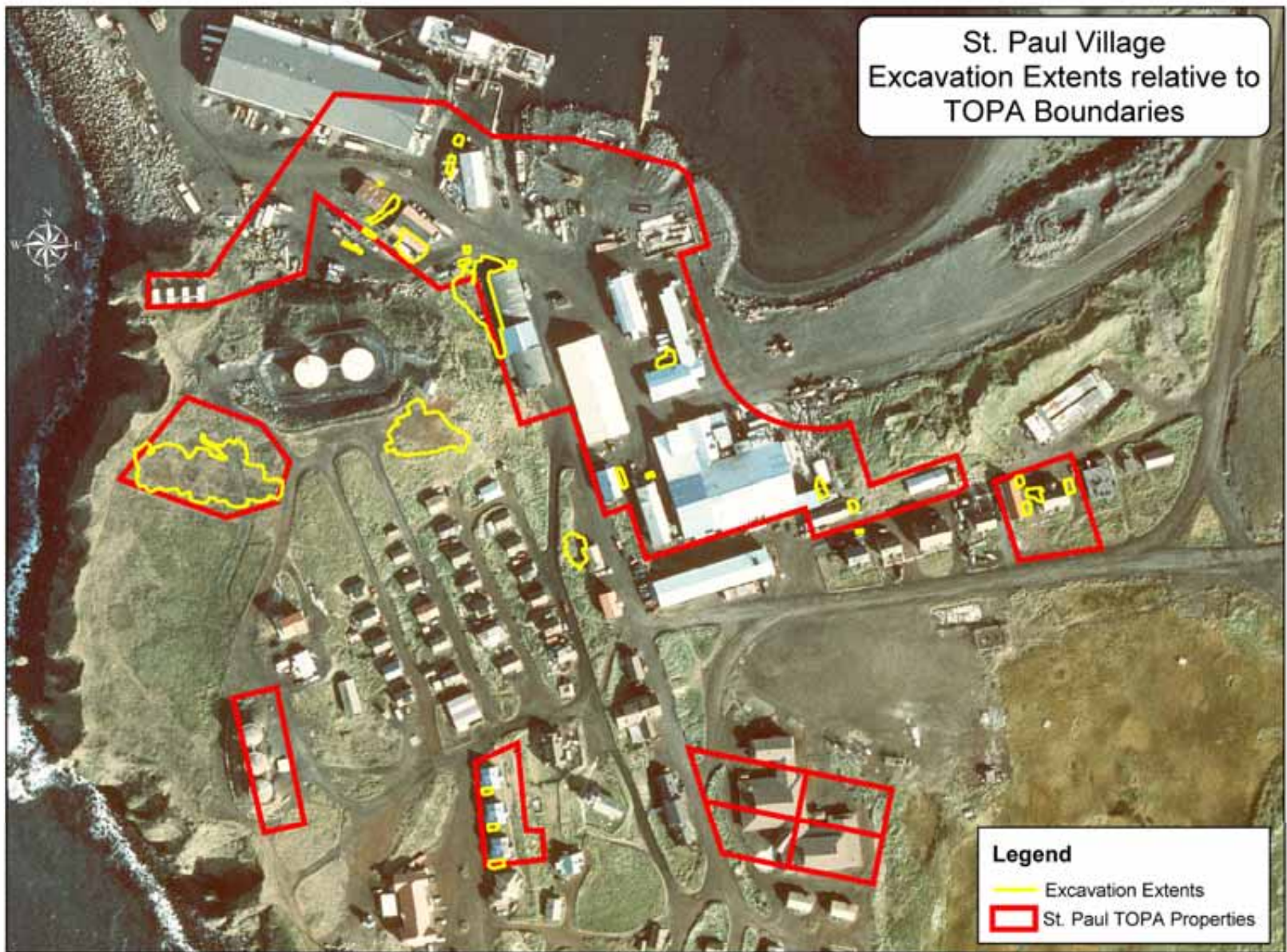


Legend

- Parcel 6f (TOPA)
- UST Locations
- Excavation Extents
- Approximate FUDS boundary



St. Paul Village
Excavation Extents relative to
TOPA Boundaries



Legend

- Excavation Extents
- St. Paul TOPA Properties

