

TPA 6 Open Pits Site

- 1996 Hart Crowser Test Pits ●
- 2002 Polar Consult Test Pits ●
- Excavation Extents
- 09/10/02 Coal Sub-Site
- Crane Sub-Site
- SE Sub-Site

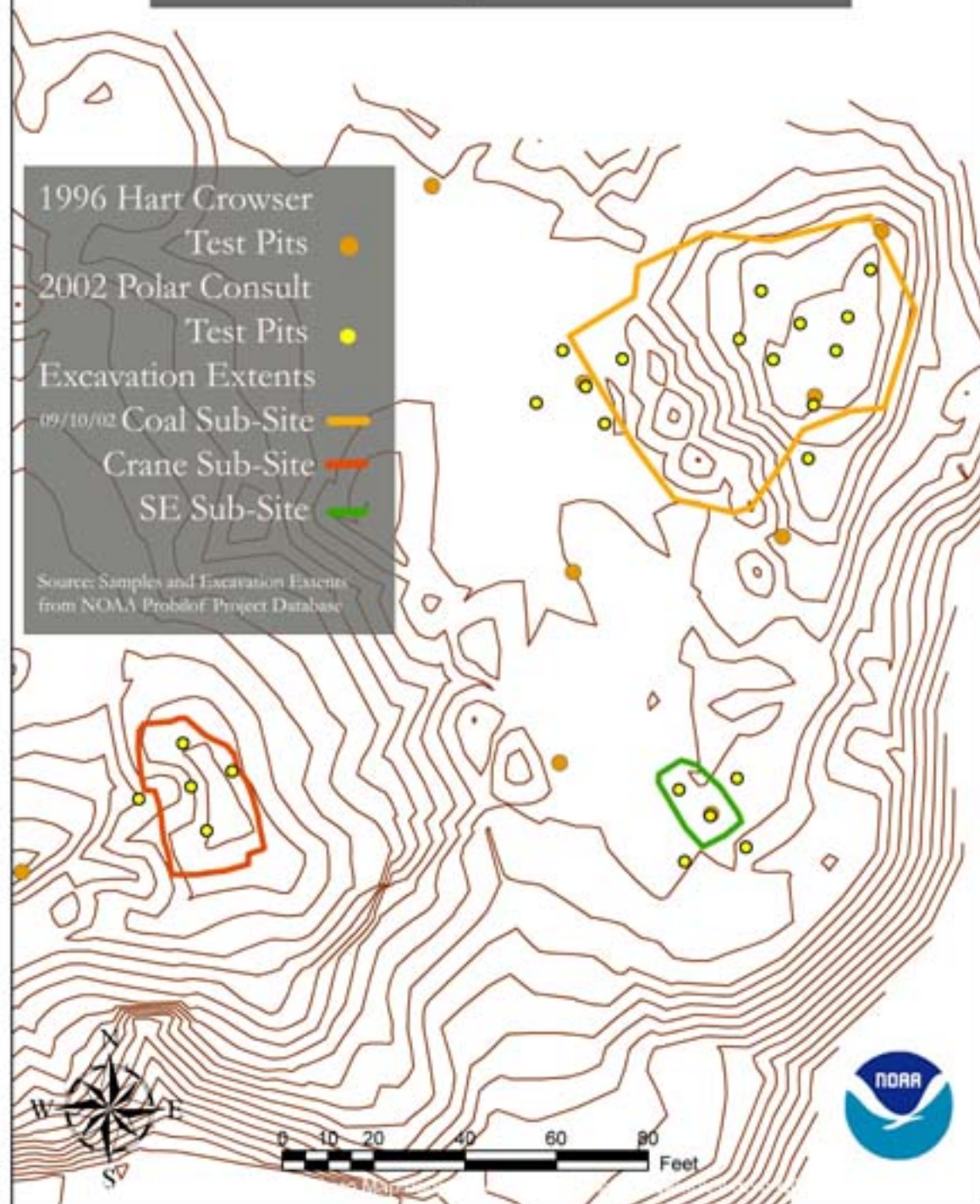
Source: Aerial Photo from Aero Map Inc.
Samples and Excavation Extents from
NOAA Probitol Project Database



0 10 20 40 60 80 Feet



TPA 6 Open Pits Site



TPA 19 Old Carpenter Shop

Polar Consult 2002 ●
TTEM 2001 ●
Hart Crowser 1996 ●
Excavation Extent —
Existing Road
Centerlines —

Source: Aerial Photo 1948 Victor
Scheffer, Samples, Roads, and
Excavation from NOAA Pruhlof
Project Database

0 5 10 20 30 40
Feet



TPA 19 Old Carpenter Shop

Polar Consult	2002	●
TTEMI	2001	●
Hart Crowser	1996	●
Excavation Extent		—
Existing Road Centerlines		—

Source: Aerial Photo 1948 Victor Scheffer, Samples, Roads, and Excavation from NOAA Pribilof Project Database

GP-7

GP-6

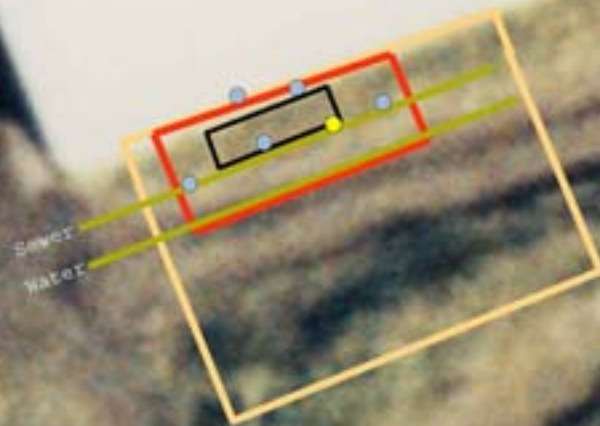
GP-1

0 2 4 8 12 16 Feet

SS-1

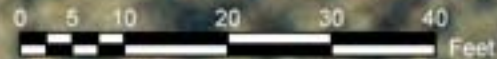


TPA 22-1 St. George School UST



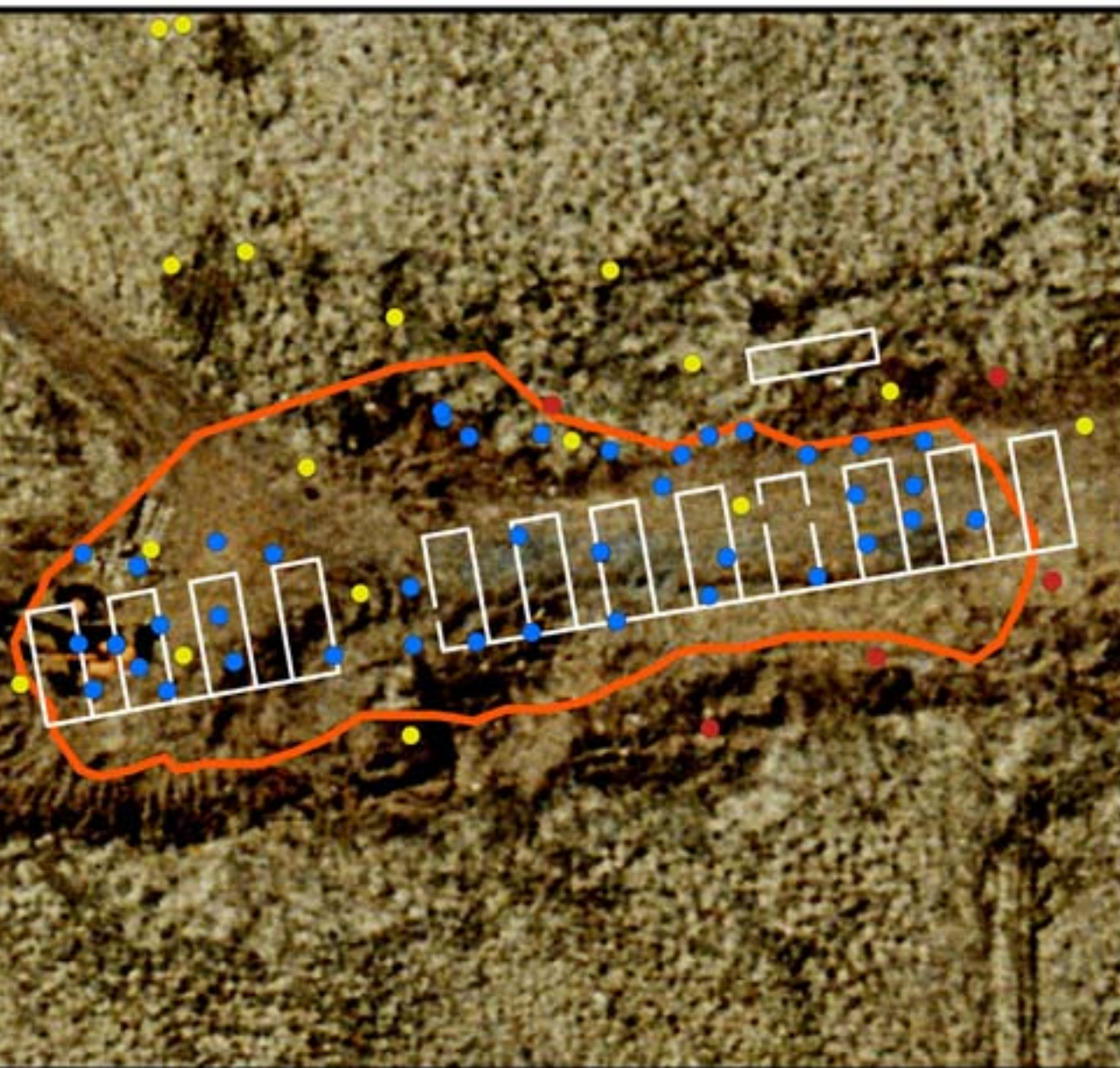
- 1997 Chadux
 - Excavation Extent
 - UST
 - Utility Lines
- 2002 Chadux
 - Excavation Extent
 - Samples Below Method 1
 - Samples Above Method 1

Source: Aerial Photo from Aero Map Inc. Samples and Line work from NOAA Pribilof Project Database



TPA 23 Abandoned Diesel Tank Farm

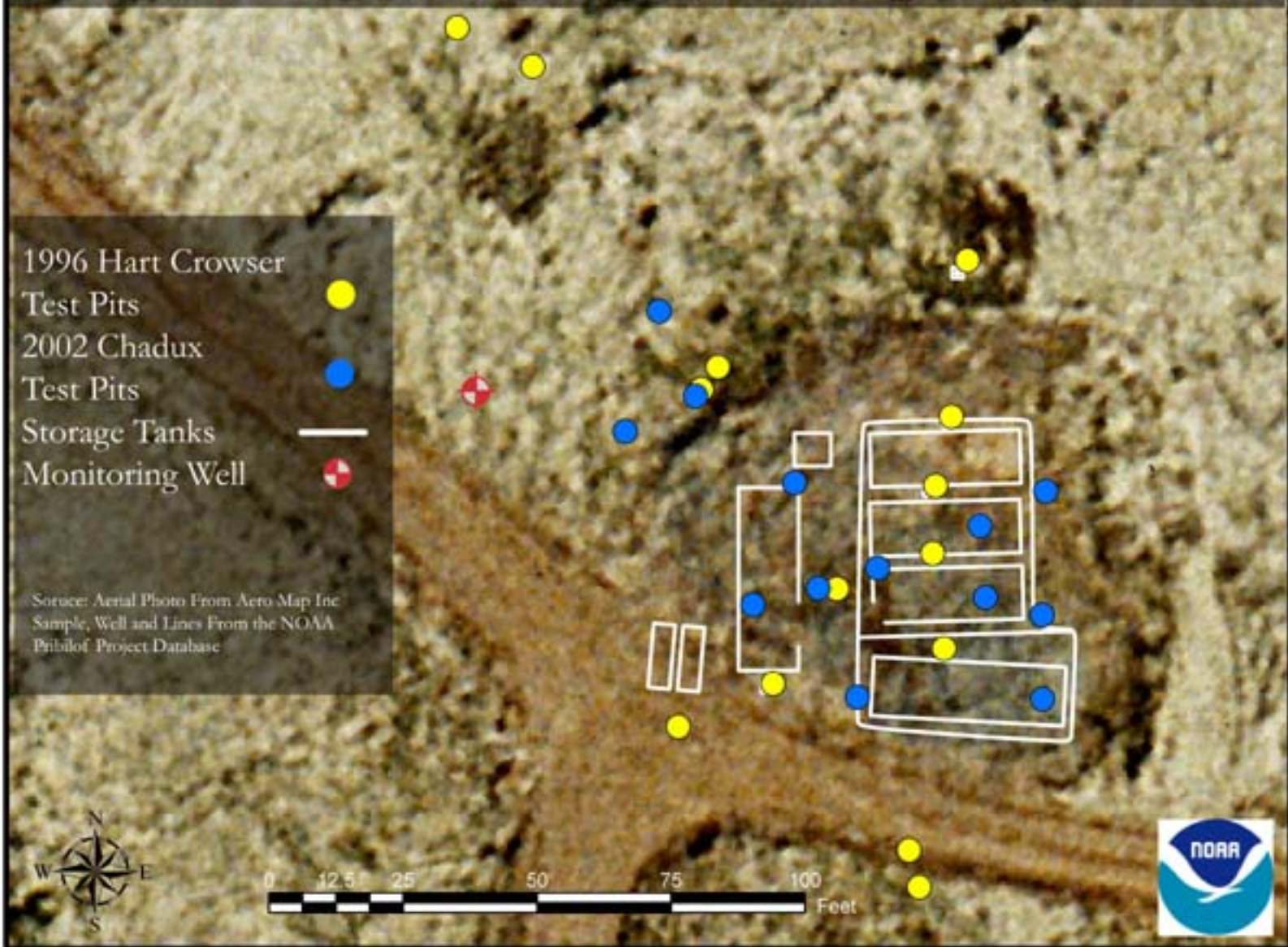
TTEMI 2001 ●
Polar Consults 1997 ●
Hart Crowser 1996 ●
Excavation Extent —
Storage Tanks —



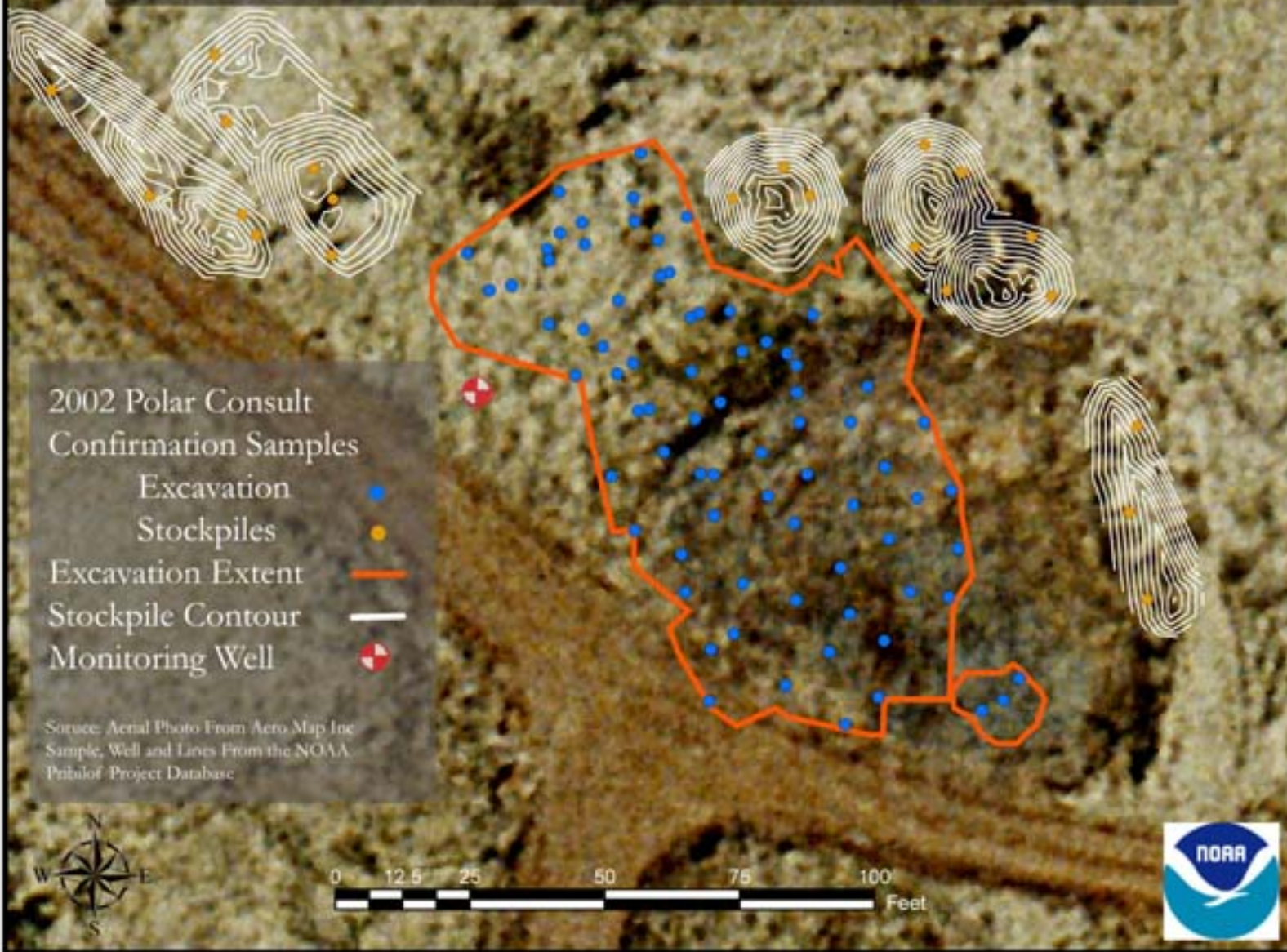
Source: Aerial Photo Purchased from Aero Map Inc., Sample Points, Excavation Extent, and additional line work is from the Pribilof Project GIS Database.



TPA 24 Inactive Gasoline Tank Farm



TPA 24 Inactive Gasoline Tank Farm



TPA 24 Inactive Gasoline Tank Farm



- Samples Exceeding Method 1 Clean-up
- ⊕ Monitoring Well

Source: Aerial Photo From Aero Map Inc
Sample, Well and Lines From the NOAA
Pribilof Project Database

