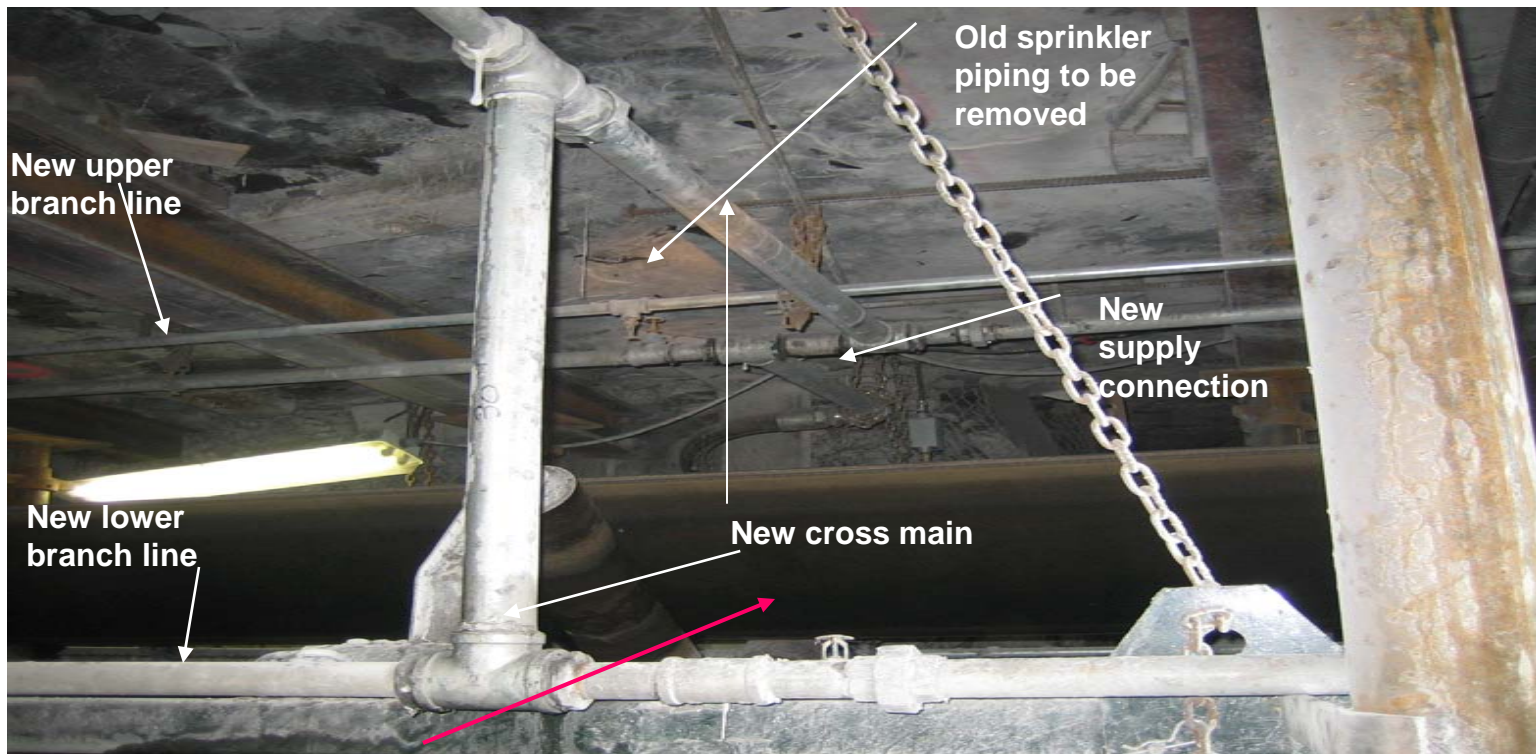


Conveyer Belt Sprinkler System



Upright sprinkler every 8 feet

BEST PRACTICES



- Galvanized steel pipes should be used instead of hoses.
- Use two branch lines, one feeding sprinklers above the top belt, the other feeding sprinklers between the top and bottom belts.
- Position the branch lines on opposite sides of the belt structure.
- Upright sprinklers should be used and installed in the upright position.
- Keep the Sprinklers free of debris and other materials that may impede their operation.