

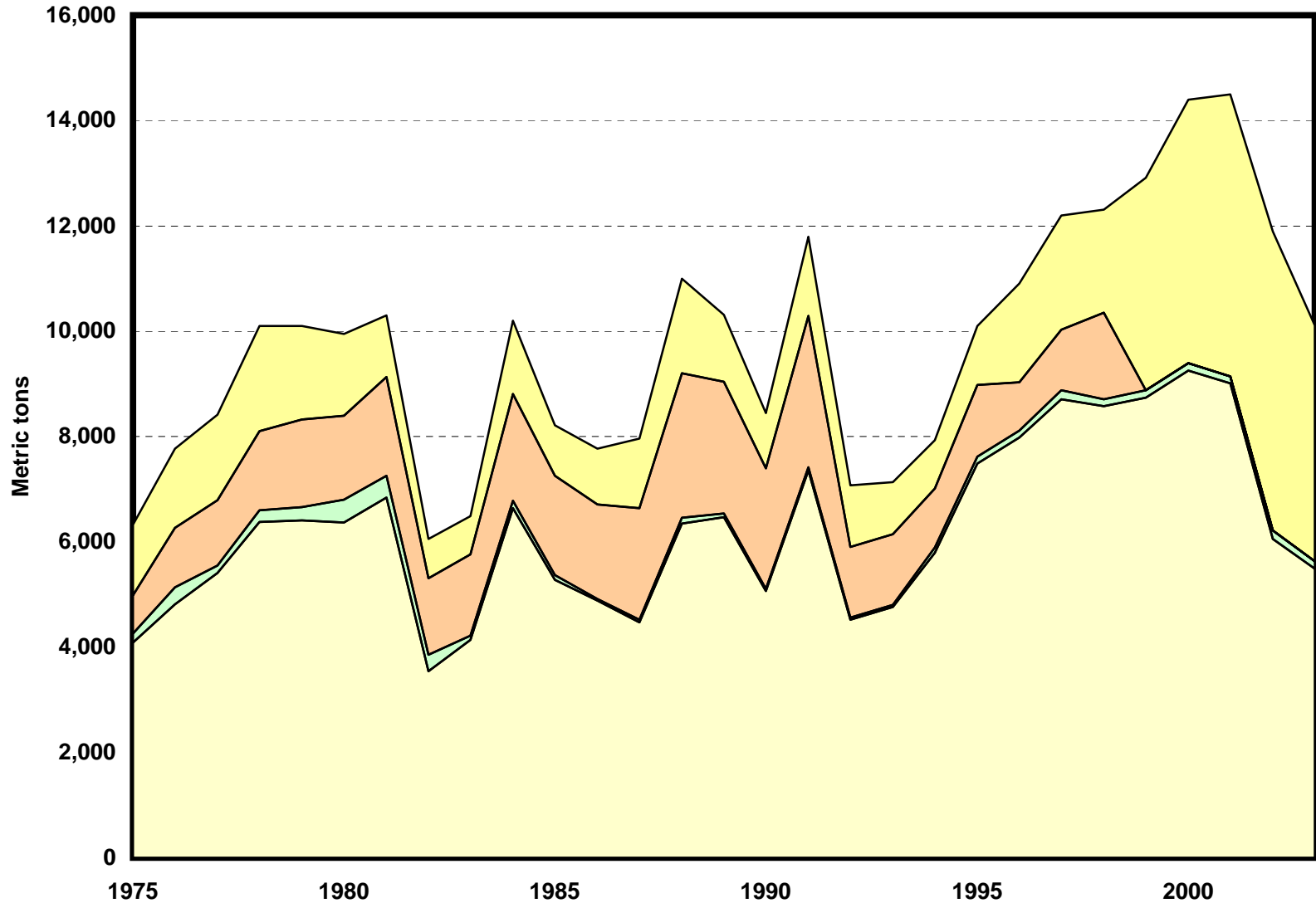
**TUNGSTEN END-USE STATISTICS<sup>1</sup>**  
**U.S. GEOLOGICAL SURVEY**  
 [Metric tons of tungsten content]  
 Last modification: September 1, 2005

| Year | Cemented carbides | Chemical uses | Mill products | Steels and other alloys | Apparent consumption |
|------|-------------------|---------------|---------------|-------------------------|----------------------|
| 1975 | 4,090             | 166           | 732           | 1,340                   | 6,330                |
| 1976 | 4,810             | 329           | 1,130         | 1,500                   | 7,770                |
| 1977 | 5,410             | 143           | 1,240         | 1,620                   | 8,400                |
| 1978 | 6,380             | 217           | 1,500         | 2,000                   | 10,100               |
| 1979 | 6,410             | 250           | 1,660         | 1,780                   | 10,100               |
| 1980 | 6,370             | 428           | 1,600         | 1,550                   | 9,940                |
| 1981 | 6,840             | 413           | 1,880         | 1,170                   | 10,300               |
| 1982 | 3,540             | 315           | 1,450         | 745                     | 6,050                |
| 1983 | 4,140             | 73            | 1,550         | 728                     | 6,480                |
| 1984 | 6,640             | 139           | 2,030         | 1,390                   | 10,200               |
| 1985 | 5,280             | 86            | 1,890         | 954                     | 8,210                |
| 1986 | 4,880             | 30            | 1,800         | 1,060                   | 7,770                |
| 1987 | 4,470             | 45            | 2,120         | 1,320                   | 7,950                |
| 1988 | 6,350             | 111           | 2,740         | 1,800                   | 11,000               |
| 1989 | 6,470             | 67            | 2,500         | 1,270                   | 10,300               |
| 1990 | 5,060             | 49            | 2,290         | 1,040                   | 8,440                |
| 1991 | 7,350             | 65            | 2,870         | 1,510                   | 11,800               |
| 1992 | 4,520             | 42            | 1,340         | 1,170                   | 7,080                |
| 1993 | 4,760             | 37            | 1,350         | 981                     | 7,120                |
| 1994 | 5,790             | 99            | 1,120         | 917                     | 7,930                |
| 1995 | 7,490             | 130           | 1,360         | 1,120                   | 10,100               |
| 1996 | 7,980             | 129           | 918           | 1,880                   | 10,900               |
| 1997 | 8,710             | 171           | 1,150         | 2,170                   | 12,200               |
| 1998 | 8,580             | 125           | 1,650         | 1,950                   | 12,300               |
| 1999 | 8,740             | 137           | <sup>2</sup>  | 4,030                   | 12,900               |
| 2000 | 9,250             | 138           | <sup>2</sup>  | 5,010                   | 14,400               |
| 2001 | 9,010             | 128           | <sup>2</sup>  | 5,360                   | 14,500               |
| 2002 | 6,050             | 167           | <sup>2</sup>  | 5,680                   | 11,900               |
| 2003 | 5,490             | 136           | <sup>2</sup>  | 4,480                   | 10,100               |

<sup>1</sup>Compiled by G.R. Matos, and K.B. Shedd.

<sup>2</sup>Included with steels and other alloys.

# End Uses of Tungsten



□ Cemented carbides □ Chemical uses □ Mill products □ Steels and other alloys

## Tungsten End-Use Worksheet Notes

### Data Source

The source of data for the tungsten end-use worksheet is the Minerals Yearbook, an annual collection, compilation, and analysis of mineral industry data, published by the U.S. Bureau of Mines and the U.S. Geological Survey.

### End Use

End use is defined as the use of the mineral commodity in a particular industrial sector or product. End-use estimates are derived by applying calculated percentages of end-use consumption to the calculated U.S. apparent consumption; actual consumption may be greater or less. For tungsten, end-use categories are cemented carbides, chemical uses, mill products, and steels and other alloys.

### References

U.S. Bureau of Mines, 1977–96, Minerals Yearbook, v. I, 1975–94.

U.S. Geological Survey, 1997–2005, Minerals Yearbook, v. I, 1995–2003.

### Recommended Citation Format:

(1) If taken from CD version:

U.S. Geological Survey, [year of last update, e.g., 2005], [Mineral commodity, e.g., Gold] statistics, *in* Kelly, T.D., and Matos, G.R., comps., Historical statistics for mineral and material commodities in the United States: U.S. Geological Survey Data Series 140, one CD-ROM. (Also available online at <http://pubs.usgs.gov/ds/2005/140/>.)

(2) If taken from online version:

U.S. Geological Survey, [year of last update, e.g., 2005], [Mineral commodity, e.g., Gold] statistics, *in* Kelly, T.D., and Matos, G.R., comps., Historical statistics for mineral and material commodities in the United States: U.S. Geological Survey Data Series 140, available online at <http://pubs.usgs.gov/ds/2005/140/>. (Accessed [date].)

**For more information, please contact:**

[USGS Tungsten Commodity Specialist](#)