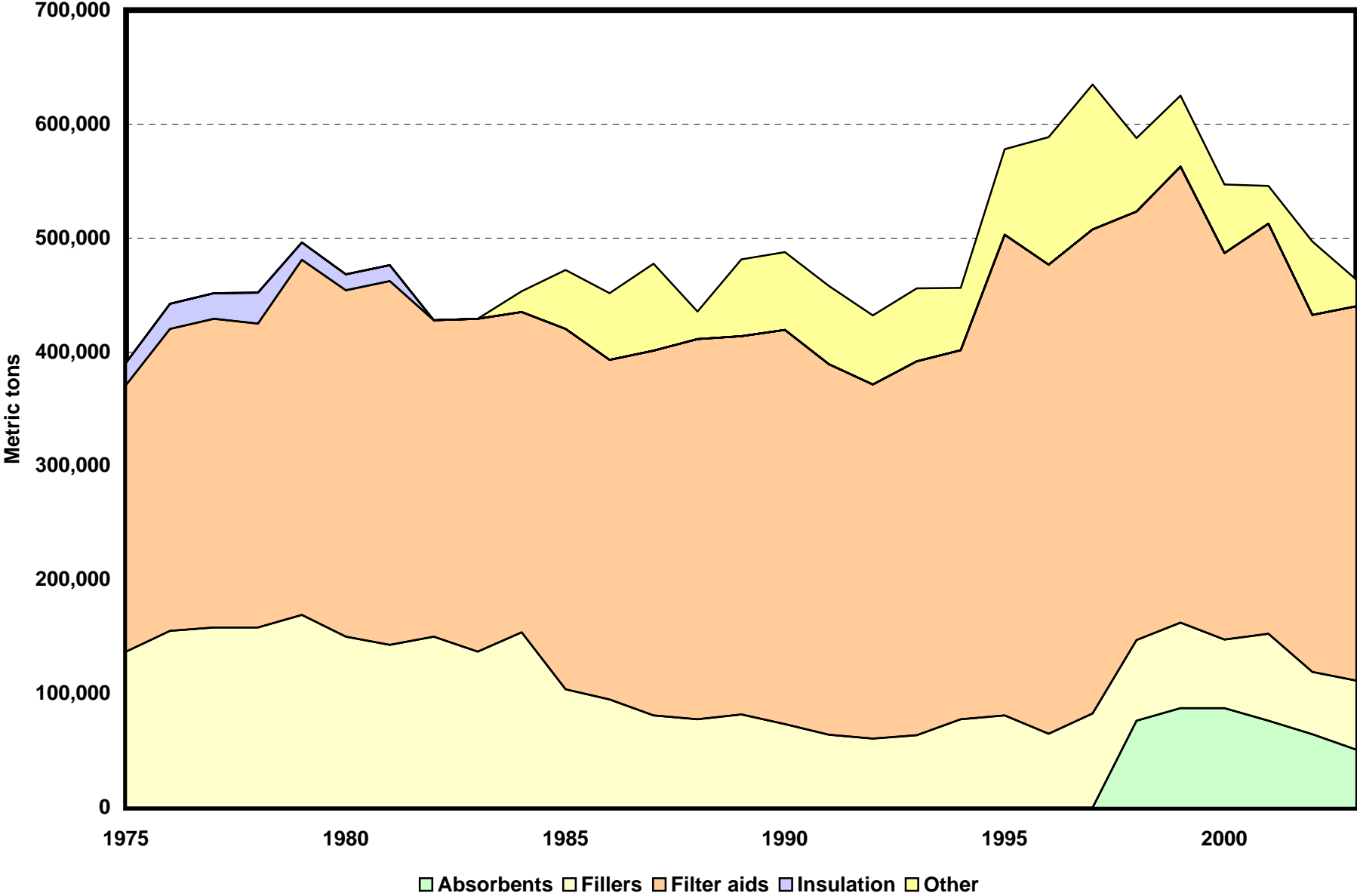


DIATOMITE END-USE STATISTICS¹
U.S. GEOLOGICAL SURVEY
[Metric tons]
Last modification: September 15, 2005

Year	Absorbents	Fillers	Filter aids	Insulation	Other	Apparent consumption
1975		137,000	234,000	19,500		390,000
1976		155,000	265,000	22,100		442,000
1977		158,000	271,000	22,600		451,000
1978		158,000	267,000	27,100		452,000
1979		169,000	312,000	14,900		496,000
1980		150,000	304,000	14,000		468,000
1981		143,000	319,000	14,300		476,000
1982		150,000	278,000			428,000
1983		137,000	292,000			429,000
1984		154,000	281,000		18,200	454,000
1985		104,000	316,000		51,900	472,000
1986		94,900	298,000		58,800	452,000
1987		81,100	320,000		76,300	477,000
1988		77,400	334,000		24,200	436,000
1989		81,800	332,000		67,300	481,000
1990		73,200	346,000		68,300	488,000
1991		64,100	325,000		68,700	458,000
1992		60,500	311,000		60,500	432,000
1993		63,800	328,000		63,800	456,000
1994		77,500	324,000		54,700	456,000
1995		80,900	422,000		75,100	578,000
1996		64,700	412,000		112,000	588,000
1997		82,600	425,000		127,000	635,000
1998	76,400	70,600	376,000		64,700	588,000
1999	87,500	75,000	400,000		62,500	625,000
2000	87,500	60,200	339,000		60,200	547,000
2001	76,400	76,400	360,000		32,800	546,000
2002	64,600	54,700	313,000		64,600	497,000
2003	51,000	60,300	329,000		23,200	464,000

¹ Compiled by G.R. Matos and A. Founie.

End Uses of Diatomite



Diatomite End-Use Worksheet Notes

Data Sources

The sources of data for the diatomite end-use worksheet are the Commodity Data Summaries and the Mineral Commodity Summaries, annual mineral statistics publications of the U.S. Bureau of Mines and the U.S. Geological Survey.

End Use

End use is defined as the use of the mineral commodity in a particular industrial sector or product. End-use estimates are derived by applying the reported percentages of end-use consumption to the calculated U.S. apparent consumption; actual consumption may be greater. For diatomite, end-use categories are absorbents, fillers, filter aids, insulation, and other industrial uses.

From 1975 through 1983, fillers included industrial fillers and other miscellaneous uses. After 1983, other uses were reported as a separate category. Before 1998, absorbents were included in the other uses category.

Blank cells in the spreadsheet indicate that data were not available. Data are rounded to no more than three significant digits; data may not add to totals shown.

References

U.S. Bureau of Mines, 1975–77, Commodity Data Summaries, 1975–77.

U.S. Bureau of Mines, 1978–95, Mineral Commodity Summaries, 1978–95.

U.S. Geological Survey, 1997–2005, Mineral Commodity Summaries, 1997–2005.

U.S. Geological Survey and U.S. Bureau of Mines, 1996, Mineral Commodity Summaries, 1996.

Recommended Citation Format:

(1) If taken from CD version:

U.S. Geological Survey, [year of last update, e.g., 2005], [Mineral commodity, e.g., Gold] statistics, *in* Kelly, T.D., and Matos, G.R., comps., Historical statistics for mineral and material commodities in the United States: U.S. Geological Survey Data Series 140, one CD-ROM. (Also available online at <http://pubs.usgs.gov/ds/2005/140/>.)

(2) If taken from online version:

U.S. Geological Survey, [year of last update, e.g., 2005], [Mineral commodity, e.g., Gold] statistics, *in* Kelly, T.D., and Matos, G.R., comps., Historical statistics for mineral and material commodities in the United States: U.S. Geological Survey Data Series 140, available online at <http://pubs.usgs.gov/ds/2005/140/>. (Accessed [date].)

For more information, please contact:

[USGS Diatomite Commodity Specialist](#)