



Wind Energy Program Technology Portfolio

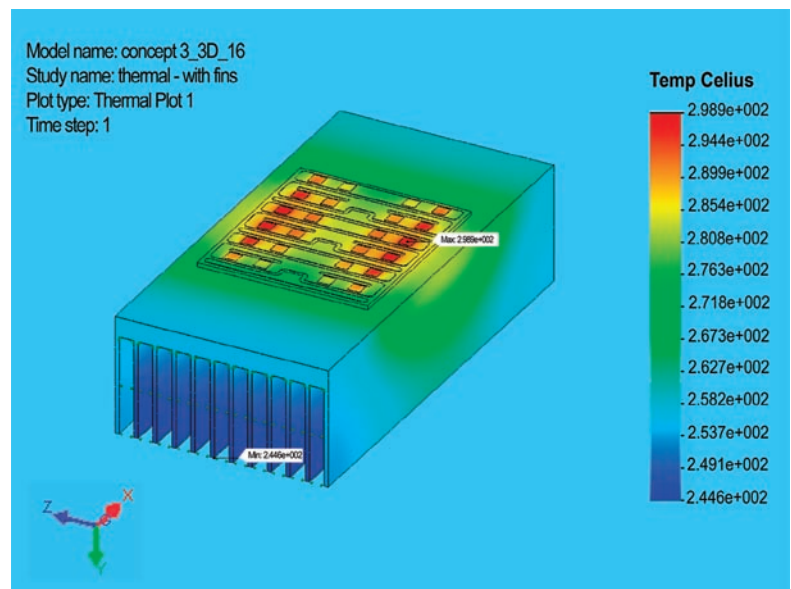
Low Wind Speed Technology Phase II: Breakthrough in Power Electronics from Silicon Carbide

Peregrine Power LLC

Project Description: All commonly used power semiconductors in power converters today are based on standard silicon technology. These have numerous limitations that power electronics designers work around. Newer designs in wind turbine drive trains will increasingly depend on such power converters to allow full power conversion and variable speed. Silicon carbide (SiC) has much better performance characteristics, including:

- Lower resistance and conduction losses
- Faster and cleaner turn-on and turn-off characteristics that result in much lower switching losses
- Much higher dielectric constant, which permits higher voltage applications
- Much higher thermal conductivity
- Much higher operating temperatures (662°F [350°C] or higher)
- Much greater ruggedness and reliability
- Positive feedback as to resistance, which automatically causes current to be shared well among parallel SiC dies to achieve higher currents.

This project will perform baseline characterization of SiC chips to determine their operating characteristics. Based on these data, some preliminary designs and cost estimates will be developed to determine SiC's potential impact on wind turbine power converter designs, efficiency, and operating costs.



Finite element modeling (FEM) of the thermal profile of a power module.

Project Type: Conceptual Design Study
Total Project Budget: \$199,849
Industry Cost Share: \$0
DOE Cost Share: \$199,849
Planned Project Duration: May 2004–July 2005

Contacts:

NREL/Sandia:

Alan Laxson, NREL
 1617 Cole Blvd.
 Golden, Colorado 80401
 303-384-6944
 alan_laxson@nrel.gov

Peregrine Power:

Dallas Marckx, Peregrine Power LLC
 27350 SW 95th Ave., Suite 3030
 Wilsonville, Oregon 97070
 503-682-7001
 dmarckx@peregrinepower.com

Current Status: Project Complete

A Strong Portfolio for a Strong America • Energy efficiency and clean, renewable energy will mean a stronger economy, a cleaner environment, and greater energy independence for America. Working with a wide array of state, community, industry, and university partners, the U.S. Department of Energy's Office of Energy Efficiency and Renewable Energy invests in a diverse portfolio of energy technologies.

For more information contact EERE Information Center • 1-877-EERE-INF (1-877-337-3463) • www.eere.energy.gov

Produced for the U.S. Department of Energy by the National Renewable Energy Laboratory, a DOE national laboratory

Printed with a renewable-source ink on paper containing at least 50% wastepaper, including 10% post consumer waste.