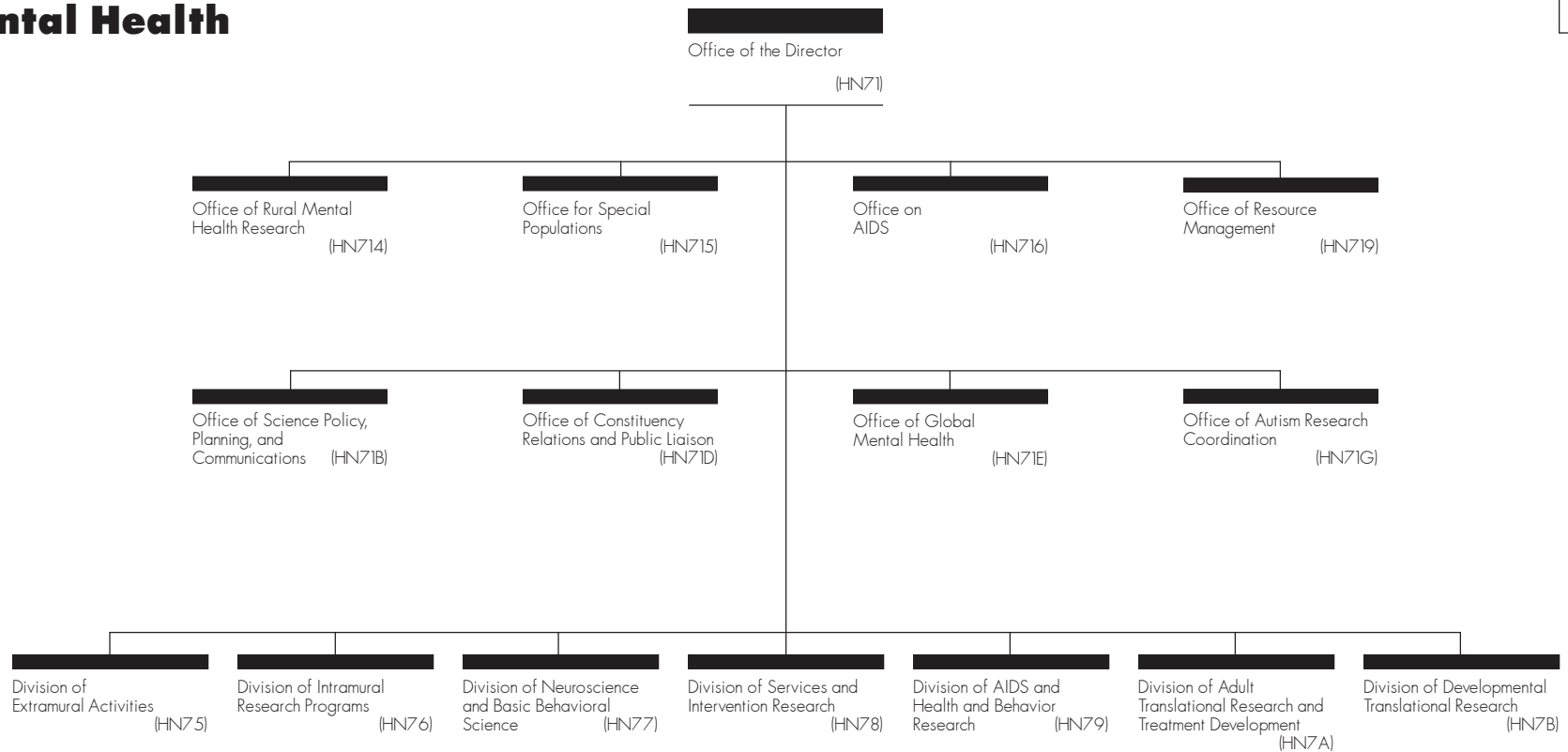
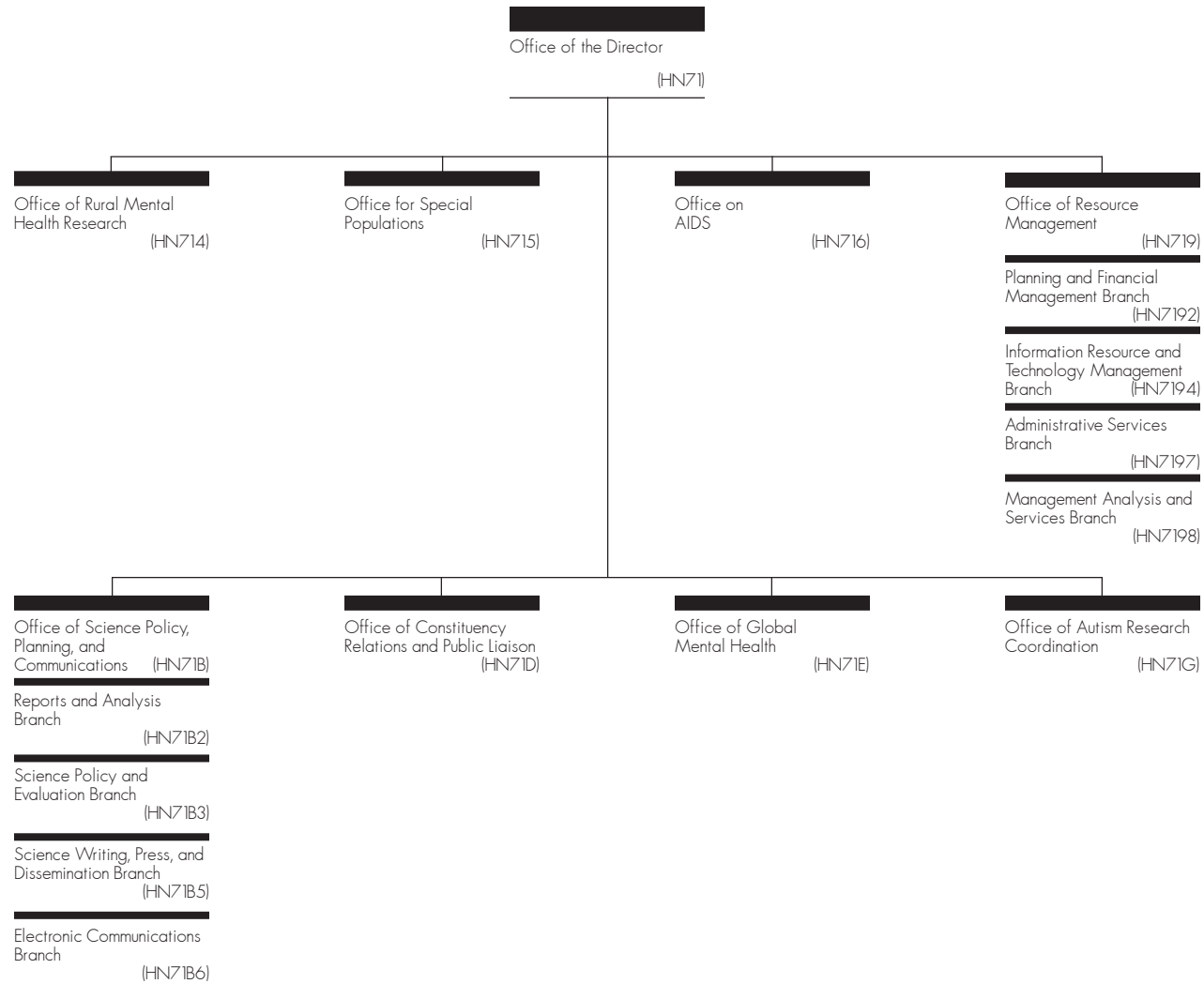


National Institute of Mental Health

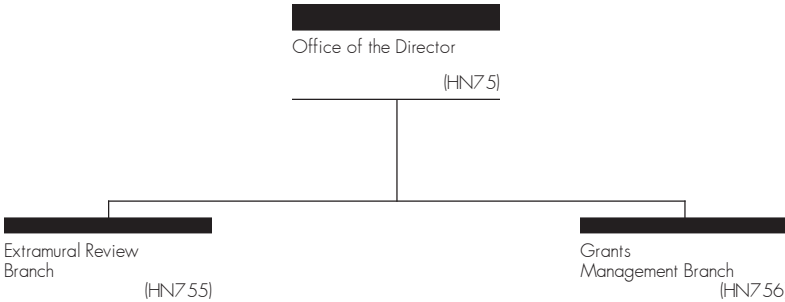


- Provides leadership for a national program to increase knowledge and advance effective strategies to deal with problems and issues in the promotion of mental health and the prevention and treatment of mental illness;
- Conducts and supports research and research training on the biological, psychological, behavioral, epidemiological, legal and social science aspects of mental health and illness;
- Conducts and supports mental health services research concerned with the impact of the organization, financing, and management of health services on the quality, cost, access to, and outcomes of care;
- Provides assistance to, and encourages other Federal agencies and national, foreign, State, and local organizations, hospitals, professional associations, and volunteer groups to facilitate and extend programs to promote mental health and prevent mental illness;
- Collects, analyzes, and disseminates scientific findings and data on the incidence, prevalence, and resources for the treatment of mental illness; and
- Conducts educational activities, including the collection and dissemination of educational materials concerned with mental health issues for health professionals and the lay public.

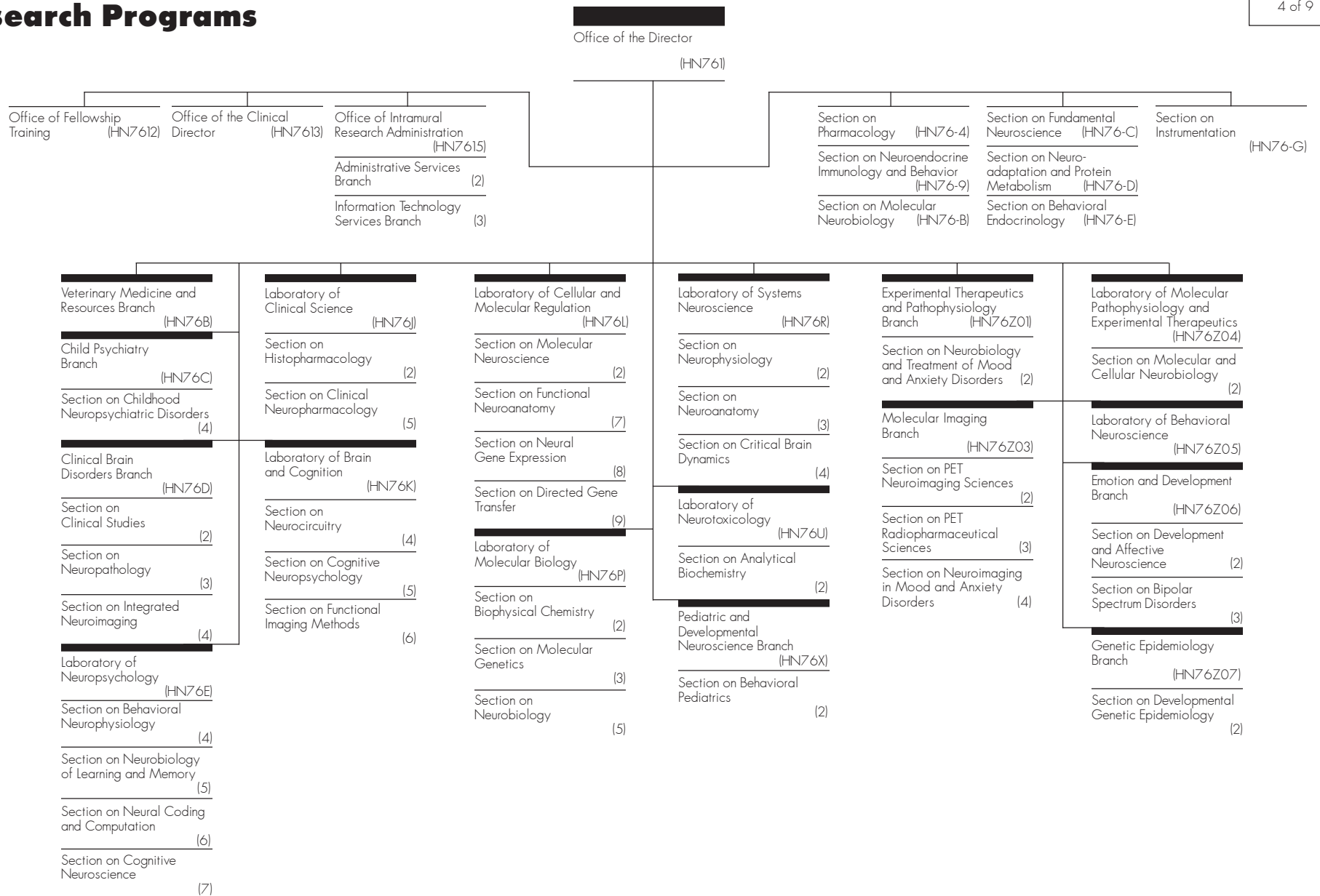
Office of the Director



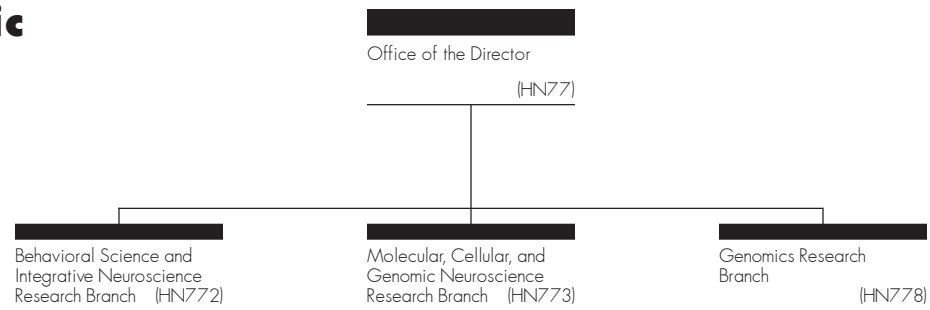
Division of Extramural Activities



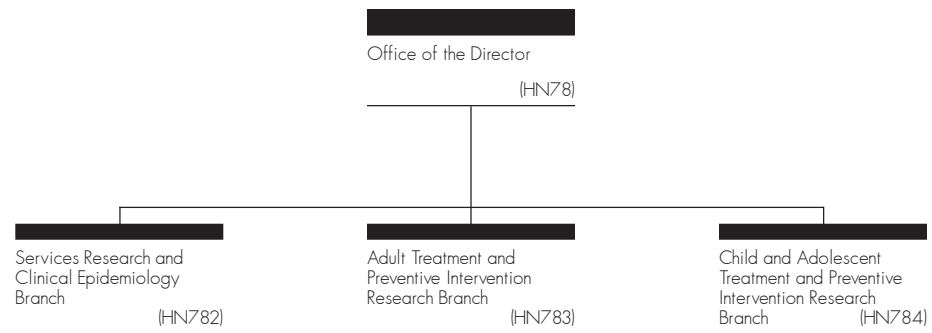
Division of Intramural Research Programs



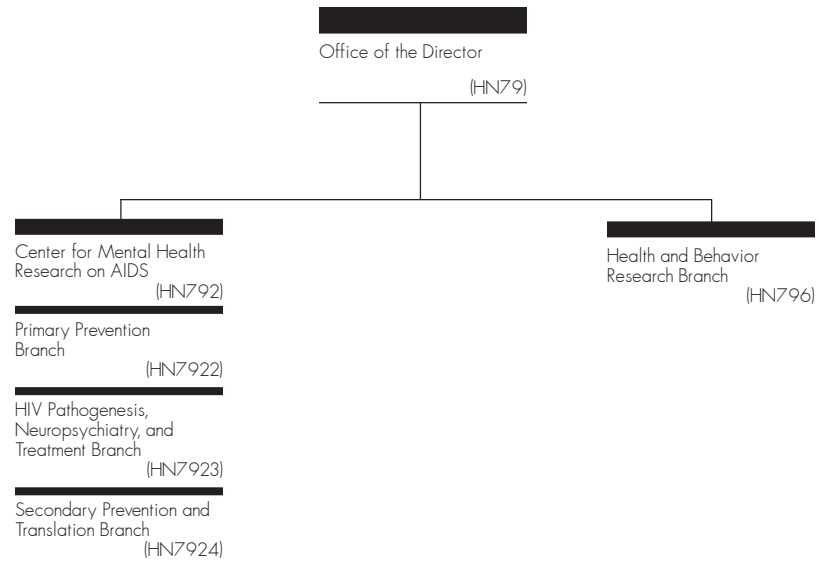
Division of Neuroscience and Basic Behavioral Science



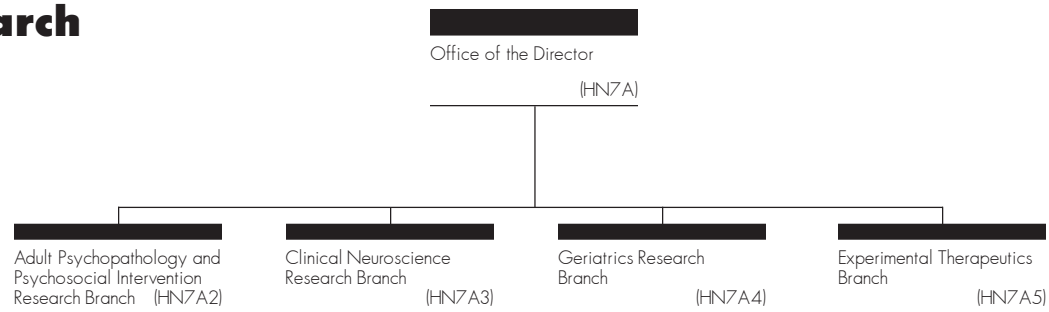
Division of Services and Intervention Research



Division of AIDS and Health and Behavior Research



Division of Adult Translational Research and Treatment Development



Division of Developmental Translational Research

