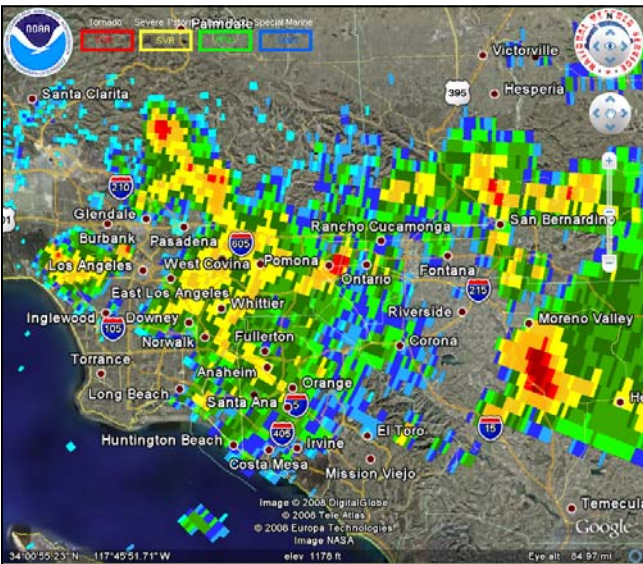


The National Weather Service Hysplit air dispersion model output can be provided in a GIS format for use and display with local geospatial data sets. This example shows the Hysplit output for a sample scenario near Oxnard, CA.



NWS Radar overlaid on Google Earth. Active watch's and warning's can also be overlaid on Google Earth. Google Earth Image

NWS MISSION

The NWS mission is to provide weather, water, and climate forecasts and warnings for the United States, its territories, adjacent waters, and ocean areas for the protection of life and property, and the enhancement of the national economy.



The National Weather Service (NWS) is a federal agency under the National Oceanic and Atmospheric Administration (NOAA), which is part of the Department of Commerce (DOC).

NOAA/National Weather Service
Weather Forecast Office Los Angeles/Oxnard
520 North Elevar Street
Oxnard, California 93030

(805) 988-6615

www.weather.gov/losangeles

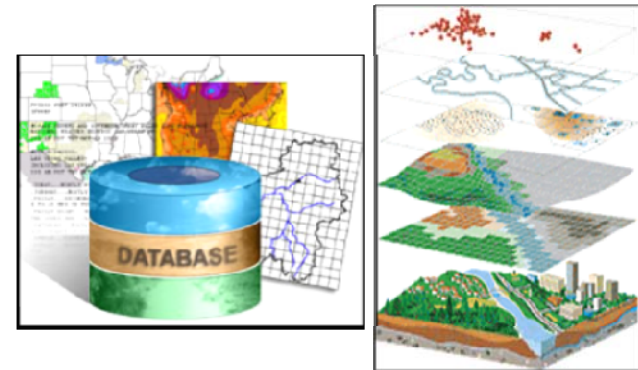
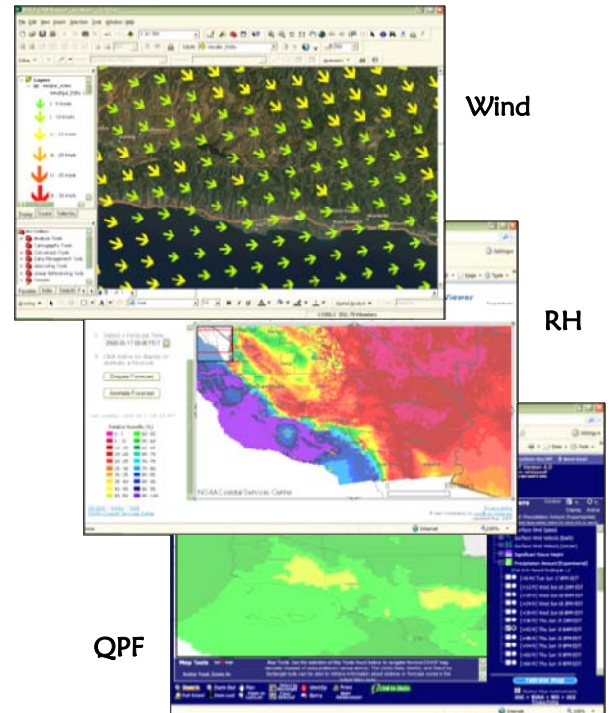
NATIONAL WEATHER SERVICE



GIS



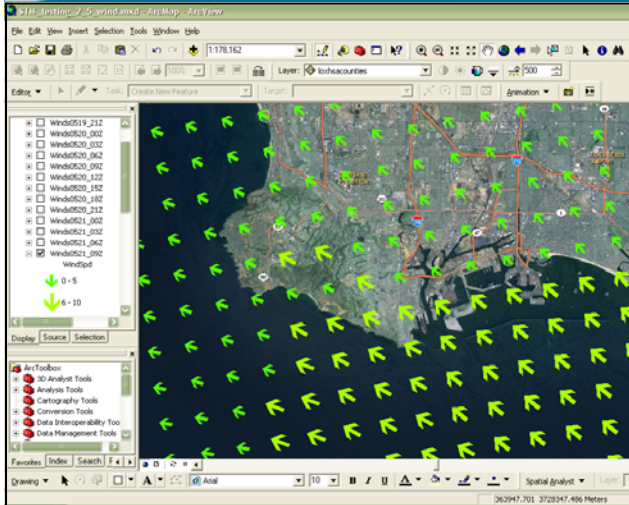
FOR SOUTHERN CALIFORNIA



Providing geospatial weather data since 1870

National Weather Service Data Available in GIS Formats

www.weather.gov 



Sample NDFD Wind Speed and Wind Direction Forecast near Long Beach, CA for May 21, 2008.

National Digital Forecast Database (NDFD) in Shapefile Format

Gridded forecasts are made up of unique values at every 5 km, or roughly boxes 3 miles on each side. Forecast elements, that include maximum and minimum temperature, wind speed and direction, relative humidity, and quantitative precipitation forecast are available at this service and can be overlaid on your own existing shapefiles for your area of interest. This will provide you with greater flexibility to use National Weather Service forecast data specifically to fit your needs.

www.wrh.noaa.gov/lox/gis/shape.php

www.wrh.noaa.gov/gis/

www.nws.noaa.gov/ndfd/

Watches, Warnings & Advisories

- PNG / GIF / World Files
- CAP
- Shapefiles
- KML
- XML

Weather Forecast Data — NDFD (National Digital Forecast Database)

- GRIB2
- Shapefiles
- XML
- WFS

WSR-88D NEXRAD Radar Imagery

- GIF / World Files
- KML
- Shapefiles
- netCDF
- WMS

Tropical Storms and Hurricanes

- Shapefiles
- WFS
- WMS

Flash Flood Guidance (FFG)

- Shapefiles

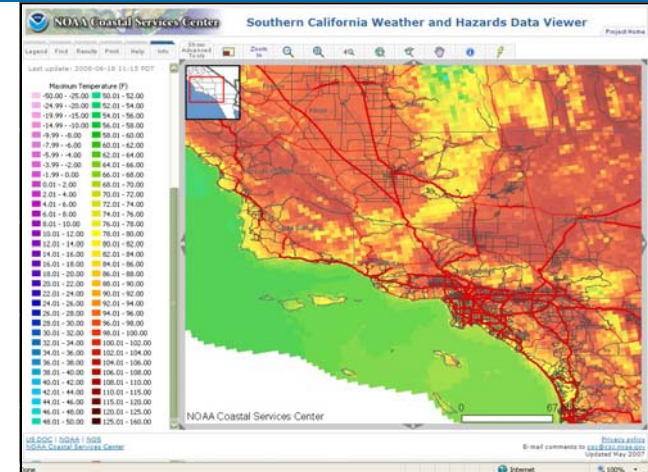
High Resolution Precipitation Estimates

- GIF / World Files
- Shapefiles
- netCDF

Climate Data

- Shapefiles

www.weather.gov/gis



Southern California Weather and Hazards Data Viewer displaying a maximum temperature forecast.

Southern California Weather and Hazards Data Viewer - Image Service -

The Southern California Weather and Hazards Data Viewer gives users access to weather forecasts and GIS hazards planning data as a GIS Internet map server application to ensure data and analyses sharing capabilities with other decision makers. The forecast weather information is provided by the National Oceanic and Atmospheric Administration (NOAA) National Weather Service National Digital Forecast Database (NDFD).

http://maps.csc.noaa.gov/CSP_SoCal/

Additionally visit:
<http://nowcast.noaa.gov>