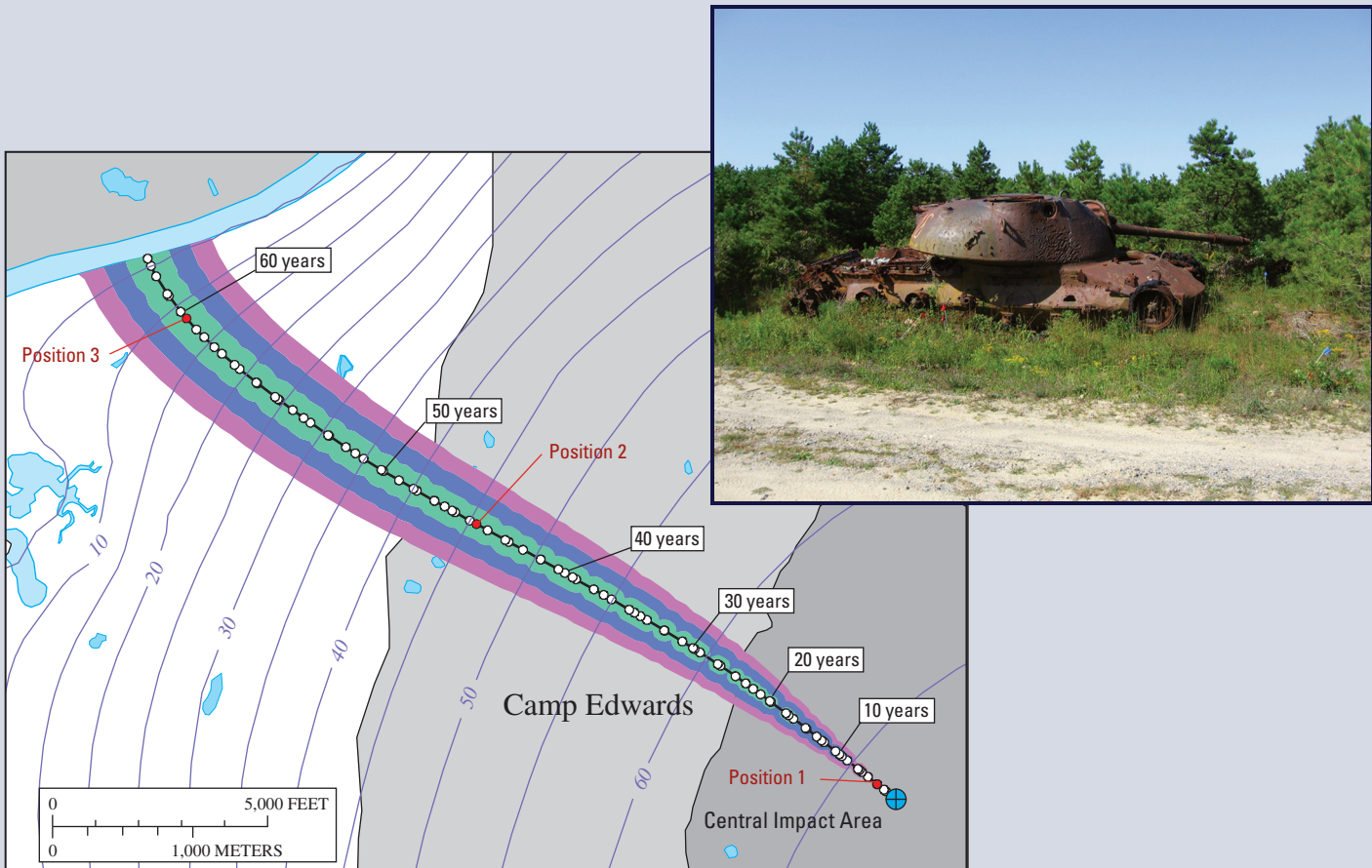


Prepared in cooperation with the
Impact Area Groundwater Study Program of the
National Guard Bureau and U.S. Army Environmental Command

Use of Inverse-Modeling Methods to Improve Ground-Water-Model Calibration and Evaluate Model-Prediction Uncertainty, Camp Edwards, Cape Cod, Massachusetts



Scientific Investigations Report 2007-5257

Cover. Left, map showing forward particle tracks and advective transport positions with 68-, 95-, and 99-percent linear confidence intervals; and right, photograph showing a tank used for artillery practice near the Central Impact Area, Camp Edwards, Massachusetts Military Reservation, Cape Cod, Massachusetts.

Prepared by the Pembroke Publishing Service Center.

For more information concerning this report, contact:

Director
U.S. Geological Survey
Massachusetts-Rhode Island Water Science Center
10 Bearfoot Road
Northborough, MA 01532
dc_ma@usgs.gov

or visit our Web site at:
<http://ma.water.usgs.gov>

