

# Characterizing Electrolyzer Performance for Use in Wind Energy Applications

Kevin W. Harrison  
Benjamin Kroposki  
Christopher Pink

National Renewable Energy Laboratory

Presented at the American Wind Energy Association's (AWEA) WINDPOWER Annual Conference  
in Pittsburgh, Pennsylvania, June 4-7, 2006.

## Disclaimer and Government License

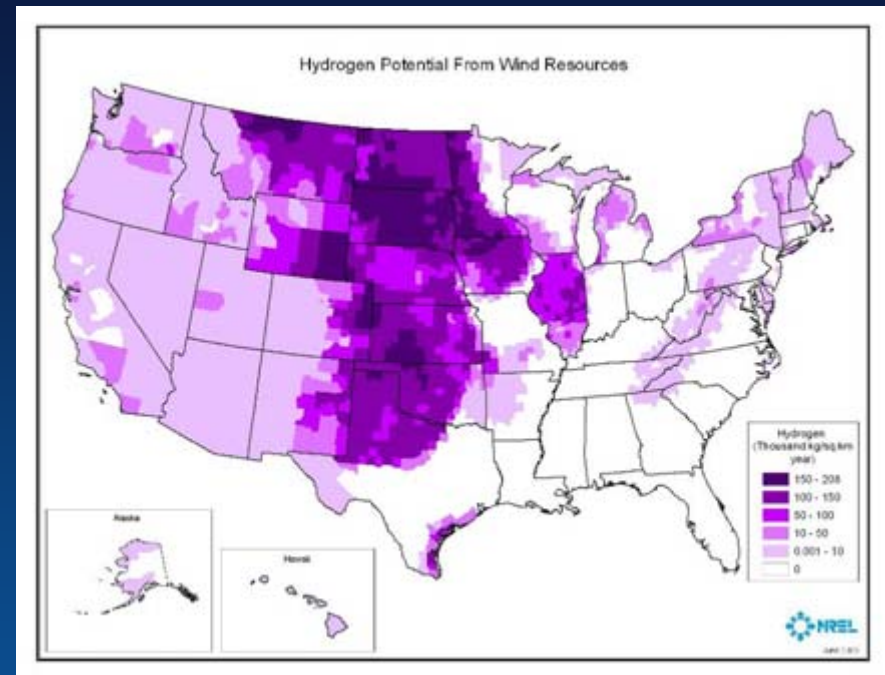
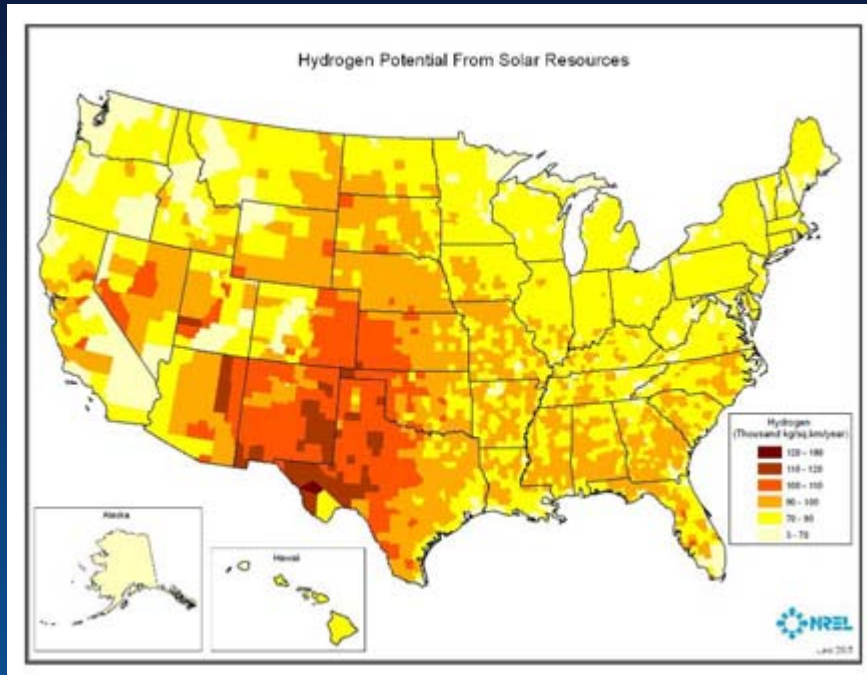
This work has been authored by Midwest Research Institute (MRI) under Contract No. DE-AC36-99GO10337 with the U.S. Department of Energy (the “DOE”). The United States Government (the “Government”) retains and the publisher, by accepting the work for publication, acknowledges that the Government retains a non-exclusive, paid-up, irrevocable, worldwide license to publish or reproduce the published form of this work, or allow others to do so, for Government purposes.

Neither MRI, the DOE, the Government, nor any other agency thereof, nor any of their employees, makes any warranty, express or implied, or assumes any liability or responsibility for the accuracy, completeness, or usefulness of any information, apparatus, product, or process disclosed, or represents that its use would not infringe any privately owned rights. Reference herein to any specific commercial product, process, or service by trade name, trademark, manufacturer, or otherwise does not constitute or imply its endorsement, recommendation, or favoring by the Government or any agency thereof. The views and opinions of the authors and/or presenters expressed herein do not necessarily state or reflect those of MRI, the DOE, the Government, or any agency thereof.

# Presentation Outline

- Background
- Characterization, Testing and Modeling
- Economic Analysis
- Large-scale R&D

# Wind and Solar Energy Potential



- The “Solar and Wind Technologies for Hydrogen Production” report was submitted to Congress as required by Section 812 of the 2005 Energy Policy Act
- The report shows that wind and solar energy sources for producing hydrogen are present in many parts of the country
- The report is available at [www.hydrogen.energy.gov/congress\\_reports.html](http://www.hydrogen.energy.gov/congress_reports.html)

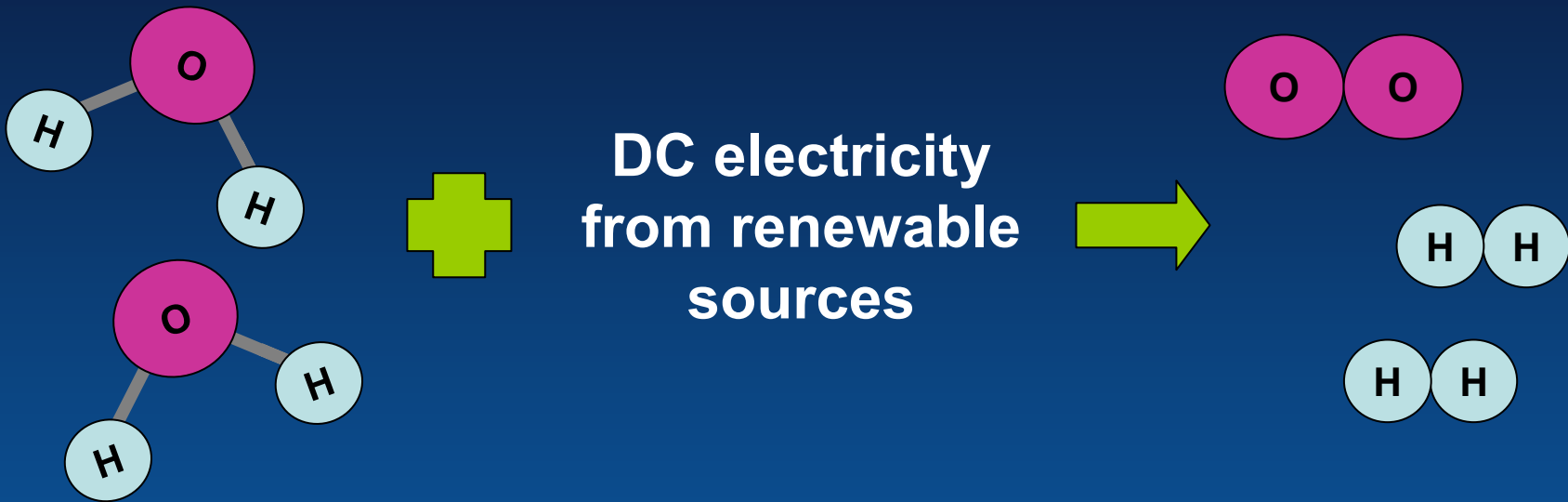
# Definition:

## A Gallon of Gasoline vs. a Kilogram of Hydrogen

- Gasoline
  - ✓ 108,000 – 123,500 BTU/gal
- Hydrogen
  - ✓ 116,000 BTU/kg
- 1 kilogram of hydrogen  $\approx$  1 gallon of gasoline
- One caveat, if fuel cells are twice as efficient as gasoline internal combustion engines then only half the amount of hydrogen would be needed
  - Twice the mileage with hydrogen



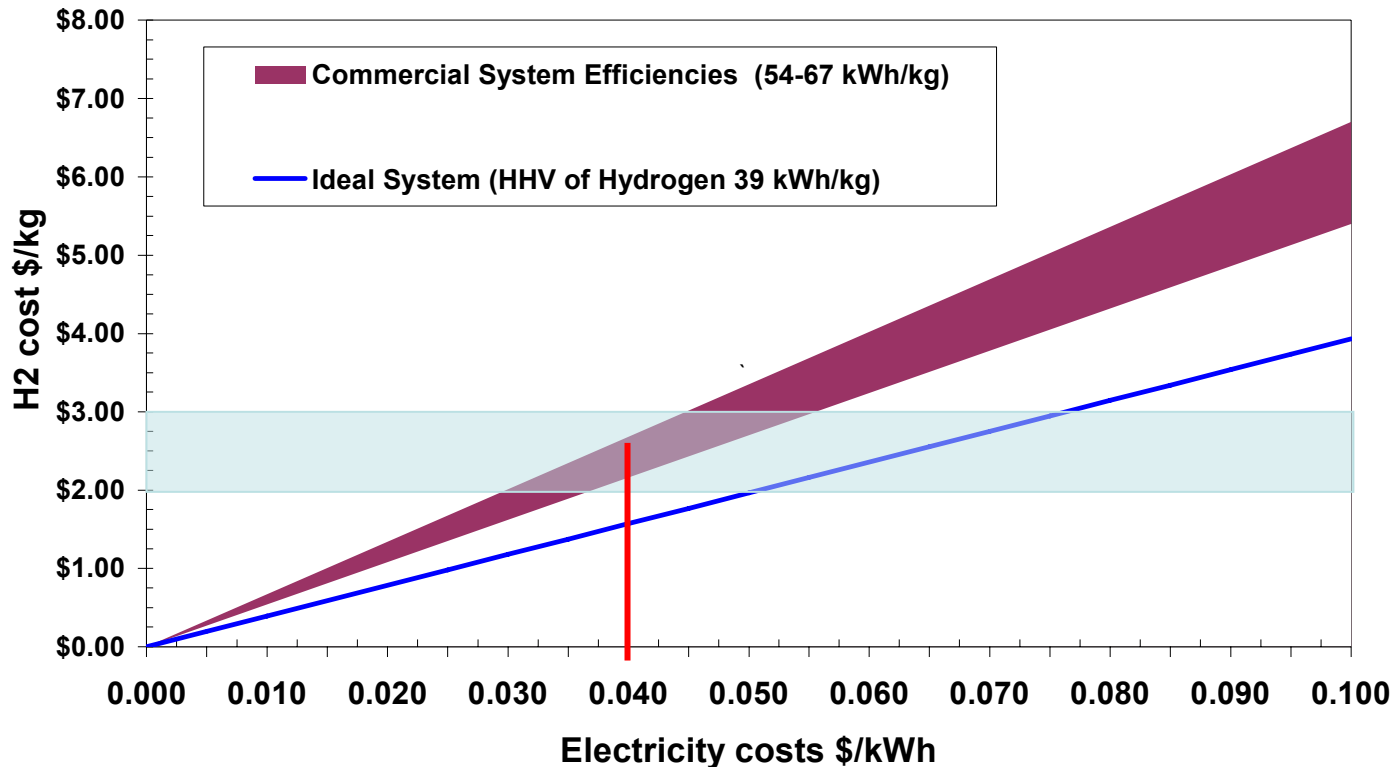
# How to produce hydrogen RE? Electrolysis.



Focus of this research is on renewable H<sub>2</sub> production because it is the only way (today) to produce the gas without emissions.

# Electricity Costs are Key

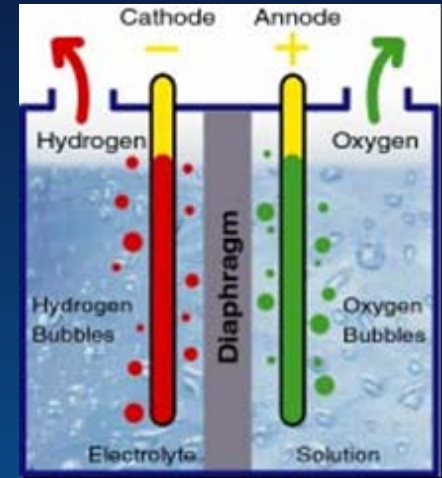
Hydrogen costs via electrolysis with electricity costs only



DOE: \$2.00 - 3.00 kg<sup>-1</sup> delivered, untaxed, 2005\$ by 2015

# Technology Characteristics

- Alkaline
  - Cheaper catalyst (Ni v. Pt)
  - Low current density (  $\uparrow$  efficiency)
  - Largest system  $< 10^3$  \$ kW<sup>-1</sup>
- PEM
  - Pure water input requires H<sub>2</sub>O vapor removal
  - Higher differential output pressure
  - Solid (not corrosive) electrolyte
  - $10^3 - 10^4$  \$ kW<sup>-1</sup>
- Solid Oxide
  - R&D





# Characterization Testing and Protocol Development



- Completed initial characterization of 6 kW PEM electrolyzer for power electronics design
- Completed testing with simulated PV and wind using power supplies
- Completed testing with 5 kW PV array
- Continued testing with 10 kW wind turbine

# Electrolyzer Requirements

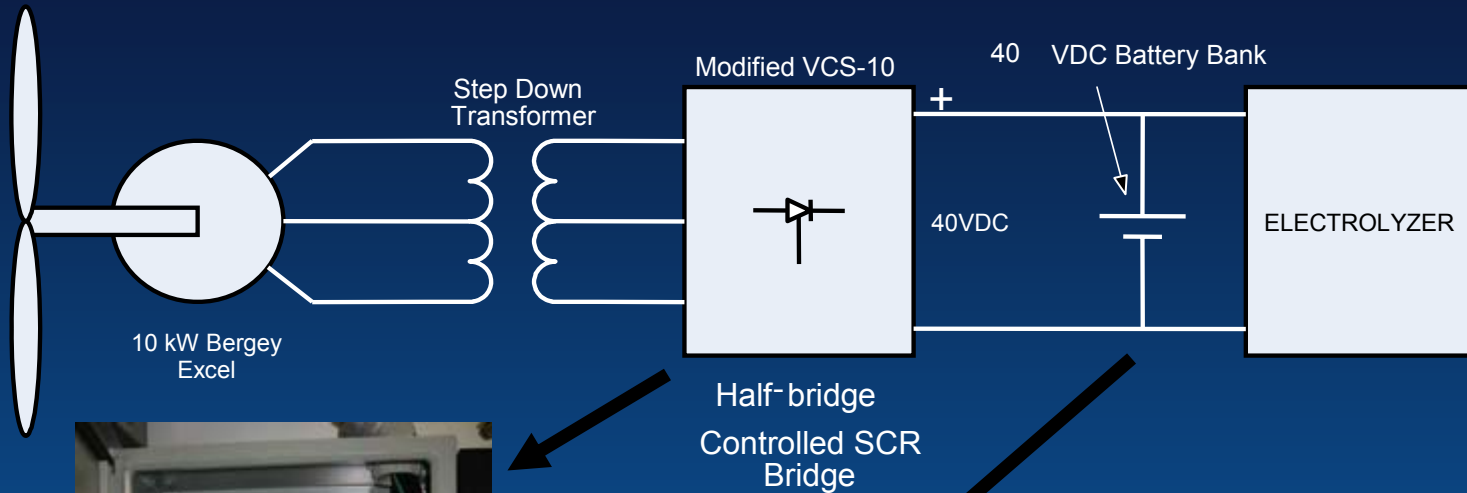
- Ideally  $\sim 1.2 \text{ V cell}^{-1} \rightarrow f(I, T, P)$
- Practical cells  $\sim 2.0 - 2.5 \text{ V cell}^{-1}$
- N series-connected cells  $\uparrow \text{V}$

$$\text{SystemEfficiency} = \frac{\text{HHV} \left( \frac{\text{kWh}}{\text{kg}} \right)}{\left( \frac{\text{StackInputEnergy(kWh)}}{\text{PowerSupplyEfficiency}} \right) + \text{AncillaryLosses(kWh)}} \times \text{HydrogenProduced(kg)}$$

$$\text{StackEfficiency} = \frac{\text{IdealStackPotential}}{\text{ActualStackPotential}}$$

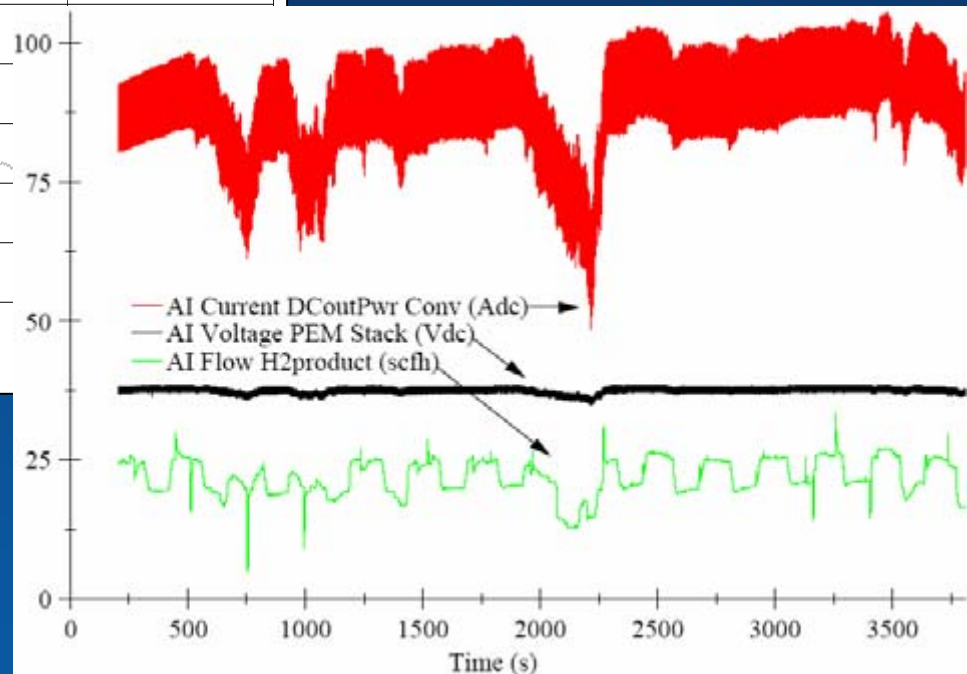
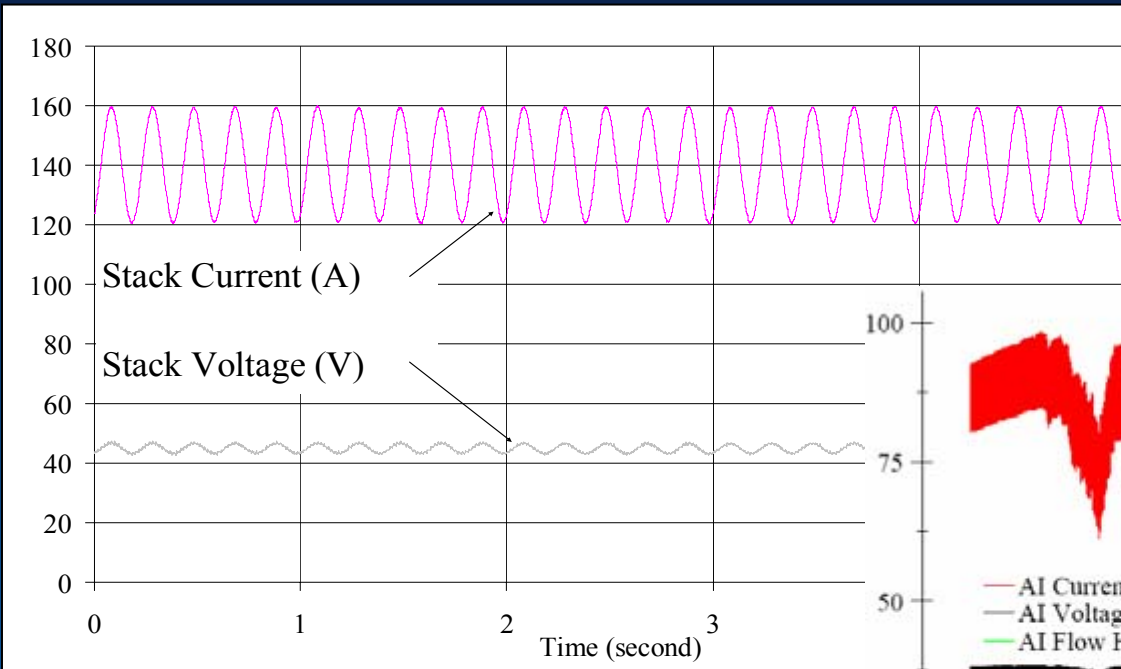
# System Integration and Component Development

## Completed Power Electronic Interface Modifications



# Variable Input Power

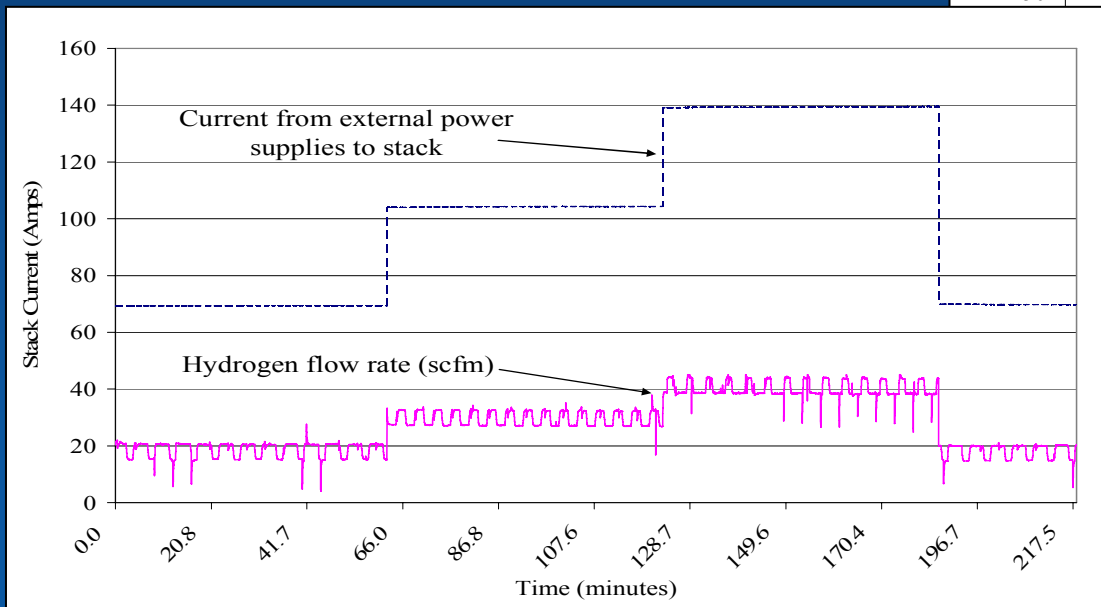
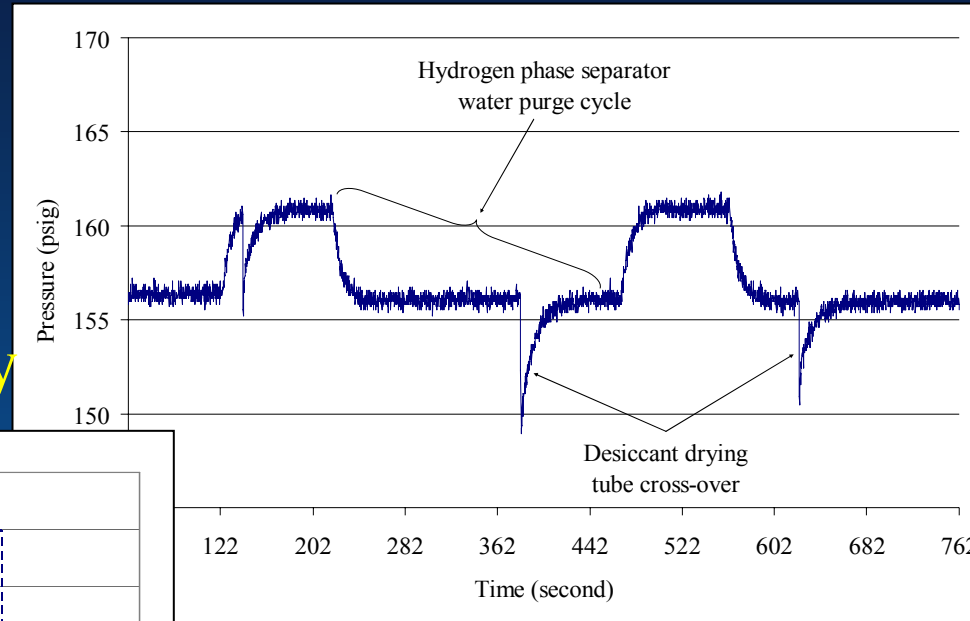
- Wind energy to stack and PV to DC/DC converter



- Programmable power supplies to vary input power to stack

# Monitor Performance

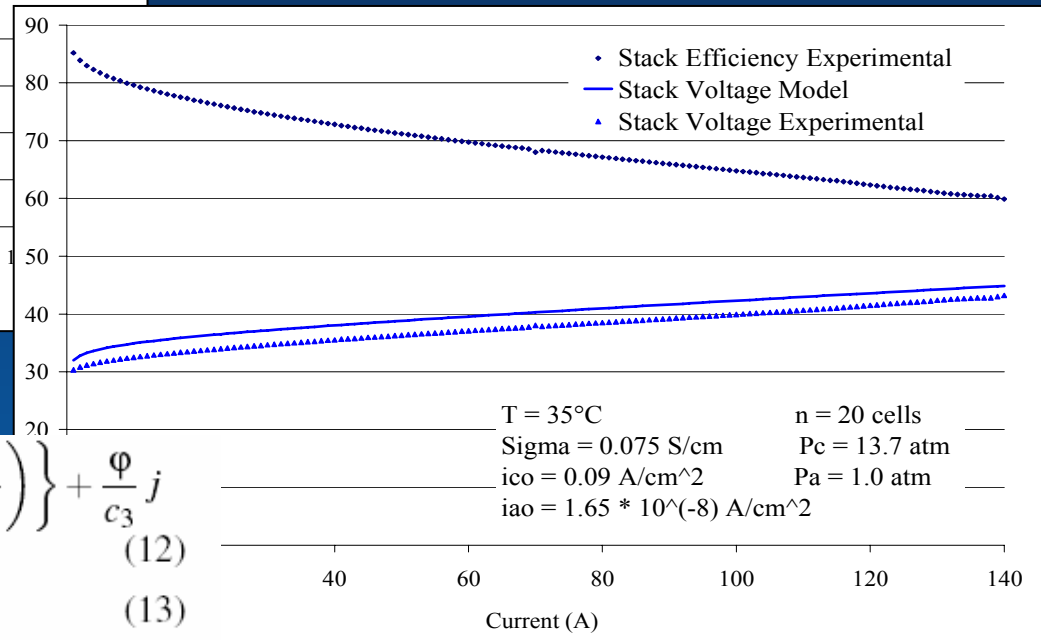
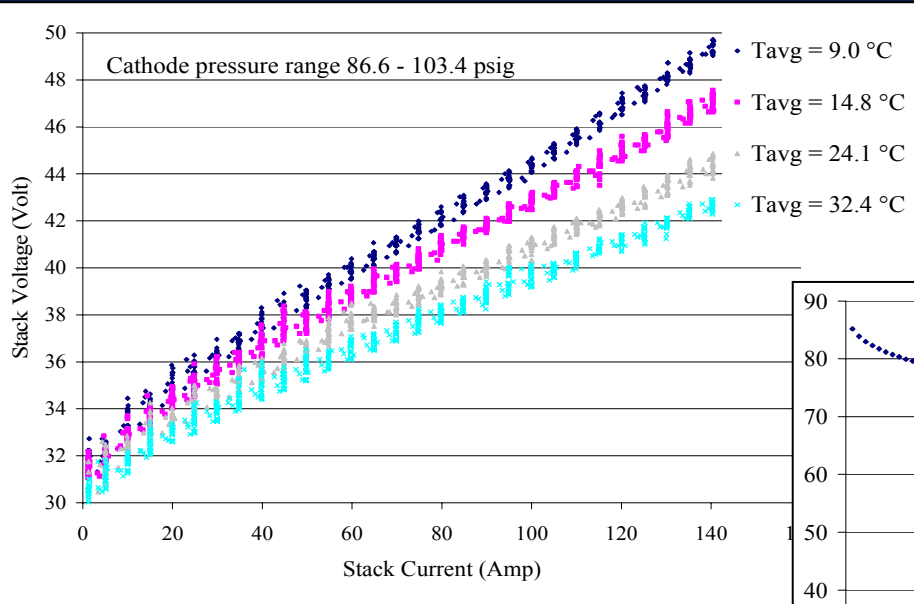
- Stack and system energy
- Hydrogen pressure, flow and quality
- Water temp., flow and quality



- Impacts on grid (pf, THD)

# Modeling

- IV data and electrochemistry to extract stack characteristics



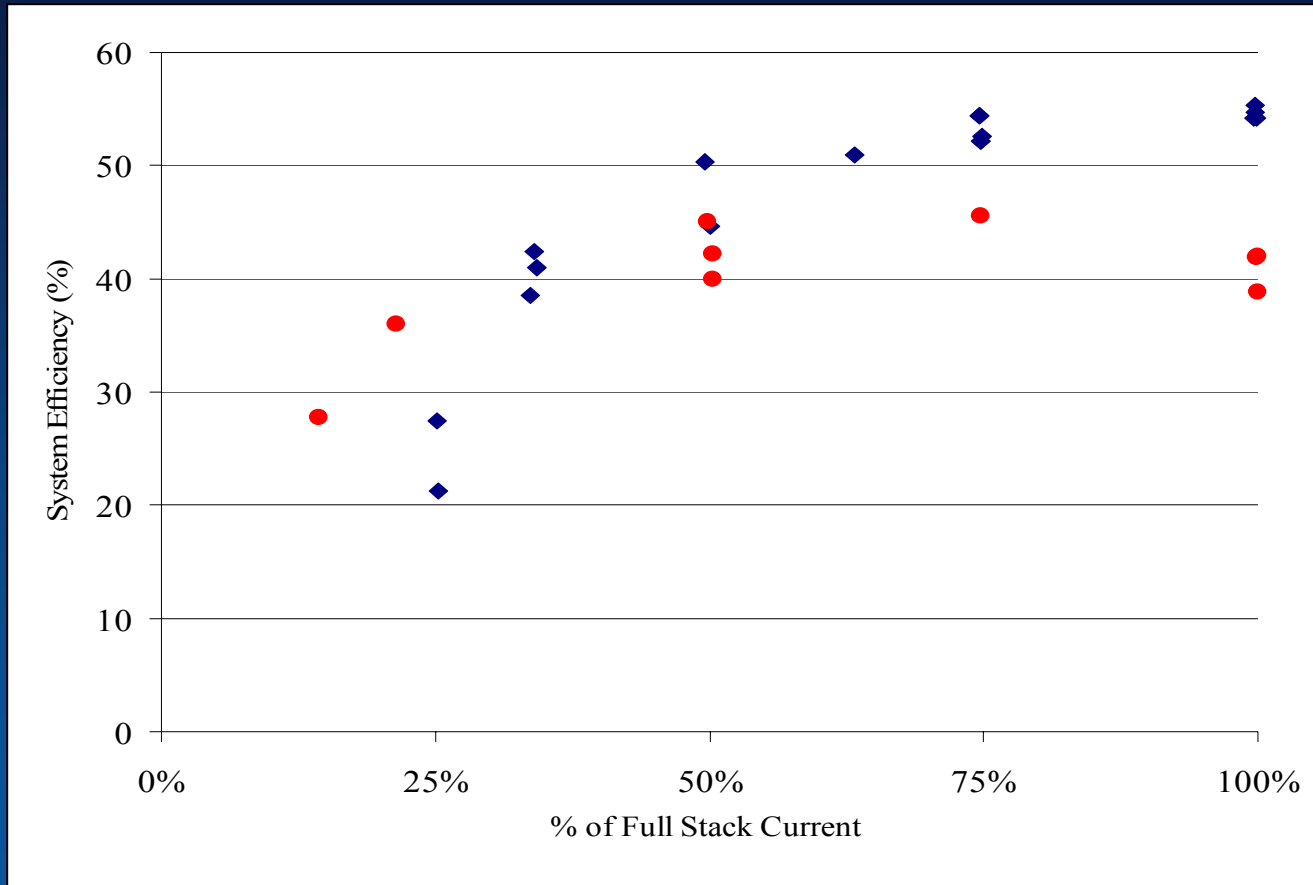
$$E = 1.20 + \frac{RT(I)}{\mathcal{F}} \left\{ \text{Sinh}^{-1} \left( \frac{j}{2c_1} \right) + \text{Sinh}^{-1} \left( \frac{j}{2c_2} \right) \right\} + \frac{\phi}{c_3} j \quad (12)$$

$$c_1 = j_{A,o} = 1.65 \times 10^{-8} \quad (13)$$

$$c_2 = j_{C,o} = 0.09 \quad (14)$$

$$c_3 = \sigma = 0.075 \quad (15)$$

# Analysis of Performance



- System efficiency of PEM system at various levels of current and temperature

# Economic Analysis Purpose

## Hydrogen Production

- How much does it cost to produce hydrogen for use as a transportation fuel?
- System uses wind electricity to produce hydrogen for transportation purposes
- Results in \$/kg of hydrogen
- Whether wind at site can compete with distributed H<sub>2</sub> production



# Case 1: Hydrogen Production at the Wind Site



Electricity



Hydrogen



Electrolyzer

- Produces hydrogen whenever the turbine produces electricity, except during peak electricity demand hours

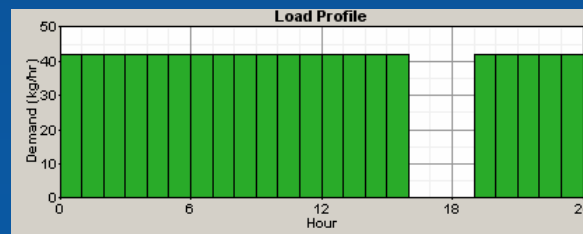
Hydrogen delivery costs are not included

Vestas V82 turbine

- 1.65 MW

Evaluated two wind sites

- Minnesota WROC Site
- Gobblers' Knob



# Case 2: Distributed Hydrogen Production Using Xcel Aggregate Wind Power

Lamar



Signal

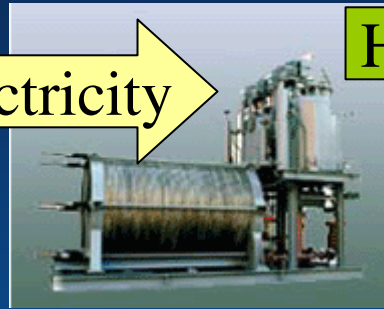


Electricity



Grid

Electricity



Electrolyzer

Hydrogen

Hydrogen Storage Tanks



Hydrogen

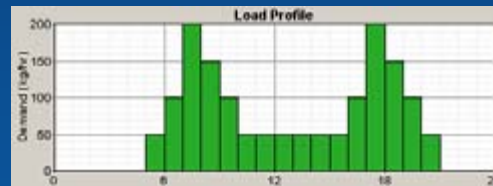
Peetz



Ponnequin

Xcel Aggregate Wind

*Wind Sites*



Must meet a filling station demand

Hydrogen for transportation fuel use

*Hydrogen Fueling Station*

# Model Results

- Good wind resource is a key to producing low price hydrogen
  - 12-16% price reduction in hydrogen production
- Production at the wind site makes fiscal sense if cost reductions offset delivery cost
- Cost reductions and efficiency improvements must be obtained by electrolyzer manufacturers to obtain low price hydrogen
- If aggregate wind electricity is available at the filling station for \$0.038/kWh, the potential exists for hydrogen production, compression and storage from wind below the DOE cost target of \$2-3/kg delivered

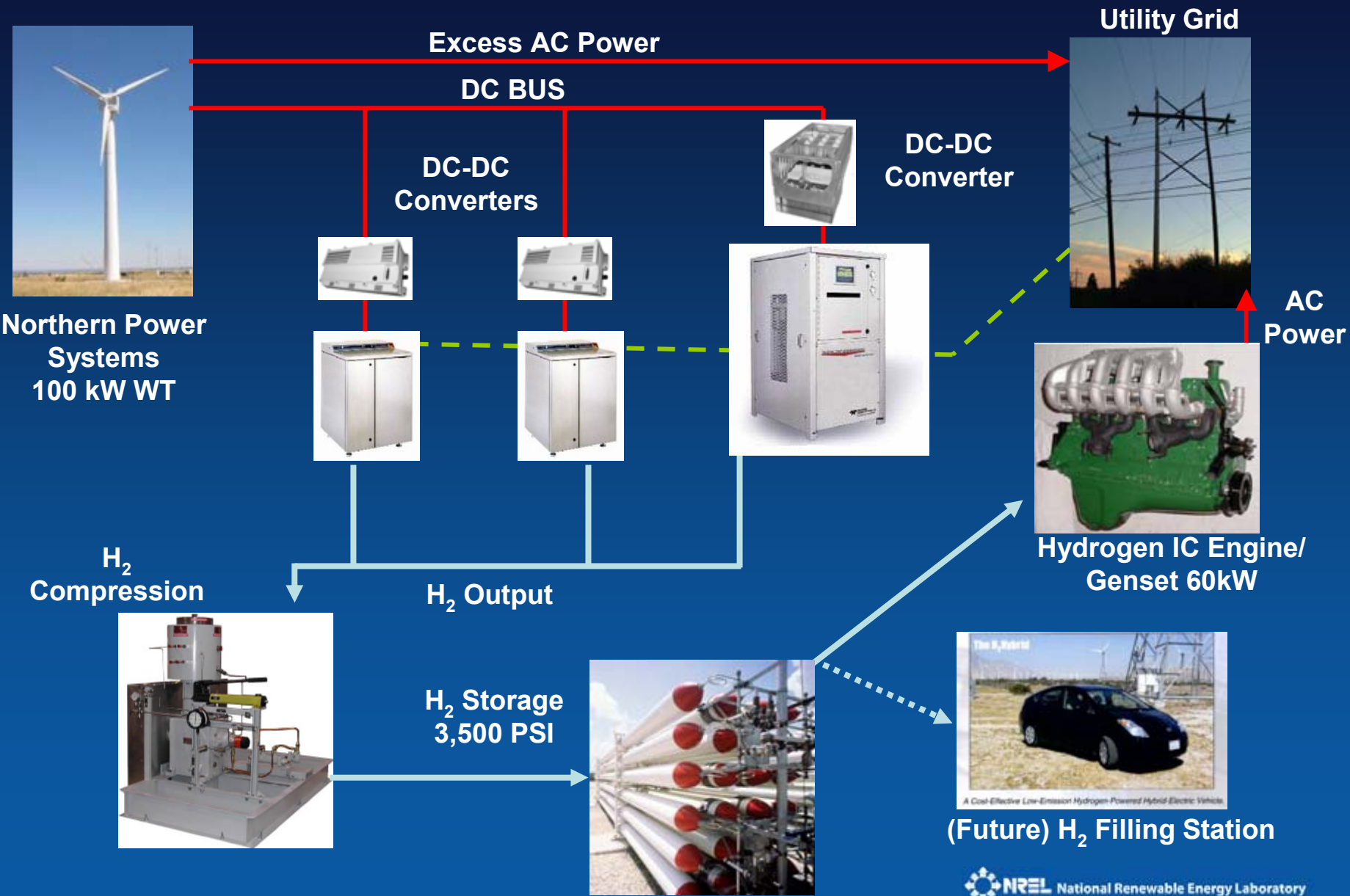
**∴ Xcel Decides Go!**

# Project Objectives

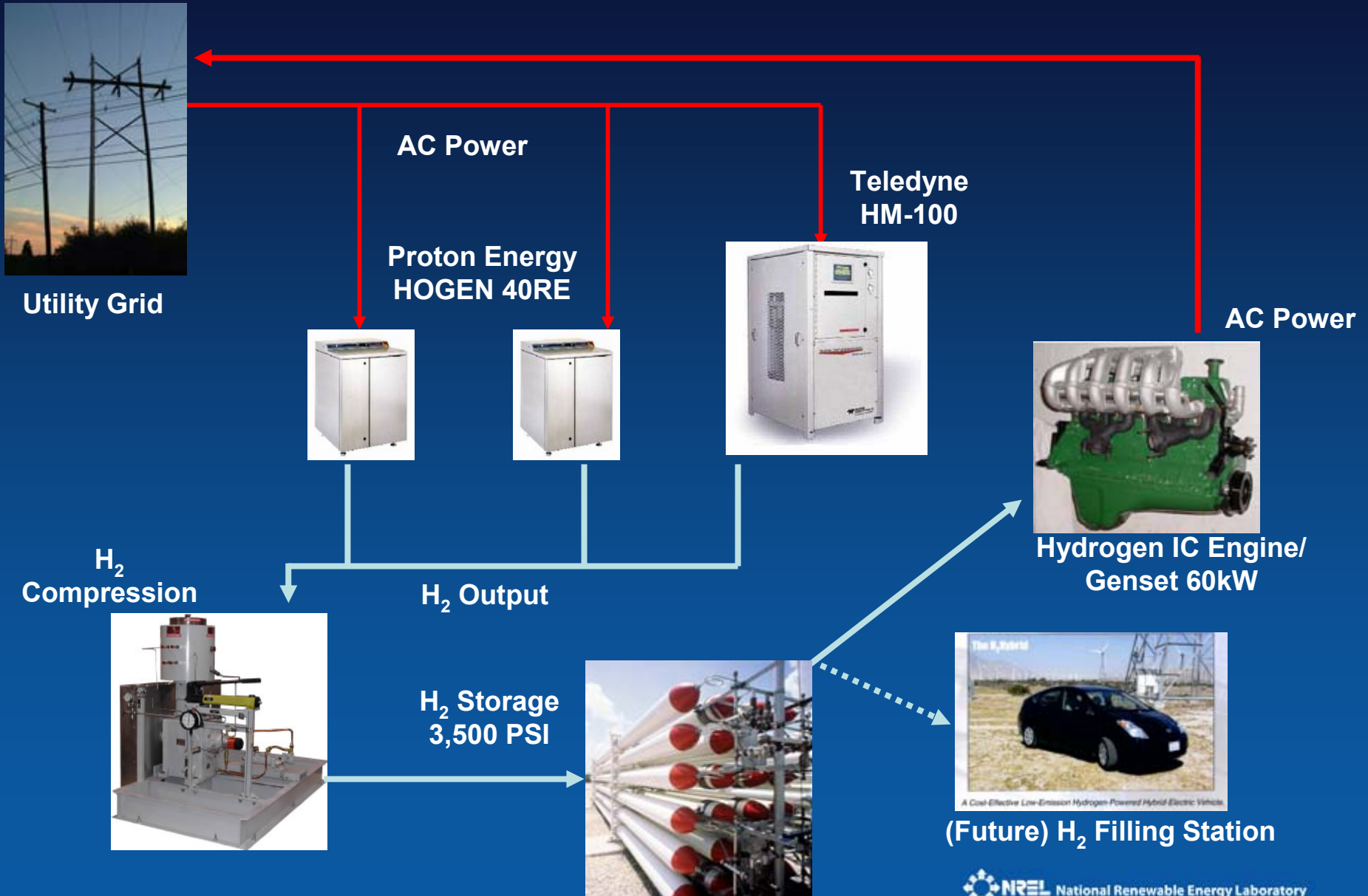
This project examines the issues with using renewable energy to produce hydrogen by electrolyzing water

- Characterize electrolyzer performance under variable input power conditions
- Design and develop shared power electronics packages and controllers to reduce cost and optimize system performance and identify opportunities for system cost reduction through breakthroughs in component integration
- Test, evaluate and optimize the renewable electrolysis system performance for both
  - Dedicated hydrogen production
  - Electricity/hydrogen cogeneration

# Wind2H2E Wind Testing Configurations



# Wind2H2E Grid Testing Configurations



# Acknowledgements and References

- Thanks to:
  - Johanna Levene, Ben Kroposki, Bill Kramer and Chris Pink
  - Peter Lilienthal and Tom Lambert for HOMER development and enhancements
  - H2A team for hydrogen equipment assumptions
  - Team of Xcel, NREL, EPRI and John Cornish
  - Specifically Frank Novachek and Vicki McCarl of Xcel Energy for their invaluable assistance and support during this project.
- References:
  - [www.nrel.gov/homer](http://www.nrel.gov/homer)
  - WindPower paper and presentation, *An Economic Analysis of Hydrogen Production from Wind*
  - [www.hydrogen.energy.gov/h2a\\_analysis.html](http://www.hydrogen.energy.gov/h2a_analysis.html)

# Backup Slides



# Key Common Assumptions

Parameter	Assumption
<b>Electrolyzer</b>	<ul style="list-style-type: none"><li>• Costs are assumed to be \$740/kW, \$400/kW, and \$300/kW in near, mid and long term</li><li>• Electrolyzer and compression efficiencies are 70, 78 and 83% (based on 39 kWh/kg HHV) in short, mid and long term</li><li>• Uses AC power</li></ul>
<b>Compressor</b>	<ul style="list-style-type: none"><li>• \$600,000, \$300,000 and \$100,000 for a 1500 kg compressor in near, mid and long term</li><li>• Includes compressor energy requirements of 2.09 kWh/kg</li></ul>
<b>Annual Real Interest Rate</b>	<ul style="list-style-type: none"><li>• Discount rate used to convert between one-time costs and annualized costs</li><li>• Study uses 10%</li></ul>
<b>Hydrogen Dispensing</b>	<ul style="list-style-type: none"><li>• No hydrogen dispensing costs included</li></ul>

Detailed assumptions are available in Appendix A of Power-Gen paper

# Key Common Assumptions (cont...)

Parameter	Assumption
<b>Peak Electricity</b>	<ul style="list-style-type: none"><li>• Peak electricity usage is from 4-7 p.m. on weekdays, so no hydrogen can be produced during those three hours</li><li>• There are no peak hours during the weekend, so electrolyzer can run 24 hours a day</li></ul>
<b>System Pressure</b>	<ul style="list-style-type: none"><li>• Hydrogen is compressed after production to 6500 psi</li><li>• Storage is provided at 6500 psi</li></ul>
<b>Wind Turbine Capital and Operating Costs</b>	<ul style="list-style-type: none"><li>• Turbine costs are not specifically used in analyses, rather the cost of wind generated electricity is used</li><li>• Assumes this cost includes capital, replacement and operating costs of the wind turbines</li><li>• Xcel Energy purchases wind generated electricity at a rate of \$0.038/kWh</li></ul>

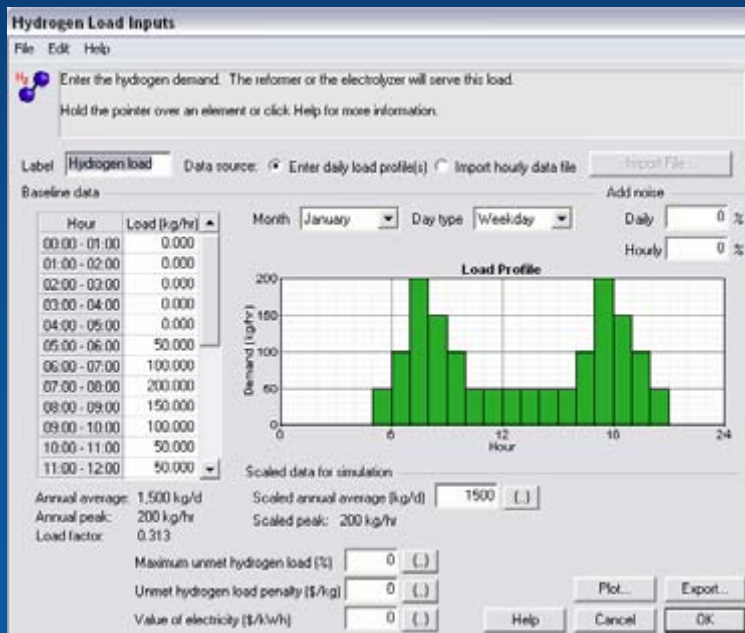
Detailed assumptions are available in Appendix A of Power-Gen paper

# Wind2H2E Project Features

Feature	Importance
Direct DC feed to electrolyzer	Grid connected <u>and</u> isolated wind farm simulations, system efficiency gains & future control system integration capital cost reductions
Concurrent AC feed to electrolyzer	Permits clear comparison to direct DC feed performance
Multiple commercial electrolyzers	Grid connected <u>and</u> isolated wind farm simulations and reduced operability risk, and system efficiency gains
Medium pressure range compression and storage	Reduced operability risk, reduced cost to compress hydrogen & improved reliability
Hydrogen ICE generator set	H <sub>2</sub> or H <sub>2</sub> /NG mixed fuel option
Initial siting at NREL controlled facility	World class R&D practices and opportunity to learn H <sub>2</sub> handling practices from experienced practitioners
System transportability for redeployment	Utility value after R&D testing

# Analysis Tool

- The HOMER<sup>®</sup> Model was developed at NREL to allow users to optimize electric systems and make it easier to evaluate the many possible system configurations
  - Hydrogen added in 2004, enhanced in 2005



The Problem:

Case 2: You are trying to meet a hydrogen load (shown to the left)

- How much electricity can aggregate grid provide?

- Should you add more electrolyzers, or more storage to meet demand?

- How much does the hydrogen cost?