

# National Park Service Biological Resource Management Division



## Exotic Plant Management Teams

**Alaska**

**Mid-Atlantic  
Cooperative**

**California**

**National Capital  
Region**

**Chihuahuan Desert/Southern  
Shortgrass Prairie**

**North Coast  
Cascades Network**

**Colorado Plateau**

**Northeast**

**Florida/Caribbean Partnership**

**Northern Great Plains**

**Great Lakes**

**Northern Rockies**

**Gulf  
Coast**

**Pacific  
Islands**

**Lake Mead**

**Southeast**



Worthington Glacier, AK - Photo by Judy Daniels



Haleakala NP, Maui - Photo by Judy Daniels

EXPERIENCE  
YOUR  
AMERICA

# National Park Service Biological Resource Management Division



## Mid-Atlantic Cooperative Exotic Plant Management Team

EXPERIENCE  
YOUR  
AMERICA



**Comprised of  
NPS staff,  
volunteers,  
SCA, and  
private  
enterprise  
(not shown)**



# Mid-Atlantic Cooperative Exotic Plant Management Team Host and Partner Parks

National Park Service  
U.S. Department of the Interior



Parks	Acres
Appomattox Court House National Historical Park	1,726
Booker T. Washington National Monument	234
Colonial National Historical Park	9,317
Eisenhower National Historic Site	691
Fredericksburg and Spotsylvania National Military Park	10,267
George Washington Birthplace National Monument	466
Gettysburg National Military Park	5,899
Petersburg National Battlefield	3,305
Richmond National Battlefield Park	1,499
Shenandoah National Park	191,194
Thomas Stone National Historic Site	315
<b>Total Acreage</b>	<b>224,913</b>

Calculations based on Lambert Conformal Conic (Conterminous US) projection



# National Park Service Biological Resource Management Division



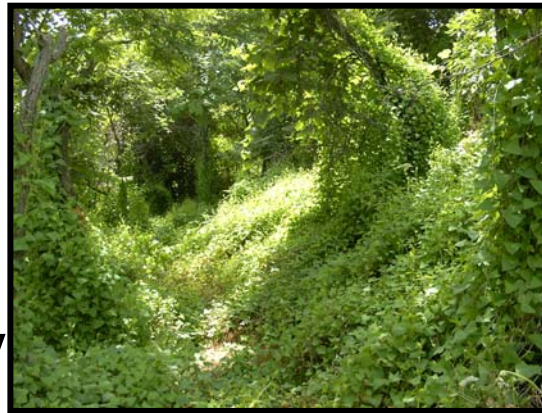
EXPERIENCE  
YOUR  
AMERICA

Plants  
types  
included  
annuals,  
perennials,  
grasses,  
shrubs, and  
trees

## Mid-Atlantic

### Top Ten Species

- Phragmites
- Mile-a-minute
- Multiflora rose
- Japanese barberry
- Autumn olive
- Privet
- Ailanthus
- Mullein
- Japanese stiltgrass
- Norway maple



Mile-a-minute



Phragmites



Ailanthus



Multiflora rose



# National Park Service Biological Resource Management Division



## Mid-Atlantic Control



Mapping a control unit with GPS



Cutting Phragmites using a weed-whip



Cutting bamboo using chainsaw

EXPERIENCE  
YOUR  
AMERICA

Control work included up-rooting, cutting, weed-whacking, as well as foliar, basal, and cut-stump herbicide applications

# National Park Service Biological Resource Management Division



EXPERIENCE  
YOUR  
AMERICA

## Mid-Atlantic Control



Foliar  
spraying  
Japanese  
stiltgrass



Stump herbicide application  
on a 4-foot Ailanthus



Basal  
spraying  
privet bush

**Safety is  
emphasized  
with all  
operations**

**Emphasized  
via: state  
pesticide  
certification,  
equipment  
safety  
briefings,  
and daily  
tailgate safety  
discussions**