



Utah Geological Survey NCRDS Coal Research

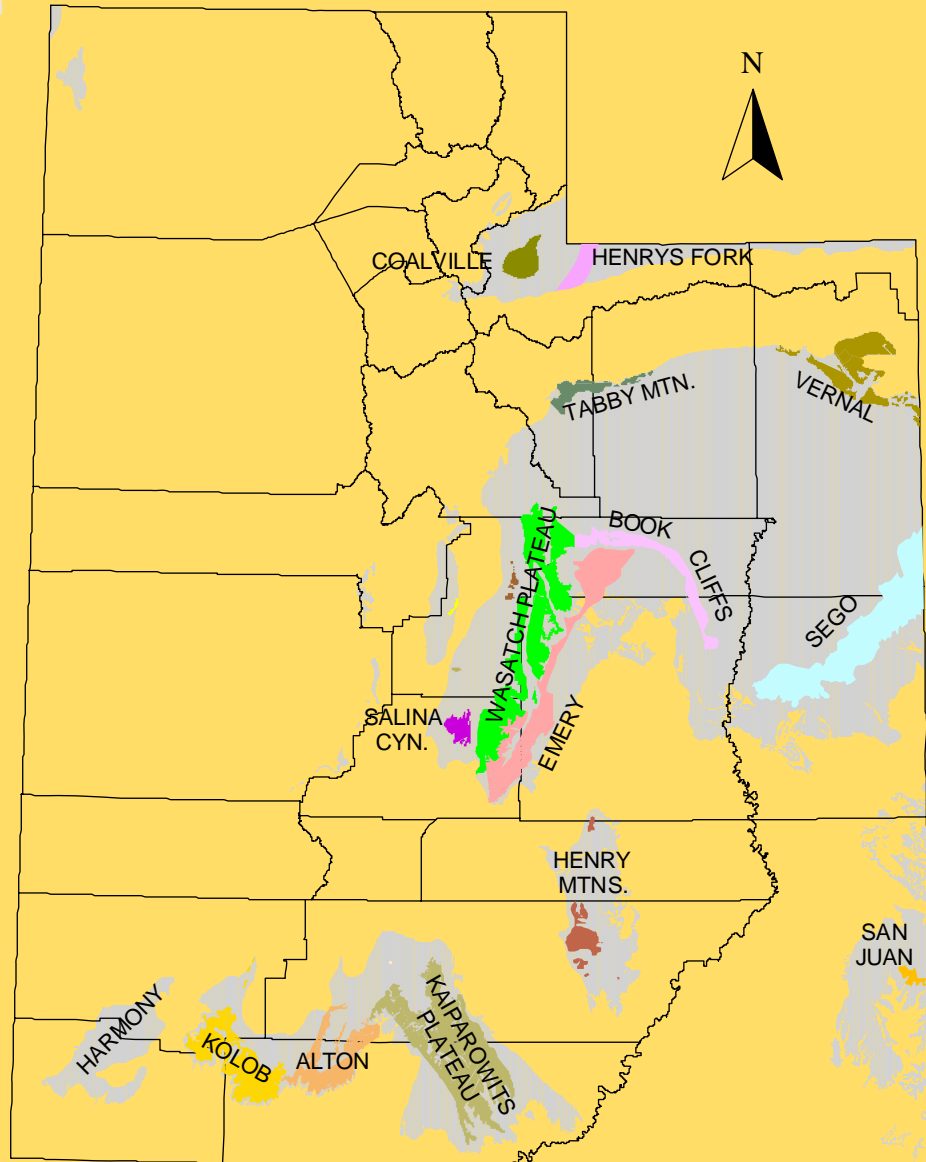
(Special thanks to the USGS for continued funding over many years to enable this work!)

Presented by David Tabet

Energy and Minerals Program Manager

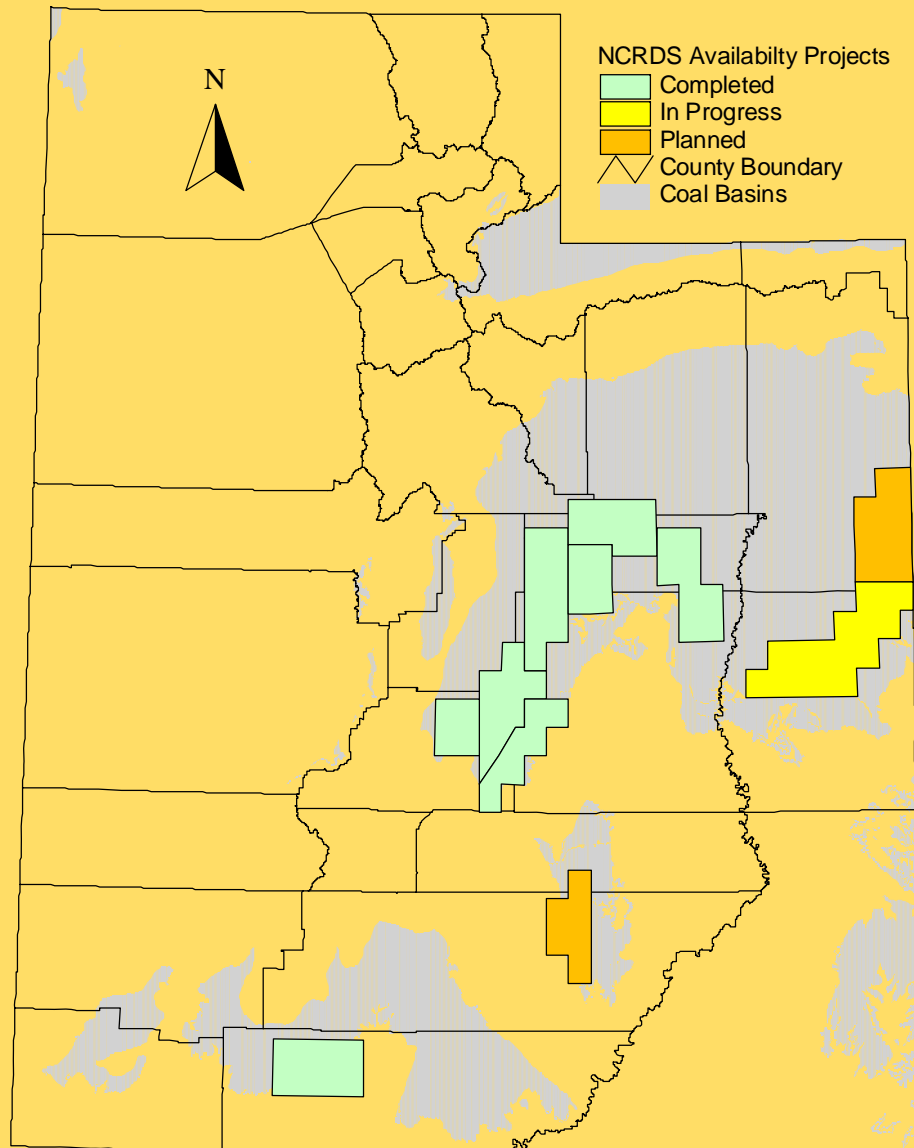
Lexington, Kentucky

November 15, 2007



UTAH COALFIELDS

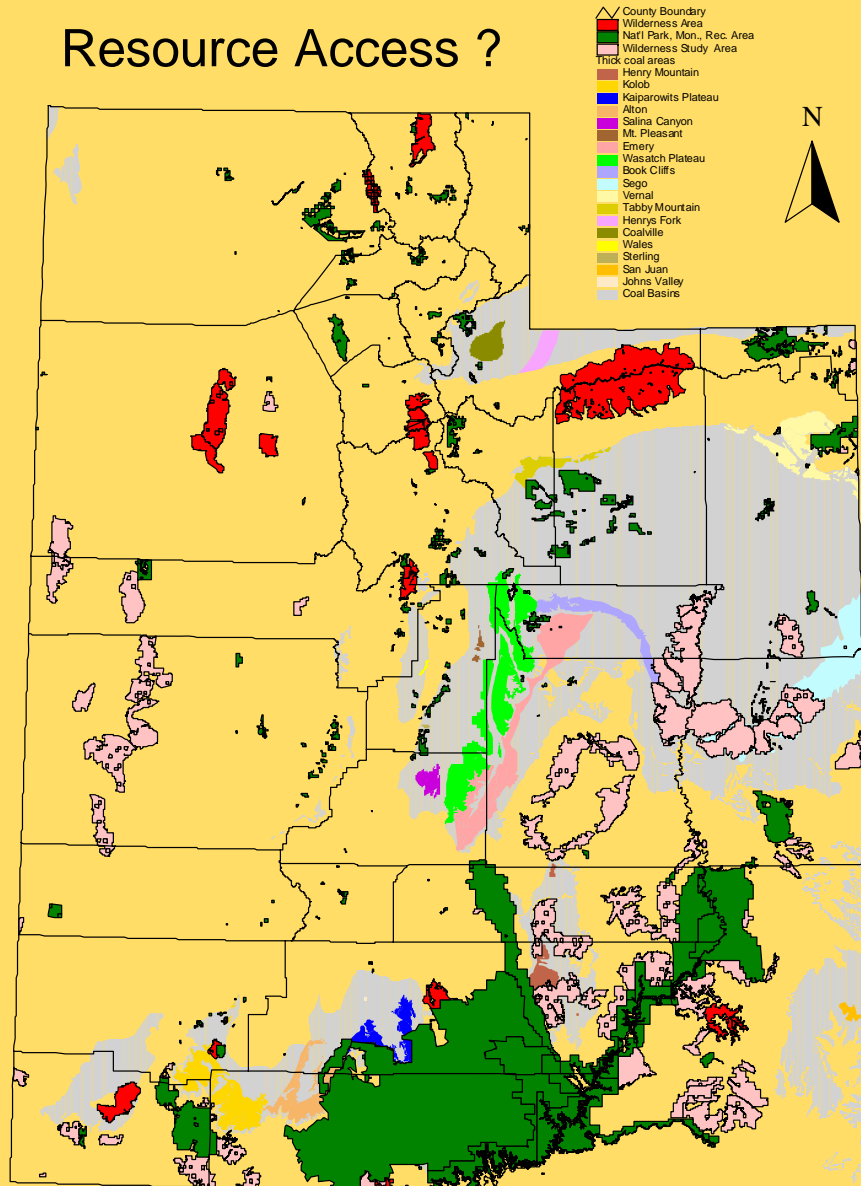
- * 22 coalfields in state
- * 3 producing fields
- * Mainly U. Cretaceous coal on Colorado Plateau



NCRDS AVAILABILITY PROJECTS

- Began work in 1997.
- Continuing with coal availability studies through 2009.
- Goal to reassess coal resources for entire state.
- Starting to map coal quality for resources.
- Kaiparowits Plateau, Kolob, and Vernal fields potential, but not planned as yet.

Resource Access ?



- Serious conflicts exist with coal resource use.
- Large areas and administratively closed to coal development.
- Conflicts with O&G.
- Conflicts with wildlife.
- Southern Utah remote from transportation.