

IFPS Training Aid

Obtaining information about a grid

Introduction:

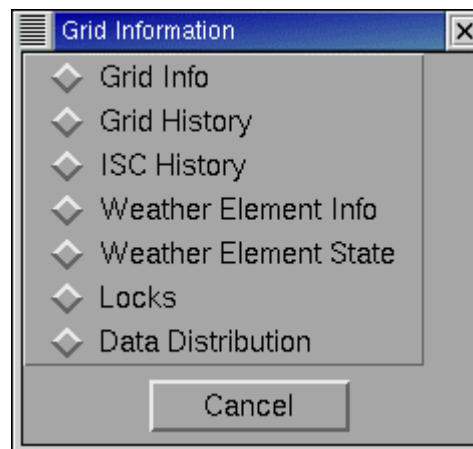
You can easily obtain much detailed information about any grid displayed in the Grid Manager.

Objective:

1. Demonstrate the steps to obtain a wide variety of detailed information about any grid displayed in the Grid Manager.
2. List the different categories of information that can be obtained in the Grid Information window.
3. Describe some of the detailed grid information obtained from each menu selection.

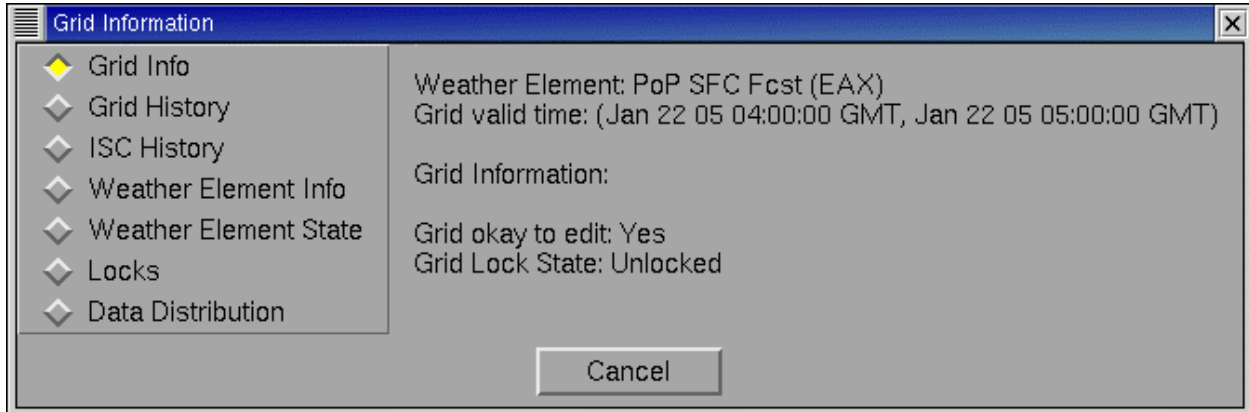
Procedure:

1. Select a grid in the Grid Manager such as a PoP grid.
2. Hold down the right mouse button (MB3) over the grid and select **Display Info** from the pop-up window. The Grid Information dialog, shown below, is displayed.



You can display seven different categories of grid information. Each category is described in more detail over the next few pages.

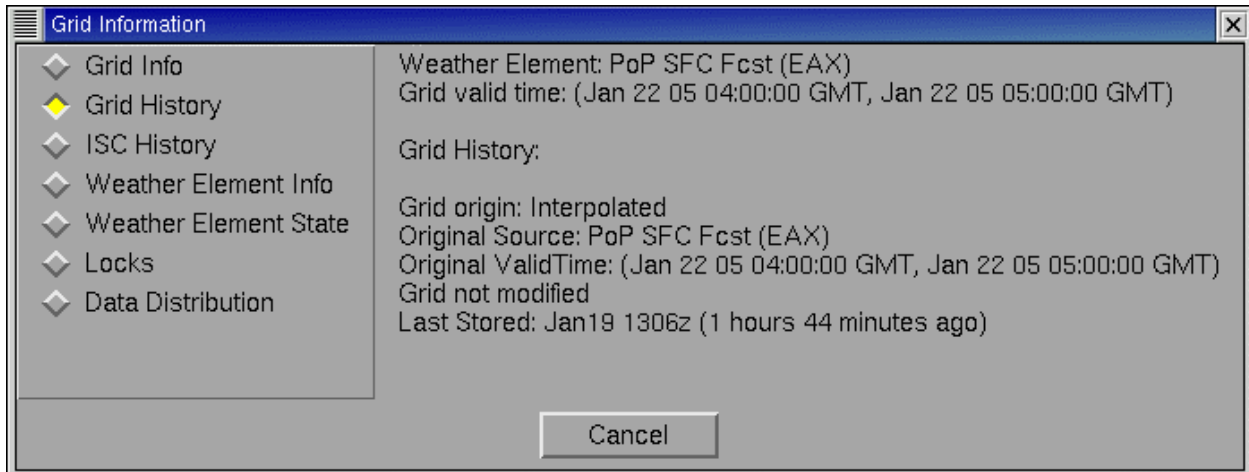
- a. Select the **Grid Info** option to display the following information.



The Grid Information dialog displays the weather element (PoP) and the grid valid time (in this case the grid selected is between 0300 and 0400 UTC) at the top of the window.

In addition, there is the Grid Information section indicating if the grid is OK to edit or if the grid is locked.

- b. Select the **Grid History** option to display the following information.

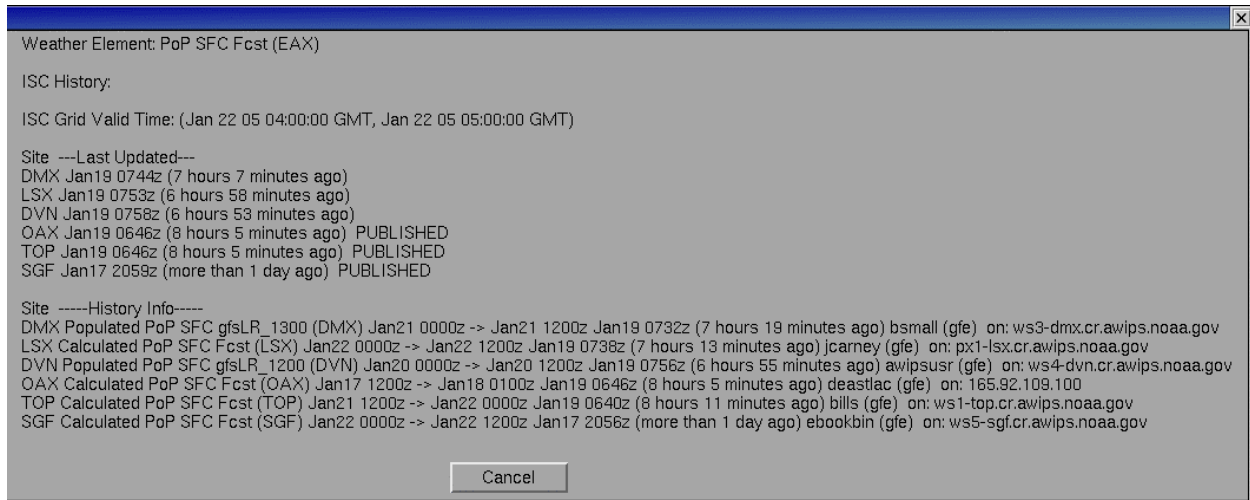


The Grid History dialog displays the same weather element and valid time at the top.

The Grid History section displays information about grid origin, original source of the grid, its' valid time, if the grid has been modified, and when it was last stored.

For example, a grid can be interpolated, calculated, populated and created from scratch.

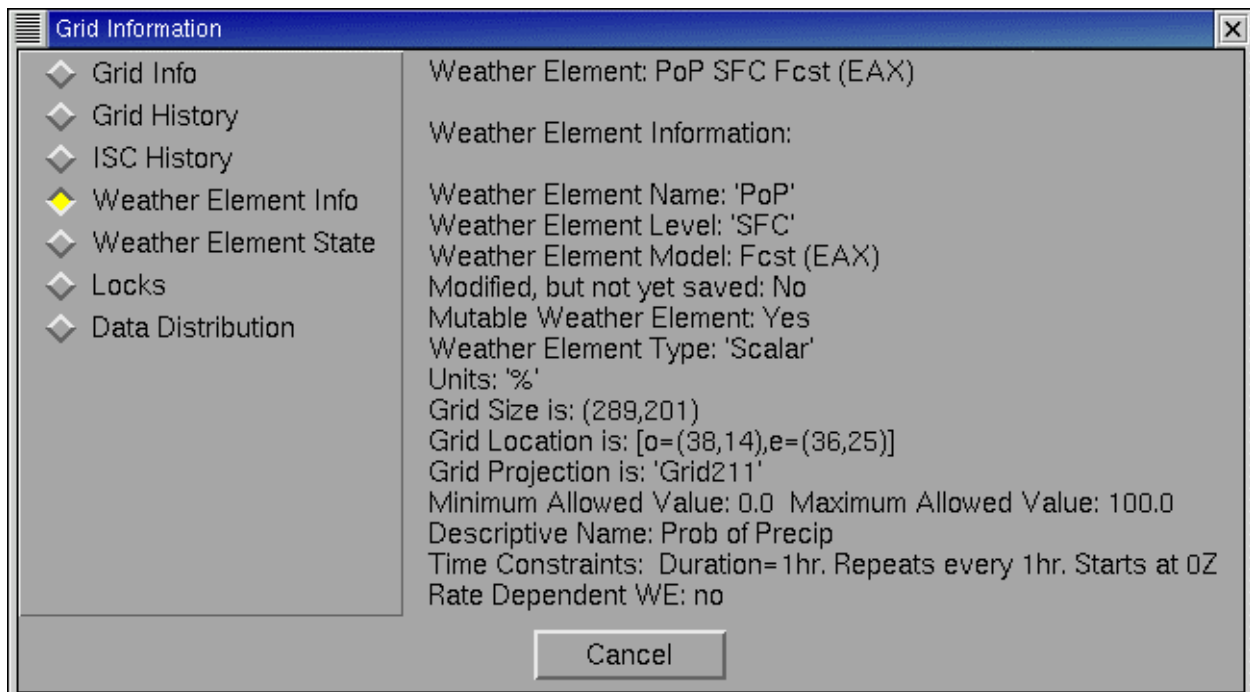
c. Select the **ISC History** option to obtain the following display.



The ISC History dialog displays information about when surrounding offices last updated the corresponding grid for this same time period and if the grid was published.

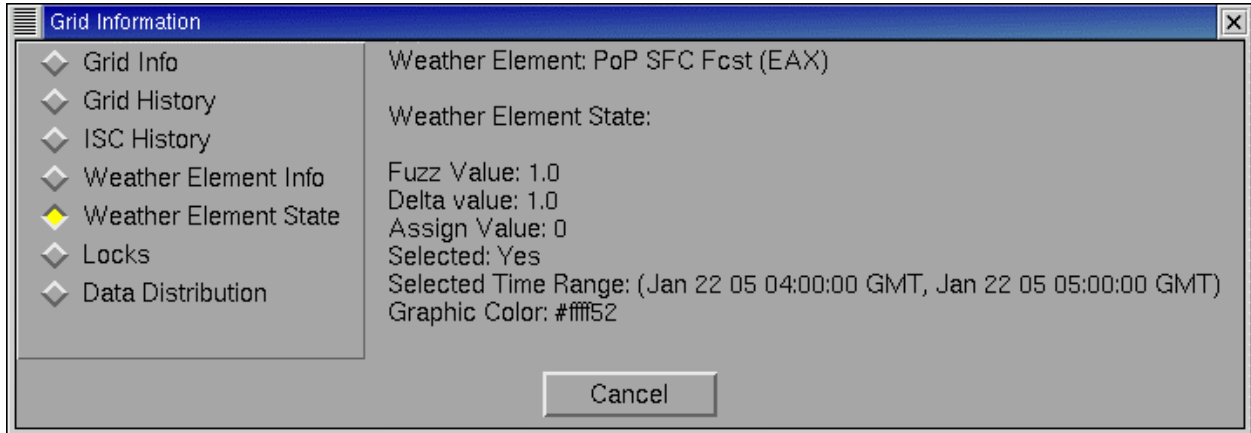
In addition, there is history information on how the corresponding grid from each WFO was created, the name of the person who created the grid, and workstation they were on.

d. Select the **Weather Element Info** option to obtain the following display.



The Weather Element dialog displays detailed configuration information on the grid size, its location relative to the AWIPS coordinate system, the Min and Max allowed values, the descriptive name used when creating PNG images, and the time constraints.

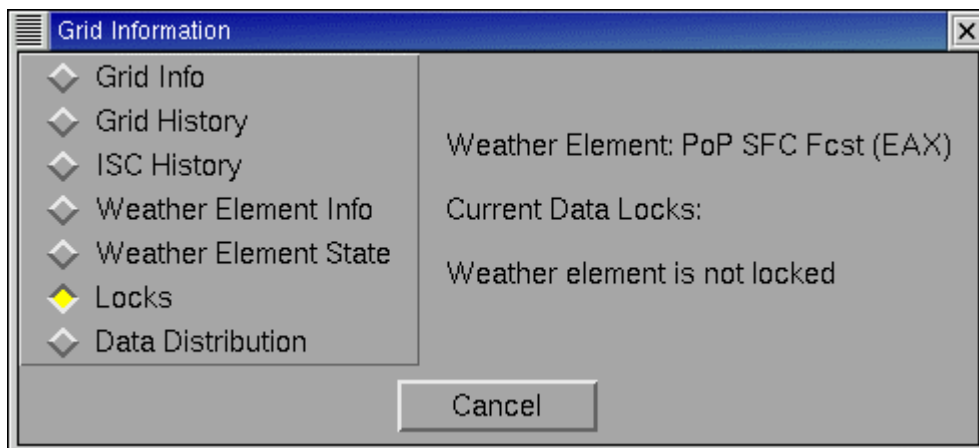
- e. Select the **Weather Element State** option to obtain the following display.



The Weather Element State dialog displays information on the *Fuzz* and *Delta* values (if you have assigned a value) and, in the case of the wind element, the vector edit mode.

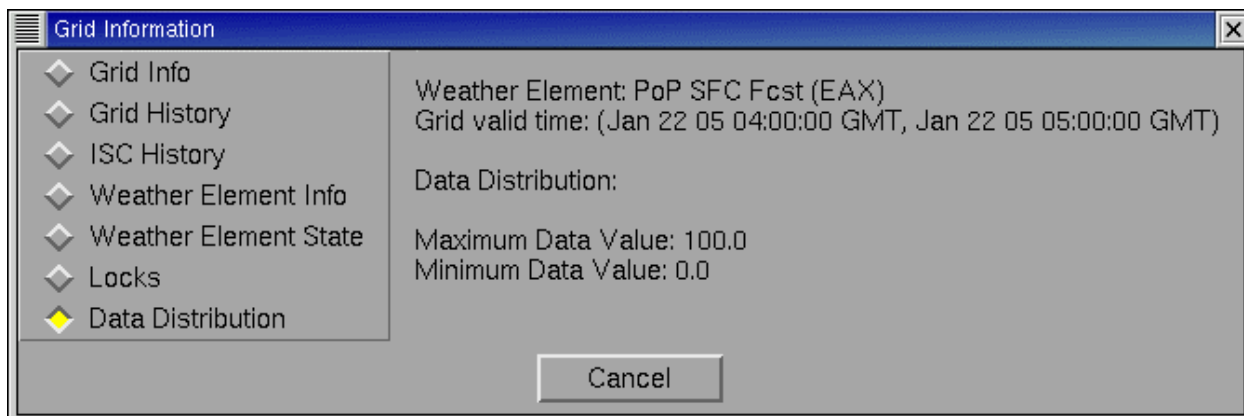
If you define an edit area and assign a value the value is displayed instead of a zero.

- f. Select the **Locks** option to obtain the following display



The Locks dialog displays whether the element is locked.

g. Select the Data Distribution option to obtain the following display.



The Data Distribution dialog displays the Maximum and Minimum values contained in the grid you selected.

This option may be useful when selecting a temperature or dew point to quickly see the range of values across your domain.

3. Select **Cancel** to close the window and return to the Grid Manager and Spatial Editor.

END