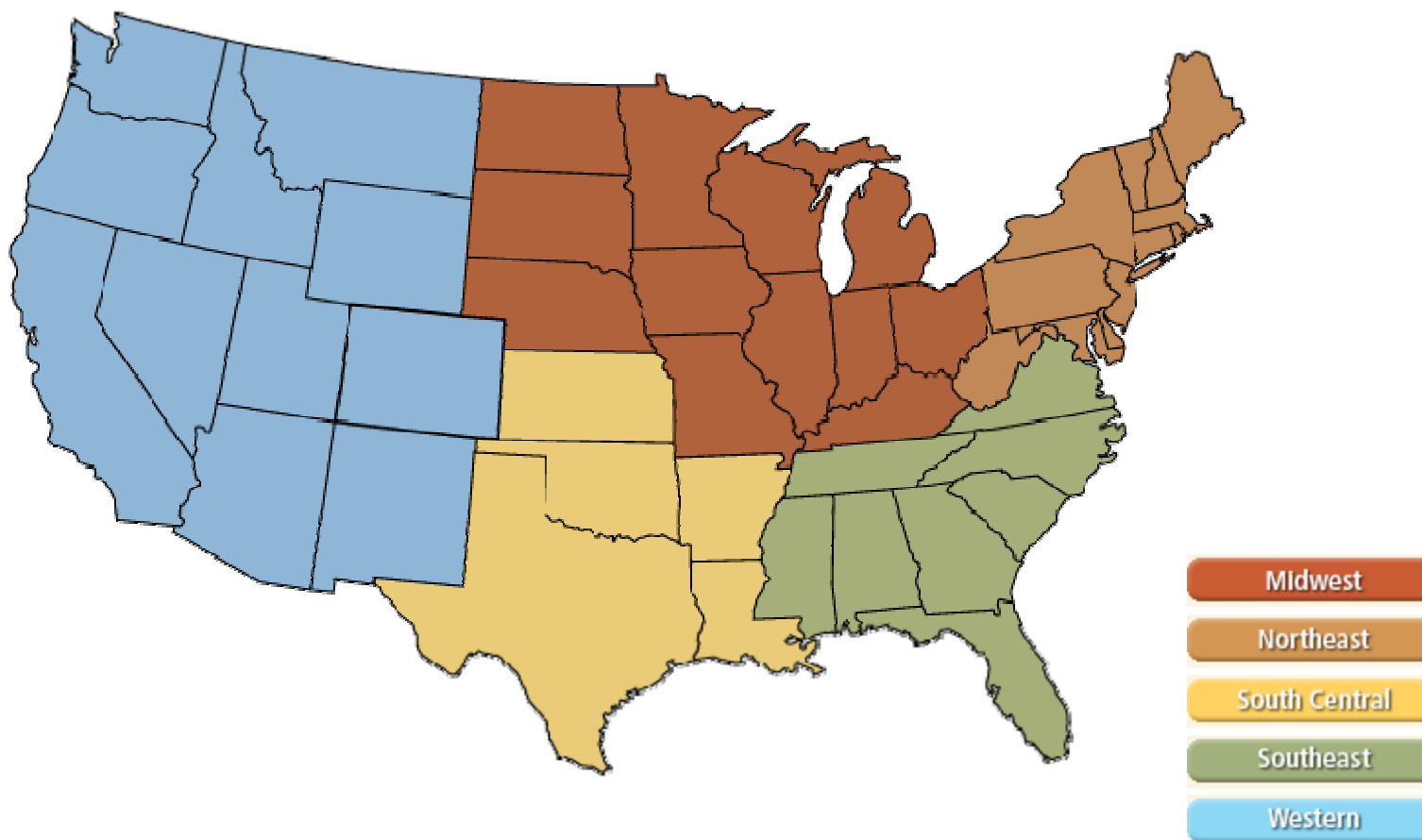
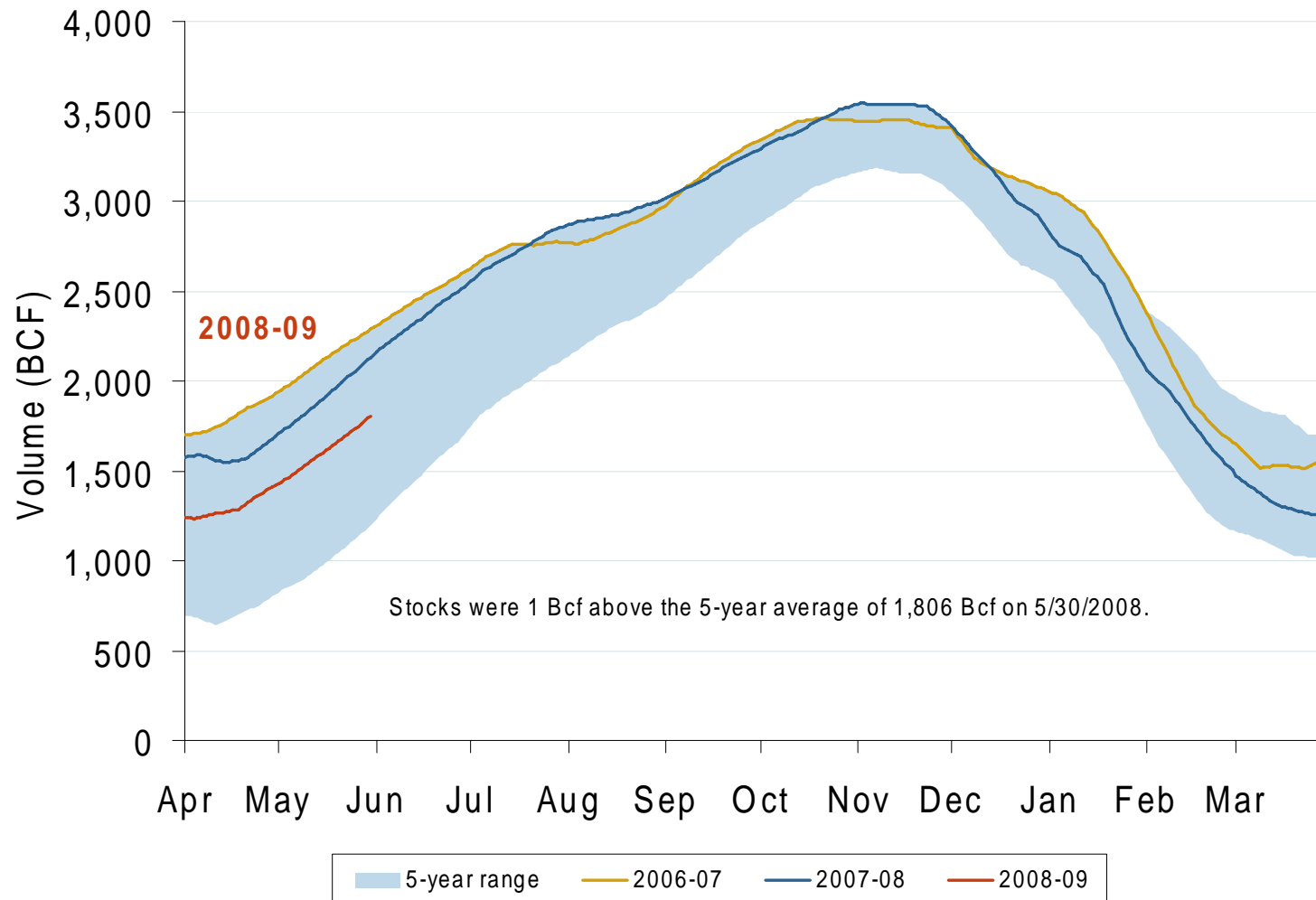


# Natural Gas Market National Overview



## Total U.S. Working Gas in Storage

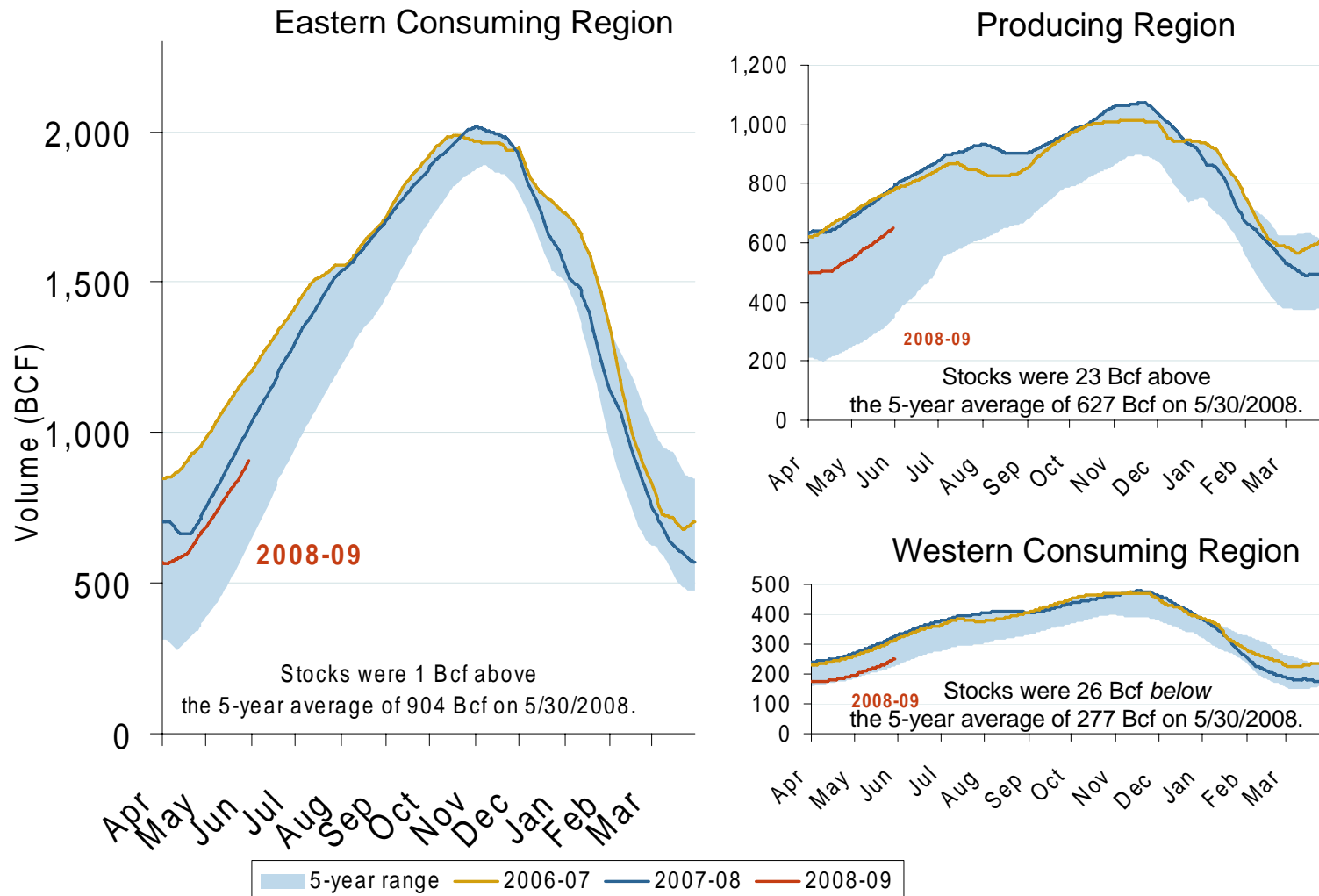


Source: Derived from EIA data.

Updated June 6, 2008

2003

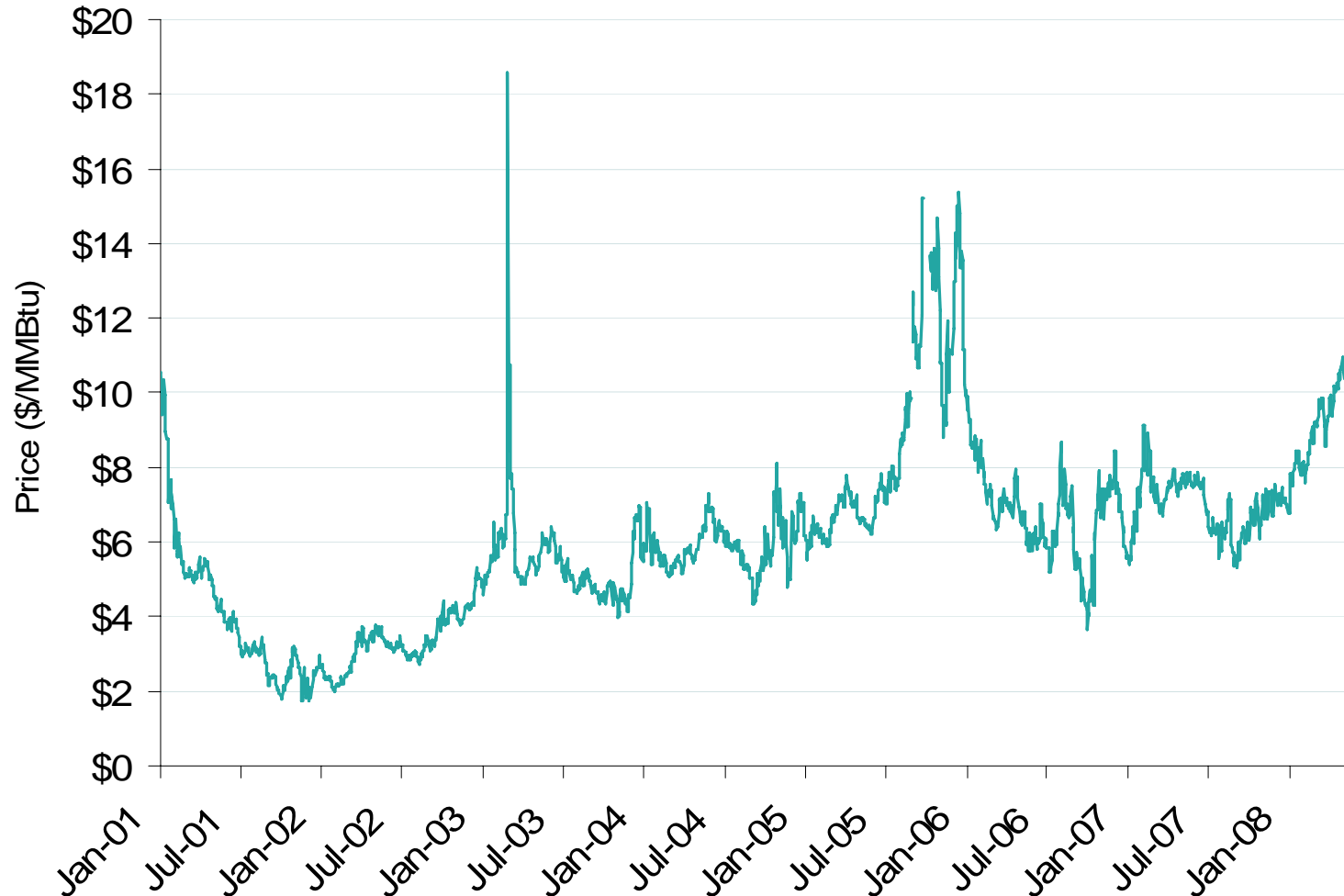
## Regional Totals of Working Gas in Storage



Source: Derived from EIA data.

Updated June 6, 2008 2004

## Henry Hub Natural Gas Daily Spot Prices 2001-2008

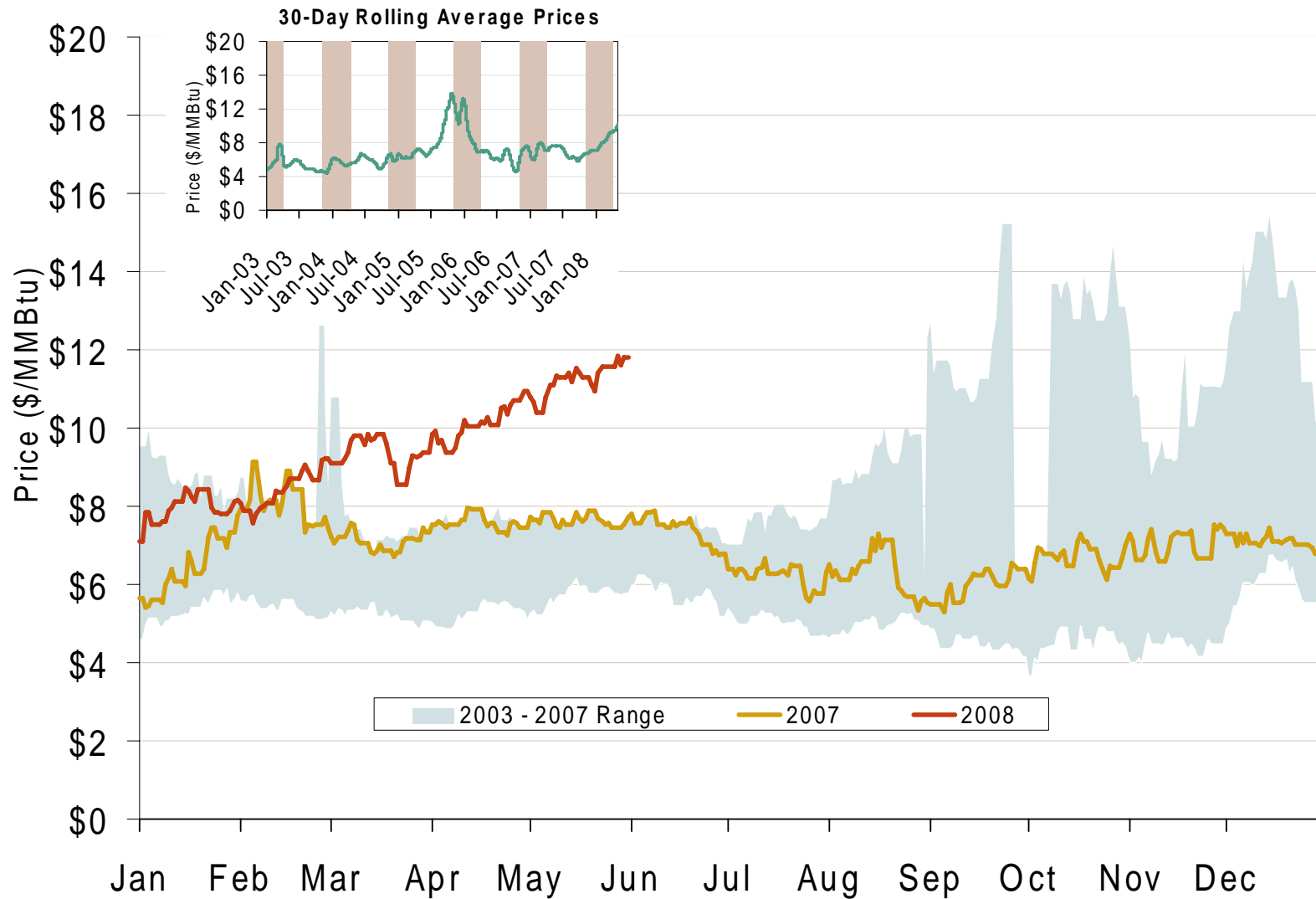


Source: Derived from *Platts* data.

Updated June 6, 2008 2001

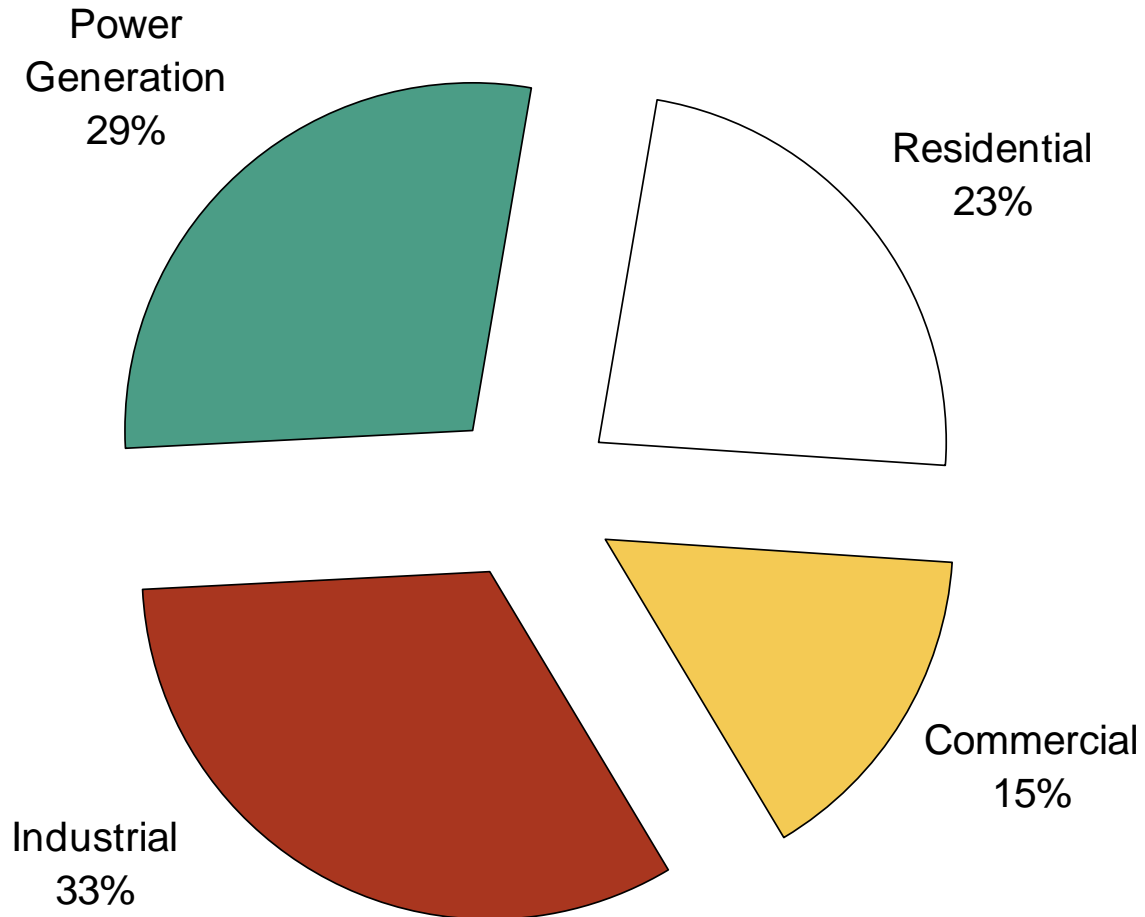
Federal Energy Regulatory Commission • Market Oversight @ FERC.gov

## Henry Hub Natural Gas Daily Spot Prices 2007, 2008 and 2003-2007 Year Range



Source: Derived from *Platts* data.

## U.S. Natural Gas Demand Shares by Sector in 2005

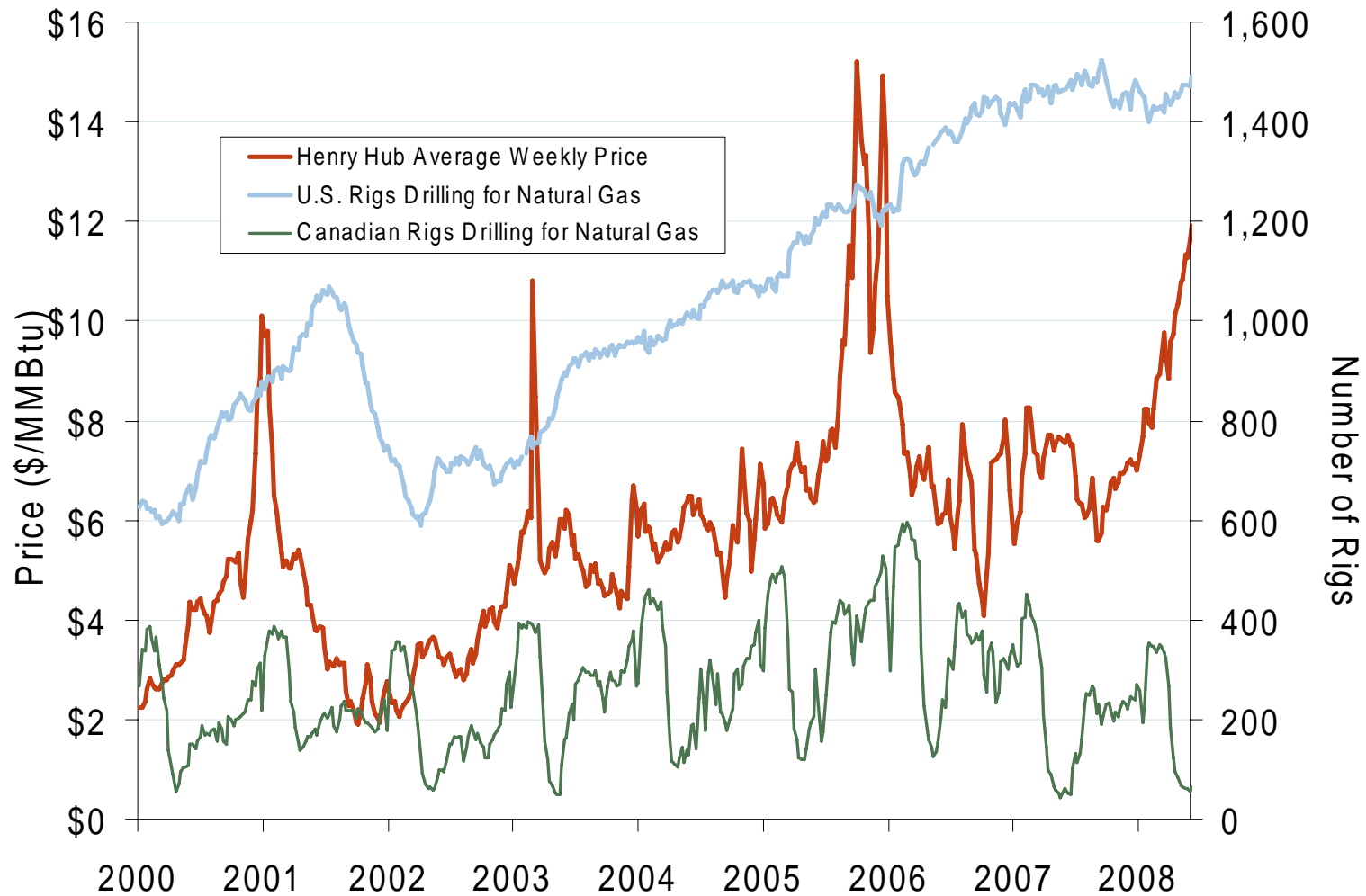


Source: Derived from EIA data.

Updated February 10, 2007

2002

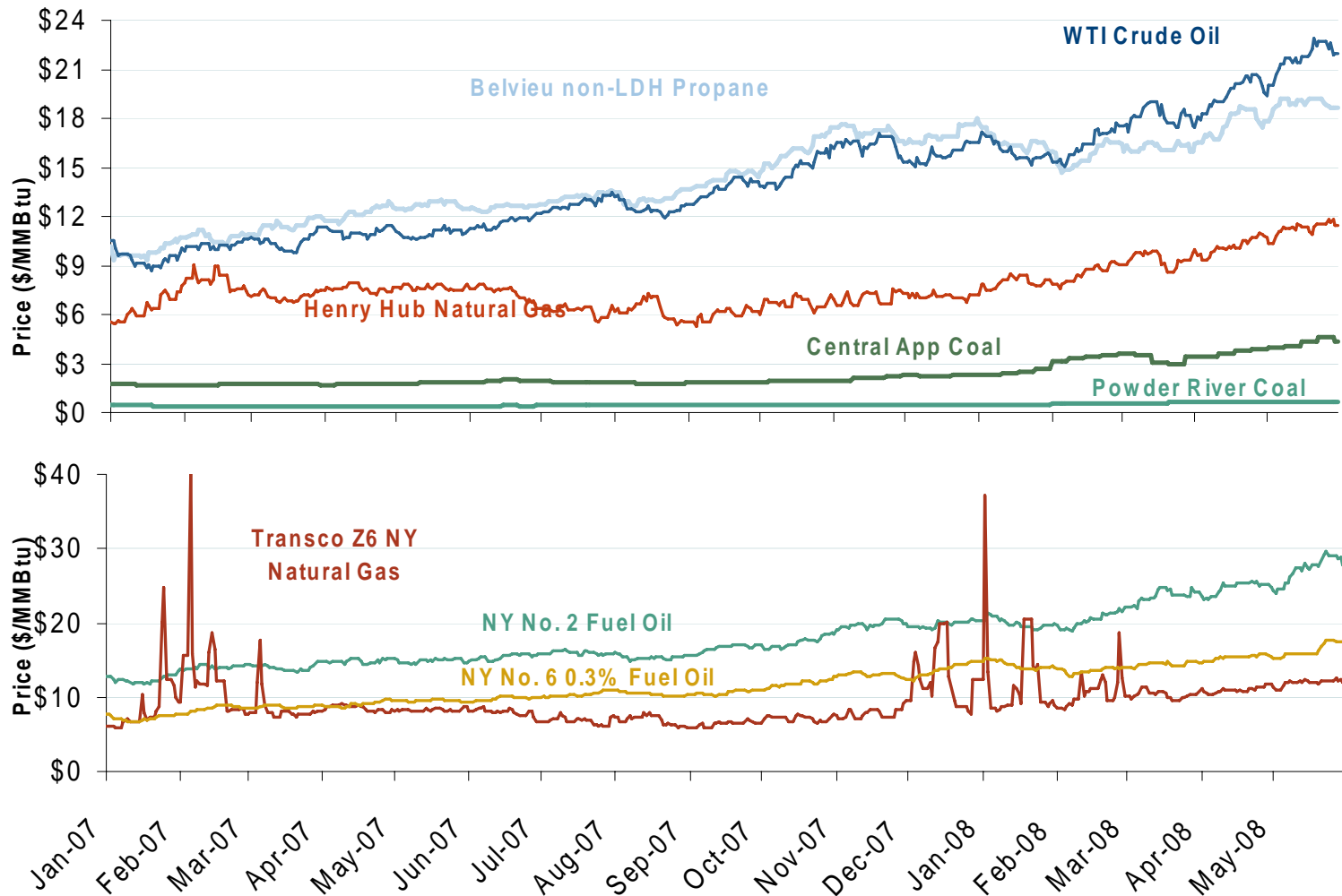
## U.S. and Canadian Natural Gas Drilling Rig Count and Daily Spot Prices



Source: Derived from *Platts* and *Baker Hughes* data.

Updated June 6, 2008 2007

# Oil, Coal and Natural Gas Daily Spot Prices



Source: Derived from ICE and Bloomberg data.

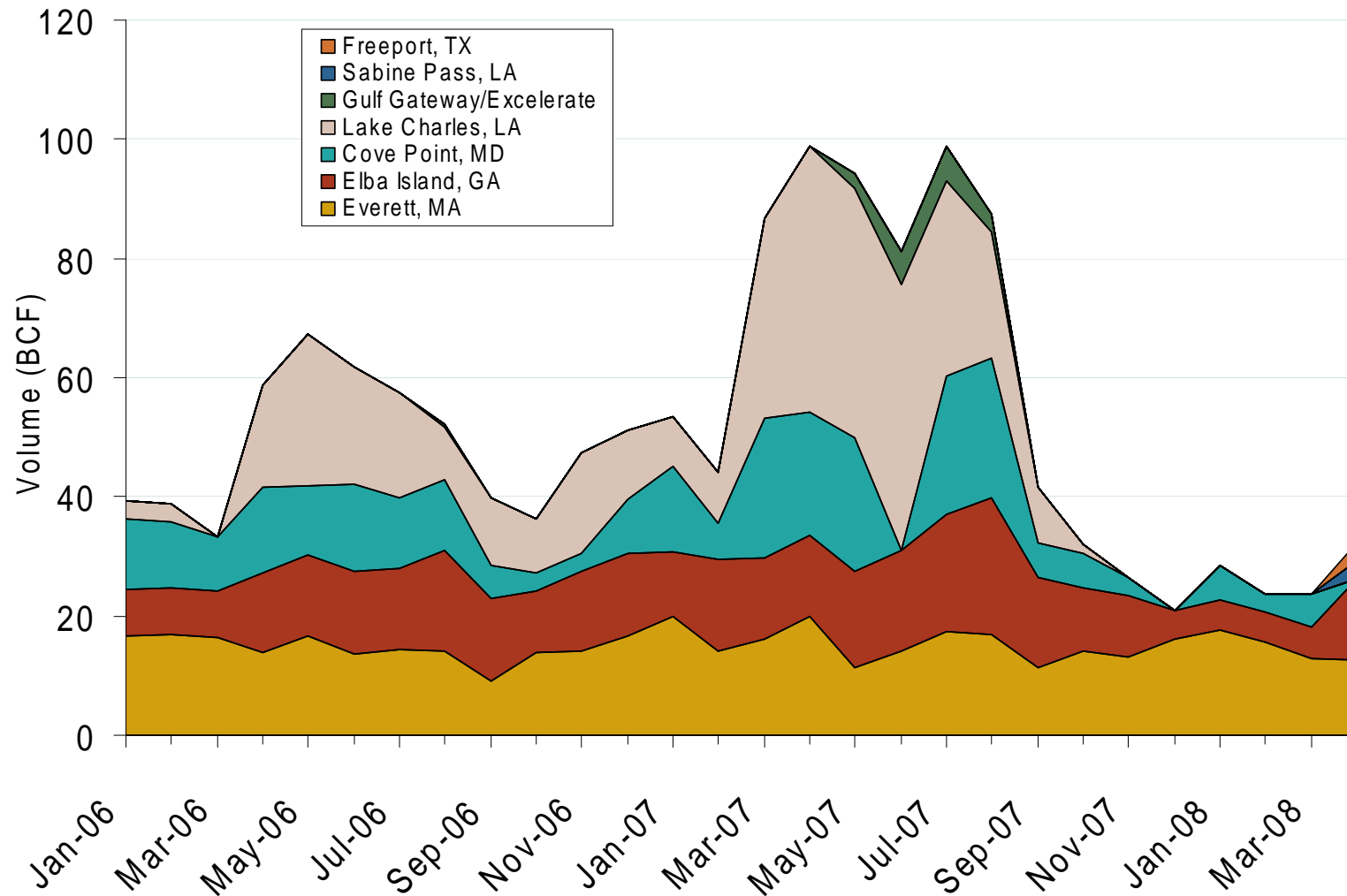
Note: Coal prices are quoted in \$/ton. Conversion factors to \$/MMBtu are based on contract specifications of 12,000 btus/pound for Central Appalachian coal and 8800 btus/pound for Powder River Basin coal.

Updated June 6, 2008

2160

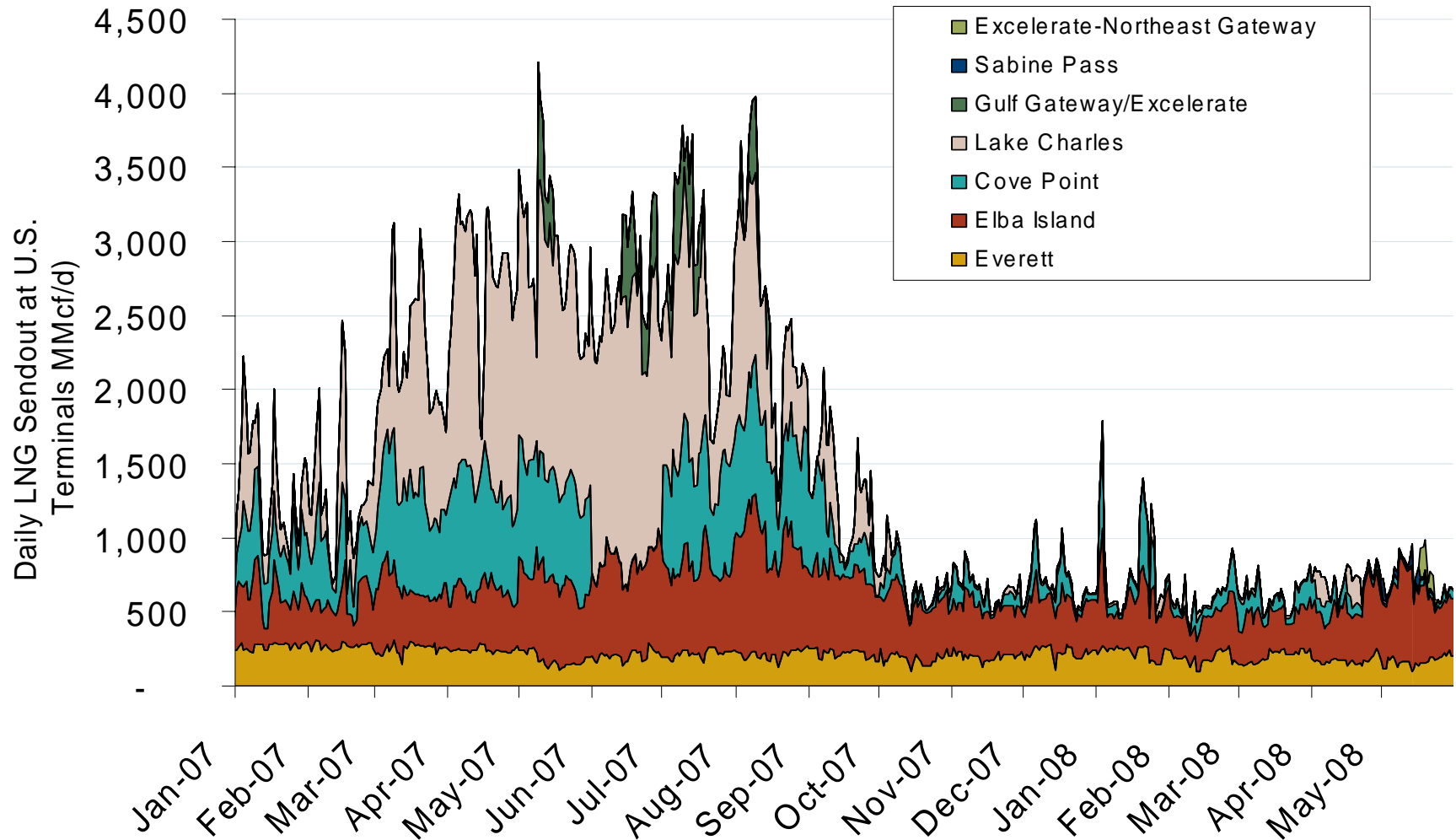


## Monthly Gas Imports at Existing U.S. LNG Facilities



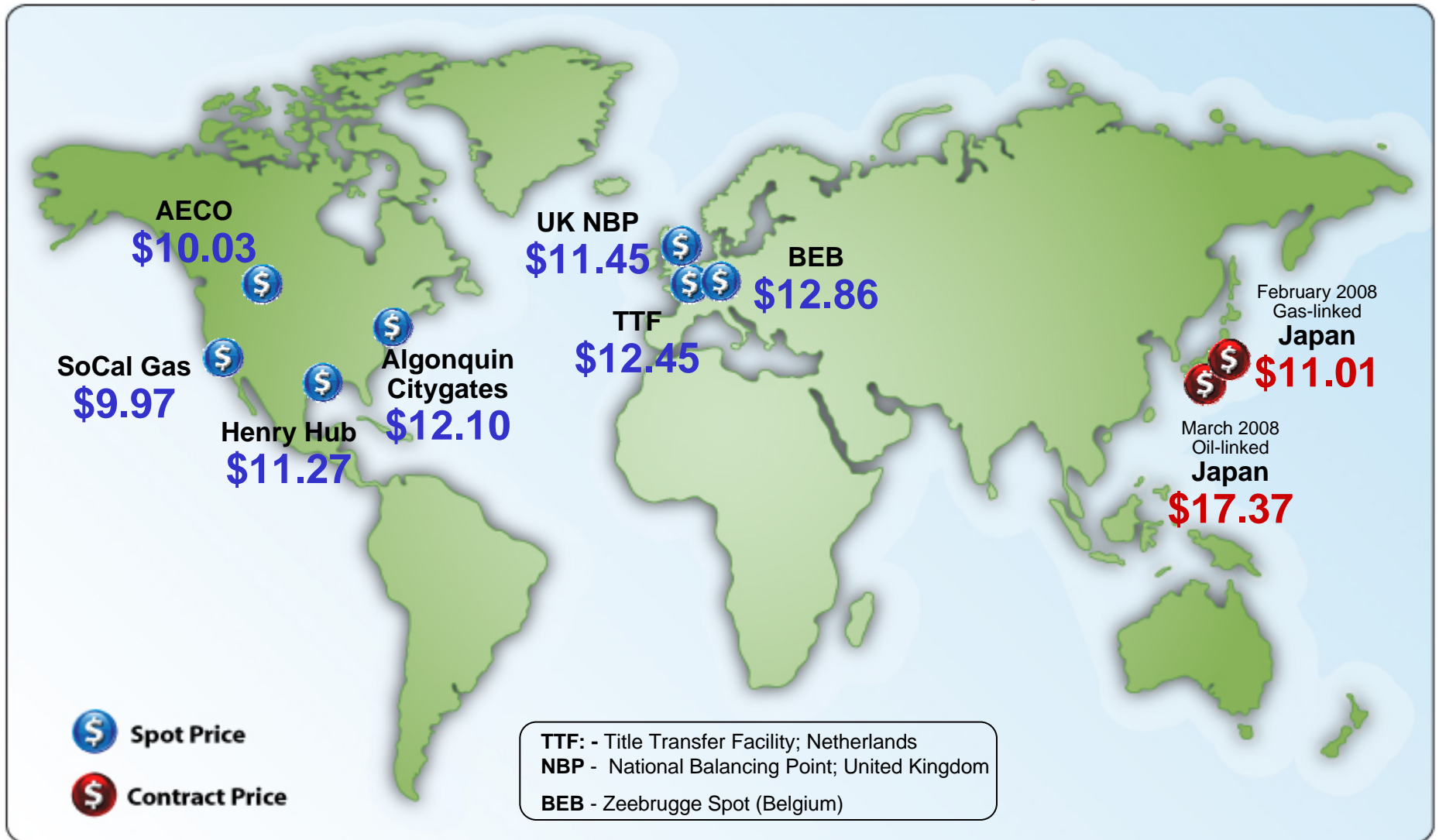
Source: Derived from EIA data.

## Daily Gas Sendout from Existing LNG Facilities



Source: Derived from *Bentek* data. Excludes Everett LNG delivered via truck and consumed by the Mystic plant.

## World Natural Gas Prices for May 2008

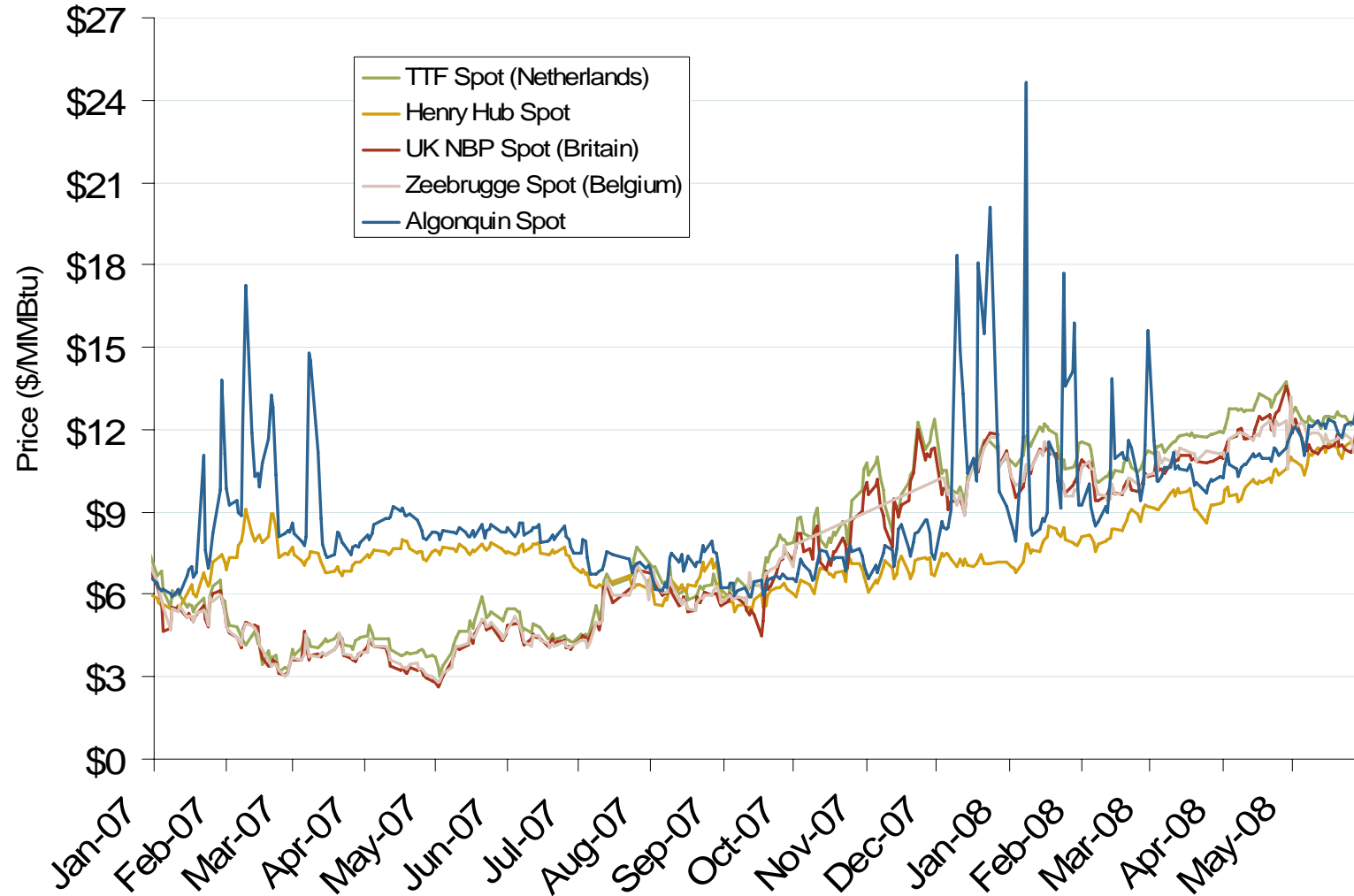


Source: Derived from *Bloomberg, ICE, ICAP and LNG Japan Corp.* data. Spot Price is a monthly average of daily prices. Contract Price is a monthly price. All prices in \$US/MMBtu.

Updated June 6, 2008

2165

## Atlantic Basin European and US Spot Natural Gas Prices



Source: Derived from Bloomberg and ICE data.

## Henry Hub and AECO Prompt-Month Futures Prices



Source: Derived from ICE data.

Updated June 6, 2008

2172