



Shoreline Assessment Job Aid

National Oceanic and Atmospheric Administration • NOAA Ocean Service
Office of Response and Restoration • Emergency Response Division



This job aid was produced and published by NOAA's Emergency Response Division (ERD). All photographs, with exception of the one on the cover, were contributed by Miles O. Hayes and Jacqueline Michel of Research Planning, Inc.

ERD draws on three decades of experience in responding with the U.S. Coast Guard to spill emergencies and resolving the often longer-term problems presented by hazardous waste sites, garnering a reputation for rapid, yet carefully considered and cost-effective environmental protection decisions.



U.S. DEPARTMENT OF COMMERCE
National Oceanic and Atmospheric Administration
NOAA Ocean Service

Office of Response and Restoration/Emergency Response Division
7600 Sand Point Way N.E., Seattle, Washington 98115
(206) 526-6317 or orr.library@noaa.gov

Introduction	1
--------------------	---

Beach Profiles	2
----------------------	---

Photographs	4
-------------------	---

Surface Oil Distribution – Percent Cover

C Continuous.....	4
--------------------------	---

B Broken.....	4
----------------------	---

P Patchy.....	5
----------------------	---

S Sporadic	5
-------------------------	---

Surface Oiling Descriptors – Thickness

PO Pooled oil	6
----------------------------	---

CV Cover.....	6
----------------------	---

CT Coat.....	7
---------------------	---

ST Stain	7
-----------------------	---

FL Film.....	8
---------------------	---

Surface Oiling Descriptors – Type

FR Fresh oil	9
---------------------------	---

MS Mousse.....	9
-----------------------	---

TB Tarballs.....	10
-------------------------	----

PT Patties.....	10
------------------------	----

TC Tar	11
---------------------	----

SR Surface oil residue	11
-------------------------------------	----

AP Asphalt pavements	12
-----------------------------------	----

Subsurface Oiling Descriptors – Type

SAP Subsurface asphalt pavement.....	13
---	----

OP Oil-filled pores.....	13
---------------------------------	----

PP Partially filled pores.....	14
---------------------------------------	----

OR Oil residue.....	14
----------------------------	----

OF Oil film.....	15
-------------------------	----

CONTENTS

Sediment Types

R	Bedrock outcrop.....	16
B	Boulder	16
C	Cobble.....	17
P	Pebble	17
G	Granule	18
S	Sand	18
M	Mud.....	19

Shoreline Types by ESI rank

1	Exposed rocky shores.....	20
2	Exposed rocky platforms.....	20
3	Fine-grained sand beaches	21
4	Coarse-grained sand beaches	21
5	Mixed sand and gravel beaches	21
6a	Gravel beaches.....	22

Shoreline Types *continued*

6b	Riprap structures.....	22
7	Exposed tidal flats.....	22
8a	Sheltered rocky shores.....	23
8b	Sheltered man-made structures.....	23
9	Sheltered tidal flats.....	23
10a	Salt to brackish marshes.....	24
10b	Freshwater marshes	24
10c	Swamp	25
10d	Mangroves.....	25

Cleanup Methods

Barriers/berms.....	26
Physical herding	26
Manual oil removal/cleaning	27
Mechanical oil removal.....	27

Cleanup Methods *continued*

Sorbents 28

Vacuum 28

Debris removal 29

Sediment reworking/tilling 29

Vegetation cutting/removal 30

Flooding (deluge) 30

Low-pressure flushing 31

High-pressure flushing 31

High-pressure, hot-water flushing 32

Percent Cover Estimation Charts 33

Shoreline Assessment Job Aid

When oil contaminates shoreline habitats, responders must survey the affected areas to determine the appropriate response. Though general approvals or decision tools for use of shoreline cleanup methods may be developed during planning stages, responders must base specific cleanup recommendations on field data on the shoreline habitats, type and degree of shoreline contamination, and spill-specific physical processes.

A shoreline assessment program is:

- a **SYSTEMATIC** approach that uses **STANDARD** terminology to collect data on shoreline oiling conditions and support decision making for shoreline cleanup.
- **FLEXIBLE** in terms of scale of the survey and detail of the data sets collected.
- **MULTI-AGENCY**, with **TRAINED** representatives from all interested parties who have authority to make decisions.

NOAA published the Shoreline Assessment Manual (Report No. HAZMAT 97-4) which outlines methods for planning and conducting shoreline assessment and incorporating the results into the decision-making process for shoreline cleanup at oil

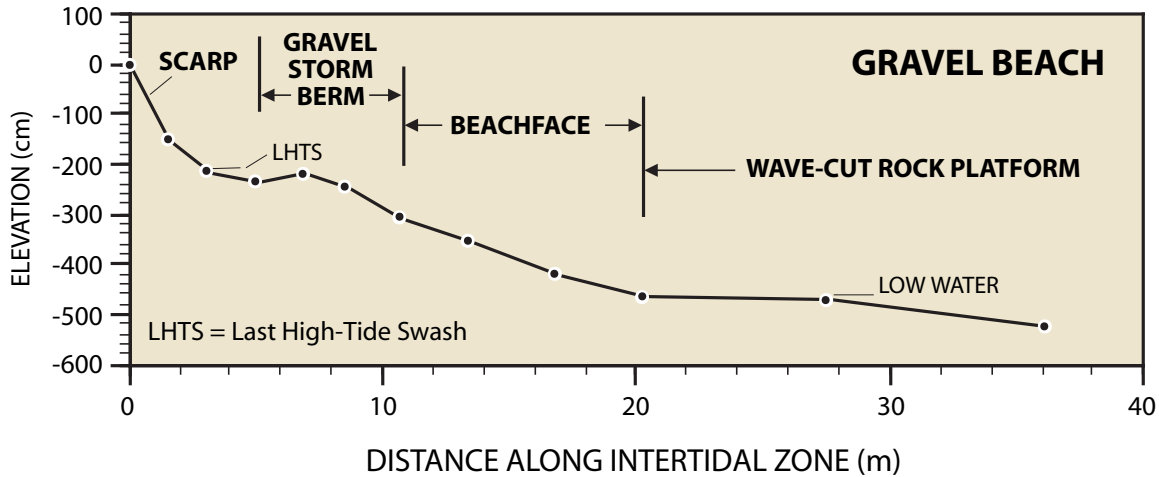
spills. This job aid was developed to supplement the manual, providing a visual guide to many of the terms used during shoreline assessments.

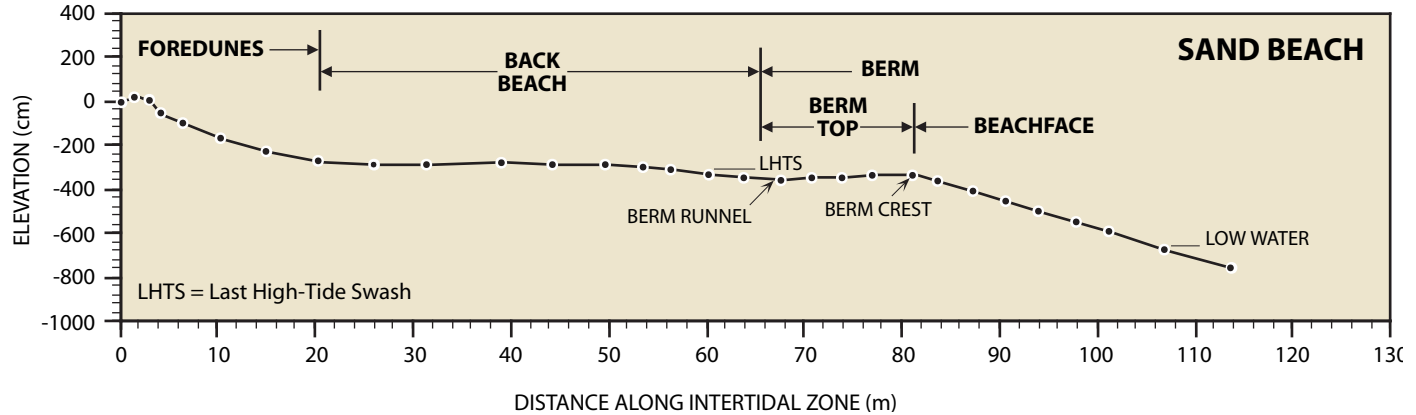
Photographs are included for the following terminology:

- Oil distribution (as ranges in percent oil cover)
- Surface oiling thickness descriptors
- Surface oiling type descriptors
- Subsurface oiling type descriptors
- Sediment types
- Shoreline types
- Cleanup methods

Beach terminology is defined on typical cross-sections of sand and gravel beaches. Percent cover estimation charts are also provided.

At a spill, it is important to “calibrate” by having all team members visit a segment together and agree on how the oiling descriptors will be applied for the specific spill when used with the *Shoreline Assessment Manual*. This job aid is helpful for calibrating and promoting consistency among terms.





C

Continuous

91-100% cover

(seen here as black oil on light sand beach)



Broken

51-90% cover

(seen here as brown oil on tan sand beach)

B



P

Patchy

11-50% cover

(seen here as black oil bands on a white sand beachface)**Sporadic**

1-10% cover

(seen here as brown oil bands on a white sand beachface)

S



PO

Pooled Oil

fresh oil or mousse > 1 cm thick

(seen here as accumulation around a large boulder)

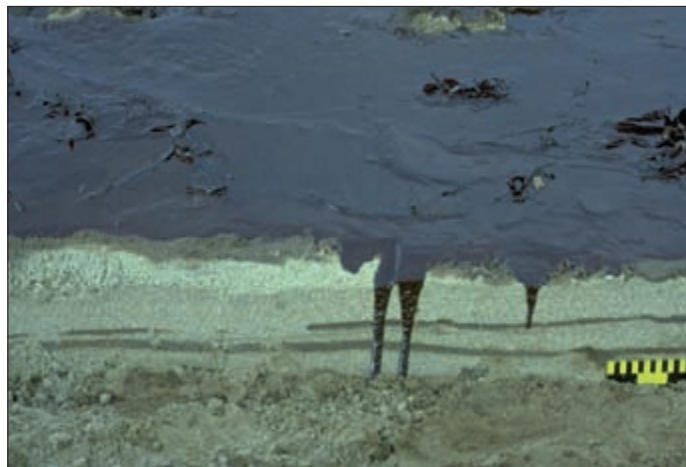


Cover

oil or mousse > 0.1 cm to < 1 cm thick

(seen here as oil covering sand beach surface and running into a small trench)

CV



CT

Coat

visible coating of oil < 0.1 cm – can be scraped off with fingernail

(seen here as a thin layer of oil on riprap)

**Stain**

visible oil which cannot be scraped off with fingernail

(seen here as splotches on cobbles)

ST

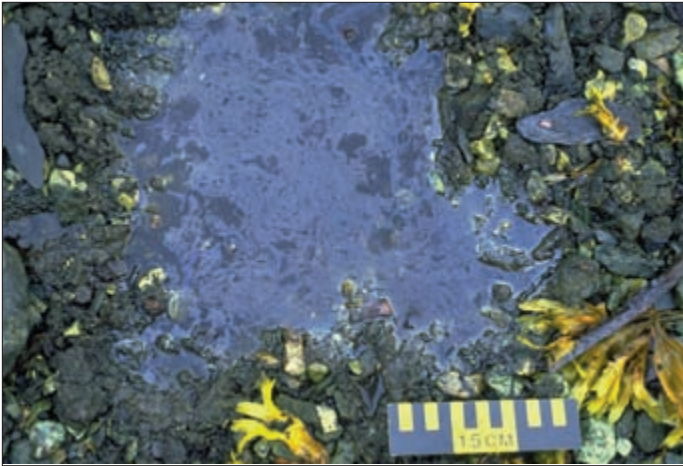


FL

Film

transparent or iridescent sheen, or oily film

(seen here as oil sheen floating on water)



FR

Fresh Oil

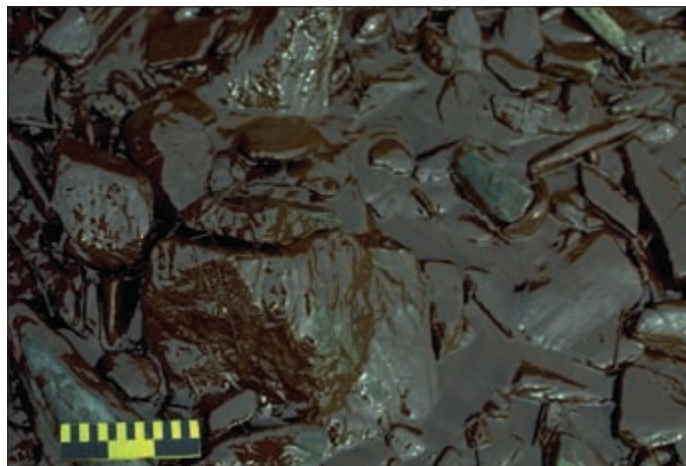
unweathered, liquid oil

**Mousse**

emulsified oil

(seen here as brown oil coating cobbles)

MS



TB

Tarballs

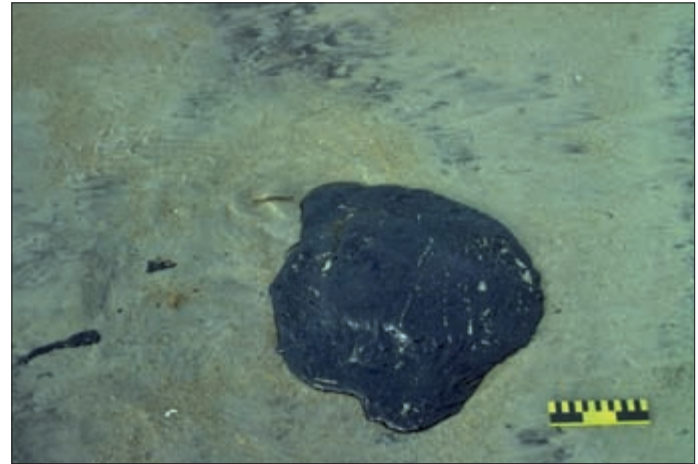
discrete accumulations of oil < 10 cm in diameter
(seen here scattered on sand beach)



PT

Patties

discrete accumulations of oil > 10 cm in diameter
(seen here as single black patty on sand beach)



TC

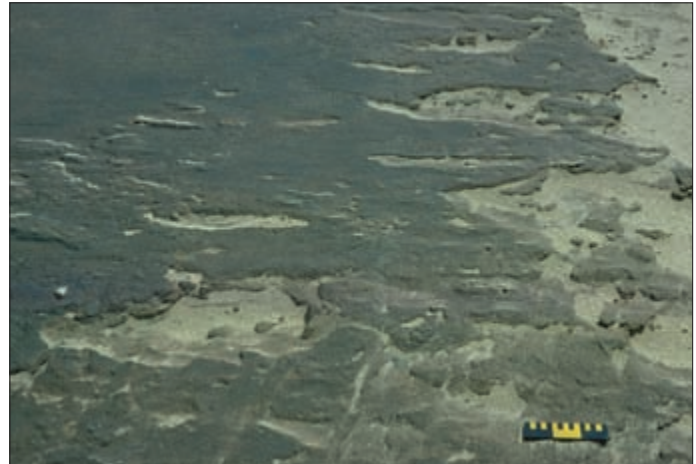
Tar

highly weathered oil of nearly solid consistency

**Surface Oil Residue**

non-cohesive, heavily oiled surface sediments characterized as soft, incipient asphalt pavements

SR

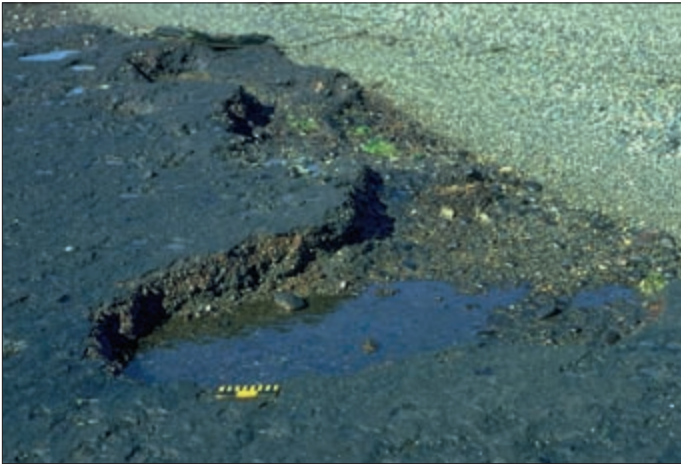


AP

Asphalt Pavements

cohesive, heavily oiled surface sediments

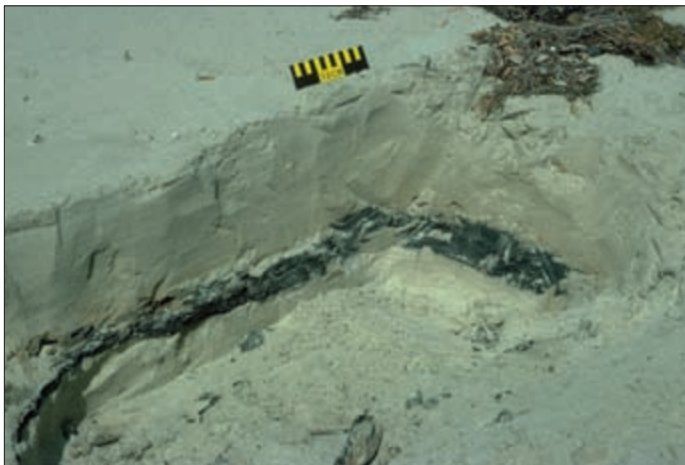
(seen here as thick black deposit on a beachface)



SAP

Subsurface Asphalt Pavement

a buried layer of hardened oil

(seen here as black layer buried in a white sand beach)**Oil-filled Pores**

pore spaces are completely filled with oil to the extent that oil flows out of sediments when disturbed

(seen here as brown oil pebbles)

OP



PP

Partially Filled Pores

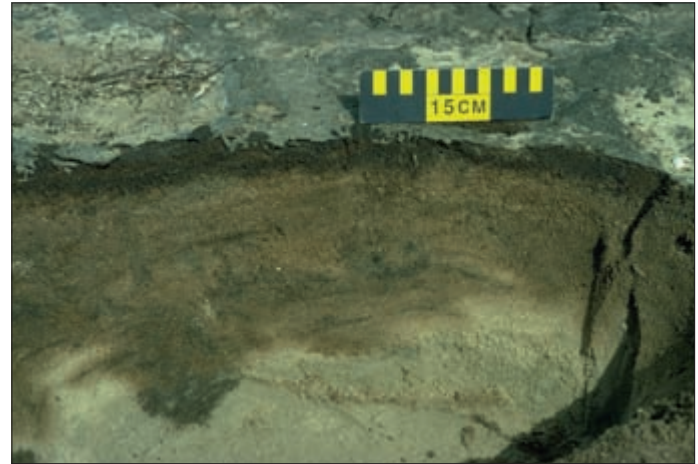
pore spaces filled with oil, but generally does not flow out when disturbed



Oil Residue

sediments visibly oiled with black/brown coat or cover on clasts, but little or no accumulation of oil within pore spaces

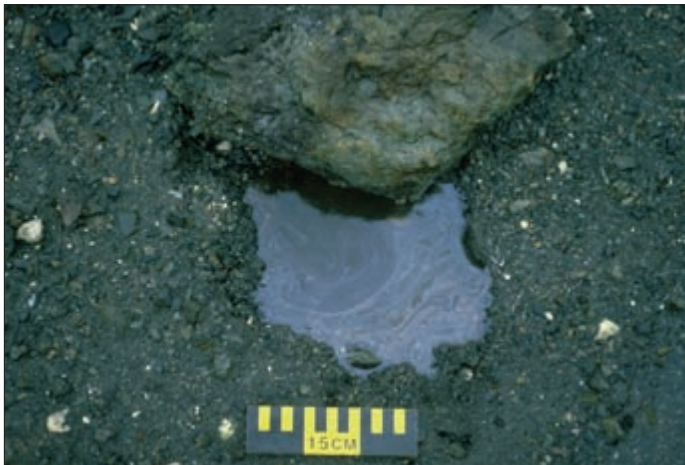
OR



OF

Oil Film

sediments are lightly oiled with an oil sheen or stain on the clasts.



R

Bedrock Outcrop



Boulder
>256 mm in diameter

B



C

Cobble

64 – 256 mm in diameter

**Pebble**

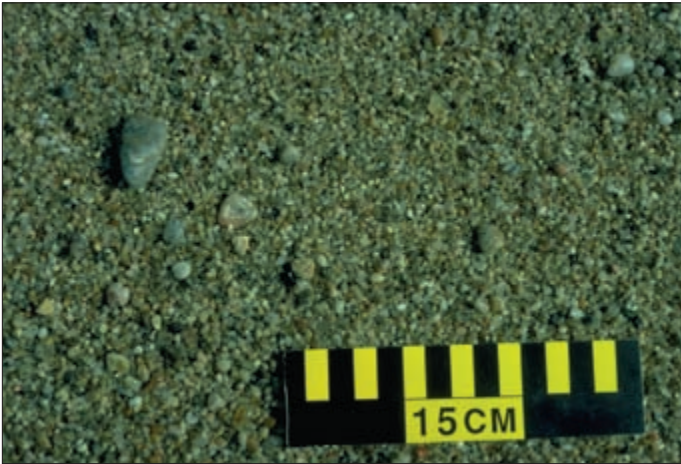
4 – 64 in diameter

P



G

Granule
2 – 4 mm



Sand
0.06 – 4 mm

S



M

Mud
silt and clay



1

Exposed Rocky Shores

(also includes exposed seawalls)



Exposed Rocky Platforms

(also includes clay scarps)

2



3

**Fine-grained
Sand Beaches***(also includes scarps in sand)*

4

**Course-grained
Sand Beaches**

5

**Mixed Sand and
Gravel Beaches***(also includes mixed sand and shell
beaches)*

6a

Gravel Beaches
(also includes shell beaches)



6b

Riprap Structures



Exposed Tidal Flats

7



8a

Sheltered
Rocky Shores



8b

Sheltered
Man-made Structures



9

Sheltered
Tidal Flats



10a

Salt to Brackish Marshes



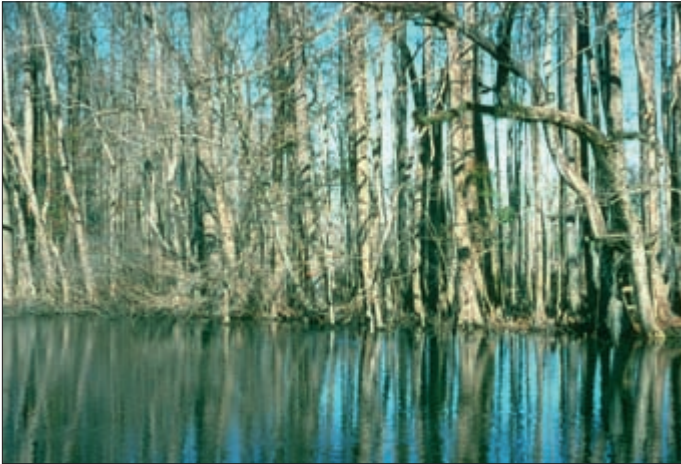
Freshwater Marshes

10b



10c

Swamps



Mangroves

10d



Barriers/Berms



Physical Herding



Manual Oil Removal/Cleaning**Mechanical Oil Removal**

Sorbents



Vacuum



Debris Removal**Sediment Reworking/Tilling**

Vegetation Cutting/Removal



Flooding (deluge)



Low-pressure Flushing



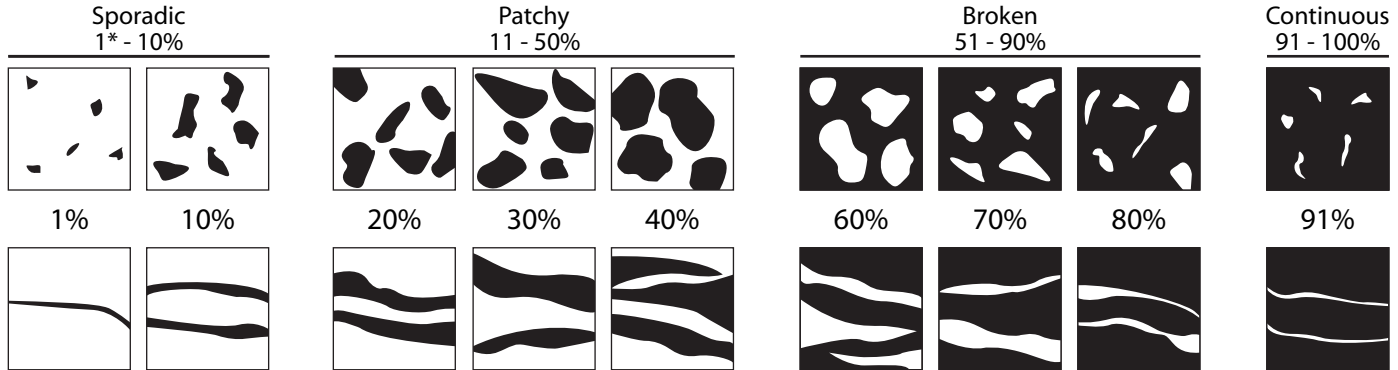
High-pressure Flushing



High-pressure, Hot-water Flushing

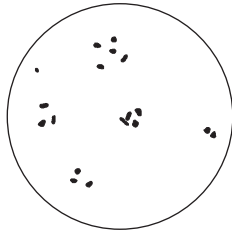


These charts are aids to help you estimate the percent oil coverage in the area you are observing. The black shading represents oil. Do not spend time trying to get a precise measure of percent cover; the four ranges listed are usually sufficient. The chart below would prove most helpful in oil band situations; the one on the following page is best for discrete oil deposits such as tarballs.

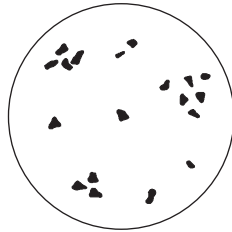


* Trace = < 1%

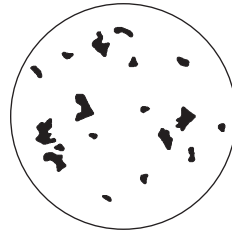
Chart source: Owens, E.H., and G.A. Sergy. Field Guide to the Documentation and Description of Oiled Shorelines. Environment Canada, Edmonton, Alberta, Canada. March 1994. ISBN 0-662-22048-X.



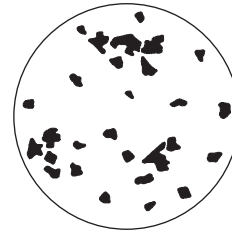
1%



3%



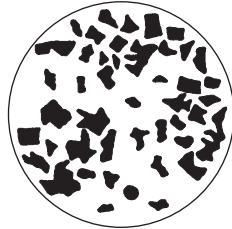
5%



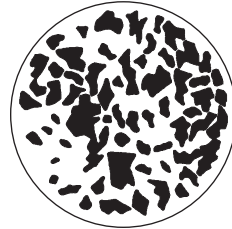
10%



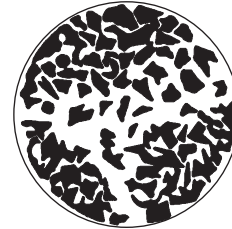
20%



30%



40%



50%



Carlos M. Gutierrez
Secretary, U.S. Department of Commerce

Vice Admiral Conrad C. Lautenbacher, Jr., USN (Ret.)
Under Secretary for Oceans and Atmosphere and NOAA Administrator

John H. Dunnigan
Assistant Administrator,
Ocean Services and Coastal Zone Management
NOAA Ocean Service

August 2007

U.S. Department of Commerce • National Oceanic and Atmospheric Administration • NOAA Ocean Service

