

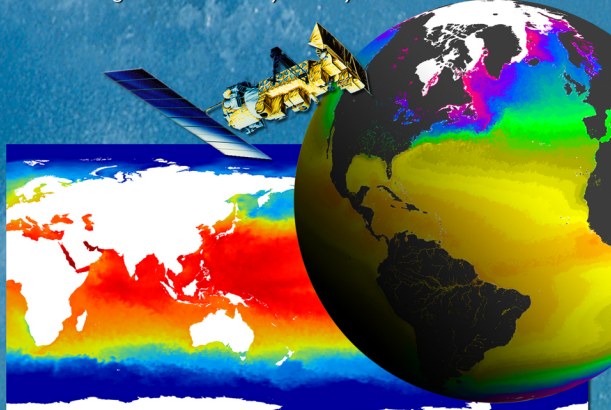
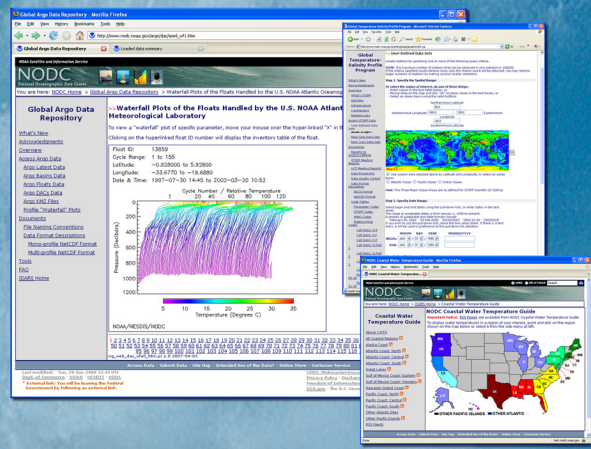


NOAA National Oceanographic Data Center

Marine Data Stewardship Division



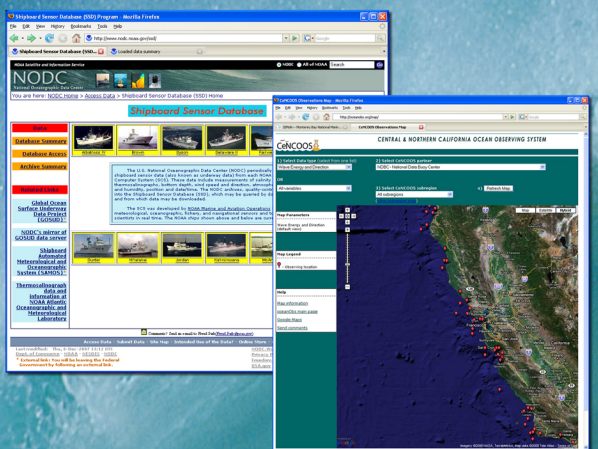
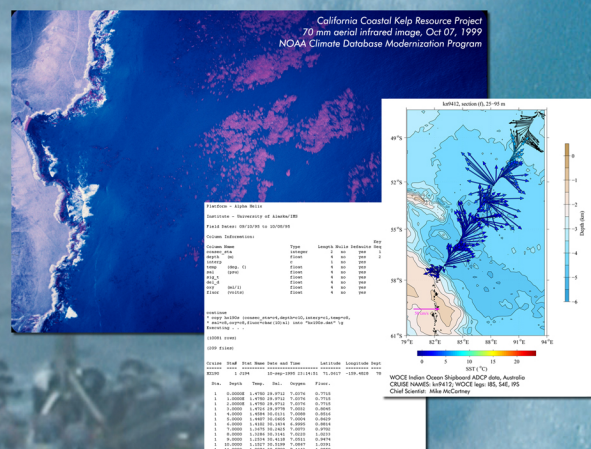
The NODC Marine Data Stewardship Division archives and distributes oceanographic data and develops products to better understand marine ecosystem dynamics for improved near real-time decision support and understanding of the processes affecting climate change. Division personnel ingest data from ocean observation programs, manage, preserve, and disseminate data and data information, and develop products that improve the understanding of marine ecosystem dynamics.



Operational Sea Surface Temperature and Sea Ice Analysis 21 August 2007
Graphic developed with data from the GODAE High Resolution Sea Surface Temperature (GHRSSST) project
© Crown Copyright 2007, published by the Met Office.

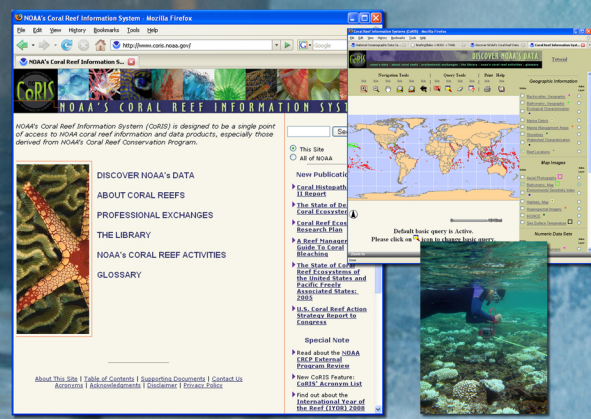
Key participants in the development, data acquisition, and maintenance of online global ocean observing systems including Argo, GTSPP, and the Coastal Water Temperature Guide.

Scientific stewardship of satellite-based oceanographic data and the development and distribution of climate data records through Pathfinder and the GODAE High Resolution Sea Surface Temperature (GHRSSST) Projects.



Acquires, archives, and provides access to originators' marine environmental data from U.S. and foreign sources with comprehensive data descriptions.

Supplies archival services to NOAA-funded organizations that assemble *in situ* data, with focus on data from ocean observing systems and underway ship data.



Manages the NOAA Coral Reef Conservation Program's efforts to provide a single web-based discovery and access point to NOAA and other coral reef data and information.

Provides customer support services to all users of NODC's marine data, with additional services supplied through online and offline publications and exhibitions.