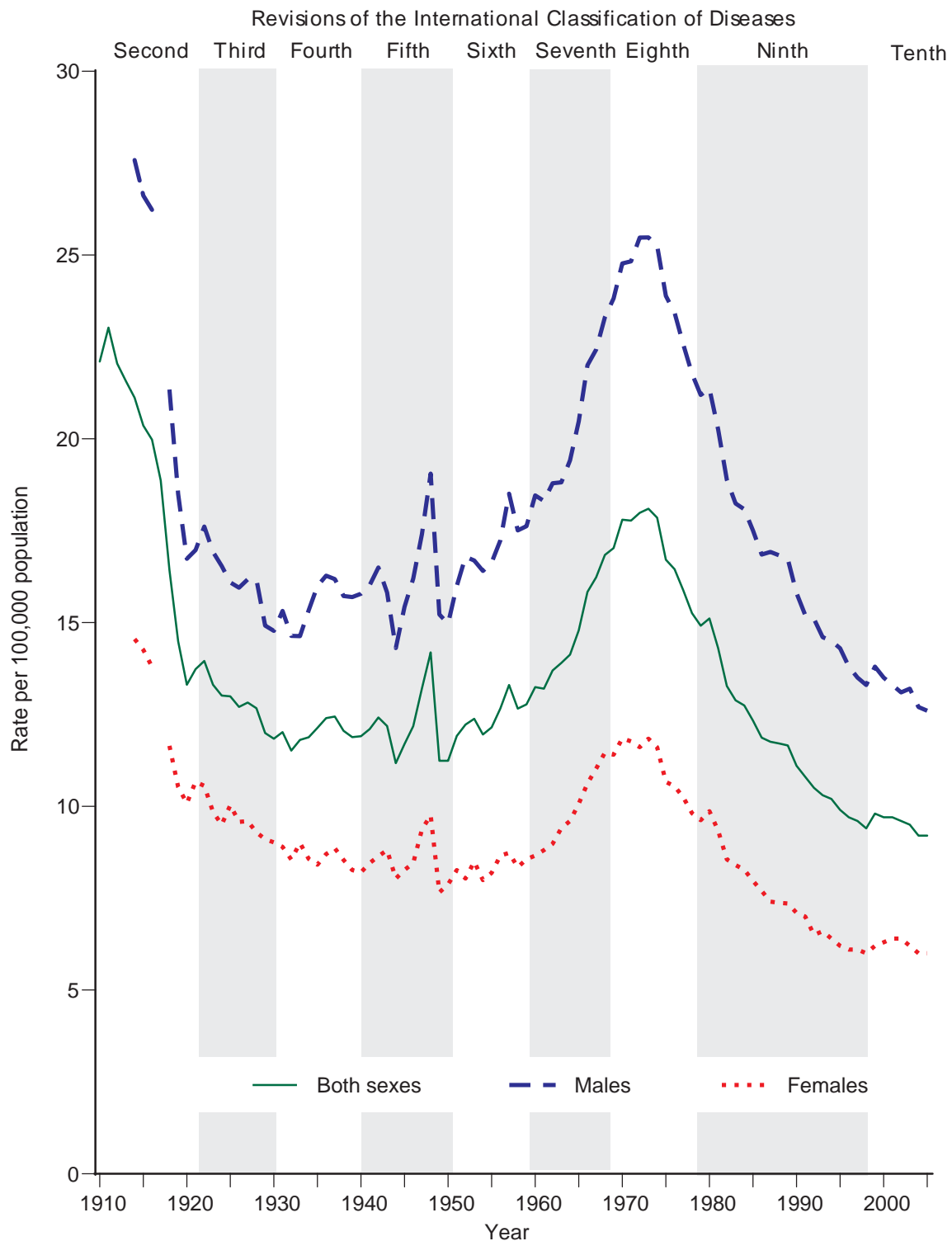


Age-adjusted death rates from liver cirrhosis by sex (death registration States, 1910–32, and United States, 1933–2005)



Because there was no information available on deaths by sex for 1910–1913 and 1917, age-adjusted death rates for males and females based on the year 2000 standard population were not calculated for those years.

Source: Yoon, Y.H.; and Yi, H. *Surveillance Report #83: Liver Cirrhosis Mortality in the United States, 1970–2005*. Bethesda, MD: NIAAA, Division of Epidemiology and Prevention Research, Alcohol Epidemiologic Data System, August 2008, e-pub @ <http://pubs.niaaa.nih.gov/publications/surveillance83/Cirr05.htm>.

Prepared: February 2009