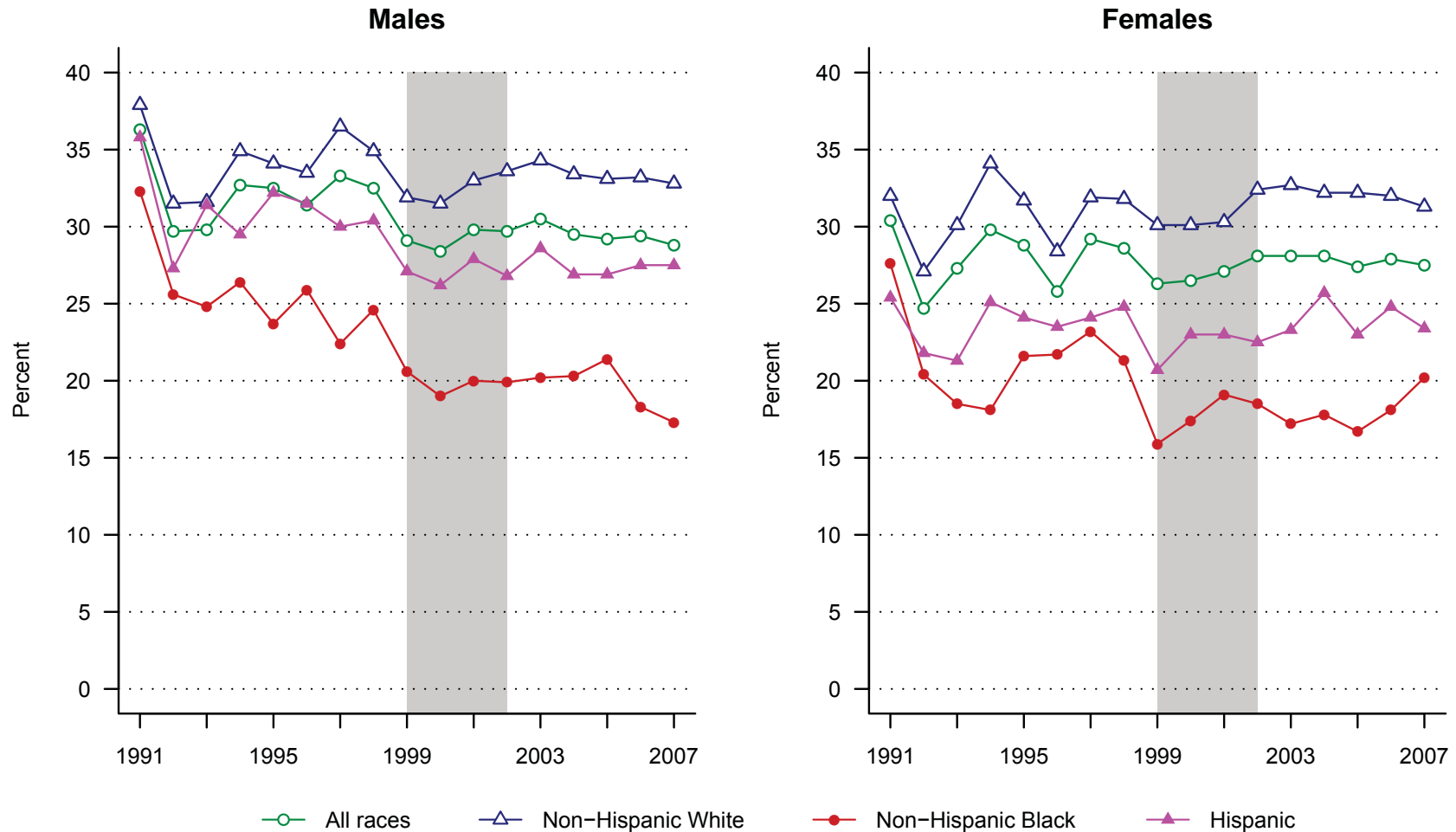


Prevalence of drinking in the past 30 days among 12–20 year olds, by sex and race/Hispanic origin, National Survey on Drug Use and Health, 1991–2007



[Shaded area marks the implementation of a major redesign to the NSDUH survey in 1999 and methodological changes in 2002.]

Source: Chen, C.M.; Yi, H.; Williams, G.D.; and Faden, V.B. *Surveillance Report #86. Trends in Underage Drinking in the United States, 1991–2007*. Bethesda, MD: NIAAA, Division of Epidemiology and Prevention Research, Alcohol Epidemiologic Data System, January 2009, e-pub @ <http://pubs.niaaa.nih.gov/publications/surveillance86/Underage07.htm>.

Prepared: February 2009