



Suisun Bay National Reserve Fleet Assessment Project

N OAA's Office of Response and Restoration is investigating environmental contaminants in and around the National Reserve Fleet in Suisun Bay, California. During the summer NOAA's team collected surface and subsurface sediment samples, as well as tissue samples from mussels and clams. Samples were analyzed in the laboratory from late August through October for contaminants. These data were validated and entered into a database for review and analysis. A data report is planned for early 2009. This fact sheet is part of continuing series of monthly updates.

NOAA's Damage Assessment, Remediation, and Restoration Program (DARRP) collaborates with other agencies, industry, and citizens to protect and restore coastal and marine resources threatened or injured by oil spills, releases of hazardous substances, and vessel groundings.

Query Manager is a database that holds sediment and tissue chemistry results. It is freely downloadable from NOAA's website and can be used to extract queried data in table format for further evaluation or to display results on a map.

Recent Progress

NOAA received the tissue data for both mussels and clams from the analytical laboratories in November. As with the previously collected sediment data all tissue samples went through a data validation process. Data validation includes a detailed narrative regarding the project and sample results, chain-of-custody forms, analytical methods, and summaries of quality assurance/quality control sample results (QA/QC), such as laboratory controls and instrument calibrations as well as standard and method blank results. This process helps to ensure data accuracy for the reported results.

The tissue data were entered into Query Manager, NOAA's environmental data management and query tool. NOAA continued to analyze the data results and developed a working draft report for technical review in mid December. NOAA conducted an on-line virtual meeting with stakeholders on Dec. 18th to provide an overview of the working draft report. The team demonstrated the use of the Query Manager database to ensure that stakeholders have full access to the project data.

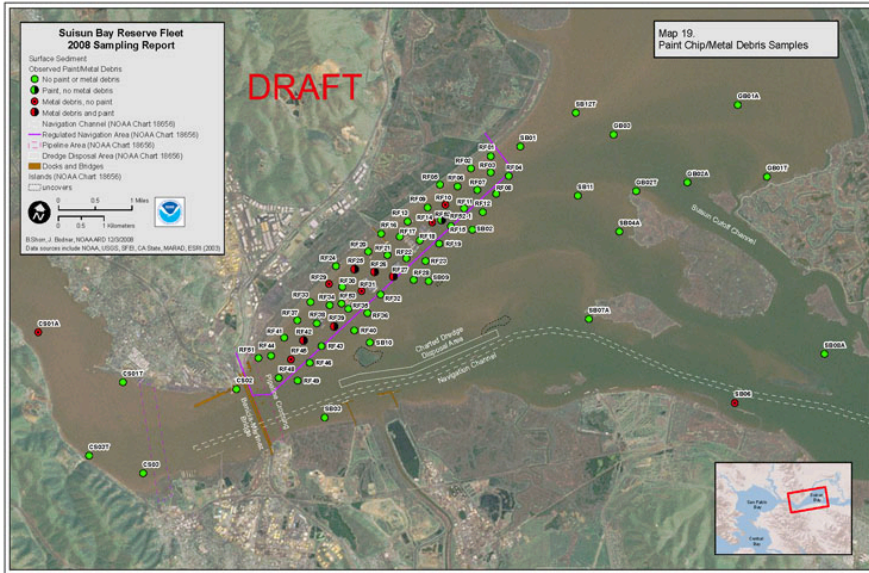
The screenshot displays the Query Manager software interface. At the top, it says "Query Manager Version 2.61" and "Developed by Office of Response and Restoration, NOAA". Below this is a table with columns for Station ID, Station Name, Stationed, and Stationed Date. The table lists various stations in Suisun Bay, such as 09151 AD, 09152 AD, etc., with their respective station names and dates. To the right of the table is a map of Suisun Bay with various sampling stations marked with colored dots. A legend in the bottom right corner of the map identifies the symbols for different types of stations: Stationed (blue circle), Stationed Date (red circle), and Stationed Date (green circle).

Next Steps

NOAA has requested technical comments back on this working draft by January 16th in order to meet the schedule deadlines.

If requested NOAA will meet one-on-one with stakeholders to clarify and questions they may have about the report or accessing these data.

NOAA will continue to revise the draft report and prepare for document release at the end of February.



This map show results of NOAA's surface sediment grab sampling for paint chips and metal debris.

For More Information

Project leads:

Rob Ricker, (301) 713-4248
Rob.Ricker@noaa.gov

Michele Jacobi, (206) 526-6830
Michele.Jacobi@noaa.gov

To learn more about this project visit our Web site:
<http://www.darrp.noaa.gov/>

Suisun Bay Timeline

