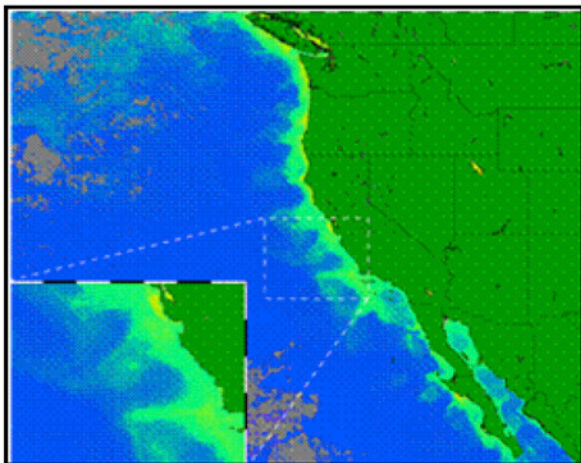




Preview the Satellite Imagery

<http://coastwatch.noaa.gov>

For more information on the different satellites used and to see examples of satellite imagery, visit the CoastWatch homepage. There is no charge to download near real-time images. Use the "Product Search" to browse all data types.



For Your Area

Alaska

<http://cwatch.arh.noaa.gov>

Caribbean / Gulf of Mexico

<http://cwcarribbean.aoml.noaa.gov>

Central Pacific

<http://oceanwatch.pifsc.noaa.gov>

Great Lakes

<http://coastwatch.glerl.noaa.gov>

Northeast

<http://newton.gso.uri.edu/coastwatch/>

West Coast

<http://coastwatch.pfel.noaa.gov>

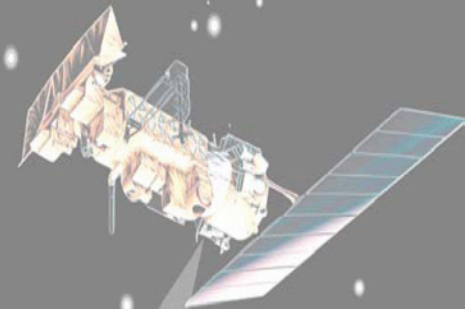
NOAA Satellites & Information

<http://www.nesdis.noaa.gov>

NOAA CoastWatch
DOC/NOAA/NESDIS/ORA/ORAD
NOAA Science Center, Room 601
5200 Auth Road
Camp Springs, MD 20746-4303
<http://coastwatch.noaa.gov>

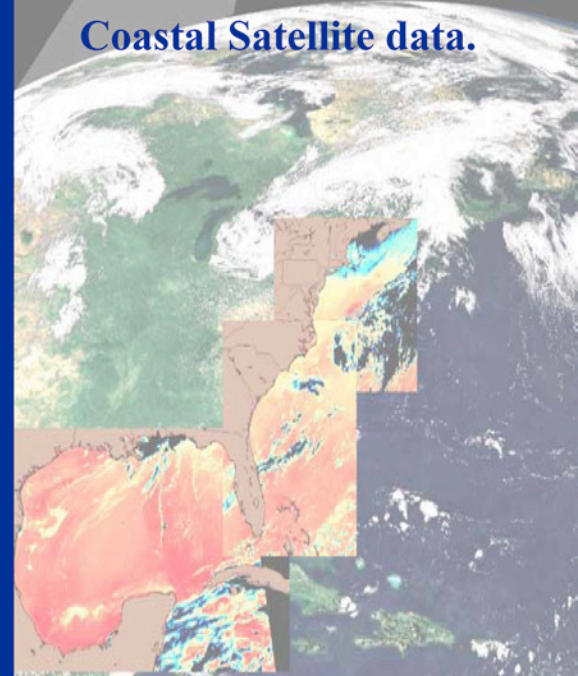


NOAA CoastWatch <http://coastwatch.noaa.gov>



CoastWatch

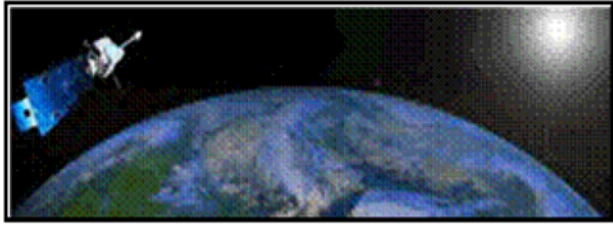
The Nation's Source for Coastal Satellite data.



US Department of Commerce
National Oceanic and Atmospheric
Administration
National Environmental Satellite, Data &
Information Service
Office of Research and Applications
Oceanic Research and Applications Division



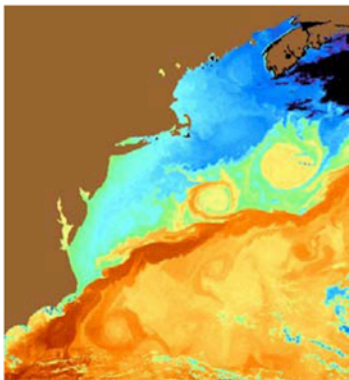
COASTWATCH



Satellites orbiting the Earth send data back to the National Oceanic and Atmospheric Administration (NOAA). This raw data is processed by NOAA/NESDIS and made available by NOAA's CoastWatch Program.

Our mission is to provide and ensure timely access to near real-time satellite data to protect, restore, and manage U.S. coastal ocean resources, and understand climate variability and change to further enhance society's quality of life. Our primary users include Federal, State, and local marine scientists, coastal resource managers, and the general public.

Today, educators from middle school through college use CoastWatch images to introduce students to the world as seen from space.



Technical Information for the Satellites and the Images

<u>Satellite</u>	<u>Orbit</u>	<u>Sensor</u>	<u>Resolution</u>	<u>Product</u>	<u>Images per Day**</u>
NOAA POES	Polar	AVHRR	1-4km	Sea Surface Temperature	4
NOAA GOES	Geostationary	Imager	6 km	Sea Surface Temperature	8
NASA Terra & Aqua	Polar	MODIS	1 km	Sea Surface Temperature Chlorophyll-a	4
OrbImage OrbView-2	Polar	SeaWiFS	1 km	Chlorophyll-a, Turbidity	10
NASA QuikScat	Polar	SeaWinds	25 km	Sea Surface Winds	2
DOD DMSP	Polar	SSM/I	50 km	Sea Surface Winds	6

**Over same geographic region

Which Satellite to Access

NOAA's CoastWatch Program makes data available from a variety of sensors and satellites. Deciding which satellite data to download depends on the type of information that is needed. The most commonly requested data are:

- Sea Surface Temperature
- Ocean Color
- Sea Surface Winds

Sea surface temperature images are used for locating fishing spots and forecasting weather. Ocean color images help scientists track physical and biological changes in the ocean. Sea surface wind images are primarily used by boaters and commercial ships. Each image is displayed in near real-time, which means the image is approximately 2 to 4 hours old.

