

5.0 FY05–FY10 PRODUCTION FORECAST

This section presents the FY05-FY10 production forecast, which uses the data compiled by FEMA’s Regional Offices. On a regular basis, FEMA will review and update data at the regional level and compile and evaluate it at the national level. Two semiannual updates will serve as the basis for reporting progress and forecasting.

5.1 Process Used to Develop FY05–FY10 Planned Activities

The process used to sequence the FY05-FY10 planned activities is iterative. To determine when to study a county and the amount of funds to allocate, FEMA does the following:

- Determines the allocation of the national budget available to each Region
- Obtains stakeholder input on local and state needs
- Evaluates and balances national requirements with local and state requirements and determines the amount of Federal funding for each study

The MHIP balances national risk management requirements with local community needs.

Section 3, Distribution of Funds, discusses FEMA’s approach to allocating the national budget to the Regions. Figure 5-1 shows the process for distributing funds to the Regions and developing the study sequencing for FY03, the modified process used for FY04/FY05, and the planned process for FY06 and beyond.

As described in Section 3, in FY03 FEMA based decisions on flood map update funding distribution to Regions on quantifiable criteria determined from stakeholder input. The distribution of FY03 flood mapping funds to Regions was based on rankings determined by analysis of quantifiable factors that focused on high risk, population, and growth areas. The number of projects funded at the Regional level depended on the ranking of risk values and the budgets for individual flood map update projects. This initial focus on highest risk areas demonstrated the importance of continued sustained funding for Flood Map Modernization

Based on feedback from stakeholders, in FY04 and FY05 FEMA improved the way we quantified growth by adding additional data from the Census, and included an element of “cost realism”. To recognize that there is a minimum cost for any study, FEMA leveled costs where risk was determined to be low. The Regions then used the business plans and other databases and information related to need and leverage to sequence all counties nationwide in the initial five-year plan (for FY04-FY08).

To develop the plans for FY06 and beyond, FEMA will develop reliable national datasets and information so that need and leverage can be used to establish regional budgets. This will help provide incentives to states and locals to identify potential resources that can be leveraged in the flood map update process, and more accurately quantify their needs.

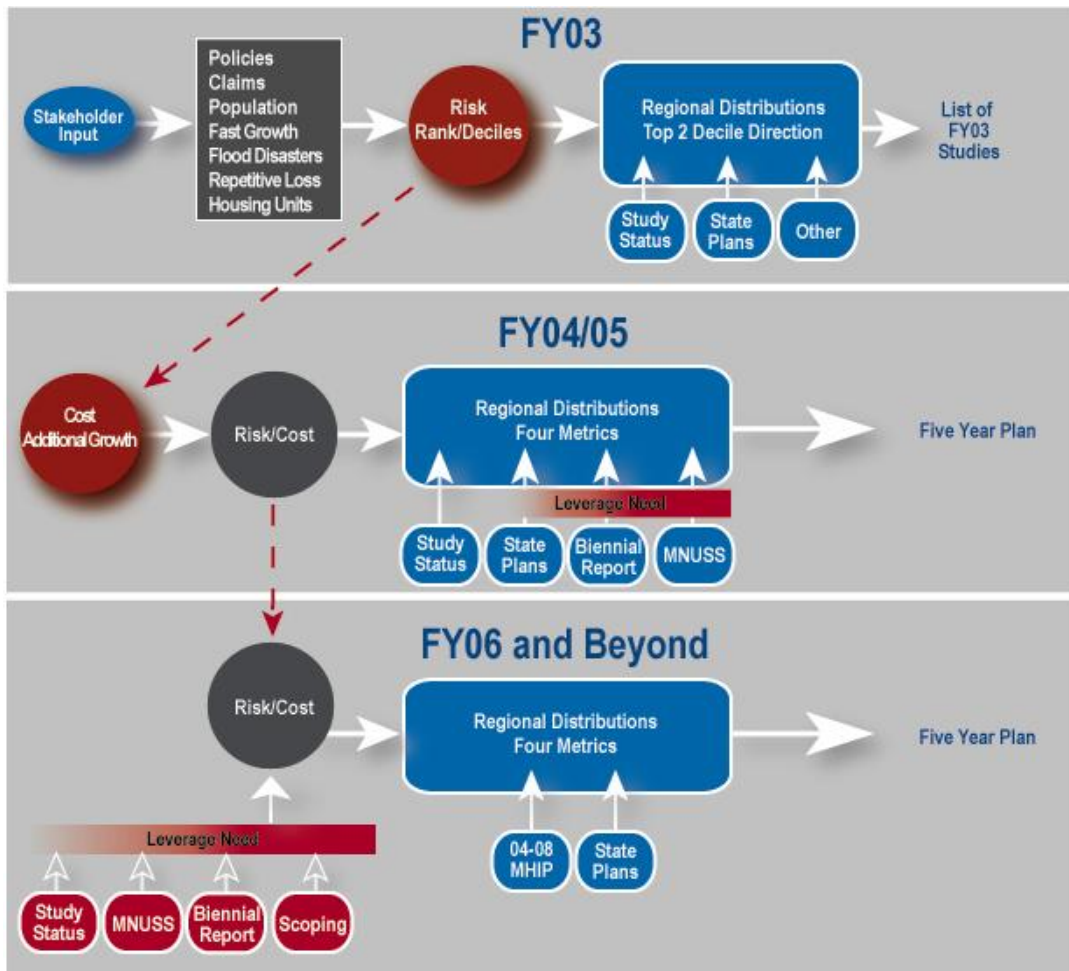


Figure 5-1. Funding Distribution Process

Appendix A provides a detailed listing by county for all map production activities scheduled to be initiated through FY08 and to be completed by FY10. The appendix lists which counties are scheduled for map production in which year, and the anticipated funding allotted by FEMA to the map update. This funding is only for the map production cost (scoping to effective maps).

The following subsections provide an analysis of the projected sequencing, starting with FY05, then looking forward to FY06-FY10. Section 6, Production Analysis, presents an analysis of FEMA’s progress in relation to FEMA’s key performance indicators for Map Modernization.

5.2 FY05 Planned Activities

Table 5-1 shows, by Region, the number of countywide studies projected to be funded, counties for which preliminary maps will be issued in FY05, and counties with maps to be adopted in FY05. Map 5-1 shows the nationwide projections for funding, preliminary issuance, and adoption through FY05.

FY05-FY10 Production Forecast

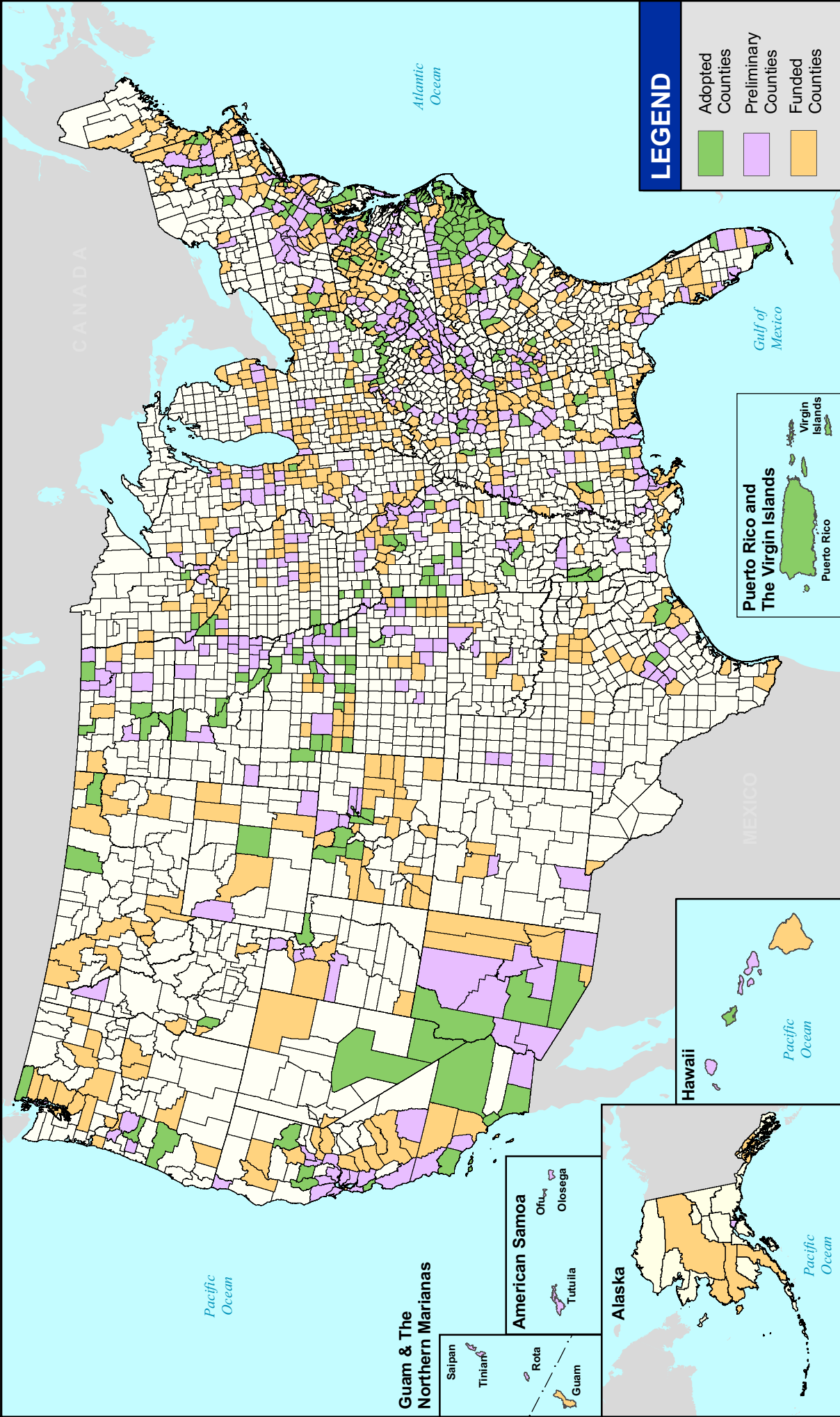
Table 5-1. Projected Mapping Activities by Region for FY05

Region	Counties Funded	Counties Preliminary	Counties Adopted
1	19	4	5
2	13	11	4
3	56	69	8
4	98	89	35
5	86	33	10
6	59	26	4
7	54	51	23
8	37	29	10
9	36	34	10
10	22	6	0
Total	480	352	109

Map 5-1. Progress of Mapping Activities Through FY05

Projected as of November 5, 2004

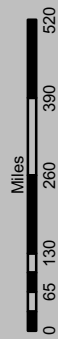
FEMA



LEGEND

- Adopted Counties
- Preliminary Counties
- Funded Counties

Projection: North America Albers Equal-Area Conic
Data Source: FEMA Sequencing Tool



MHIP

FY05-FY10 Production Forecast

5.3 FY06–FY10 Planned Activities

Tables 5-2 through 5-6 show the number of countywide studies projected to be funded, issued as preliminary, and adopted, by year and by Region, for FY06-FY10. Some counties preliminary or adopted were funded in previous years; therefore, the number of counties preliminary may be higher than number of counties funded during this time period, and the number of counties adopted may be higher than the number of counties preliminary and/or funded during this time period.

Table 5-2. Projected Mapping Activities by Region for FY06

Region	Counties Funded	Counties Preliminary	Counties Adopted
1	23	11	5
2	13	12	10
3	49	58	69
4	131	95	87
5	98	91	32
6	108	37	26
7	66	42	50
8	46	46	31
9	13	26	28
10	42	20	7
Total	589	438	345

Table 5-3. Projected Mapping Activities by Region for FY07

Region	Counties Funded	Counties Preliminary	Counties Adopted
1	29	13	11
2	19	12	12
3	46	49	58
4	157	130	97
5	133	96	91
6	171	96	39
7	89	66	42
8	59	44	46
9	10	14	27
10	74	40	12
Total	787	560	435

Table 5-4. Projected Mapping Activities by Region for FY08

Region	Counties Funded	Counties Preliminary	Counties Adopted
1	27	12	14
2	27	19	12
3	27	46	49
4	180	161	131
5	162	132	96
6	190	145	94
7	127	89	66
8	99	55	41
9	13	15	13
10	78	34	45
Total	930	708	561

Table 5-5. Projected Mapping Activities by Region for FY09

Region	Counties Preliminary	Counties Adopted
1	21	15
2	27	19
3	27	46
4	167	160
5	161	132
6	191	145
7	127	89
8	82	57
9	0	15
10	29	34
Total	832	712

Table 5-6. Projected Mapping Activities by Region for FY10

Region	Counties Preliminary	Counties Adopted
1	0	17
2	0	27
3	0	27
4	24	191
5	0	161
6	0	191
7	0	127
8	12	95
9	0	0
10	13	44
Total	49	880

Maps 5-2 and 5-3 present the counties preliminary and counties effective, respectively, by fiscal year for FY06-FY10. Maps 5-4 through 5-8 also present nationwide progress (counties adopted, preliminary, and funded) by fiscal year for FY06-FY10. In addition, appendix B presents a series of maps that show counties planned for funding by fiscal year (maps 5.3-1 to 5.3-6), maps to be delivered to the communities as preliminary (maps 5.3-7 to 5.3-14), and maps to be adopted by the communities (maps 5.3-15 to 5.3-22).