

Instructions for Accessing ftp Server "atlas"

In the following instructions, what you actually type at your terminal is shown in **boldface** type [with an explanation shown in square brackets]. What the server responds with is shown indented in *italic type*.

ftp atlas.lanl.gov

Name (atlas.lanl.gov):

anonymous

Guest login ok, send ident as password.

Password:

[enter your e-mail address as ident]

Guest login ok. access restrictions apply.

cd pub [change to the directory called pub]

CWD command successful

cd papilloma

ls [this lists the files and directories inside of papilloma]

SWISS-PROT-files, RoadMap, Alignments, ReadMe, EMBL-files, GenBank-files

pwd [to show your location in the file hierarchy]

"/pub/papilloma" is current directory.

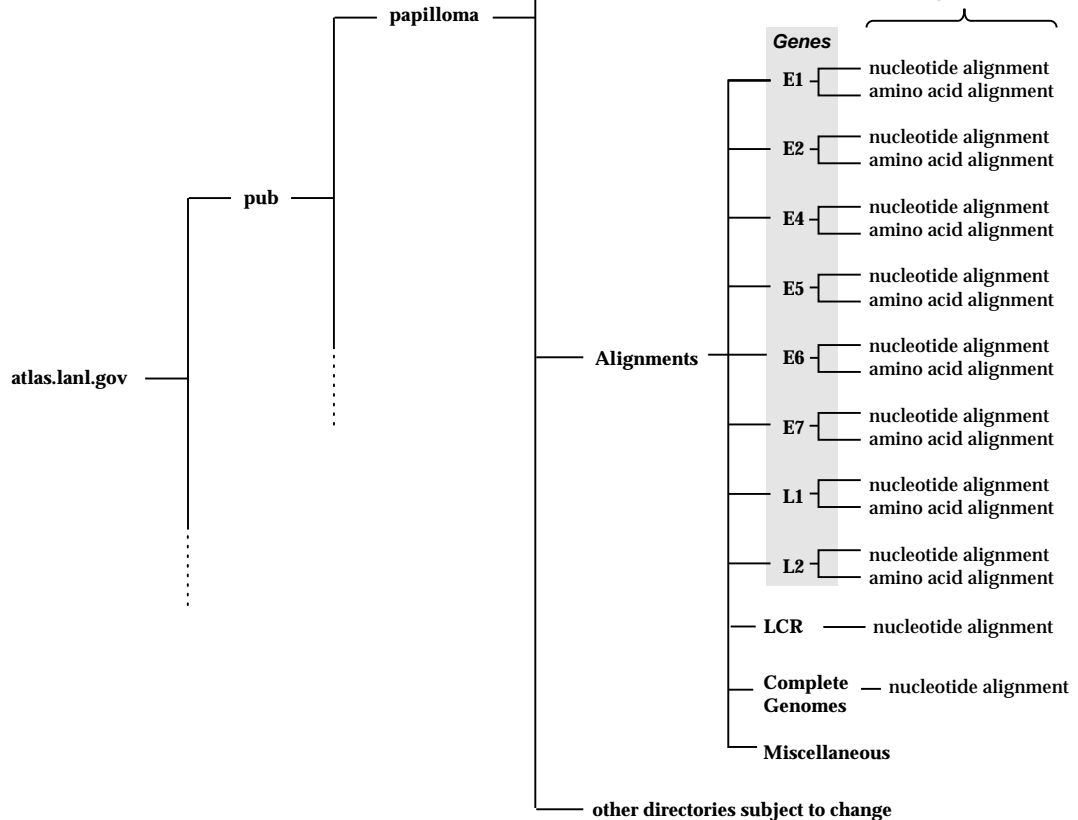
cd GenBank-files/Human-papilloma [move down 2 directories]

ls

[all the GenBank files are listed]

get HPV47.gb [this copies the file HPV47.gb to your home computer]

bye [this disconnects you from the server]



MARCH 1996* MAP OF HPV DATABASE ON "ATLAS"

* Data subject to continuous revision