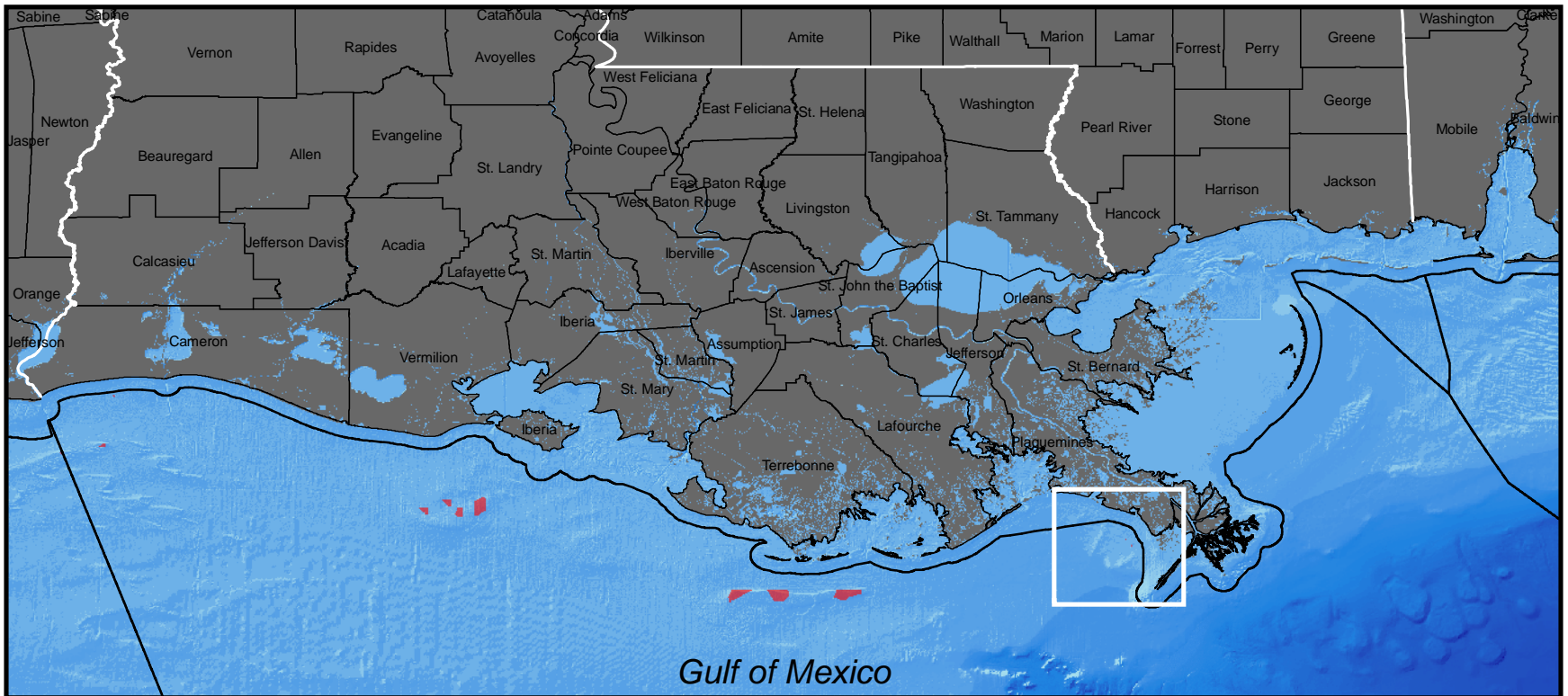




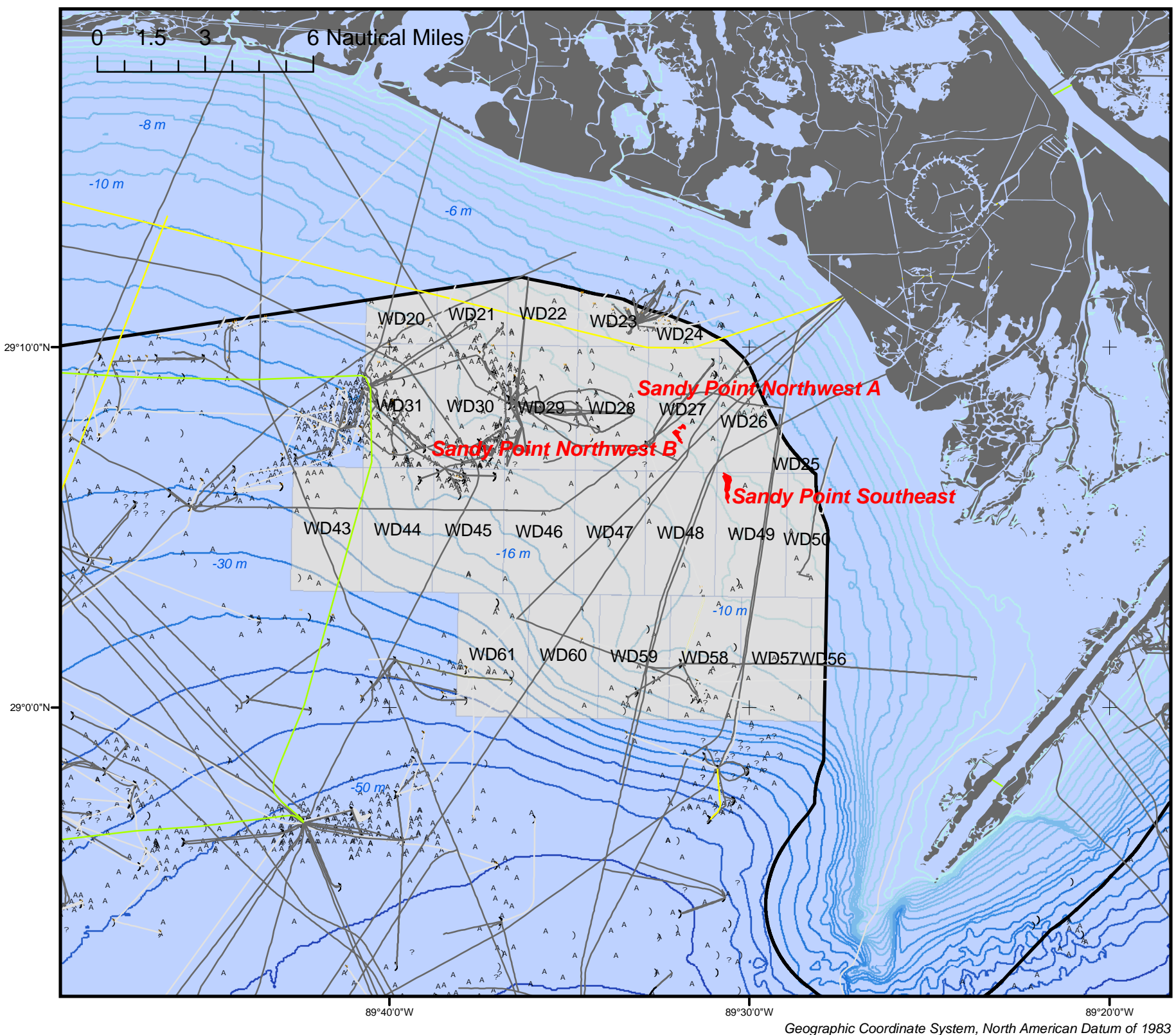
Gulf of Mexico Region  
Significant Outer Continental Shelf Sediment Resources

1:3,000,000



West Delta Area (Sandy Point Channels)

1:250,000



Legend	
	Significant OCS Sediment Resources
	ITL Sand and Gravel Blocks
	Submarine Cables
	Umbilicals
	Active Pipelines
	Proposed Pipelines
	Abandoned Pipelines
	Active and Proposed Platforms
	Destroyed Platforms
	Removed Platforms
	Well Tops
	Perm. Abandoned Wells
	Temp. Abandoned Wells

The Notice to Lessees and Operators (NTL) concerning Significant Outer Continental Shelf (OCS) Sediment Resources in the Gulf of Mexico recommends avoidance of significant OCS sediment resources to the maximum extent practicable during operations involving structures, drilling rigs, pipelines, umbilicals, and/or cables. Gulf of Mexico Region NTLs are available on the internet at [www.gomr.mms.gov](http://www.gomr.mms.gov). MMS does not warrant the accuracy of this map or assume any responsibility or liability for any reliance thereon. This map is not intended for navigational purposes or as a legal document for leasing purposes.

Last updated 10/9/2008