

Jan Lievens: A Dutch Master Rediscovered

October 26, 2008 - January 11, 2009

Important: The images displayed on this page are for reference only and are not to be reproduced in any media. To obtain images and permissions for print or digital reproduction please provide your name, press affiliation and all other information as required(*) utilizing the order form at the end of this page.

Digital images will be sent via e-mail.

Please include a brief description of the kind of press coverage planned and your phone number so that we may contact you.

Usage: Images are provided exclusively to the press, and only for purposes of publicity for the duration of the exhibition at the National Gallery of Art. All published images must be accompanied by the credit line provided and with copyright information, as noted.

:

Cat. No. 1 | File Name: 255-006.jpg
Jan Lievens (Dutch, 1607 - 1674)
Old Woman Reading, c. 1621 -1623
oil on panel, 68.7 x 64.6 cm (27 1/16 x 25 7/16 in.)
Philadelphia Museum of Art: John G. Johnson Collection, 1917



Cat. No. 2 | File Name: 255-001.jpg
Jan Lievens (Dutch, 1607 - 1674)
Allegory of the Five Senses, c. 1622
oil on panel, 78.2 x 124.4 cm (30 13/16 x 49 in.)
Private collection



Cat. No. 3 | File Name: 255-071.jpg
Jan Lievens (Dutch, 1607 - 1674)
The Cardplayers, c. 1623-1624
oil on canvas, 97.6 x 105.6 cm (38 7/16 x 41 9/16 in.)
Private collection



Cat. No. 4 | File Name: 255-017.jpg
Jan Lievens (Dutch, 1607 - 1674)
Saint Paul, c. 1624-1625
oil on panel, 94 x 78.7 cm (37 x 31 in.)
Agnes Etherington Art Centre, Kingston, Gift of Alfred and Isabel Bader, 2006



Cat. No. 5 | File Name: 255-068.jpg
Jan Lievens (Dutch, 1607 - 1674)
Saint Peter Released from Prison, c. 1624-1625
oil on canvas, 95 x 102 cm (37 3/8 x 40 3/16 in.)
Private collection, Israel



Cat. No. 6 | File Name: 255-003.jpg
Jan Lievens (Dutch, 1607 - 1674)
The Feast of Esther, c. 1625
oil on canvas, 134.6 x 165.1 cm (53 x 65 in.)
North Carolina Museum of Art, Raleigh, Purchased with Funds from the State of North Carolina



Cat. No. 7
Jan Lievens (Dutch, 1607 - 1674)
Pilate Washing His Hands, c. 1625-1625
oil on panel, 83.8 x 105 cm (33 x 41 5/16 in.)
Loan Stedelijk Museum De Lakenhal, Leiden, The Netherlands

Cat. No. 8
Jan Lievens (Dutch, 1607 - 1674)
Christ at the Column, c. 1625-1626
oil on panel, 106.6 x 74.5 cm (41 15/16 x 29 5/16 in.)
Kremer Collection

Cat. No. 9 | File Name: 255-007.jpg
Jan Lievens (Dutch, 1607 - 1674)
The Evangelist Matthew (from the series "The Four Evangelists"), c. 1626-1627
oil on panel, 91 x 78 cm (35 13/16 x 30 11/16 in.)
Museen der Stadt Bamberg, Historisches Museum Bamberg



Cat. No. 10 | File Name: 255-010.jpg
Jan Lievens (Dutch, 1607 - 1674)
The Evangelist John (from the series "The Four Evangelists"), c. 1626-1627
oil on panel, 91 x 78 cm (35 13/16 x 30 11/16 in.)
Museen der Stadt Bamberg, Historisches Museum Bamberg



Cat. No. 11 | File Name: 255-021.jpg
Jan Lievens (Dutch, 1607 - 1674)
Still Life with Books, c. 1627-1628
oil on panel, 90.3 x 119.3 cm (35 9/16 x 46 15/16 in.)
Rijksmuseum, Amsterdam



Cat. No. 12 | File Name: 255-002.jpg
Jan Lievens (Dutch, 1607 - 1674)
Youth Embracing a Young Woman, c. 1627-1628
oil on canvas, 97 x 84 cm (38 3/16 x 33 1/16 in.)
Private collection



Cat. No. 13 | File Name: 255-029.jpg
Jan Lievens (Dutch, 1607 - 1674)
Lute Player, c. 1627, revised c. 1628
oil on panel, 92.7 x 78.4 cm (36 1/2 x 30 7/8)
The Walters Art Museum, Baltimore, Maryland, Gift of the Dr. Francis D. Murnaghan Fund, 1973



Cat. No. 14 | File Name: 255-025.jpg
Jan Lievens (Dutch, 1607 - 1674)
Young Man in a Beret, c. 1628
oil on panel, 83.5 x 49 cm (32 7/8 x 19 5/16 in.)
Private Collection, courtesy of Jean-Luc Baroni Ltd.



Cat. No. 15 | File Name: 255-027.jpg
Jan Lievens (Dutch, 1607 - 1674)
Samson and Delilah, c. 1628
oil on canvas, 129 x 110 cm (50 13/16 x 43 5/16 in.)
Rijksmuseum, Amsterdam



Cat. No. 16 | File Name: 255-020.jpg
Jan Lievens (Dutch, 1607 - 1674)
Portrait of Constantijn Huygens, 1628-1629
oil on panel, 99 x 84 cm (39 x 33 1/16 in.)
Rijksmuseum, Amsterdam, on loan from the Musée de la Chartreuse, Douai



Cat. No. 17 | File Name: 255-024.jpg
Jan Lievens (Dutch, 1607 - 1674)
Portrait of Rembrandt, c. 1629
oil on panel, 57 x 44 cm (22 7/16 x 17 5/16 in.)
Rijksmuseum, Amsterdam, on loan from a private collection



Cat. No. 18 | File Name: 255-070.jpg
Jan Lievens (Dutch, 1607 - 1674)
Self-Portrait, c. 1629-1630
oil on panel, 42 x 33 cm (16 9/16 x 13 in.)
Private collection



Cat. No. 19 | File Name: 255-022.jpg
Jan Lievens (Dutch, 1607 - 1674)
***Man in Oriental Costume ("Sultan Soliman")*, c. 1629-1631**
oil on canvas, 135 x 100.5 cm (53 1/8 x 39 9/16 in.)
Stiftung Preußische Schlösser und Gärten Berlin-Brandenburg



Cat. No. 20 | File Name: 255-028.jpg
Jan Lievens (Dutch, 1607 - 1674)
***Bearded Man with a Beret*, c. 1630**
oil on panel, 53.5 x 46.3 cm (21 1/16 x 18 1/4 in.)
National Gallery of Art, Washington, Gift (Partial and Promised) of the Kaufman Americana Foundation in honor of George M. and Linda H. Kaufman



Cat. No. 21 | File Name: 255-016.jpg
Jan Lievens (Dutch, 1607 - 1674)
***Profile Head of an Old Woman ["Rembrandt's Mother"]*, c. 1630**
oil on panel, 43.2 x 33.7 cm (17 x 13 1/4 in.)
Agnes Etherington Art Centre, Kingston, Gift of Alfred and Isabel Bader, 2005



Cat. No. 22 | File Name: 255-191.jpg
Jan Lievens (Dutch, 1607 - 1674)
***Old Man Holding a Skull*, c. 1630**
oil on panel, 61.6 x 48.3 cm (24 1/4 x 19 in.)
Johnny Van Haeften Ltd., London



Cat. No. 23
Jan Lievens (Dutch, 1607 - 1674)
***Saint Jerome Meditating in a Grotto*, c. 1630**
oil on paper on panel, 31.3 x 27.5 cm (12 5/16 x 10 13/16 in.)
Loan Stedelijk Museum De Lakenhal, Leiden, The Netherlands

Cat. No. 24 | File Name: 255-152.jpg
Jan Lievens (Dutch, 1607 - 1674)
***The Penitent Magdalene*, c. 1631**
oil on canvas, 63.5 x 49.5 cm (25 x 19 1/2 in.)
Agnes Etherington Art Centre, Kingston, Gift of Dr. and Mrs. Alfred Bader, 1975



Cat. No. 25
Jan Lievens (Dutch, 1607 - 1674)
***Job in his Misery*, 1631**
oil on canvas, 171.5 x 148.6 cm (67 1/2 x 58 1/2 in.)
National Gallery of Canada, Ottawa. Gift of the National Art Collections Fund of Great Britain, 1933

Cat. No. 26
Jan Lievens (Dutch, 1607 - 1674)
Preciosa and Doña Clara ("The Soothsayer"), c. 1631
oil on canvas, 161.2 x 142.3 cm (63 7/16 x 56 in.)
Staatliche Museen zu Berlin, Gemäldegalerie

Cat. No. 27 | File Name: 255-037.jpg
Jan Lievens (Dutch, 1607 - 1674)
Bathsheba Receiving King David's Letter, c. 1631
oil on canvas, 135 x 107 cm (53 1/8 x 42 1/8 in.)
The Cooney Collection, Studio City, CA



Cat. No. 28 | File Name: 255-066.jpg
Jan Lievens (Dutch, 1607 - 1674)
Young Girl in Profile, c. 1631
oil on panel, 45 x 38.3 cm (17 11/16 x 15 1/16 in.)
Eijk and Rose-Marie Van Otterloo Collection



Cat. No. 29 | File Name: 255-030.jpg
Jan Lievens (Dutch, 1607 - 1674)
Prince Charles Louis with His Tutor, as the Young Alexander Instructed by Aristotle, 1631
oil on canvas, 103.5 x 96.5 cm (40 3/4 x 38 in.)
The J. Paul Getty Museum, Los Angeles



Cat. No. 30 | File Name: 255-031.jpg
Jan Lievens (Dutch, 1607 - 1674)
Boy in a Cape and Turban, c. 1631
oil on panel, 67 x 51.8 cm (26 3/8 x 20 3/8 in.)
Private collection

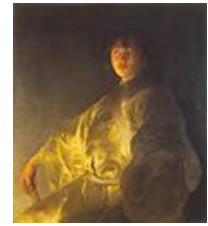


Cat. No. 31 | File Name: 255-033.jpg
Jan Lievens (Dutch, 1607 - 1674)
The Raising of Lazarus, 1631
oil on canvas, 107 x 114 cm (42 1/8 x 44 7/8 in.)
Royal Pavilion and Museums, Brighton & Hove



Cat. No. 32
Jan Lievens (Dutch, 1607 - 1674)
Christ on the Cross, 1631
oil on canvas, 129 x 84 cm (50 13/16 x 33 1/16 in.)
Musée des Beaux-Arts, Nancy

Cat. No. 33 | File Name: 255-038.jpg
Jan Lievens (Dutch, 1607 - 1674)
***Young Man in Yellow (Self-Portrait?)*, c. 1631-1632**
oil on canvas, 112 x 99.4 cm (44 1/8 x 39 1/8)
National Gallery of Scotland, Edinburgh



Cat. No. 34
Jan Lievens (Dutch, 1607 - 1674)
***Self-Portrait*, c. 1635**
oil on panel, 50.5 x 41.4 cm (19 7/8 x 16 5/16 in.)
Statens Museum for Kunst, Copenhagen

Cat. No. 35 | File Name: 255-040.jpg
Jan Lievens (Dutch, 1607 - 1674)
***A Greedy Couple Surprised by Death*, 1638**
oil on panel, 60 x 79 cm (23 5/8 x 31 1/8 in.)
Private collection



Cat. No. 36 | File Name: 255-074.jpg
Jan Lievens (Dutch, 1607 - 1674)
***Fighting Cardplayers and Death*, c. 1638**
oil on canvas on panel, 67 x 85 cm (26 3/8 x 33 7/16 in.)
Private collection



Cat. No. 37
Jan Lievens with David Teniers the Younger (Flemish, 1610 - 1690, Dutch, 1607 - 1674)
***Landscape with Peasants*, c. 1638**
oil on canvas (transferred from panel), 74 x 154 cm (29 1/8 x 60 5/8 in.)
Kremer Collection

Cat. No. 38 | File Name: 255-051.jpg
Jan Lievens (Dutch, 1607 - 1674)
***Head of an Old Man*, 1640**
oil on canvas, 76.2 x 62.5 cm (30 x 24 5/8 in.)
New Orleans Museum of Art, Gift of Mr. and Mrs. Henry H. Weldon



Cat. No. 39 | File Name: 255-060.jpg
Jan Lievens (Dutch, 1607 - 1674)
***The Lamentation of Christ (modello)*, c. 1640**
oil on panel, 39 x 54 cm (15 3/8 x 21 1/4 in.)
Charles Roelofsz, Amsterdam



Cat. No. 40
Jan Lievens (Dutch, 1607 - 1674)
***The Lamentation of Christ*, c. 1640**
oil on canvas, 141 x 216 cm (55 1/2 x 85 1/16 in.)
Bayerisches Staatsgemäldesammlungen, Munich, Alte Pinakothek

Cat. No. 41 | File Name: 255-190.jpg
Jan Lievens (Dutch, 1607 - 1674)
The Sacrifice of Isaac, c. 1640-1643
oil on canvas, 234.4 x 174.3 cm (92 5/16 x 68 5/8 in.)
Collection Joseph and Lieve Guttmann U.S.A.



Cat. No. 42 | File Name: 255-046.jpg
Jan Lievens (Dutch, 1607 - 1674)
Landscape with Willows, early 1640s
oil on panel, 28 x 41 cm (11 x 16 1/8 in.)
Frits Lugt Collection, Institut Néerlandais, Paris



Cat. No. 43
Jan Lievens (Dutch, 1607 - 1674)
Dune Landscape with Trees, middle to late 1640s
oil on panel, 41.5 x 35.5 cm (16 5/16 x 14 in.)
Museum Boijmans Van Beuningen, Rotterdam

Cat. No. 44 | File Name: 255-054.jpg
Jan Lievens (Dutch, 1607 - 1674)
Portrait of Adriaen Trip, 1644
oil on canvas, 107.5 x 83.5 cm (42 5/16 x 32 7/8 in.)
The Rembrandt House Museum, Amsterdam, on loan from a private collection



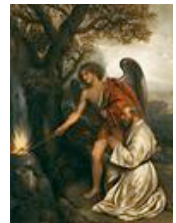
Cat. No. 45 | File Name: 255-073.jpg
Jan Lievens (Dutch, 1607 - 1674)
Portrait of Anna Maria van Schurman, 1649
oil on canvas, 87 x 68.6 cm (34 1/4 x 27 in.)
The National Gallery, London. Presented by the Trustees of the British Museum, 1880



Cat. No. 46 | File Name: 255-194.jpg
Jan Lievens (Dutch, 1607 - 1674)
Jacob Receiving Joseph's Bloody Coat, probably mid-1640s
oil on canvas, 55 x 73 cm (21 5/8 x 28 3/4 in.)
Collection Joseph and Lieve Guttmann U.S.A.



Cat. No. 47 | File Name: 255-188.jpg
Jan Lievens (Dutch, 1607 - 1674)
Gideon's Sacrifice, early 1650s
oil on canvas, 128 x 94 cm (50 3/8 x 37 in.)
Private collection



Cat. No. 48 | File Name: 255-055.jpg
Jan Lievens (Dutch, 1607 - 1674)
Self-Portrait, early 1650s
oil on canvas, 96.2 x 77 cm (37 7/8 x 30 5/16 in.)
The National Gallery, London. Presented by Charles Fairfax Murray, 1912



Cat. No. 49 | File Name: 255-057.jpg
Jan Lievens (Dutch, 1607 - 1674)
Triumph of Peace, 1652
oil on canvas, 220 x 204 cm (86 5/8 x 80 5/16 in.)
Rijksmuseum, Amsterdam



Cat. No. 51 | File Name: 255-059.jpg
Jan Lievens (Dutch, 1607 - 1674)
Sir Robert Kerr, First Earl of Ancrum, 1654
oil on canvas, 62.2 x 51.4 cm (24 1/2 x 20 1/4 in.)
Private collection, on long term loan to the Scottish National Portrait Gallery



Cat. No. 52 | File Name: 255-061.jpg
Jan Lievens (Dutch, 1607 - 1674)
Christ and the Centurion, 1657
oil on canvas, 86 x 69 x 2 cm (33 7/8 x 27 3/16 x 13/16 in.)
Private collection, Europe, Courtesy of Hoogsteder & Hoogsteder, The Hague, The Netherlands



Cat. No. 53 | File Name: 255-056.jpg
Jan Lievens (Dutch, 1607 - 1674)
Portrait of Jacob Junius, c. 1658
oil on canvas, 79 x 53 cm (31 1/8 x 20 7/8 in.)
Alfred and Isabel Bader



Cat. No. 54
Jan Lievens (Dutch, 1607 - 1674)
Brinio Raised on a Shield, 1660
oil on paper on canvas, 60 x 59 cm (23 5/8 x 23 1/4 in.)
Amsterdams Historisch Museum

Cat. No. 55
Jan Lievens and Jan Andrea Lievens (Dutch, 20 Jan 1644 - 30 Jan 1680, Dutch, 1607 - 1674)
The Geographer, c. 1665
oil on canvas, 132 x 169 cm (51 15/16 x 66 9/16 in.)
Loan Hoogheemraadschap van Rijnland (water board), Leiden, The Netherlands

Cat. No. 56 | File Name: 255-096.jpg
Jan Lievens (Dutch, 1607 - 1674)
Saint John the Evangelist on Patmos (second state of four), c. 1625-1626
etching on paper, 15.6 x 14.1 cm (6 1/8 x 5 9/16 in.)
The Rembrandt House Museum, Amsterdam



Cat. No. 57 | File Name: 255-075.jpg
Jan Lievens (Dutch, 1607 - 1674)
Jacob Anointing the Stone (second state of two), 1625-1626
etching on paper, 19.7 x 16 cm (7 3/4 x 6 5/16 in.)
Rijksmuseum, Amsterdam



Cat. No. 58 | File Name: 255-097.jpg
Jan Lievens (Dutch, 1607 - 1674)
Mercury Lulls Argus to Sleep with his Pipe (third state of three), c. 1625-1626
etching and engraving on paper, 19.4 x 16.5 cm (7 5/8 x 6 1/2 in.)
Frits Lugt Collection, Institut Néerlandais, Paris



Cat. No. 59
Jan Lievens (Dutch, 1607 - 1674)
Young Girl with Long Hair (second state of two), c. 1628-1631
etching on paper, 16.2 x 14.3 cm (6 3/8 x 5 5/8 in.)
Städel Museum, Frankfurt am Main

Cat. No. 61
Jan Lievens (Dutch, 1607 - 1674)
Profile Head of an Old Woman, Facing Left (second state of two), c. 1628-1631
etching on paper, 14.6 x 12.2 cm (5 3/4 x 4 13/16 in.)
Staatliche Museen zu Berlin, Kupferstichkabinett

Cat. No. 62 | File Name: 255-087.jpg
Jan Lievens (Dutch, 1607 - 1674)
Young Man in a Fur Cap (first state of four), c. 1630
etching on paper, 7.5 x 5.9 cm (2 15/16 x 2 5/16 in.)
Rijksmuseum, Amsterdam



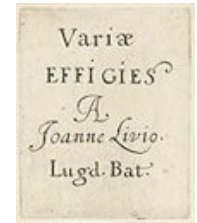
Cat. No. 62 | File Name: 255-088.jpg
Jan Lievens (Dutch, 1607 - 1674)
Young Man in a Fur Cap (third state of four), c. 1630
etching on paper, 7.5 x 5.9 cm (2 15/16 x 2 5/16 in.)
Rijksmuseum, Amsterdam



Cat. No. 62 | File Name: 255-089.jpg
Jan Lievens (Dutch, 1607 - 1674)
Young Man in a Fur Cap (fourth state of four), c. 1630
etching on paper, 7.5 x 5.9 cm (2 15/16 x 2 5/16 in.)
Rijksmuseum, Amsterdam



Cat. No. 62 | File Name: 255-090.jpg
Jan Lievens (Dutch, 1607 - 1674)
Series Variæ Effigies, Title Page, c. 1630
etching on paper, 7.6 x 6.1 cm (3 x 2 3/8 in.)
Rijksmuseum, Amsterdam



Cat. No. 63
Jan Lievens (Dutch, 1607 - 1674)
Diverse Troniken, Title page, c. 1628-1635
etching and engraving on paper, framed (4 other works): 57.5 x 43.5 cm (22 5/8 x 17 1/8 in.)
Staatliche Museen zu Berlin, Kupferstichkabinett

Cat. No. 63
Jan Lievens (Dutch, 1607 - 1674)
Young Gentleman, Facing Right (Diverse Troniken) (second state of three), c. 1628-1635
etching and engraving on paper, 7.5 x 6.1 cm (3 x 2 3/8 in.)
Staatliche Museen zu Berlin, Kupferstichkabinett

Cat. No. 64
Jan Lievens (Dutch, 1607 - 1674)
Man in a Cap ("The Cook") (Diverse Troniken) (second state of two), c. 1628-1635
etching and engraving on paper, 7.7 x 6.1 cm (3 x 2 3/8 in.)
Staatliche Museen zu Berlin, Kupferstichkabinett

Cat. No. 65
Jan Lievens (Dutch, 1607 - 1674)
Young Woman in a Headdress, in Profile to Left (Diverse Troniken) (second state of three), c. 1628-1635
etching and engraving on paper, 7.7 x 6.1 cm (3 x 2 3/8 in.)
Staatliche Museen zu Berlin, Kupferstichkabinett

Cat. No. 66
Jan Lievens (Dutch, 1607 - 1674)
Moorish Woman Facing Left (Diverse Troniken) (first state of three), c. 1628-1635
etching and engraving on paper, 7.3 x 6.1 cm (2 7/8 x 2 3/8 in.)
Staatliche Museen zu Berlin, Kupferstichkabinett

Cat. No. 67
Jan Lievens (Dutch, 1607 - 1674)
Young Man in Profile to Right (first state of five), c. 1630-1631
etching on paper, 15.7 x 14.2 cm (6 3/16 x 5 9/16 in.)
Rijksmuseum, Amsterdam

Cat. No. 68 | File Name: 255-084.jpg
Jan Lievens (Dutch, 1607 - 1674)
Bearded Man in a Turban, in Profile to Left (fourth state of five), c. 1630-1631
etching on paper, 16 x 14.3 cm (6 5/16 x 5 5/8 in.)
Rijksmuseum, Amsterdam



Cat. No. 69 | File Name: 255-160.jpg
Jan Lievens (Dutch, 1607 - 1674)
Bearded Man Facing Left (first state of five), c. 1630-1631
etching on paper, 16.2 x 14.4 cm (6 3/8 x 5 11/16 in.)
Collection of Tom Rassieur



Cat. No. 70 | File Name: 255-085.jpg
Jan Lievens (Dutch, 1607 - 1674)
Old Man Facing Forward (first state of three), 1630-1631
etching on paper, 16.4 x 14.4 cm (6 1/2 x 5 11/16 in.)
Rijksmuseum, Amsterdam



Cat. No. 71 | File Name: 255-079.jpg
Jan Lievens (Dutch, 1607 - 1674)
Seated Hermit (fifth state of eight), c. 1630
etching and engraving on paper, 23.9 x 18 cm (9 7/16 x 7 1/16 in.)
Rijksmuseum, Amsterdam



Cat. No. 71 | File Name: 255-123.jpg
Jan Lievens (Dutch, 1607 - 1674)
Seated Hermit (first state of eight), c. 1630
etching and engraving on paper, 23.9 x 18 cm (9 7/16 x 7 1/16 in.)
The British Museum, London



Cat. No. 72
Jan Lievens (Dutch, 1607 - 1674)
Saint Jerome Meditating in a Grotto (third state of five), c. 1630
etching, engraving, and drypoint on paper, 24 x 21 cm (9 7/16 x 8 1/4 in.)
Städel Museum, Frankfurt am Main

Cat. No. 72 | File Name: 255-156.jpg
Jan Lievens (Dutch, 1607 - 1674)
Saint Jerome Meditating in a Grotto (first state of five), c. 1630
etching, engraving, and drypoint on paper, sheet: 32.3 x 27.1 cm (12 11/16 x 10 11/16 in.)
Museum of Fine Arts, Boston, Katherine E. Bullard Fund in memory of Francis Bullard



Cat. No. 73 | File Name: 255-076.jpg
Jan Lievens (Dutch, 1607 - 1674)
The Raising of Lazarus (first state of three), 1630-1631
etching and engraving on paper, 35.6 x 31.2 cm (14 x 12 5/16 in.)
Rijksmuseum, Amsterdam



Cat. No. 73 | File Name: 255-077.jpg
Jan Lievens (Dutch, 1607 - 1674)
The Raising of Lazarus (third state of three), 1630-1631
etching and engraving on paper, 35.7 x 31.3 cm (14 1/16 x 12 5/16 in.)
Rijksmuseum, Amsterdam



Cat. No. 74 | File Name: 255-082.jpg
Jan Lievens (Dutch, 1607 - 1674)
Portrait of an Elderly Man (second state of two), c. 1632-1635
etching, engraving, and drypoint on paper, 24.1 x 21.6 cm (9 1/2 x 8 1/2 in.)
Rijksmuseum, Amsterdam



Cat. No. 75 | File Name: 255-157.jpg
Jan Lievens (Dutch, 1607 - 1674)
Portrait of Jacques Gaultier (third state of five), 1632-1635
etching, engraving, and drypoint on paper, sheet: 26.3 x 20.2 cm (10 3/8 x 7 15/16 in.)
Museum of Fine Arts, Boston, Bequest of Washington Irving Jenkins



Cat. No. 76
Jan Lievens (Dutch, 1607 - 1674)
Virgin and Child with a Pear (third state of six), c. 1635-1638
etching, engraving, and drypoint on paper, 24 x 19.6 cm (9 7/16 x 7 11/16 in.)
Museum Boijmans Van Beuningen, Rotterdam

Cat. No. 77
Jan Lievens (Dutch, 1607 - 1674)
Bust of a Capuchin Monk, c. 1635-1638
etching on paper, 32 x 24.7 cm (12 5/8 x 9 3/4)
Staatliche Museen zu Berlin, Kupferstichkabinett

Cat. No. 78
Jan Lievens (Dutch, 1607 - 1674)
Fighting Cardplayers and Death (second state of three), c. 1638
etching on paper, 20.4 x 26.8 cm (8 1/16 x 10 9/16 in.)
Staatliche Museen zu Berlin, Kupferstichkabinett

Cat. No. 79 | File Name: 255-080.jpg
Jan Lievens (Dutch, 1607 - 1674)
Portrait of Daniel Heinsius (third state of four), 1639-1640
etching and engraving on paper, 26.3 x 20.3 cm (10 3/8 x 8 in.)
Rijksmuseum, Amsterdam



Cat. No. 80 | File Name: 255-092.jpg
Jan Lievens (Dutch, 1607 - 1674)
Landscape with a Group of Trees, c. 1640
woodcut, 24 x 15 cm (9 1/2 x 5 7/8 in.)
Rijksmuseum, Amsterdam



Cat. No. 81 | File Name: 255-091.jpg
Jan Lievens (Dutch, 1607 - 1674)
Cain Slaying Abel, c. 1640-1644
woodcut, 41.5 x 31.7 cm (16 5/16 x 12 1/2 in.)
Rijksmuseum, Amsterdam



Cat. No. 82 | File Name: 255-158.jpg
Jan Lievens (Dutch, 1607 - 1674)
Man in a Cap, Facing Left, c. 1640-1644
woodcut, sheet (trimmed): 16.7 x 12.8 cm (6 9/16 x 5 1/16 in.)
Museum of Fine Arts, Boston, Gift of W.G. Russell Allen



Cat. No. 83 | File Name: 255-101.jpg
Jan Lievens (Dutch, 1607 - 1674)
A Seated Cleric (first state of two), c. 1640-1644
woodcut, 17 x 13.6 cm (6 11/16 x 5 3/8 in.)
Frits Lugt Collection, Institut Néerlandais, Paris



Cat. No. 84 | File Name: 255-159.jpg
Jan Lievens (Dutch, 1607 - 1674)
Bust of a Man Facing Forward, c. 1640-1644
chiaroscuro woodcut, sheet: 17.2 x 13 cm (6 3/4 x 5 1/8 in.)
Museum of Fine Arts, Boston, Bequest of W.G. Russell Allen



Cat. No. 85 | File Name: 255-098.jpg
Jan Lievens (Dutch, 1607 - 1674)
Portrait of Joost van den Vondel (fifth state of seven), 1644-1650
etching and engraving on paper with chalk, 32.2 x 24.6 cm (12 11/16 x 9 11/16 in.)
Frits Lugt Collection, Institut Néerlandais, Paris



Cat. No. 85 | File Name: 255-124.jpg
Jan Lievens (Dutch, 1607 - 1674)
Portrait of Joost van den Vondel (second state of seven), 1644-1650
etching and engraving on paper, 32.2 x 24.6 cm (12 11/16 x 9 11/16 in.)
The British Museum, London



Cat. No. 86 | File Name: 255-081.jpg
Jan Lievens (Dutch, 1607 - 1674)
Portrait of Caspar Streso (first state of three), 1654-1655
etching and engraving touched with black chalk on paper, 26.8 x 23.5 cm (10 9/16 x 9 1/4 in.)
Rijksmuseum, Amsterdam



Cat. No. 87 | File Name: 255-189.jpg
Jan Lievens (Dutch, 1607 - 1674)
Portrait of Ephraim Bueno (fifth state of eight], c. 1656
etching and engraving on paper, sheet (cut within platemark): 34 x 26.2 cm (13 3/8 x 10 5/16 in.)
National Gallery of Art, Washington, Ailsa Mellon Bruce Fund



Cat. No. 88 | File Name: 255-129.jpg
Jan Lievens (Dutch, 1607 - 1674)
The Stoning of Saint Paul at Lystra, c. 1621-1623
pen and brown ink with brown wash, heightened with white gouache, over black chalk on paper, 24 x 31 cm (9 7/16 x 12 3/16 in.)
The British Museum, London



Cat. No. 89
Jan Lievens (Dutch, 1607 - 1674)
Mercury Lulls Argus to Sleep with His Pipe, c. 1623-1625
pen and brown ink, heightened with white gouache on paper, 20 x 16.7 cm (7 7/8 x 6 9/16 in.)
Kupferstich-Kabinett, Staatliche Kunstsammlungen Dresden

Cat. No. 91 | File Name: 255-094.jpg
Jan Lievens (Dutch, 1607 - 1674)
Trumpeter on Horseback, c. 1625-1628
pen and brown ink with gray wash, over black chalk on paper, 28.1 x 22.5 cm (11 1/16 x 8 7/8 in.)
Rijksmuseum, Amsterdam



Cat. No. 92

Jan Lievens (Dutch, 1607 - 1674)

Christ Praying in the Garden of Gethsemane, c. 1625-1628

pen and brown ink with gray, black, and brown wash, the upper and lower right corners made up, on paper, 32.1 x 21.7 cm (12 5/8 x 8 9/16 in.)

Kupferstich-Kabinett, Staatliche Kunstsammlungen Dresden

Cat. No. 93

Jan Lievens (Dutch, 1607 - 1674)

The Feast of Esther, c. 1625-1628

pen and brush with brown and black ink over black chalk and touches of red chalk, heightened with gray and white gouache, a section of paper replaced by the artist, bottom center, on paper, 45 x 56.5 cm (17 11/16 x 22 1/4 in.)

Kupferstich-Kabinett, Staatliche Kunstsammlungen Dresden

Cat. No. 94

Jan Lievens (Dutch, 1607 - 1674)

Old Man Reading, late 1620s

red chalk, pen and black and brown ink, brush and gray and black ink washes on paper, 33.6 x 27.4 cm (13 1/4 x 10 13/16 in.)

Musée du Louvre, Département des Arts Graphiques, Paris

Cat. No. 96 | File Name: 255-180.jpg

Jan Lievens (Dutch, 1607 - 1674)

Old Woman in Half-Length Profile Facing Left, c. 1628-1630

pen and brown ink, with touches of gray wash, over traces of black chalk on paper, 14.7 x 13.2 cm (5 13/16 x 5 3/16 in.)

Maida and George Abrams Collection, Boston, Massachusetts, on loan to Fogg Art Museum, Harvard University



Cat. No. 97 | File Name: 255-172.jpg

Attributed to Jan Lievens (Dutch, 1607 - 1674)

Moorish Man with Turban in Half-Length, c. 1627-1629

red and black chalk on paper, 19.2 x 14.8 cm (7 9/16 x 5 13/16 in.)

Private collection, The Netherlands



Cat. No. 98

Jan Lievens

Bearded Old Man in Profile, c. 1628-1630

red chalk, with touches of black chalk on paper, 13.7 x 13.8 cm (5 3/8 x 5 7/16 in.)

National Gallery of Art, Washington, Gift of Mrs. Lessing J. Rosenwald

Cat. No. 99 | File Name: 255-125.jpg

Jan Lievens (Dutch, 1607 - 1674)

Bearded Man in Half-Length, Facing Left, c. 1630-1631

red and black chalk on paper, 17 x 13.5 cm (6 11/16 x 5 5/16 in.)

The British Museum, London



Cat. No. 100 | File Name: 255-126.jpg
Jan Lievens (Dutch, 1607 - 1674)
Hermit in Contemplation, Sitting on a Chair, c. 1630-1631
red chalk, indented for transfer, on paper, 19 x 14 cm (7 1/2 x 5 1/2 in.)
The British Museum, London



Cat. No. 102 | File Name: 255-102.jpg
Jan Lievens (Dutch, 1607 - 1674)
Portrait of Adriaen Brouwer, 1635-1637
black chalk, with touches of black ink, 22.1 x 18.5 cm (8 11/16 x 7 5/16 in.)
Frits Lugt Collection, Institut Néerlandais, Paris



Cat. No. 103 | File Name: 255-127.jpg
Jan Lievens (Dutch, 1607 - 1674)
Portrait of Constantijn Huygens, 1639
black chalk, with touches of pen and brown ink on paper, 23.8 x 17.4 cm (9 3/8 x 6 7/8 in.)
The British Museum, London



Cat. No. 104 | File Name: 255-177.jpg
Jan Lievens (Dutch, 1607 - 1674)
River God with an Eagle, c. 1638-1643
pen and brown ink over traces of black chalk on paper, 14.6 x 20 cm (5 3/4 x 7 7/8 in.)
National Gallery of Art, Washington, Ailsa Mellon Bruce Fund



Cat. No. 106
Jan Lievens (Dutch, 1607 - 1674)
A Painter's Studio, c. 1638-1643
pen and brown ink with brown wash, over black chalk on paper, 38.5 x 29.5 cm (15 3/16 x 11 5/8 in.)
Private collection

Cat. No. 107
Jan Lievens (Dutch, 1607 - 1674)
Scholar Sitting in His Studio, c. 1640-1643
black chalk, corrected with white, indented for transfer on paper, 25.5 x 19.2 cm (10 1/16 x 7 9/16 in.)
Museum Boijmans Van Beuningen, Rotterdam

Cat. No. 108
Jan Lievens (Dutch, 1607 - 1674)
Man with Mustache and Goatee, Asleep, c. 1640-1643
black chalk, with touches of brown wash, within double framing lines in brown ink on paper, 23.6 x 19.1 cm (9 5/16 x 7 1/2 in.)
Staatliche Museen zu Berlin, Kupferstichkabinett

Cat. No. 110 | File Name: 255-187.jpg

Jan Lievens (Dutch, 1607 - 1674)

Forest Landscape with a Pond, early 1640s

pen and brown ink over black chalk on paper, 21.8 x 35.5 cm (8 9/16 x 14 in.)

Maida and George Abrams Collection, Boston, Massachusetts, on loan and promised gift to Fogg Art Museum, Harvard University



Cat. No. 111 | File Name: 255-193.jpg

Jan Lievens (Dutch, 1607 - 1674)

The Rollerbridge to the Sloterpolder, near Amsterdam, middle to late 1640s(?)

reed pen and brown ink with brown and grayish-brown wash, on oriental paper, with sketches of trees on the verso, 13.6 x 23.2 cm (5 3/8 x 9 1/8 in.)

Private collection, Germany



Cat. No. 113 | File Name: 255-103.jpg

Jan Lievens (Dutch, 1607 - 1674)

Portrait of Caspar Streso, 1650s

black chalk, possibly oiled, and stumping, indented for transfer, within brown ink framing lines, 22.9 x 19 cm (9 x 7 1/2)

Frits Lugt Collection, Institut Néerlandais, Paris



Cat. No. 116 | File Name: 255-128.jpg

Jan Lievens (Dutch, 1607 - 1674)

Portrait of Admiral Maerten Harpertsz Tromp, c. 1652

black chalk on paper, 23.4 x 18 cm (9 3/16 x 7 1/16 in.)

The British Museum, London



Cat. No. 117

Jan Lievens (Dutch, 1607 - 1674)

Portrait of Andries de Graeff, 1657

black chalk, with traces of white heightening on paper, 42.1 x 31.3 cm (16 9/16 x 12 5/16 in.)

Teylers Museum, Haarlem

Cat. No. 118 | File Name: 255-153.jpg

Jan Lievens (Dutch, 1607 - 1674)

Portrait of Jan Vos, c. 1660

black chalk on paper, 32.6 x 25.5 cm (12 13/16 x 10 1/16 in.)

Städel Museum, Frankfurt am Main



Cat. No. 119

Jan Lievens (Dutch, 1607 - 1674)

Two Studies of a Man in a Hat, Late 1650s

pen and brown ink on paper, 19.1 x 17.5 cm (7 1/2 x 6 7/8 in.)

Staatliche Museen zu Berlin, Kupferstichkabinett

Cat. No. 121 | File Name: 255-185.jpg
Jan Lievens (Dutch, 1607 - 1674)
A Path in the Haagse Bos, c. 1654-1658
pen and brown ink on oriental paper, 22.9 x 38.1 cm (9 x 15 in.)
The J. Paul Getty Museum, Los Angeles



Cat. No. 123 | File Name: 255-183.jpg
Jan Lievens (Dutch, 1607 - 1674)
Ruins of the Castle of Brederode, c. 1645-1655
pen and brown ink and brown wash, within brown ink framing lines on paper, 29.2 x 38.3 cm (11 1/2 x 15 1/16 in.)
Peck Collection, Boston



Cat. No. 125 | File Name: 255-174.jpg
Jan Lievens (Dutch, 1607 - 1674)
Village Street with a Windmill, 1650s(?)
pen and brown ink, within dark brown ink framing lines on paper, 25.4 x 40.5 cm (10 x 15 15/16 in.)
The Pierpont Morgan Library, New York. Gift of J.P. Morgan, Jr., 1924



Cat. No. 126 | File Name: 255-130.jpg
Jan Lievens (Dutch, 1607 - 1674)
Homestead in a Forest, c. 1654-1658
pen and brown ink with brown wash on oriental paper, within brown ink framing lines, 22.2 x 37 cm (8 3/4 x 14 9/16 in.)
The British Museum, London



Cat. No. 129 | File Name: 255-095.jpg
Jan Lievens (Dutch, 1607 - 1674)
View of Cleves, c. 1655-1665
pen and brown ink with brown wash on paper; touches of pen and black ink and gray wash by a later hand, 24.9 x 39.5 cm (9 13/16 x 15 9/16 in.)
Rijksmuseum, Amsterdam



Cat. No. 130 | File Name: 255-181.jpg
Jan Lievens (Dutch, 1607 - 1674)
Distant View of Haarlem, c. 1655-1665(?)
pen and brown ink, with traces of brown wash and black chalk on paper, 23 x 35.5 cm (9 1/16 x 14 in.)
Maida and George Abrams Collection, Boston, Massachusetts, on loan to Fogg Art Museum, Harvard University



Cat. No. 131 | File Name: 255-175.jpg
Jan Lievens (Dutch, 1607 - 1674)
Landscape with Peasant Dwelling among Trees, c. 1655-1665(?)
pen and brown ink on oriental paper, 22.6 x 37.6 cm (8 7/8 x 14 13/16 in.)
The Pierpont Morgan Library, New York



Cat. No. 132 | File Name: 255-182.jpg

Jan Lievens (Dutch, 1607 - 1674)

Forest Interior with a Draftsman, 1660s(?)

pen and brown ink and brown wash on paper, 24 x 36.2 cm (9 7/16 x 14 1/4 in.)

Maida and George Abrams Collection, Boston, Massachusetts, on loan to Fogg Art Museum, Harvard University



Cat. No. 133

Jan Lievens (Dutch, 1607 - 1674)

Garden Entrance, c. 1655-1665

pen and brown ink on oriental paper, 22.2 x 37.1 cm (8 3/4 x 14 5/8 in.)

Amsterdams Historisch Museum, Bequest C. J. Fodor

Cat. No. 135 | File Name: 255-131.jpg

Jan Lievens (Dutch, 1607 - 1674)

Old Tree Trunk in Front of a Forest, c. 1655-1665

pen and brown ink on oriental paper, the outlines partially indented, 35 x 22.2 cm (13 3/4 x 8 3/4 in.)

The British Museum, London



Cat. No. 136 | File Name: 255-105.jpg

Jan Lievens (Dutch, 1607 - 1674)

Sandpit with Two Sheds, c. 1664

pen and brown ink and brown wash, within dark brown ink framing lines, 25.7 x 40.5 cm (10 1/8 x 15 15/16 in.)

Frits Lugt Collection, Institut Néerlandais, Paris



Cat. No. 137 | File Name: 255-132.jpg

Jan Lievens (Dutch, 1607 - 1674)

Sandpit with Two Sheds, Pigs in the Foreground, c. 1664

pen and brown ink with brown wash on paper, 25.1 x 41.2 cm (9 7/8 x 16 1/4 in.)

The British Museum, London



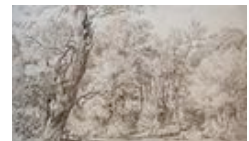
Cat. No. 138 | File Name: 255-176.jpg

Jan Lievens (Dutch, 1607 - 1674)

Dense Wooded Landscape with a Pond, 1660s

pen and brown ink, on oriental paper, 22.9 x 37.4 cm (9 x 14 3/4 in.)

Katrine Ames, New York



Cat. No. 139 | File Name: 255-178.jpg

Jan Lievens (Dutch, 1607 - 1674)

Dense Wooded Landscape with Deer, c. 1660s

pen and brown ink on paper, 27.6 x 40.5 cm (10 7/8 x 15 15/16 in.)

National Gallery of Art, Washington, Ailsa Mellon Bruce Fund

