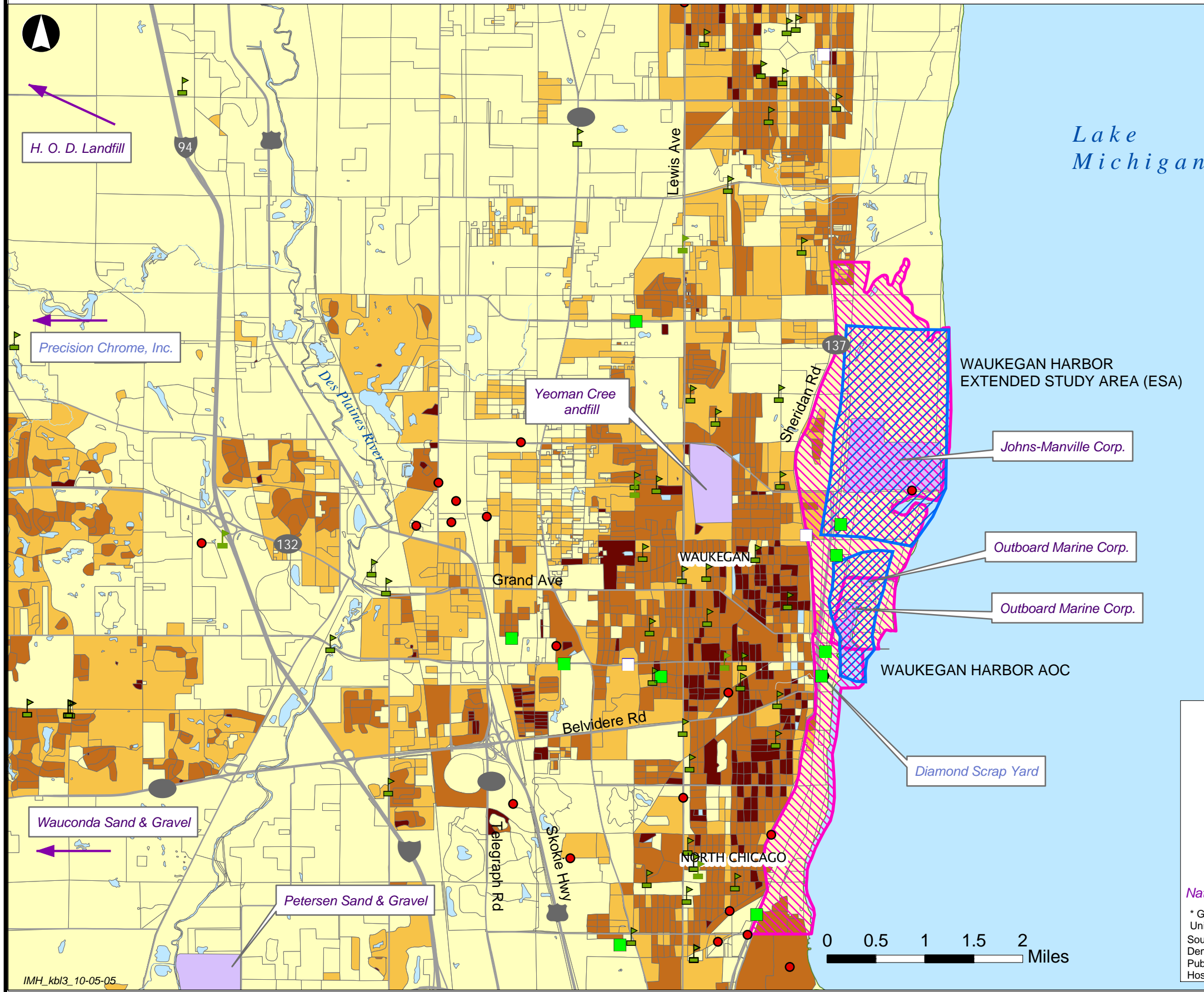
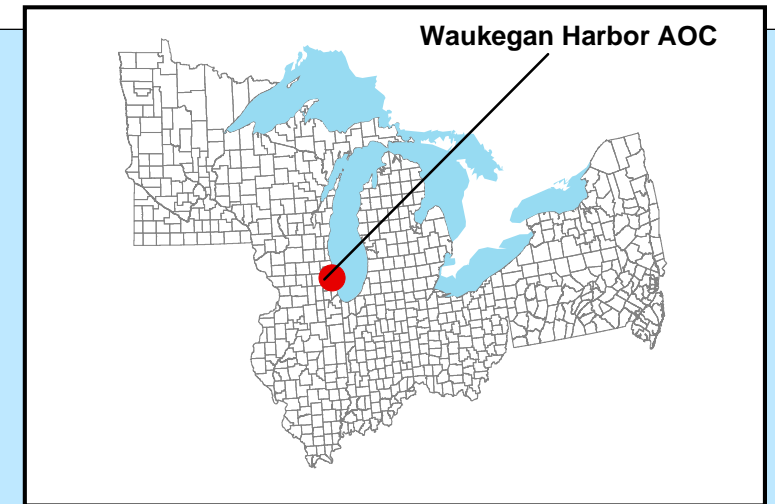


Waukegan Harbor Area of Concern Lake County, Illinois

Great Lakes Areas of Concern



Lake County, Illinois
Demographic Profile

| | |
|------------------------------|-------|
| Children 6 Years and Younger | 7527 |
| Females Aged 15 - 44 | 14079 |
| Adults 65 Years and Older | 54986 |

Demographic Profiles:
1 Mile Radius from NPL Site

| NPL Site | Children 6 Years and Younger | Females Aged 15 - 44 | Adults 65 Year and Older |
|------------------------|------------------------------|----------------------|--------------------------|
| H.O.D. Landfill | 611 | 1397 | 649 |
| Johns-Manville Corp. | 623 | 1220 | 74 |
| Outboard Marine Corp. | 2183 | 3754 | 110 |
| Petersen Sand & Gravel | 421 | 876 | 78 |
| Wauconda Sand & Gravel | 527 | 1097 | 453 |
| Yeoman Creek Landfill | 4745 | 8346 | 3219 |

Legend

- ▲ NPDES Pipeline Location
- NPL Site
- CERCLIS Site
- Boundary of AOC*
- Public Schools
- Hospitals
- Rivers
- Major Roads

2000 TRI Chemical Release Information (in pounds)

- 0 - 9,99
- 10,000 - 99,999
- 100,000 - 2,000,000

Population Density by Census Block (persons / sq. mile)

- 0 - 1500
- 1501 - 5000
- 5001 - 15000
- 15001 - 40000

○ Revised EPA Boundary of AOC (2007)

National Priority List (NPL) Sites Non-NPL Sites having 1, 2, or 3 Hazard Category Code

* Geographic definition of AOC based on description from the United States Environmental Protection Agency, (USPEA). Final version pending.
Sources: AOC, TRI data: United States Environmental Protection Agency;
Demographics: 2000 U.S. Census Bureau;
Public Schools: U.S. Department of Education, 1999 - 2000;
Hospitals: American Hospital Association, 2001.